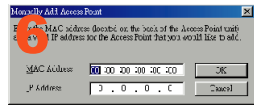
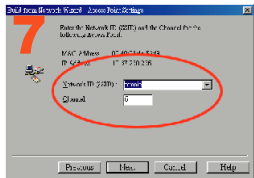


Access Point

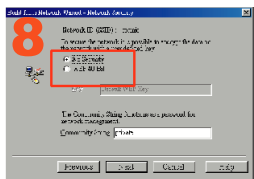
IEEE 802.11b



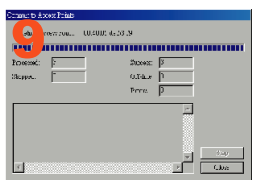
6. To add Access Point manually, you will need to input MAC address (which is available on the back of your Access Point) and key in an unused IP address of the Access Point. Press "OK" after completion then "Next".



7. Key in network ID of your preference. Then, input preferred radio channel if differ from default. If there is more than one Access Point, this step will repeat several times. Press "Next".



8. Please select "No Security" for Network ID and set preferred password for "Community String". This step will repeat if there are more than one WLAN. Select "Next".



9. Press "Finish", the wizard will prompt "Commit to Access Points" window. Select "Close". Your wireless network is now complete.

IEEE 802.11b Quick Start Guide to the Installation of Access Point






46.EJA03.003

IEEE 802.11b WLAN Access Point Quick Start Guide




1. Mount the Access Point firmly to the wall on the desired position.
2. Attach the Ethernet cable to Access Point.
3. Insert the power adaptor.



Is your Installation Successful ?

At the front of the Access Point you will see three pictures. If the installation is successful, the middle  is green and the highest  (WLAN) and lowest  (Wired Network) flash whenever there is traffic on the respective network.

How to Select Wired Network ?

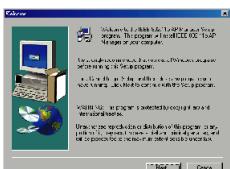
The Access Point automatically selects the medium attached. When the cable network is detected, the network  will turn yellow.

Factory Settings :

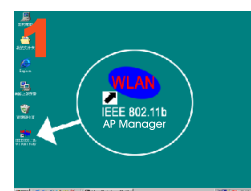
You can reset the Access Point's Settings to factory defaults by pushing a paperclip in the little hole next to the power switch when Access Point is turned off. Hold until the lights at the front of the Access Point   are off. When you push a paperclip in the reset hole while the Access Point is switched on, only the lock set by APManger is deactivated.

Installing APManger:

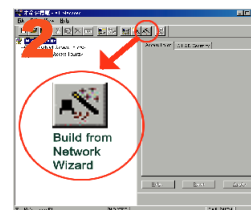
1. Insert CD containing APManger into your CD-ROM.
2. Follow through the installation wizard to complete software installation process.



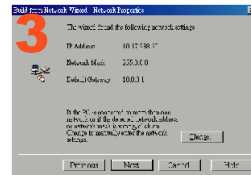
Setting up a Wireless Network Using APManger:



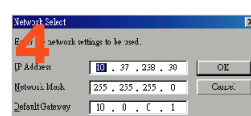
1. If APManger is not launched after software installation, it is available by clicking the short-cut icon on your desktop.



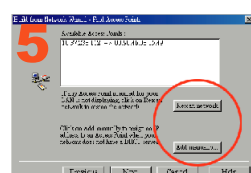
2. Select "Build from Network Wizard" icon from the tool bar on the main window.



3. Network settings for PC where APManger is installed will be automatically detected. Press 'Change' if PC is connected to more than one network and you would like to change; go to step 4. If not, please press 'Next' and go to step 5.



4. In the "Network Select" window, you will need to input an unused network IP address (Please also refer to your Network Neighborhood Property sheet). Furthermore, insert (255.255.255.0) for your Network Mask. Lastly the Default Gateway that you key in should be the same as the router address. Select "OK" when finished and press "Next"; go to Step 5.



5. Access Point is also automatically detected. If all access points are displayed, select "Next" and go to Step 7. If not, please select "Rescan" or click "Add manually" to input Access Points manually; go to Step 6.