

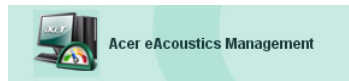
Acer eAcoustics Management

Acer eAcoustics Management offers you a useful tool to balance your computing power needs with your desired level of quietness. By reducing the processor speed for tasks that require less processing, the CPU and system fans can run slower, thus reducing the amount of sound generated by these components.

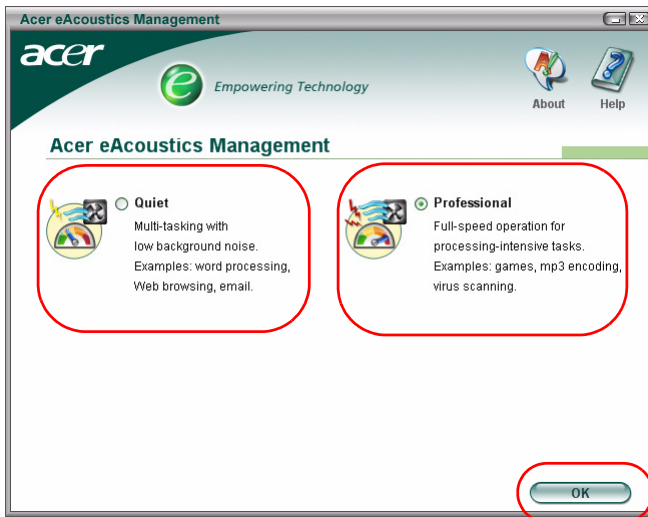
Using Acer eAcoustics Management

You can launch Acer eAcoustics Management in a number of ways:

- From the Start menu, go to **Start > (All) Programs > Empowering Technology > Acer eAcoustics Management**.
- By clicking on the **Empowering Technology** icon from your desktop, or pressing the < *e* > key to launch the **Empowering Technology** user interface. Select the **Acer eAcoustics Management** icon.



This will open the Acer eAcoustics Management main page.



Acer eAcoustics Management Main Page

Listed on the main page are two options for Acer eAcoustics Management, labeled as Quiet and Professional. Select the mode that suits your working requirements best, and click **OK** to apply the mode.

Quiet

Use this mode for tasks that require low processing power, like word processing, Web browsing, and instant messaging. This mode creates the lowest audio disturbance.

Professional Mode

Use this mode for processing-intensive tasks, when you require full-speed operation.