

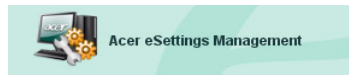
Acer eSettings Management

Acer eSettings Management allows you to view your system information and configuration, and monitor your desktop PC's overall system health.

Using Acer eSettings Management

You can launch Acer eSettings Management in a number of ways:

- From the Start menu, go to **Start > (All) Programs > Empowering Technology > Acer eSettings Management**.
- By clicking on the **Empowering Technology** icon from your desktop, or pressing the < *e* > key to launch the **Empowering Technology** user interface. Select the **Acer eSettings Management** icon.



This will open the Acer eSettings Management main page.



Acer eSettings Management Main Page

From the main page, you can choose to:

- Monitor the system health
 - Optimize memory usage
- View the system information

Monitoring

Select this option to monitor your system health.

The first window gives you a summarized overview of your system's current health. Click on any parameter to view its detailed information.

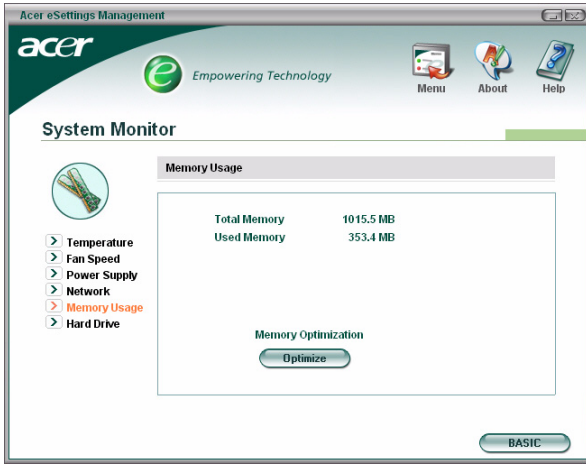


Click on **"Advanced"** to view detailed reports on the status of:

- Temperature
- Fan Speed
- Power Supply
- Memory Usage
- Hard Drive

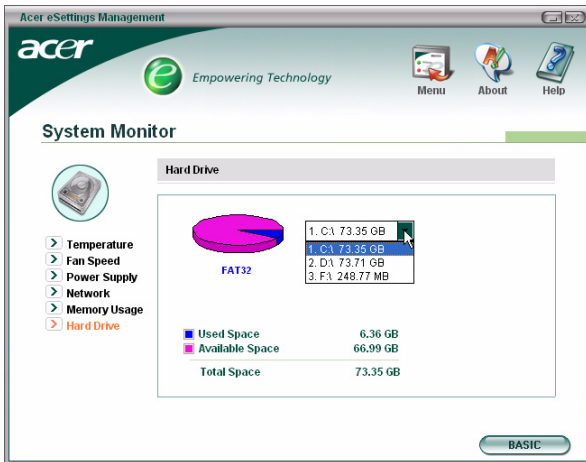
Memory optimization

In the Advanced view, you can select **Memory Usage** to view the current available system memory and the amount used. Click the **Optimize** button to optimize memory usage.



Hard drive

Selecting **Hard Drive** allows you to view the free space on your hard drives, and the file format system used. Select the hard drive that you want to view from the drop-down menu.



System Information

Select this option to view comprehensive system information.



Click the icons below the information area to view details for the (top to bottom):

- Summary
- Processor
- Memory
- Motherboard
- BIOS
- Video Card
- Sound Card