

Acer eNet Management

Acer eNet Management offers you a simple-to-use tool to manage your network connections. You can set up different profiles for connecting to a network from a variety of different locations, via wired or wireless connections.

Acer eNet Management detects which network environment you're in, and automatically switches to the appropriate profile. Since the profiles also store information such as the printer settings for each environment, Acer eNet Management will set the correct printer default for the selected profile, for example.

Using Acer eNet Management

To launch Acer eNet Management:

- Click the **Acer eNet Management** icon in the **Empowering Technology** toolbar shown on your desktop.
- From the **Start** menu, go to **(All) Programs > Acer Empowering Technology > Acer eNet Management**.



This will open the Acer eNet Management main page.



Acer eNet Management Main Page

The Acer eNet Management main page shows you the current connection status, as well as a list of available profiles.

Saving the current connection

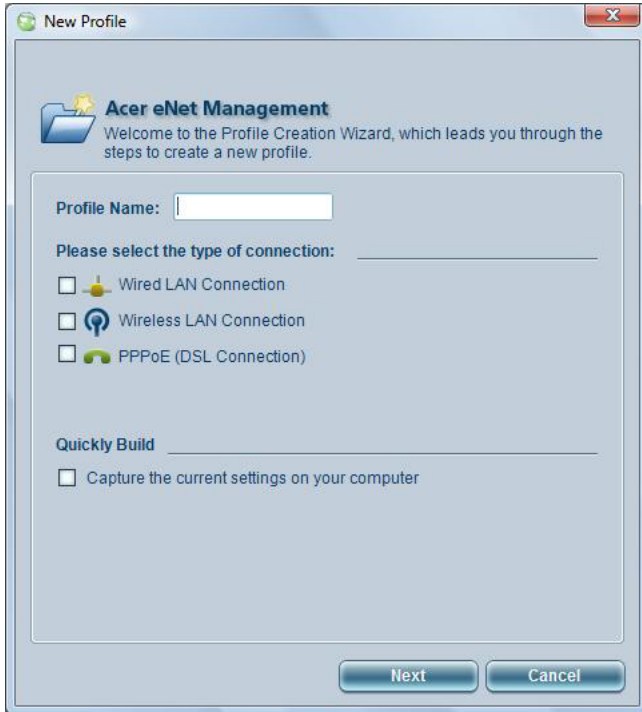
If you're connected to a network, and wish to save your settings to a profile, click the **Save** button above the connection status information.



Setting up a new profile

If you wish to manually set up a profile (for example, for a location you know you will visit in the future)...

Switch to the **Profile Manager** page and click **New** to open the **Profile Creation Wizard**. Follow the easy-to-understand onscreen instructions.



After entering the information for your new profile, click **OK** to return to the **Profile Manager** page. Here you can import, export, edit, rename or delete your profile.



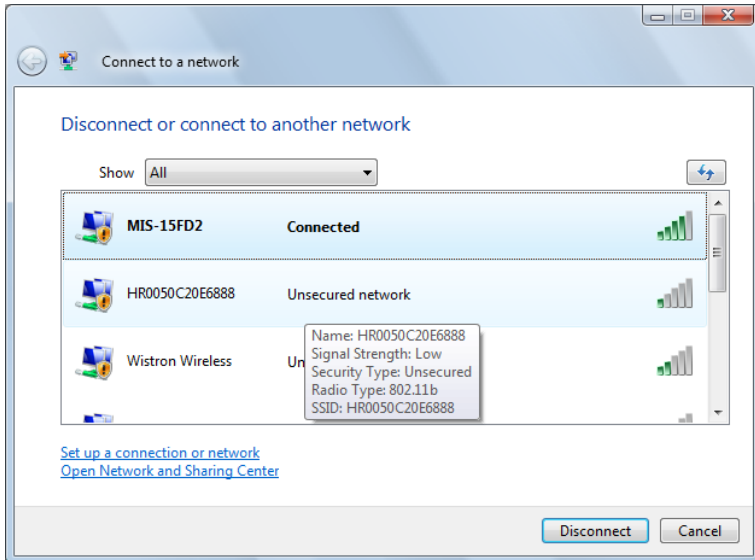
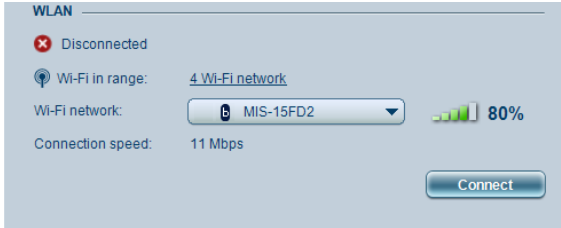
Manually activate a profile

To manually activate a profile, simply go to the **Main** page and select the desired profile from the profile list.



The Wireless Manager

From the eNet Management **Main** page, click the **number of Wi-Fi networks** detected, to the right of **Wi-Fi in range**, to open the **Wireless Manager**.



Changing the Settings

Switch to the **Settings** page to configure a variety of general and network settings. Here you can choose to run Acer eNet Management when Windows starts, switch networks automatically, change network card settings, and more.



Diagnosing a Network Connection

If an adapter is not connected or you are having network difficulties, you can run the **Network Advisor** by clicking its icon, which is located under the profile list on the **Main** page. Here you can also view **Network Information** and run the **Diagnostic Tools**.

