



Acer eSettings Management Main Page

From the main page, you can view different types of **System Information**:

- Summary
- Processor
- Memory
- MB and BIOS
- Video
- Audio
- Network

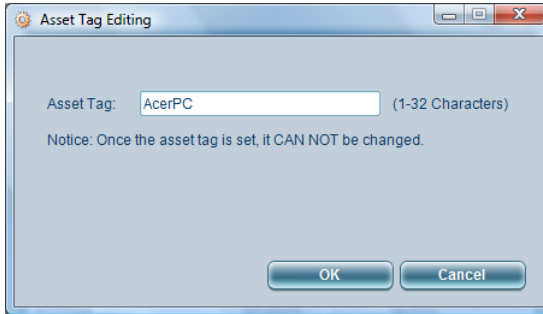
Click the  icon to save and the  icon to print information for the selected tab.

By clicking the icons at the bottom of the page, you can also:

- Set your **Boot Options**.
- Create and remove **BIOS Passwords**.

Adding an asset tag

Adding an asset tag allows you to set an asset tag for your system. This may be helpful for system administrators to keep track of multiple computers, for example. Once set, the asset tag will appear in the Summary view of Acer eSettings Management and also in the system's BIOS settings.



To set the asset tag, click **Add Asset Tag**. Enter the asset tag you want to use (1-32 characters) and then select **OK**.

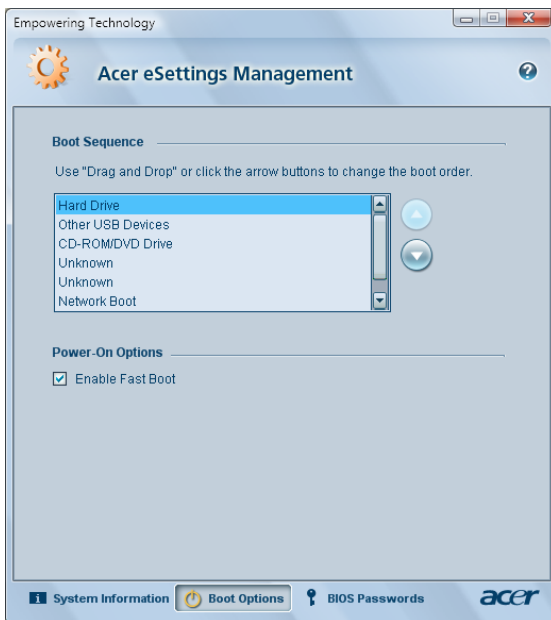


.....

Note: Once set, the asset tag cannot be changed. This feature is only available for certain systems.

Boot Options

Select this page to change your computer's boot sequence and power-on options.



Changing the boot sequence

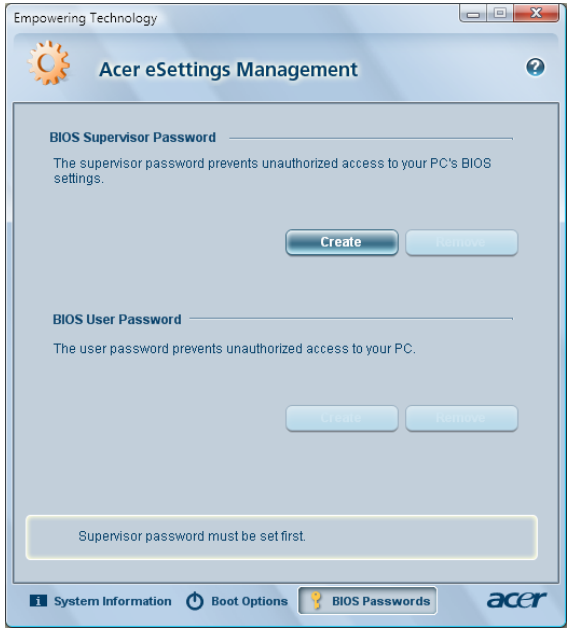
To change the boot order of your system, **drag and drop the devices** into the boot order desired, or **select a device and use the up and down arrows** to set the boot sequence.

Changing power-on options

Check or un-check **Enable Fast Boot** to enable or disable this feature.

BIOS Passwords

Use this page to set BIOS supervisor and user passwords. These passwords are used to control access to your system and its BIOS settings.



BIOS Supervisor and User Password

The BIOS Supervisor and User Passwords control access to different functions.

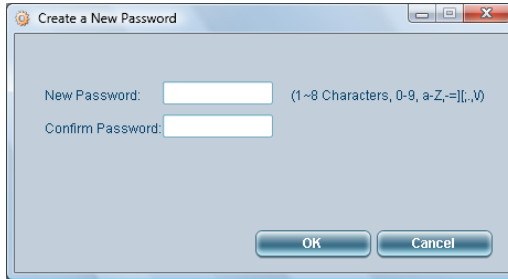
- The BIOS Supervisor Password limits access to the system's BIOS settings.
- The BIOS User Password limits completion of the system's boot-up process.



.....
Note: Because the BIOS User Password can be set or changed through the system's BIOS settings, the BIOS Supervisor Password is considered a "higher" level password.

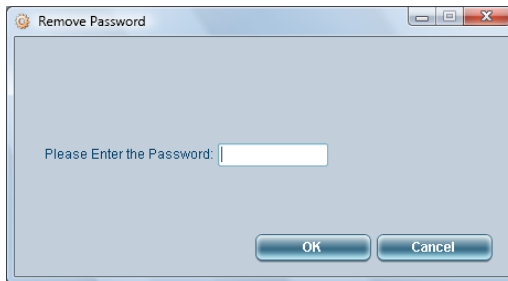
Setting the passwords

- To set a password, click **Create** and enter the password you want to use (1-8 characters from 0-9, a-Z, -=][:;.,\). Confirm the password and select **OK**.



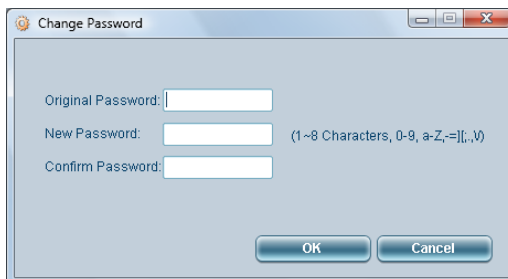
The dialog box titled "Create a New Password" contains two input fields. The first is labeled "New Password:" and has a placeholder text "(1-8 Characters, 0-9, a-Z, -=][:;.,\)". The second is labeled "Confirm Password:". At the bottom right, there are two buttons: "OK" and "Cancel".

- To remove a password, click **Remove**. Type the current password, and it will be removed.



The dialog box titled "Remove Password" contains a single input field labeled "Please Enter the Password:". At the bottom right, there are two buttons: "OK" and "Cancel".

- After a password is created, the **Create** button will become the **Change** button. To change an existing password, click **Change**. You will need to enter the existing password, the new password, and the confirmed new password.



The dialog box titled "Change Password" contains three input fields. The first is labeled "Original Password:". The second is labeled "New Password:" and has a placeholder text "(1-8 Characters, 0-9, a-Z, -=][:;.,\)". The third is labeled "Confirm Password:". At the bottom right, there are two buttons: "OK" and "Cancel".