

# Acer eConsole User's Guide

---

### Third Party Software or Free Software License Information

Software pre-loaded, embedded or otherwise distributed with the products provided by Acer does contain free or third party software programs ("Free Software"), which are licensed under the terms GNU General Public License (the "GPL"). The Free Software is marked as such. Your copying, distribution and/or modification of the Free Software shall be subject to the terms of the GPL.

The Free Software is distributed in the hope that it will be useful, but **WITHOUT ANY WARRANTY**; without even the implied warranty of MERCHANTABILITY or FITNESS FOR A PARTICULAR PURPOSE. The provisions of the GNU General Public License shall always apply. You may access <http://www.gnu.org> directly to obtain a copy of the GPL or write to the Free Software Foundation, Inc. for asking a copy of which. The Address of the Free Software Foundation, Inc is: 59 Temple Place - Suite 330, Boston, MA, 02111-1307, USA.

For a period of three (3) years as commencing from your receipt of this software, you may obtain a complete machine-readable copy of the source code for the Free Software under the terms of the GPL without charge except for the cost of media, shipping, and handling, upon written request to us.

In addition, you might also link to this website to download it:  
<http://www.acer.com>

Contact us if you have any further questions. Our mailing address is: Acer Inc., 8F, 88, Sec. 1, Hsin Tai Wu Rd., Hsichih, Taipei Hsien 221, Taiwan, R.O.C.

# Contents

---

<b>Configuring the system software .....</b>	<b>4</b>
Installing Acer eConsole software.....	4
Using eConsole Software.....	8
Using eConsole software .....	9
<b>eConsole modes .....</b>	<b>9</b>
Managing media servers.....	10
Managing music files.....	11
Sharing music .....	11
Creating a new music folder.....	12
Viewing music folders .....	13
Editing music information .....	13
Synchronous Folders .....	14
Creating playlists and favorites .....	15
Deleting folders, files, playlists, and favorites .....	16
Managing picture files .....	17
Sharing pictures .....	17
Creating a new picture folder .....	18
Viewing picture folders.....	18
Editing picture information.....	19
Favorites .....	20
Managing video files .....	21
<b>Sharing video .....</b>	<b>21</b>
Creating a new video folder .....	22
Viewing video folders .....	22
Creating and editing favorites .....	24
Copying an audio CD .....	25
Searching for Media .....	26
Settings menu .....	27
Account manager .....	27
Device manager .....	28
Advanced Settings .....	29

## Configuring the system software

---

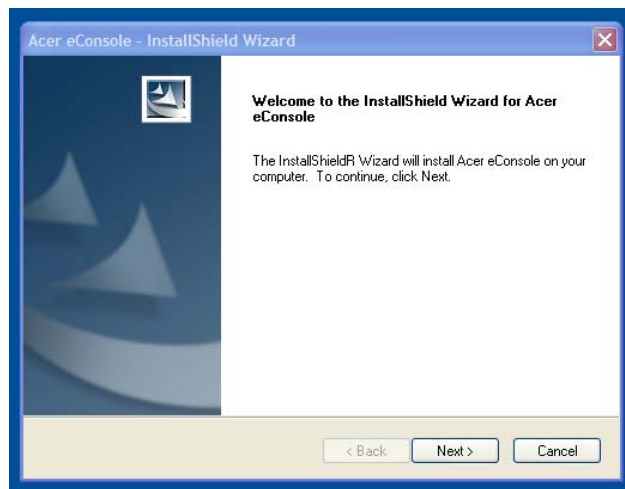
This section contains instructions on how to configure your home computer so that it can communicate with your Acer eConsole.

The first step is to install Acer eConsole software.

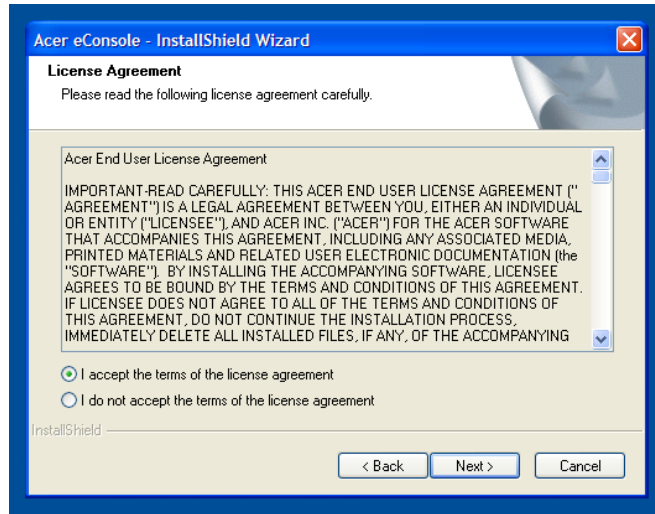
### Installing Acer eConsole software

To install Acer eConsole software first insert the software disk into your PC's optical drive tray. If your system is set to auto start the InstallShield Wizard screen will appear.

Select **NEXT>** to bring up the software license agreement screen.

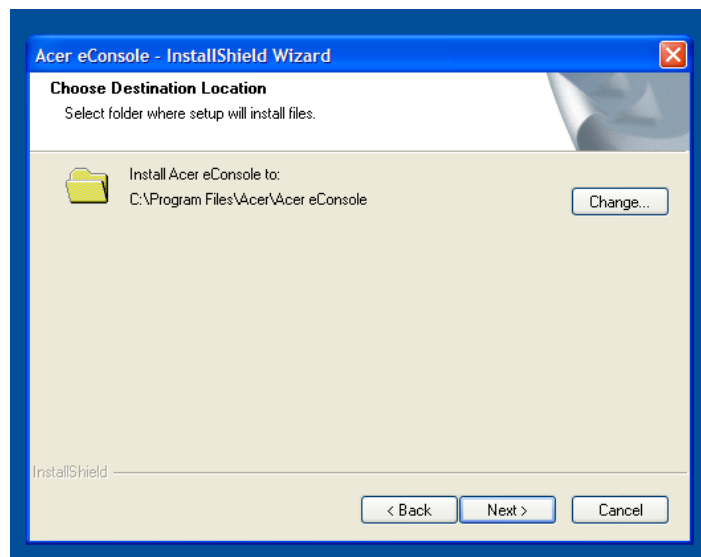


Read the agreement carefully and click on 'I accept the terms.' Then click **Next>** to advance to the file destination screen.



Select where you would like to install the eConsole files and then click **Next>**. The install wizard will then begin installing the eConsole software.

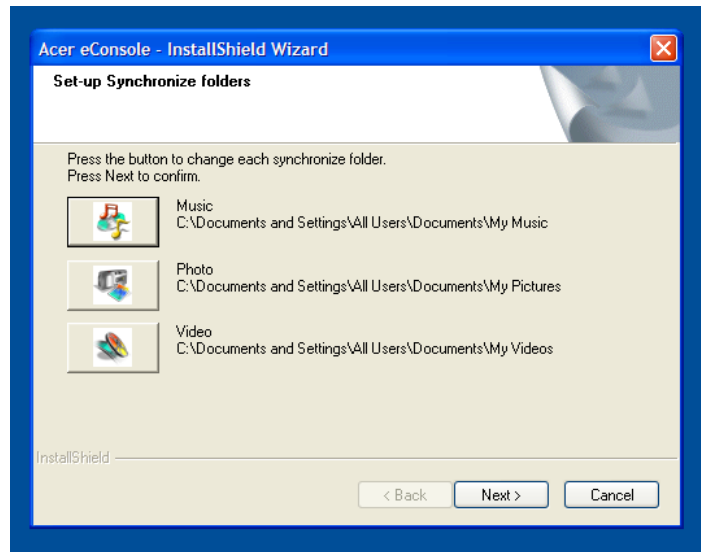
Once finished, the Set-up Synchronize folders' window will appear.



By default, the eConsole software will select the Windows designated media files (My Music, My Pictures, and My Videos) to share with the eConsole.

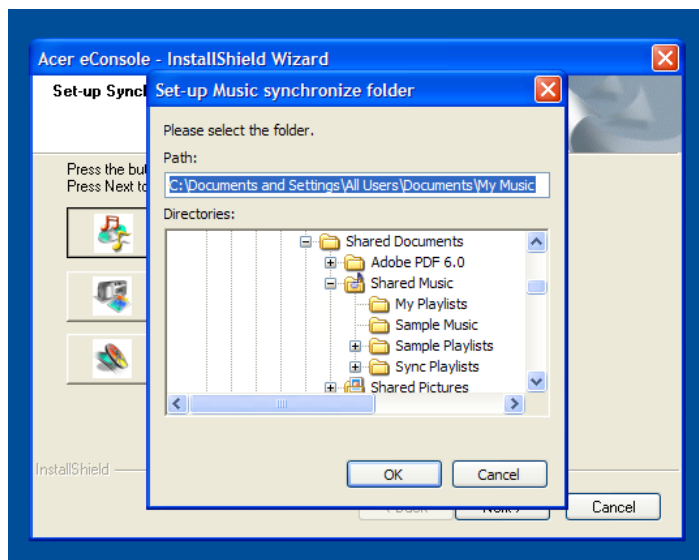
If the default folders are correct, click **Next>** to continue with the installation process.

## Issue Report Form

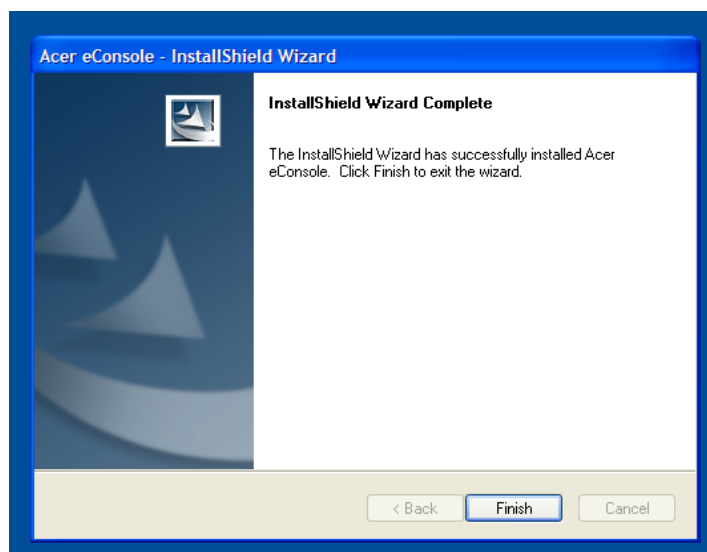


If you want to change the default settings and share different files, click on the corresponding icon and browse to select the folder you want to share. Click **OK** to continue.

Once you have selected the folders that you want to share, click **Next>**.



When the installation process is finished the completion screen will appear. Click **Finish** to close the installation software.



## Using eConsole Software

eConsole is an easy to use software program that comes bundled with your Acer eConsole.

eConsole allows you to conveniently organize your music, image, and video files for use with your eConsole entertainment console for playback on your television or audio system using the eConsole.

To enable your Acer eConsole to detect your media files you need to use eConsole software to organize and manage your user accounts. You can use eConsole to create favorite folders, playlists, and edit files for playback on your TV or audio system via your AcereConsole.

**Important:** eConsole must be installed on your computer before you begin to use the Acer eConsole.



## Using eConsole software

Once you have installed the eConsole software you can open it by right clicking on the system tray icon and selecting **Open eConsole**. Alternatively you can open eConsole by selecting **Start, All Programs, Acer, and Acer eConsole** from the Windows Start menu.

### eConsole modes

Once you have opened eConsole, roll your mouse pointer over each icon to reveal the three media management modes, **Manage music files**, **Manage picture files**, and **Manage video files**. You can select your desired mode by clicking on one of the icons.

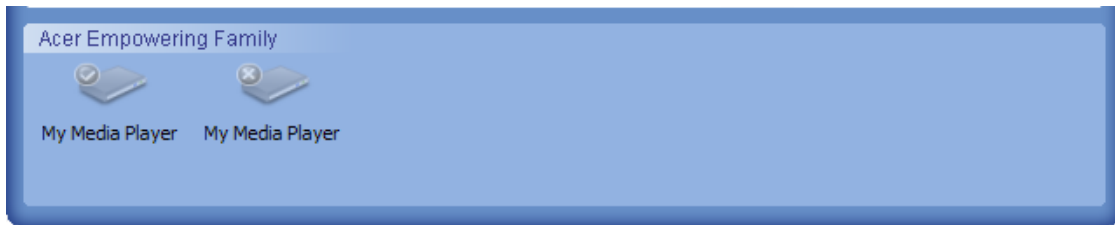


Once you have entered one of the modes you can easily switch to another by clicking on the tabs conveniently located at the top of the panel.



## Managing media servers

The start screen can also be used to enable and disable media servers quickly and easily. Located at the bottom of the start-up screen are graphical representations of all your detected media servers.



You can enable and disable a media server by right clicking the image and choosing **Enable** or **Disable**, depending on its current status.

# Managing music files

You can use your eConsole's music mode to perform many functions with your music library such as building playlists, compiling favorites, and ripping CDs.

## Sharing music

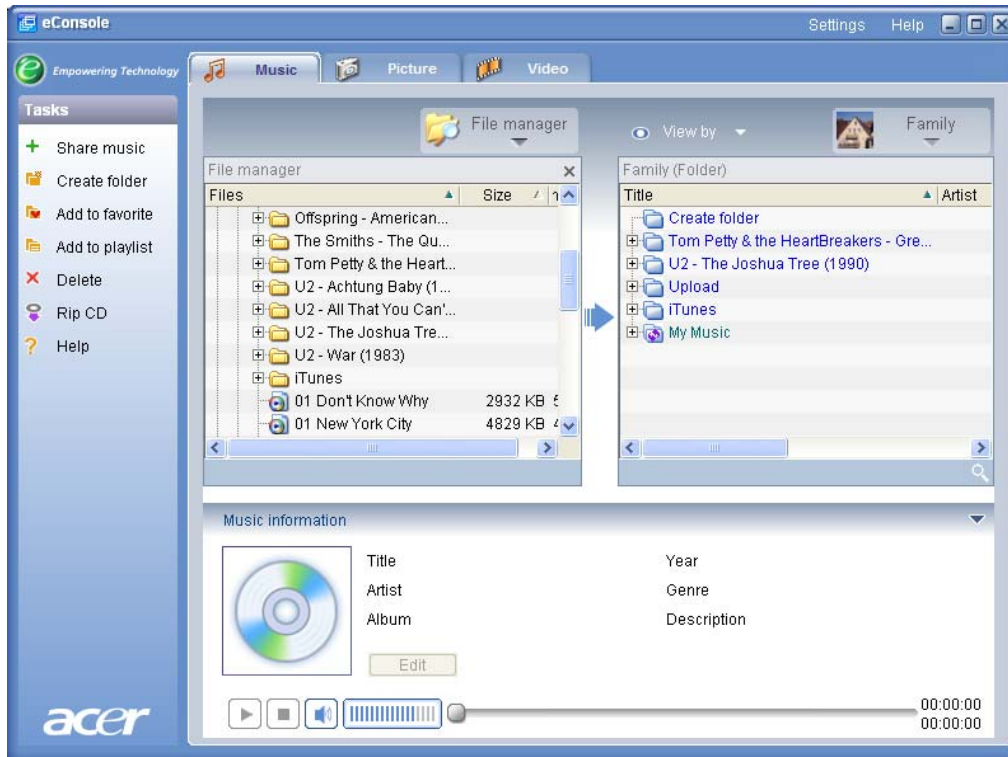
Sharing folders on eConsole enables you to access them with the Acer eConsole via your television.

With the eConsole, each family member or user can share different folders or files. This means that each user can choose to view only their preferred music and keep content separate from other users.

To share folders, click on the **Share music** icon at the top left-hand corner of the eConsole onscreen menu. This brings up the file manager screen (pictured below.)

Browse your files by clicking on the icons to select the folder that you want to share.

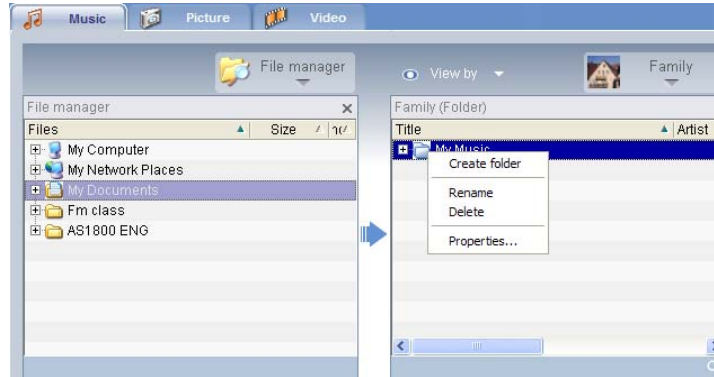
To share a folder, click on the icon and while holding down the mouse button drag the folder across and drop it into the right hand field.



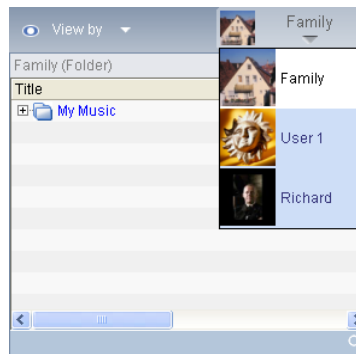
Each folder you share will be visible whenever you access the music menu with the eConsole. Once shared, the folder content can then be used to create playlists, favorites, and to burn CDs using the eConsole software.

To rename a shared folder right click in the right-hand field and select **Rename**.

If you wish to unshare a folder at any time right click the folder in the right-hand field and select **Delete**.



To edit or view a different family member or user's shared folders click on the drop down menu in the upper right-hand corner of the on-screen menu and select which user's files you would like to access.



## Creating a new music folder

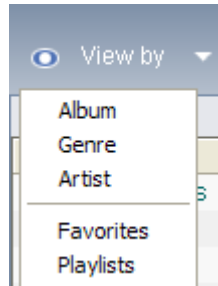
The eConsole lets you create new folders for storing music files.

To create a new folder in the shared music field click on **Create folder** on the left-hand side of the eConsole onscreen menu. This will add a folder entitled 'New Folder' in the shared music field.

You can rename and then copy songs into this folder and they will be available for editing and use with eConsole software and your eConsole player.

## Viewing music folders

You can change the way in which your media files are viewed by clicking on **View by** at the top of the file field. The drop down menu gives you a choice of viewing options: Album, Genre, Artist, Favorites and Playlists.



This provides a convenient way to view your files for different purposes.

## Editing music information

Each song in your music library has information that eConsole uses to categorize and store the file.

When you highlight a particular song the information available for that song will appear in the **Music information** window at the bottom of the onscreen menu.



To edit the song information, click the **Edit** field. Enter or change the information as you require and then click **Apply** to update.

To enlarge the file viewing area the information area can be hidden. To do this, click on the arrow icon in the top right hand of the information area. Click the arrow again to bring the information back.

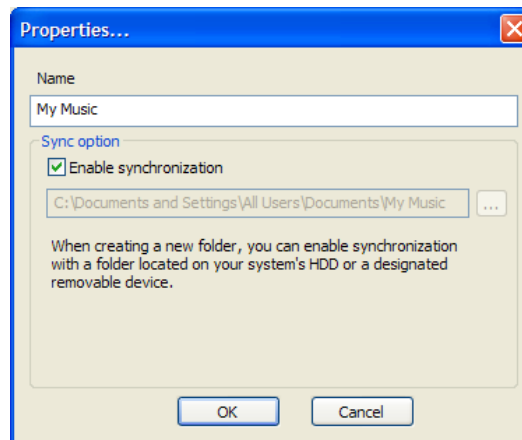
You can also add an album cover or picture for each song by double clicking the picture box and selecting a picture from your files.

## Synchronous Folders

A synchronous folder is a folder that is updated by the computer automatically to include any new files or media. The files are synchronized with a folder or removable device of your choice.

By default eConsole will choose My Music as your only synchronous folder, new and existing folders can also be converted to synchronous folders. Synchronous folders are indicated by two arrows inside the folder icon.

To create a synchronous folder, right click an existing folder and select **Properties**. This will bring up the properties menu.



Select the folder and then choose a folder that you wish to synchronize with by clicking on the box next to the address bar. Once you have chosen your folder, click the check box to enable synchronization and then click **OK** to confirm.

To disable synchronization, just uncheck the box and click **OK**.

Each synchronous folder is automatically updated to include any new files by the system tray application. The blue and yellow arrows will swap colors during any synchronization operations.



**Note:** To delete folders from a synchronous file you must delete the folder directly from your PC's directory.

# Creating playlists and favorites

Playlists and favorites are a convenient way to organize your songs into categories and make particular songs easier to find as your digital music library grows.

For example, you could create a playlist to suit the weather or reflect your mood, such as a rainy day playlist, or add your new CD to your favorites for faster access.

Playlists and favorites are created using the eConsole software suite on your PC. Once created, they can be accessed and played on your TV or audio system using your eConsole console and the remote unit.

## Creating and editing a playlist

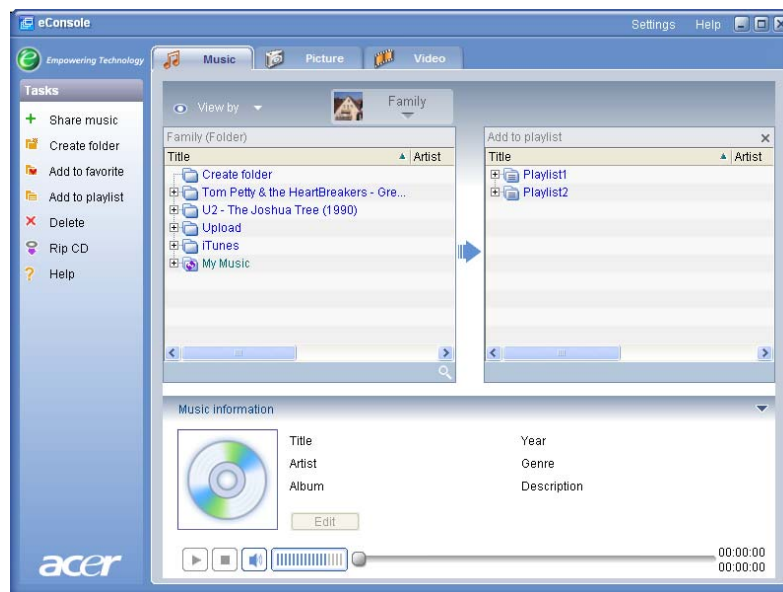
To create a playlist, click on the **Add to playlist** icon at the top left-hand corner of the eConsole onscreen menu. This brings up the playlist management screen.

You can then browse through your shared files by clicking on the icons to select the folder or song that you want to add to the playlist.

To add the folder or song to a playlist you need to click on the icon and while holding down the mouse button drag the folder across and drop it into the right hand field.

eConsole will then ask you if you want to create a playlist, and that this action will create a playlist folder containing the selected item; click **YES** to confirm.

The folder or file you have dropped into the right-hand box will now be converted into a playlist. This is represented by a list icon.



To add more songs or folders to a playlist, repeat the drag and drop action.

When dropping the files into the right-hand field, dropping them on top of an existing playlist icon will add them to that playlist. Dropping the file anywhere else

will create a new playlist. eConsole will ask you to confirm this action before continuing.

To delete or rename a song or playlist, right click the item and select your desired action.

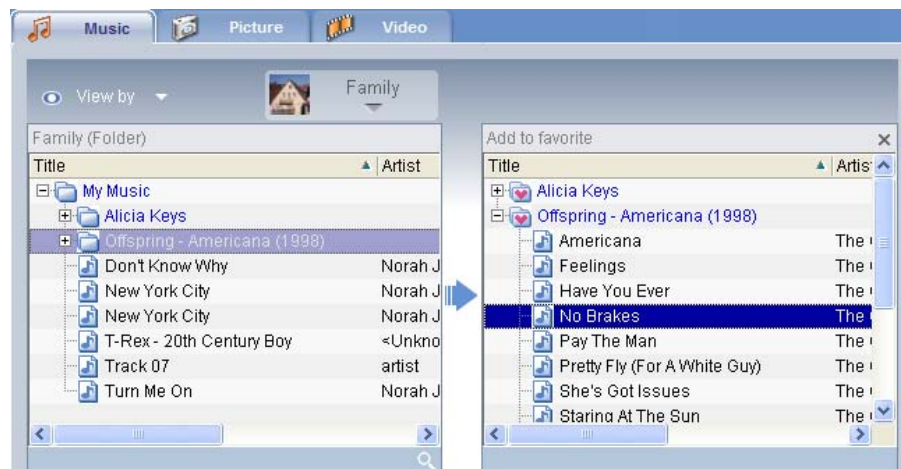
## Creating and editing favorites

To add to or create a favorites folder, click on the **Add to favorite** icon at the top left-hand corner of the eConsole onscreen menu. This brings up the favorites management screen.

You can then browse through your shared files by clicking on the icons to select the folder or song that you want to add.

To add a song or album to your favorites, click on the icon and while holding down the mouse button drag the folder across and drop it into the right hand field.

This will create a new folder in the right-hand field. The folder or album will be indicated with a heart icon and a single song will show a musical note.



Your favorites can now be easily accessed and played on your TV using the eConsole player.

To delete or rename a favorite, right click on the file and select your desired action.

## Deleting folders, files, playlists, and favorites

To delete a folder, file, playlist, favorite or radio station just highlight the item and click **Delete** on the left-hand side of the onscreen menu. eConsole will ask you for confirmation; click **Yes** to delete.



# Managing picture files

You can use your eConsole's picture mode to organize all your digital pictures into a library, and create favorite folders for viewing on your television using your Acer eConsole.

## Sharing pictures

Sharing folders with eConsole enables you to access them using the Acer eConsole via your television.

With the eConsole, each family member or user can share different folders or files. This means that each user can choose to view only their preferred pictures and keep content separate from each other.

To share folders, click on the **Share Picture** icon at the top left-hand corner of the eConsole onscreen menu. This brings up the file manager screen.

You can then browse your files by clicking on the icons to select the folder that you want to share. To share the folder, you need to click on the folder icon, drag the folder across, and drop it into the right hand field.



Each folder you share will be visible whenever you access the picture menu with the eConsole. Once shared, the folder content can then be used to create favorites and organize into slideshows using the eConsole software.

If you wish to unshare a folder at any time right click the folder in the right-hand field and select **Delete**.

To rename a shared folder right click in the right-hand field and select **Rename**.

To edit a different family member or user's shared folders click on the drop down menu in the upper right-hand corner of the on-screen menu and select which user's files you would like to access.

## Creating a new picture folder

eConsole lets you create new folders for storing picture files.

To create a new folder in the shared picture field, click on **Create folder** on the left-hand side of the eConsole onscreen menu.

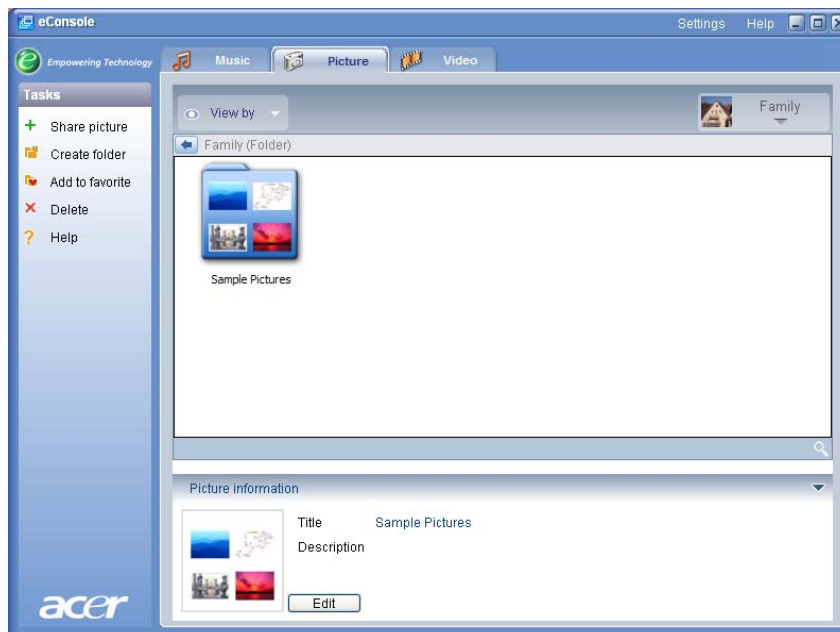
This will add a new folder in the shared picture field.

You can then copy images into this folder and they will be available for editing and use with eConsole software and your eConsole player.

## Viewing picture folders

You can change the way in which your picture files are viewed by clicking on **View by** at the top of the file field. The drop down menu gives you a choice of viewing options: Thumbnail or Folder.

Thumbnail view



## Editing picture information

Each image in your picture library has information that eConsole uses to categorize and store the file.

When you highlight a particular image the information available for that picture will appear in the **Picture information** window at the bottom of the onscreen menu.



To edit the information, click the **Edit** field. Enter or change the information as you require and then click **Apply** to update.

## Favorites

Favorites are a convenient way to organize your images and make particular pictures easier to find as your digital photograph library grows.

Favorites are created using the eConsole software suite on your PC. Once created, they can be accessed and viewed on your TV using your eConsole console and the remote control.

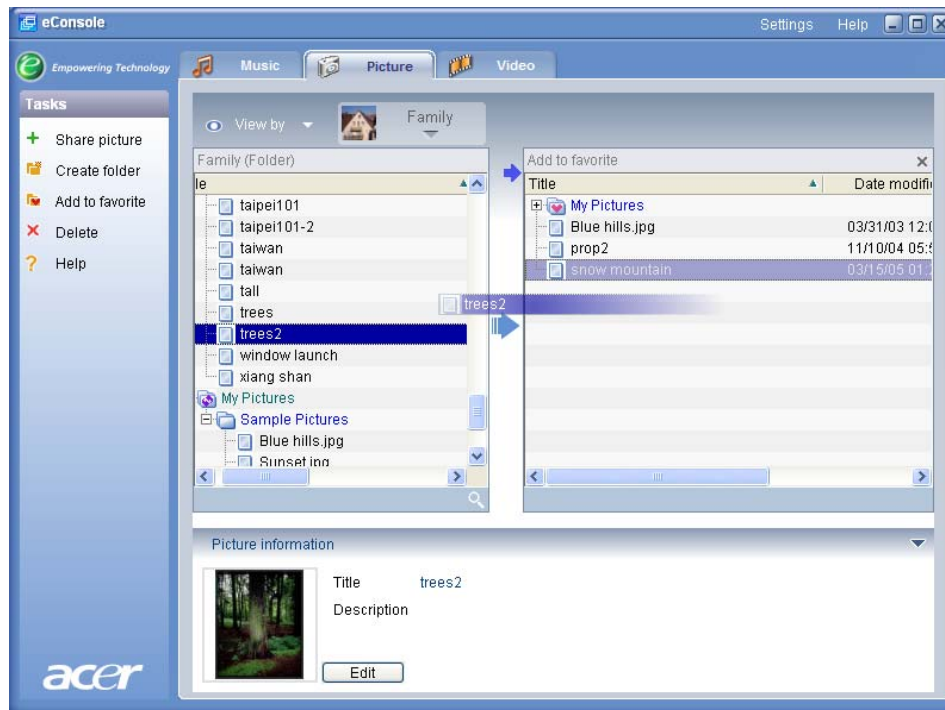
## Creating and editing favorites

To create favorites, click on the **Add to favorite** icon at the top left-hand corner of the eConsole onscreen menu. This brings up the favorite management screen.

You can then browse through your shared files by clicking on the icons to select the folder or image that you want to add to the favorite folder. To add the folder to a favorite list you need to click on the icon and while holding down the mouse button drag the folder across and drop it into the right hand field.

You can add more photographs to the favorites folder by repeating the drag and drop action.

A folder will be indicated with a heart icon and an image will show a photograph icon.



To delete or rename an image or folder from your favorites folder right click the item and select your desired action.

Your favorite pictures can now be easily accessed and viewed as a slideshow on your TV using the eConsole player.

# Managing video files

You can use the eConsole's video mode to organize all your compatible digital film into a library, to create favorite film clip folders, or for viewing your video clips on your television using the eConsole.

## Sharing video

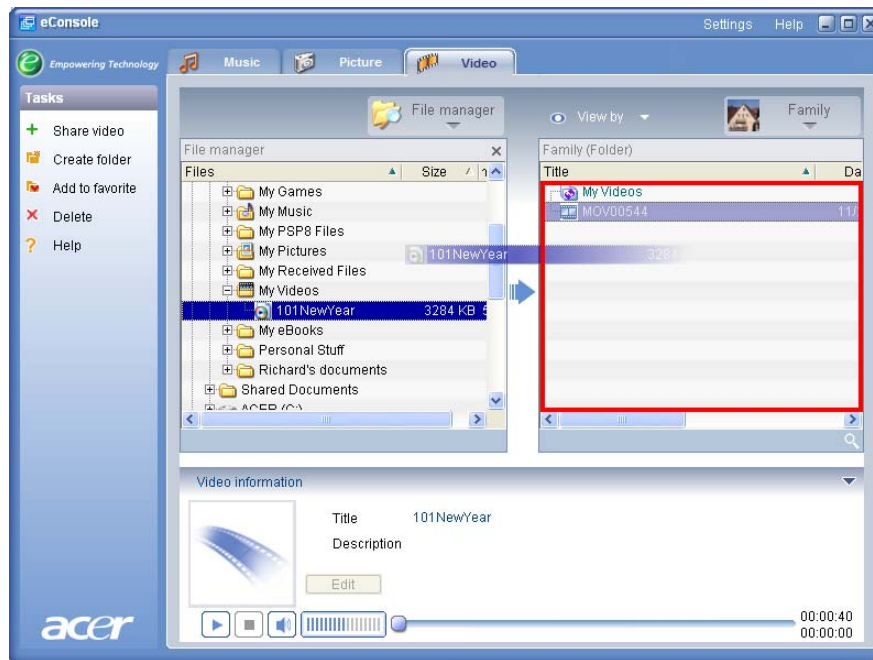
Sharing folders and video clips with eConsole enables you to access them using the Acer eConsole for viewing via your television.

With the eConsole each family member or user can share different video folders or files. This means that each user can choose to view only their preferred film clips and keep content separate from other users.

To share folders, click on the **Share video** icon at the top left-hand corner of the eConsole onscreen menu. This brings up the video file manager screen.

You can then browse through your files by clicking on the icons to select the folder or video clip that you want to share.

To share the folder you need to click on the folder icon, drag the folder across and drop it into the right hand field.



Each folder you share will be visible whenever you access the video menu with the eConsole. Once shared, the folder content can then be viewed using the eConsole software.

If you wish to unshare a folder at any time, right click the folder in the right-hand field and select **Delete**.

To rename a shared folder, right click the folder in the right-hand field and select **Rename**.

To edit a different family member or user's shared folders, click on the drop down menu in the upper right-hand corner of the on-screen menu and select which user's files you would like to access.

## Creating a new video folder

eConsole lets you create new folders for storing video files.

To create a new folder in the shared video field, click on **Create folder** on the left-hand side of the eConsole onscreen menu.

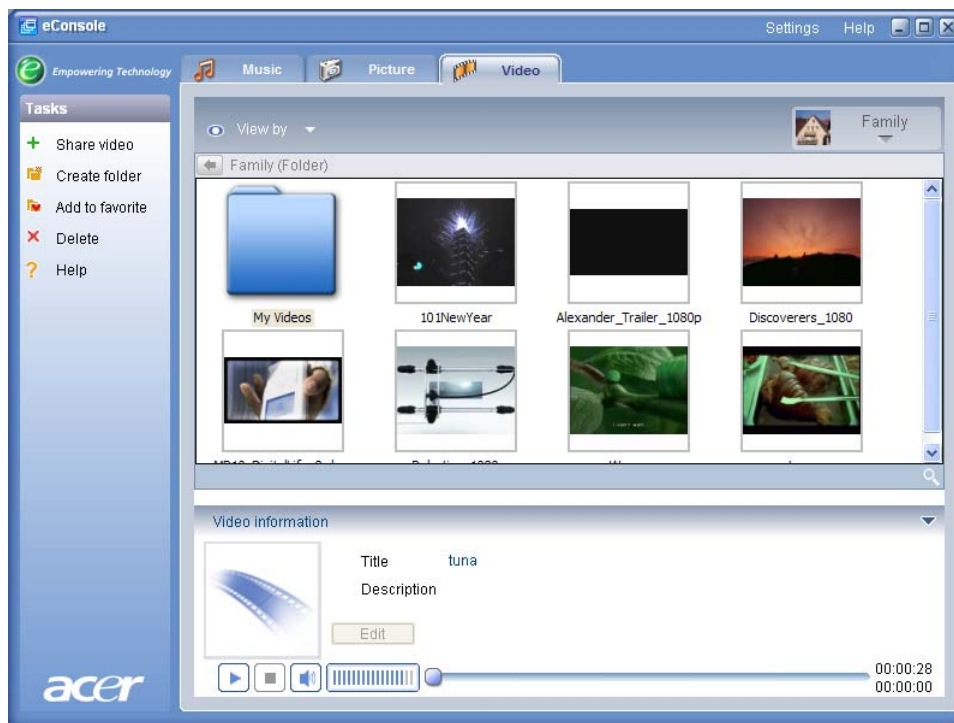
This will add a new folder in the shared video field.

You can then copy videos into this folder and they will be available for viewing with eConsole software and your eConsole player.

## Viewing video folders

You can change the way in which your video files are viewed by clicking on **View By** at the top of the file field. The drop down menu gives you a choice of viewing options: Thumbnail or Folder.

Thumbnail view



## Editing video clip information

Each clip in your video library has information that eConsole uses to categorize and store the file.

When you highlight a particular clip the information available for that video will appear in the **Video information** window at the bottom of the onscreen menu.



To edit the information, click the **Edit** field. Enter or change the information as you require and then click **Apply** to update.

## Favorites

Favorites are a convenient way to organize your video clips and make particular clips easier to find as your digital video library grows.

Favorites are created using the eConsole software suite on your PC. Once created, they can be accessed and viewed on your TV using your eConsole console and the remote control.

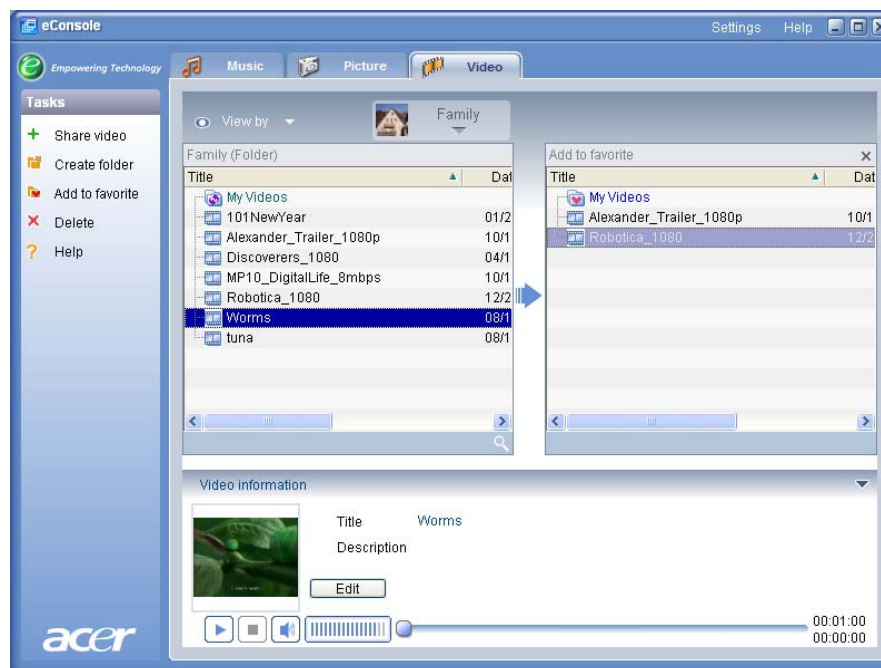
## Creating and editing favorites

To create favorites, click on the **Add to favorite** icon at the top left-hand corner of the eConsole onscreen menu. This brings up the favorite management screen.

You can then browse through your shared files by clicking on the icons to select the folder or clip that you want to add to the favorite folder. To add the folder to a favorite list you need to click on the icon, drag the folder across and drop it into the right hand field.

You can add more video clips to the favorites folder by repeating the drag and drop action.

A heart icon indicates a folder and a film icon represents a single clip.



To delete or rename an image or folder from your favorites list folder, right click the item and select your desired action.

Your favorite video clips can now be easily accessed and viewed on your TV using the eConsole player.



# Copying an audio CD

eConsole allows users to rip music files from a CD and store them in the hard drive either as MP3 or WMA files. To copy a CD, select Rip CD from the left hand menu.

The content of the CD will be displayed in the left hand window. Select the songs that you want to copy by checking them. Click **Start** when finished.

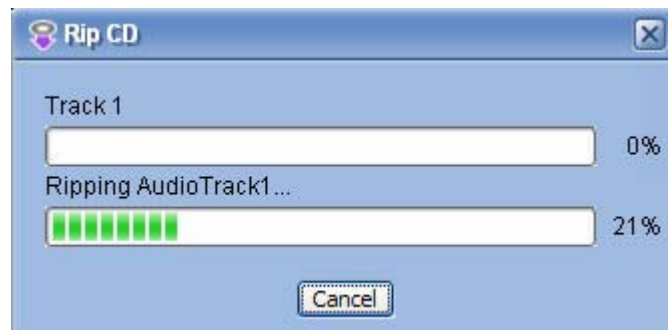
eConsole will ask you to confirm or choose another destination folder. Click **OK** to begin copying the songs.



eConsole will ask you to confirm or choose another destination folder.

To change the quality settings for copied files you need to access the Advanced Settings menu. Details of this are outlined in the [Settings menu](#) section.

Click **Start** to begin the copying process, a progress screen will appear. Click **Cancel** to stop the process at any time.



## Searching for Media

To search for a particular media file, whether a song, picture, or video clip, click on the search (magnifying glass) icon located at the bottom right hand of the file window.

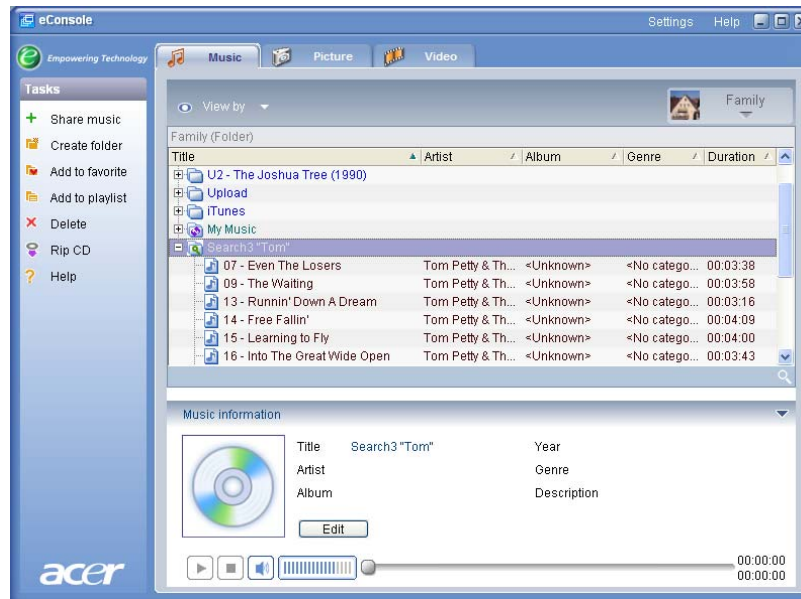
The search window will appear.



Input the name or details of the file you are searching for in the search string space. You can then click the check boxes to narrow the areas where eConsole will search. Click **OK** to begin the search.

Each media mode gives you different search criteria, for example, in music mode you can select to search, albums, genres, or artists.

The search results will appear in the database view, as shown below.



**Note:** The search function only works for the current media type and user. E.g.: You cannot search for video in music mode.

## Settings menu

The Settings menu allows you to modify and manage user accounts and media servers used with the eConsole.

To access the settings menu, right click **Settings** at the top right-hand corner of the onscreen menu. A drop down box will appear with three options: **Account Manager**, **Device Manager**, and **Advanced Settings**.

Select the option you require.

## Account manager

The Acer eConsole allows each family member or user to create a personal account. Each user can then store their personal music, video, and pictures in this account.

This feature makes it easy for a family to organize their files and keep all their media in separate user accounts.

To create or edit an account you need to open the Account Manager screen. Click on **Settings** at the top of the eConsole onscreen menu and select **Account manager** from the drop down menu.

The Account Manager screen appears.



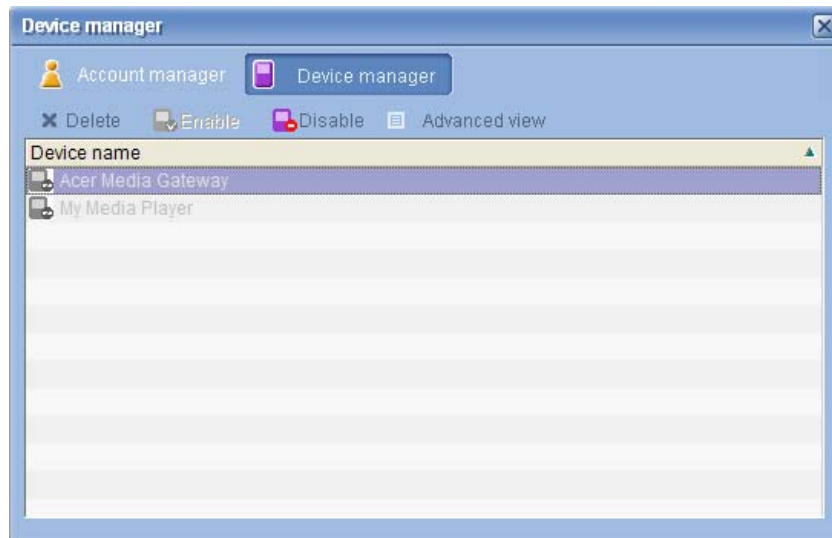
Using this screen you can create new accounts and add a new personalized image for each member account.

To create a new account just click on **+ Add**; the new account will appear on the left hand side of the screen. Click on the new account picture and type the name in the Member's Name field. You can then choose a picture from the Member's Pictures selection. Alternatively you can select a more personalized picture by clicking the **Browse** icon. This will enable you to choose a picture from any of your computer's image files.

To delete an unwanted user account click on the account to highlight it and then click **X Delete** at the top of the field.

## Device manager

The Settings menu also lets you enter the **Device manager** page. This page allows you to enable and disable media servers, check advanced settings, and also delete unwanted servers.



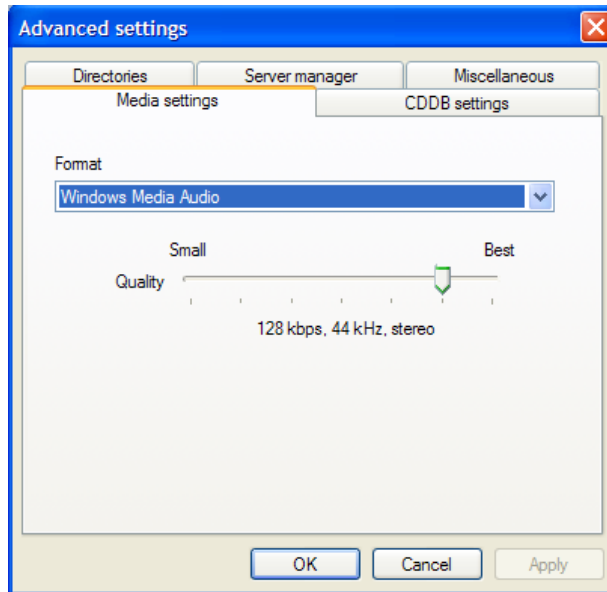
To enable or disable a server, highlight the server name and select **Enable** or **Disable**, depending on the server's current status.

To check the advanced settings, highlight the server and click **Advanced view**, this will display all the server's current settings and information.

To delete a server, highlight it and click on **Delete**.

# Advanced Settings

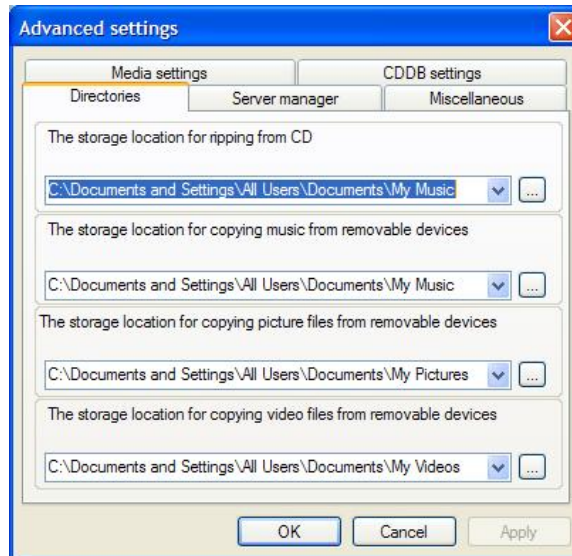
Choosing the Advanced Settings will bring up the Advanced Settings Menu. This menu will let you adjust many of the advanced functions for the eConsole.



Click on the corresponding tab to bring up the function you want to modify.

## Directories

Click on Directories and you can set the location for storing files when you rip songs from a CD, or copy pictures, music, and video from removable USB 2.0 storage devices.



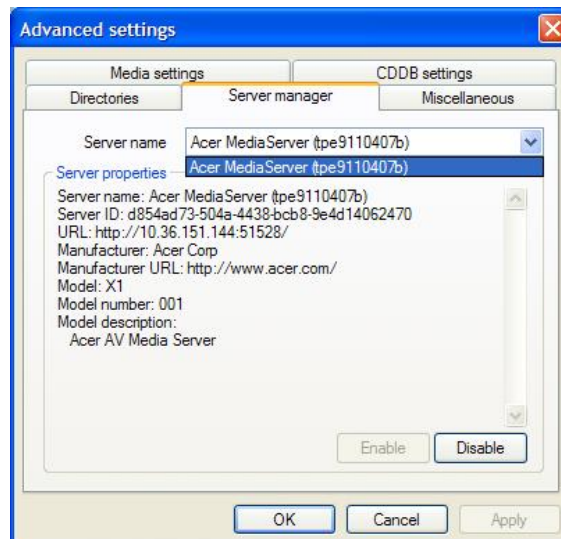
To change the location, click on the box located next to the address and select a different destination folder.

Click **Apply** to confirm and **OK** to exit.

## Server manager

Click on Server manager and you can check the properties of the media servers on your network.

To select a server, click on the arrow and select one from the drop down menu. You can then check the details of the server.



You can also **Disable** or **Enable** the media server using this menu by clicking on the corresponding button, depending on the current status. Click **Apply** to save your settings and **OK** to exit.

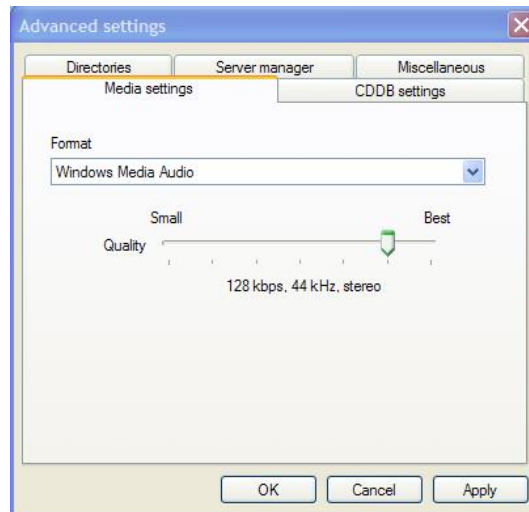
### Miscellaneous

Click on Miscellaneous and you can choose whether to enable the Acer launcher upon start up of your system.

Click the check box, followed by **Apply** to save your settings. Click **OK** to exit.

### Media settings

Click on Media settings to adjust the quality of the music files created by eConsole whenever you copy files from a CD.



Select the type of file you want to modify from the drop down box and then use the sliding scale to select the bit rate quality required.

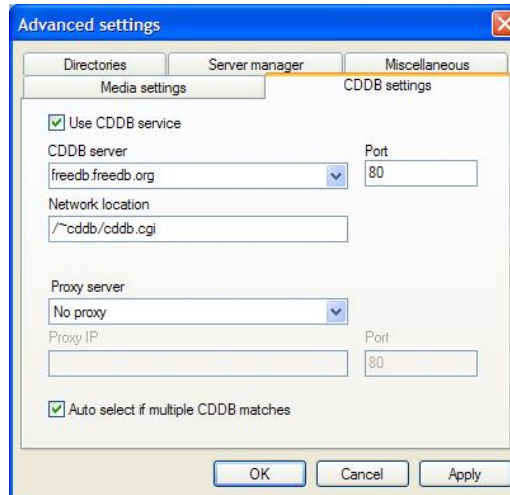
Click on **Apply** to save your changes and **OK** to exit.

**Important:** Remember that better quality files take up more storage space on your hard disk.

## CDDB Settings

Click on CDDB Settings to change the details of the Internet service that is used to obtain information about music files.

The service is used by eConsole to automatically find information and album covers for the music files that you save in your library.



Using this menu you can turn the service on and off, change the server, and change the advanced functions of the server.

**Note:** Acer recommends that you do not alter these settings.

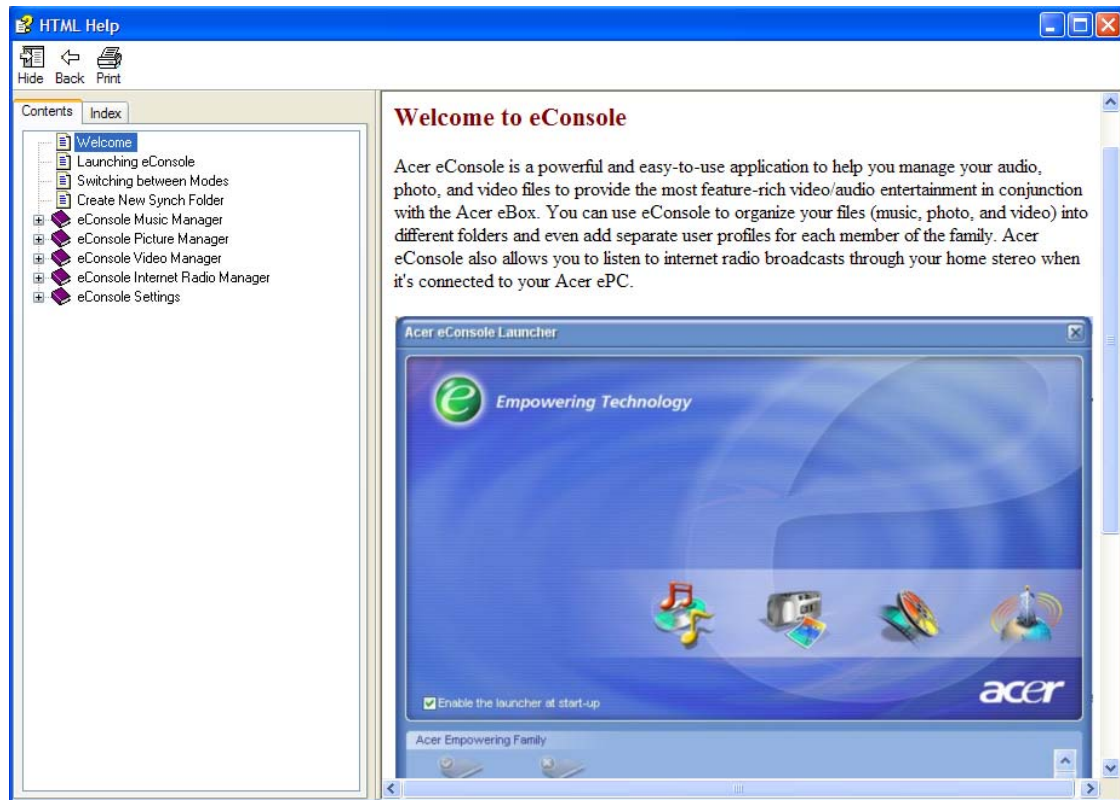


## Getting help

Help can be accessed should you experience any problems while using eConsole software.

Click on one of the help buttons located at the top right-hand corner or at the bottom of the left-hand Task menu.

This will bring up the on-screen help menu.



The Help menu provides information and instructions on using eConsole. Just click on a topic in the left hand contents section to bring up the information.

If after referring to the Help section your query has not been resolved then please contact your local Acer dealer for further assistance.

Information can also be found on the Acer website: <http://global.acer.com>