

UL International Services Ltd. - Taiwan Branch**香港商優力安全測驗有限公司台灣分公司**

1st Fl., 260 Da-Yeh Rd., Peitou	112 台北市北投區
Taipei City, Taiwan 112	大業路 280 號 1 樓
Phone: 02-2896-7790	電話 : 02-2896-7790
Fax: 02-2891-7644	傳真 : 02-2891-7644
e-mail: ul.tw@tw.ul.com	電子郵件 : ul.tw@tw.ul.com

**NOTICE OF AUTHORIZATION TO APPLY THE UL MARK****TAIWAN OFFICE - July 9, 2002**

TO : Proview Electronics Co., Ltd.
6th Fl 1 Pau Sheng Rd Yung-Ho
Taipei Hsien Taiwan 234

Attention: Mr. W. H. Chen

Our Reference: File E134827 Project 02NK93712, 02NK93711

Product: 1. CRT Monitor, Model 786N, 986N, 572N, and AF7XX Employing the Alternate Power Supply Cord.
2. LCD Monitor, Model 5XX Employing the Alternate Enclosure Material, Power Adapter, Inverter.
3. LCD Monitor, Model 7XX Employing the Alternate Enclosure Material, Power Adapter, Inverter.

Gentlemen:

This letter is sent on behalf of Underwriters Laboratories Inc. pursuant to the Corporate Services Agreement between UL International Services Ltd. - Taiwan Branch and UL.

UL's Investigation of your products has been completed under the above project number and the subject products were determined to comply with the applicable requirements.

This letter temporarily supplements the UL Follow-Up Services Procedure and serves as authorization to apply the UL and C-UL Listing Marks only at the factory under UL's Follow-Up Services Program to the subject products which are constructed as described below:

1. Similar to CRT Monitor, Model 786N, 986N, 572N, and AF7XX covered in the UL Follow-Up Services Procedure, File E134827, Volume 1, Section 42, except for employing the alternate power supply cord, see temporary procedure attached (Total 2 pages)
2. Similar to LCD Monitor, Model 5XX covered in the UL Follow-Up Services Procedure, File E134827, Volume 1, Section 43, except for employing the alternate components, see temporary procedure attached (Total 7 pages).
3. Similar to LCD Monitor, Model 7XX covered in the UL Follow-Up Services Procedure, File E134827, Volume 1, Section 44, except for employing the alternate components, see temporary procedure attached (Total 5 pages).

To provide the manufacturer with the intended authorization to use the UL Marks, the addressee must send a copy of this Notice and all attached material to each manufacturing location as currently authorized in File E134827, Volume 1.

This authorization is effective for 90 days only from the date of this Notice and only for products at the indicated manufacturing locations. Records in the Follow-Up Services Procedure covering the products are now being prepared and will be sent to the indicated manufacturing locations in the near future. Please note that Follow-Up Services Procedures are sent to the manufacturers only unless the Applicant specifically requests this document.

Products that bear the UL Mark shall be identical to those that were evaluated by UL and found to comply with UL's requirements. If changes in construction are discovered, appropriate action will be taken for products not in conformance with UL's requirements and continued use of the UL Mark may be withdrawn.

Very truly yours,

Jay Hsu (Ext. 62236)
Engineer
Conformity Assessment Services, 3000ATPI

Reviewed by:

Frank Liu (Ext. 62170)
Project Engineer
Conformity Assessment Services, 3000ATPI



An affiliate of
Underwriters Laboratories Inc.®

An independent,
not-for-profit organization
testing for public safety

File E134627

Vol. 1
and Report

Sec. 43

Page 1

Issued: 10-31-01
Revised: 07-19-02

DESCRIPTION

PRODUCT COVERED:

UL/CUL LCD Monitor, Models 5XX where X may be any alphanumeric character or blank.

ELECTRICAL RATING:

Model	Input	
	Voltage	Current
5XX	12 V ac	4.0 A
	*12 V dc	0 A

ENGINEERING CONSIDERATIONS (NOT FOR FIELD REPRESENTATIVE'S USE):

Special Considerations - The following items are considerations that were used when evaluating this product.

USL/CNL indicates investigation to the U.S. and Canadian (Bi-National) Standard for Safety of Information Technology Equipment, Including Electrical Business Equipment, CAN/CSA C22.2 No. 950 * US 1950, Third Edition, including Revisions through revision date January 31, 2001, which are based on the Fourth Amendment to IEC 60950 Second Edition.

The equipment was submitted and tested for a maximum manufacturer's recommended ambient (Tmra) of 40° C.

The equipment is considered movable, Class III (supplied by SELV).

Limited Current Circuits: The following accessible locations are part of a limited current circuits:

Location
Secondary side of inverter

ALTRNATE ENCLOSURE FOR LCD MONITOR MODEL 5XX - FIG. 3

General - Fig. 3 illustrates the overall view of alternate Enclosure for Model 5XX. The general design, shape and arrangement shall be as illustrated except where variations are specifically described.

Enclosure - Two pieces construction, molded of (QMF22), as shown in Fig. 3, rated min. overall measured 403 by 300 by 55 mm, 1.5 mm thick minimum.

Ventilation Openings - Provided with numerous openings on the rear, each opening measured 2.65 mm, location as shown in Fig. 3.

Base - Material same as enclosure, the figure of conical, overall 240 by 145 by 185 mm high, secured to enclosure by screws. Provided with weight, riveted onto base, to meet the stability requirement.

ALTRNATE ENCLOSURE FOR LCD MONITOR MODEL 5XX - FIG. 5 and FIG. 6

General - Fig. 5 & 6 illustrate the overall view of alternate Enclosure for Model 5XX. The general design, shape and arrangement shall be as illustrated except where variations are specifically described.

Enclosure - Two pieces construction, molded of (QMF22), as shown in Fig. 5 & 6, rated minimum HB for front enclosure and aluminium alloyed for rear enclosure, overall measured 352 by 288 by 29.4 mm, 1 mm thick minimum.

Base - Material same as rear enclosure, the figure of conical, overall 201 by 150 by 220 mm high, secured to enclosure by clip to a metal plate overall 92.4 by 90.2 by 7.2 mm which screws to enclosure. The base provided with weight 0.49 kg, to meet the stability requirement.

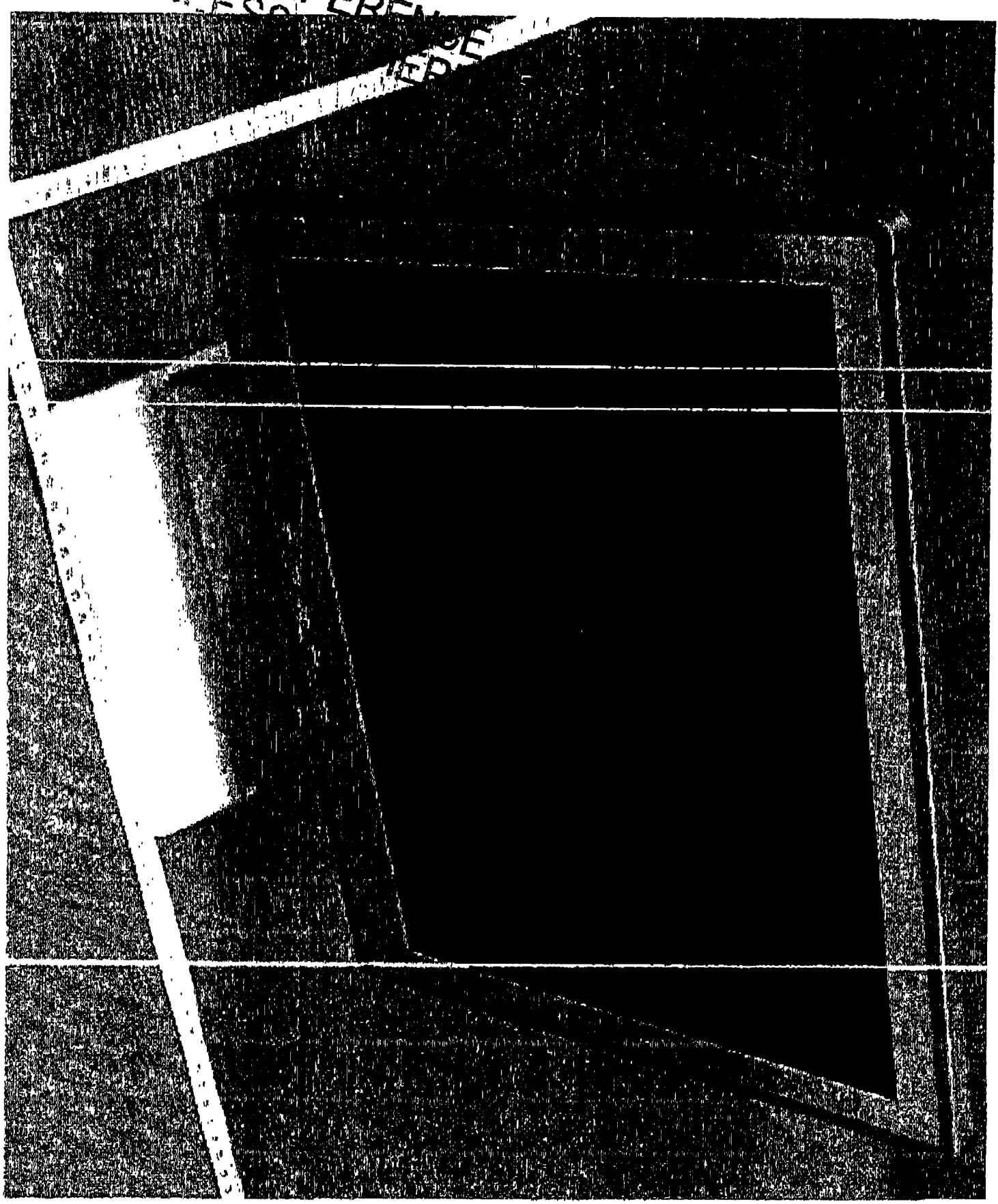
Speaker enclosure - Two pieces construction, molded of (QMF22), as shown in Fig. 5 & 6, aluminium alloyed for rear enclosure, overall measured 42.8 by 27.7 by 201.0 mm, 1 mm thick minimum. Secured by clip to bottom of the unit.

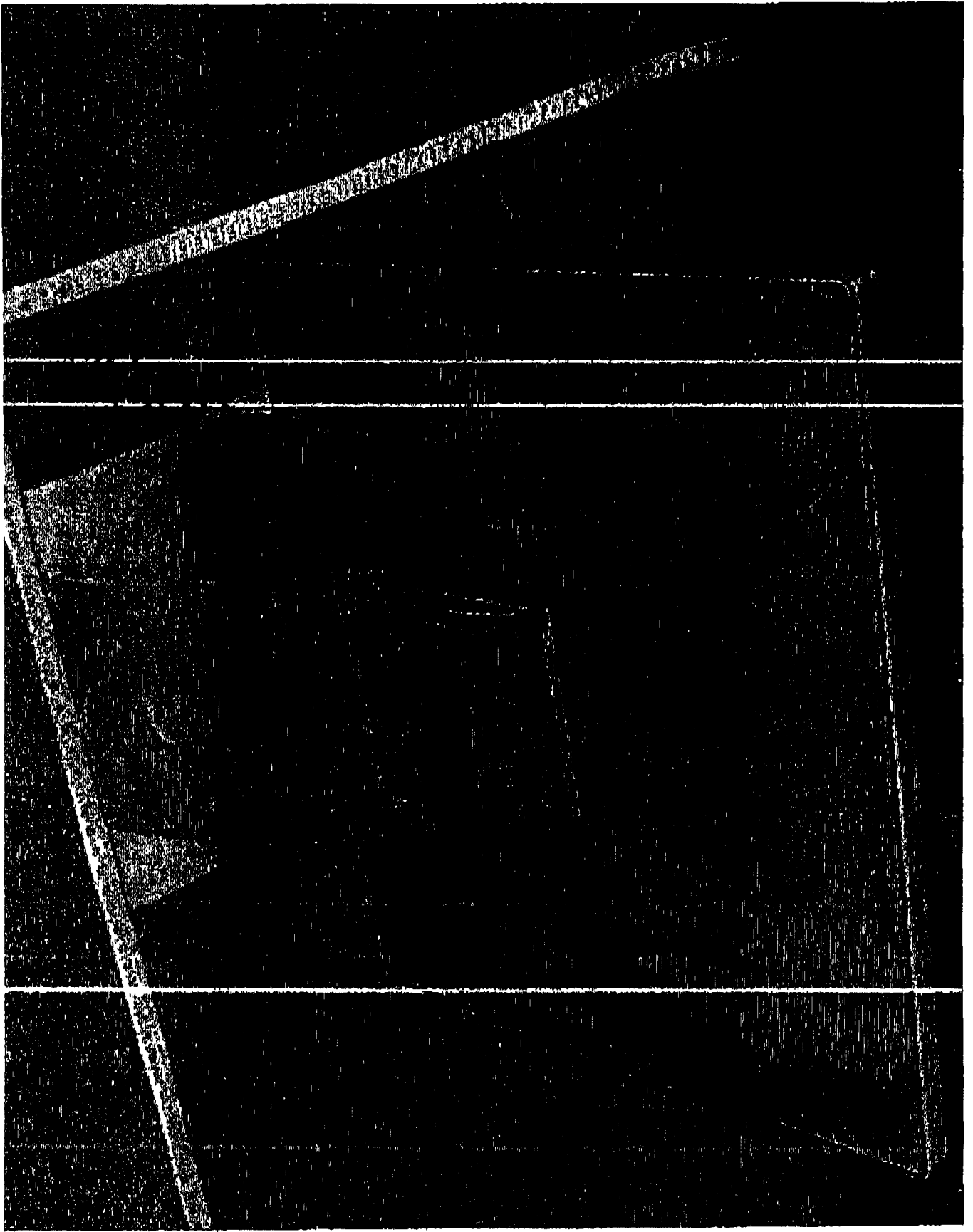
V01-1

Sec. 43

Fig. 5

UNIVERSITY OF TORONTO LIBRARY





File E134827

Vol. 1
and Report

Sec. 43

*Page 5

Issued: 10-31-01
Revised: ~~01-08-02~~
07-19-02

ALTRNATE ENCLOSURE FOR LCD MONITOR MODEL 5XX - FIG. 4

General - Fig. 4 illustrates the overall view of alternate Enclosure for Model 5XX.

Enclosure - Two pieces construction, molded of (QMFZ2), as shown in Fig. 4, rated min. H_v overall measured 380 by 330 by 50.5 mm, 1.5 mm thick minimum.

Ventilation Openings - Provided with numerous openings on the rear, each opening measured 20.5 by 2.0 mm, location as shown in Fig. 4.

Base - Material same as enclosure, the figure of conical, overall 200 by 200 by 130 mm high, secured to enclosure by screws. Provided with weight, riveted onto base, to meet the stability requirement.

~~INVERTER ASSEMBLY - P/N L0067 FOR MODEL 5XX~~

~~General - The inverter assembly of LCD display employs the critical components as follows:~~

~~Capacitors (C14, C15) - Rated 22 uF, 50 kV.~~

~~Transformers (PT1, PT2) - Constructed as follows:~~

~~A. Core - Ferrite, open type, each measured 14.7 by 19.7 by 4.5 mm.~~

~~B. Bobbin - Phenolic, nine flange type, minimum 0.3 mm thick.~~

~~C. Windings (OBW2), rated minimum 130°C, polyethylene covered copper wire, winding information given below:~~

Winding	Diameter (mm) by No. of Wires	No. of Turns
Pin 1-6	0.20 by UEW	3
Pin 2-4	0.27 by UEW	9
Pin 5-3	0.27 by UEW	9
Pin 8-9	0.05 by UEW	1520

~~Alternate Inverter Assembly - P/N L0067A is identical to L0067 except for model designation.~~

File E134827

Vol. 1
and Report

Sec. 43

*Page 6

Issued: 10-31-01
New: 07-19-02

INVERTER ASSEMBLY FOR MODEL 5XX, SAMPO CORPORATION, P/N L0067

General - The inverter assembly of LCD display employs the critical components as follows:

Capacitors (C14, C15) - Rated 22 pF, 3 kV.

Transformers (PT1, PT2) - Constructed as follows:

Core - Ferrite, open type, each measured 14.7 by 19.7 by 4.5 mm.

Bobbin - Phenolic, nine-flange type, minimum 0.71 mm thick.

Windings - (OBW2), rated maximum 130°C, polyurethane covered copper wire, winding information given below:

Winding	Diameter (mm) by No. of Wires	No. of Turns
Pin 1-6	0.20 by UEW	3
Pin 2-4	0.25 by UEW	9
Pin 5-3	0.25 by UEW	9
Pin 8-9	0.05 by UEW	1520

Alternate Inverter Assembly - P/N L0067 is identical to L0067 except for model designation.

ALTERNATE INVERTER ASSEMBLY FOR MODEL 5XX
(SAMPO CORPORATION, P/N L0067)

General - The inverter assembly of LCD display employs the critical components as follows:

Capacitors (C12, C13) - Rated 22 pF, 3 kV.

Printed Wiring Board - See Section General for details. See ILL. 1 for trace layout.

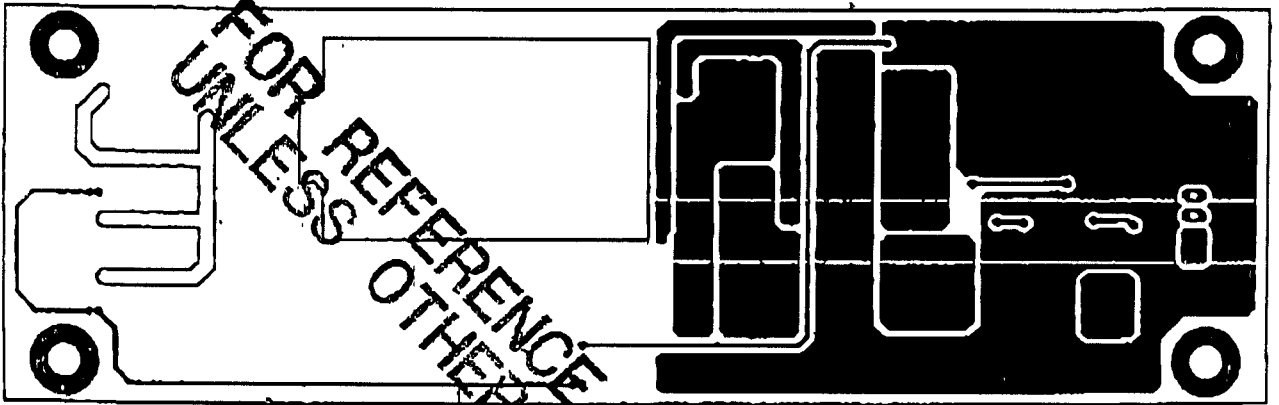
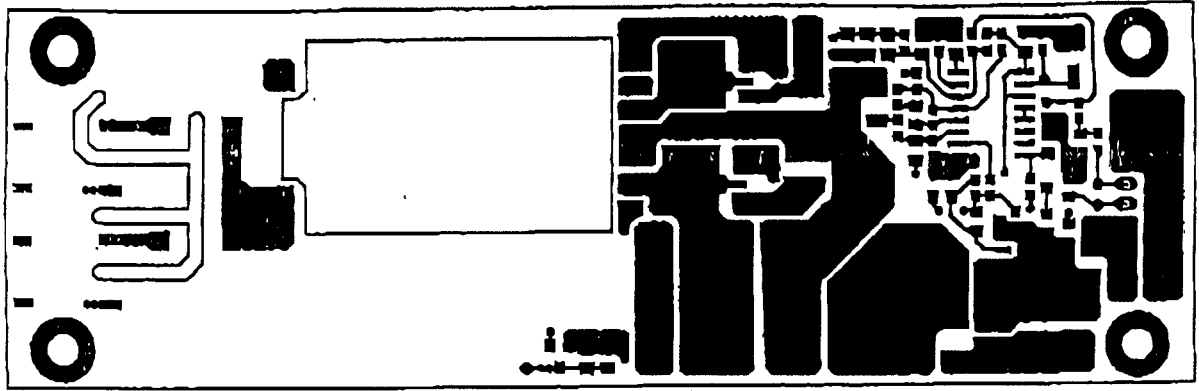
Transformers (PT1) - Open type construction as follows:

Core - Ferrite, open type, each measured 27 by 20 by 4.3 mm.

Bobbin - LCP, ten-flange type, minimum 0.3 mm thick, maximum 130°C.

Windings - (OBW2), rated maximum 130°C, polyurethane covered copper wire, winding information given below:

Winding	Diameter (mm) by No. of Wires	No. of Turns
Pin 1-6	0.40 by UEW	3
Pin 2-4	0.50 by UEW	10
Pin 5-3	0.50 by UEW	10
Pin 8-9	0.06 by UEW	1920



FOR REFERENCE ONLY
UNLESS OTHERWISE SPECIFIED

