



333 Pfingsten Road  
Northbrook, Illinois  
United States Coun  
(847) 272-6800  
FAX No. (847) 272-  
<http://www.ul.com>

File E133459  
Project 00NK90748

July 28, 2000

REPORT

on

INFORMATION TECHNOLOGY EQUIPMENT INCLUDING  
ELECTRICAL BUSINESS EQUIPMENT

Compal Electronics Inc.  
Taipei, Taiwan

Copyright © 2000 Underwriters Laboratories Inc.

Underwriters Laboratories Inc. authorizes the above named company to reproduce this Report provided it is reproduced in its entirety.

333 Pfingsten Road  
Northbrook, Illinois 600  
United States Country  
(847) 272-8800  
FAX No. (847) 272-8  
<http://www.ul.com>

 **Underwriters Laboratories Inc.**

File E133459  
Project 00NK90748

July 28, 2000

REPORT

on

INFORMATION TECHNOLOGY EQUIPMENT INCLUDING  
ELECTRICAL BUSINESS EQUIPMENT

Compal Electronics Inc.  
Taipei, Taiwan

Copyright © 2000 Underwriters Laboratories Inc.

Underwriters Laboratories Inc. authorizes the above named company to reproduce this Report provided it is reproduced in its entirety.

RC/LCL:lmw  
DMS

A not-for-profit corporation  
dedicated to put to use  
submitted to us by

## CONSTRUCTION DETAILS:

See Sec. Gen. for additional details.

Interconnecting Cable Marking - Detachable interconnecting cables with terminations, which are furnished as part of the system and use (AVLV2), cable, shall be marked, or similarly identified in the installation instructions, with the Listee's name or trade name and identifying designation. If marked, the marking may be applied on the cable at any location, and is not required to be (PGDQ2) or (PGJI2).

Interconnecting Cables - Detachable, flexible cord or flexible cable assemblies used for external interconnection between parts of equipment or between components of system are: (AVLV2), CN, computer cable, marked "VW-1", rated minimum 30 V, maximum 2 m.

Operating/Instruction/Safety Manual - Provide with each unit. If power unit is not provided with unit, the manual shall include an instruction to select an appropriate power unit.

## LCD MONITOR MODEL CX8XX - FIG. 1 AND FIG. 2

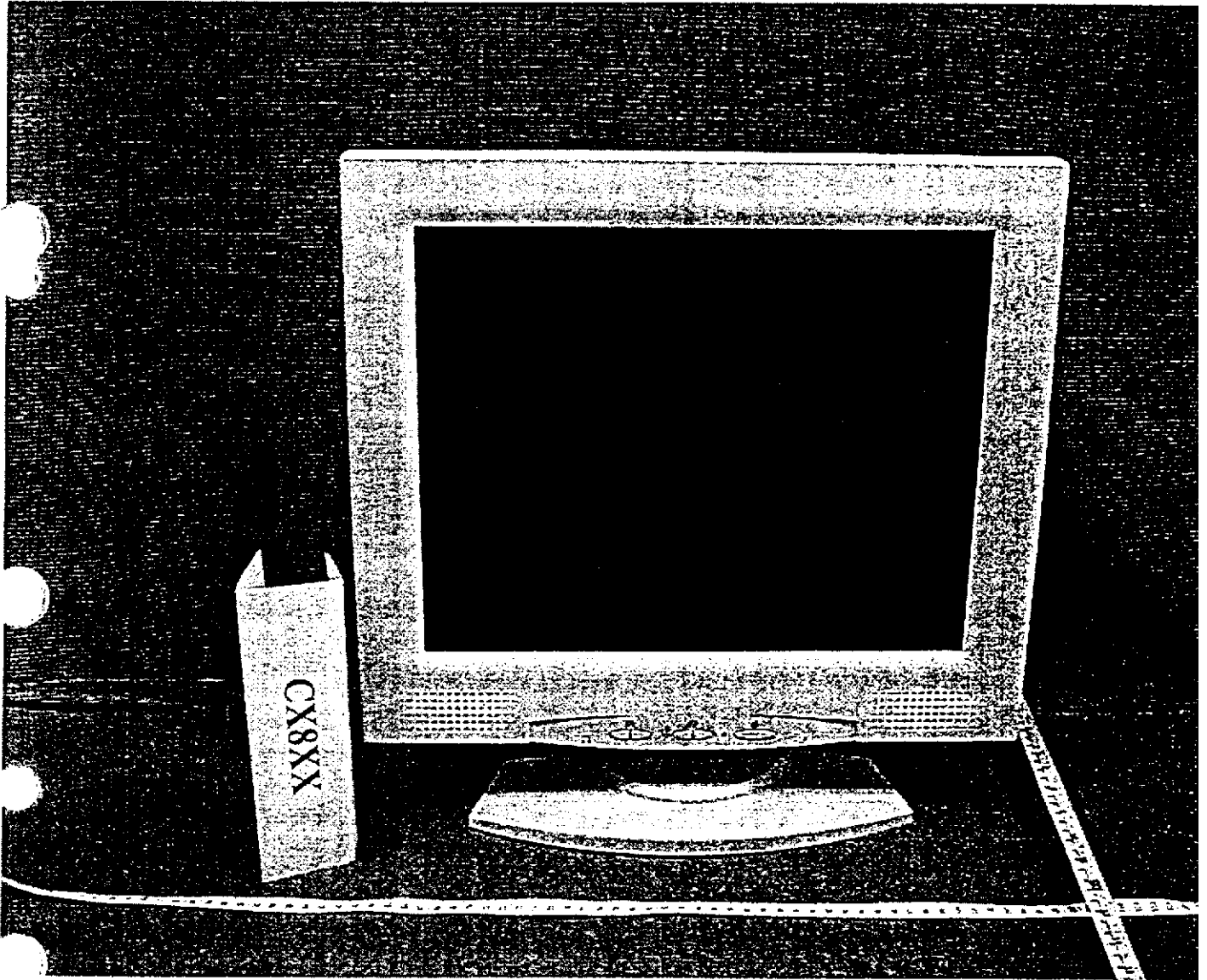
General - Fig. 1 illustrates the front view of Model ~~CX3XXX~~<sup>CX8XX</sup>, and Fig. 2 shows its rear. The general design, shape and arrangement shall be as illustrated except where variations are specifically described.

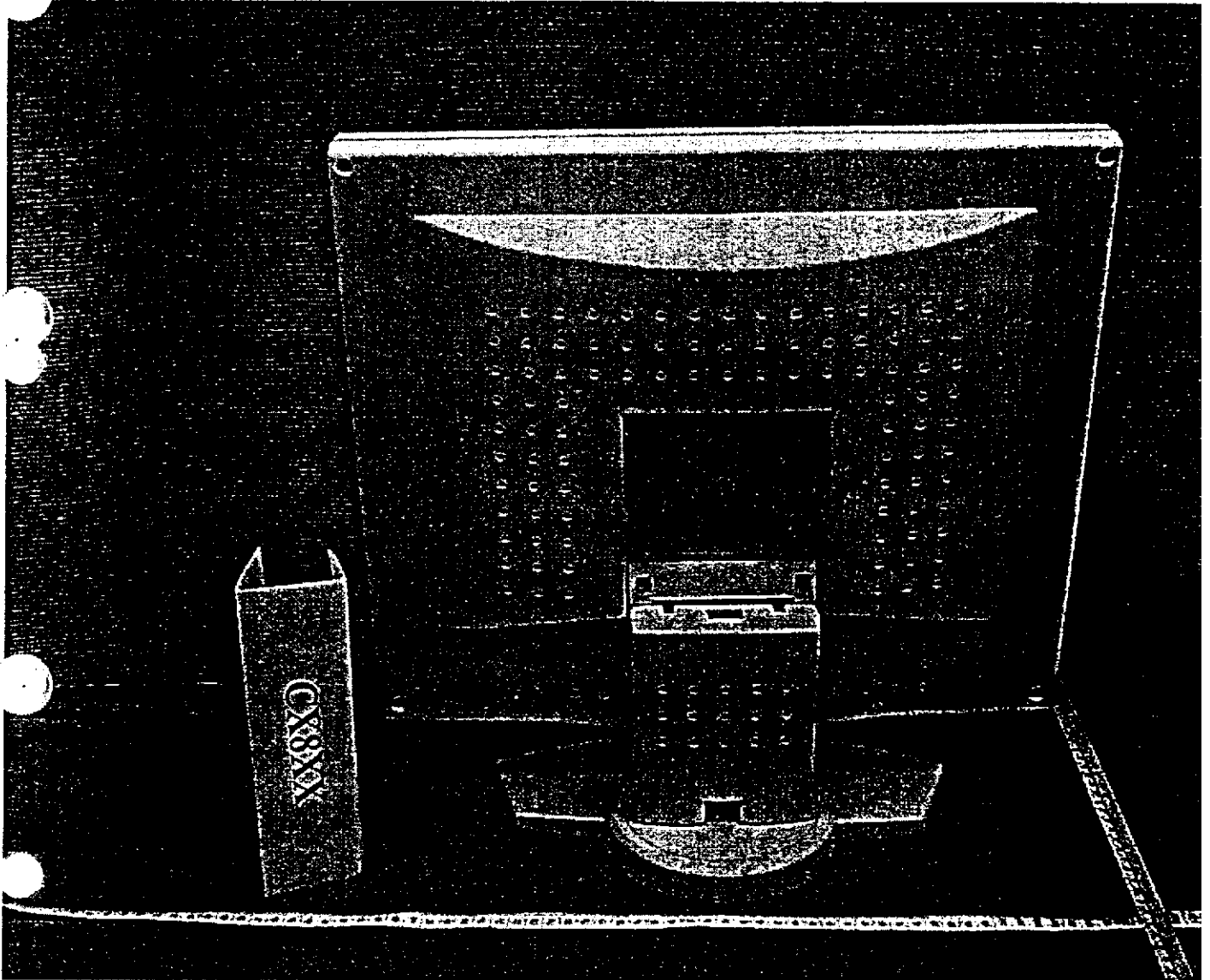
Enclosure - Two pieces construction, front and rear, molded of (QMF22), rated minimum HB, overall measured 423 by 318 by 65 mm, 3.0 mm thick minimum, having one 339 by 270 mm opening for LCD panel at the front. Provided with cut out 113 mm by 89 mm at center of rear for fitting the base neck by adjustable hinge.

Ventilation openings - Provided with numerous openings on the rear, each measured 3.0 mm diameter, location as shown in Fig. 2.

Power Supply - Optional, Listed, CN, marked "LPS" on the unit, rated input 100-240 V ac, 50-60 Hz, maximum 1.5 A; output 12 V dc, minimum 5 A.

Base - Material same as enclosure, overall 290 by 177 by 23 mm high, secured to enclosure by screws. Provided with weight, riveted onto base, to meet the stability requirement.





INVERTER ASSEMBLY FOR MODEL CX8XX - Fig.3  
(Compal Electronics Inc., P/N: PK010006700 )

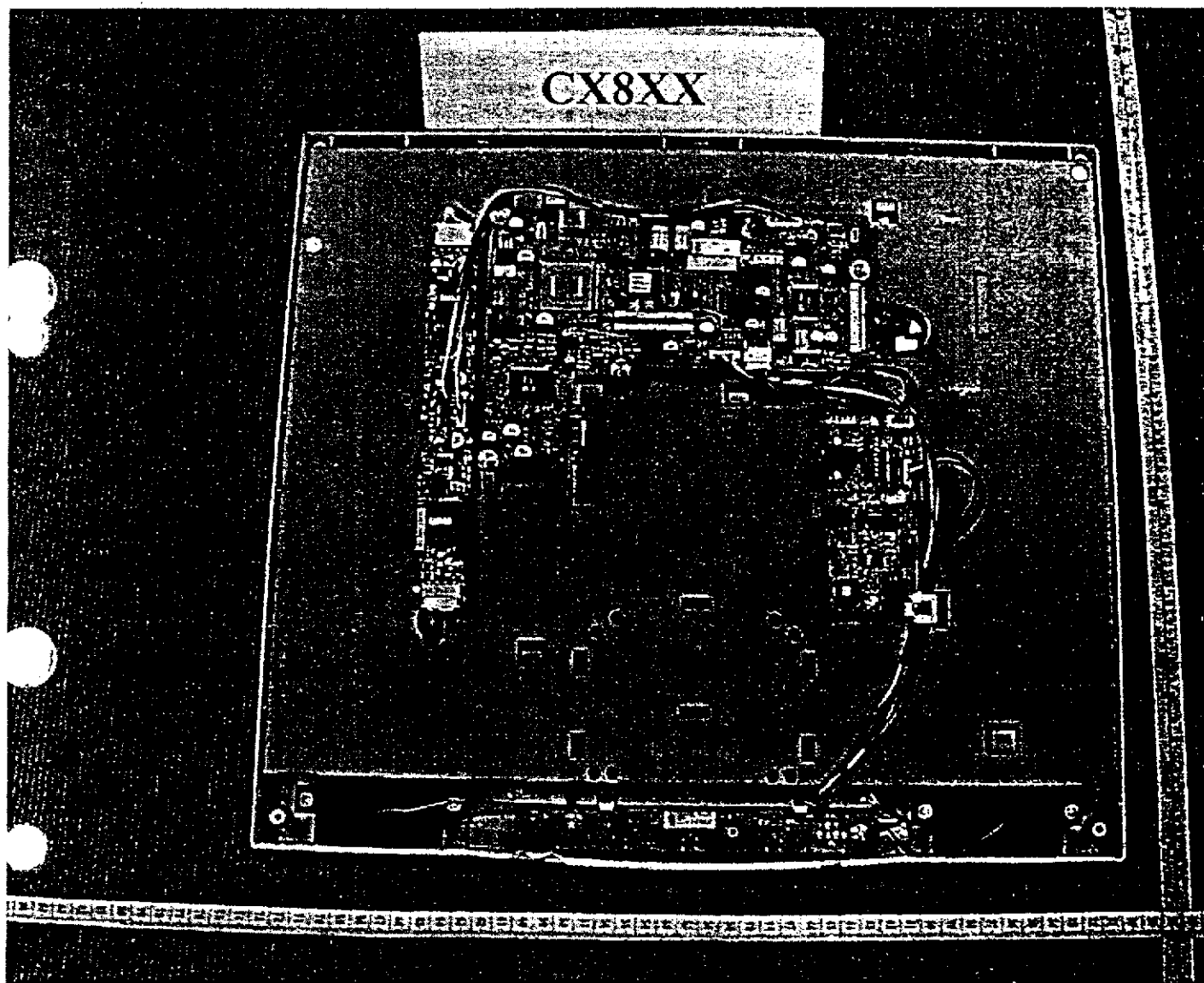
General - The inverter assembly of LCD display employs the critical components as follows:

Capacitors (C28, C29, C15, C16) - Rated 22 pF, 3 KV.

Transformers (T1, T2) - Constructed as follows:

- A. Core - Ferrite, open type, each measured 23.0 by 13.3 by 4.0 mm.
- B. Bobbin - Phenolic, nine-flange type, minimum 0.38 mm thick.
- C. Windings - (OBMW2), rated minimum 130°C, polyurethane covered copper wire, winding information given below:

<u>Winding</u>	<u>Diameter (mm) by No. of wires</u>	<u>No. of Turns</u>
Pin 4-3 (Primary)	0.3 by 1UEW	8
Pin 3-2 (Primary)	0.3 by 1UEW	8
Pin 5-1 (Primary)	0.16 by 1UEW	2
Pin 6-7 (Secondary)	0.06 by 1UEW	1300





## ALTERNATE INVERTER ASSEMBLY FOR LCD MONITOR

General - Manufactured by Compal Electronics Inc., Par No. PK070006710 (Ambit, P/N T51I036.01) and PK070009700 (Ambit, P/N T51I043.00) which were similar to P/N PK010006700 except variation described as follows:

Printed Wiring Board - See ILL. 1 for P/N PK070006710 and ILL. 2 for P/N PK070009700, details described in Sec. Gen.

Capacitors - Rated and component designation refer to each inverter were individual described below:

<u>Inverter Part No.</u>	<u>Component Designation</u>	<u>Rated</u>
PK070006710	C15, C16, C28, C29	220 pF, 3 kV
PK070009700	C24, C25, C26, C27	27 PF, 3 kV

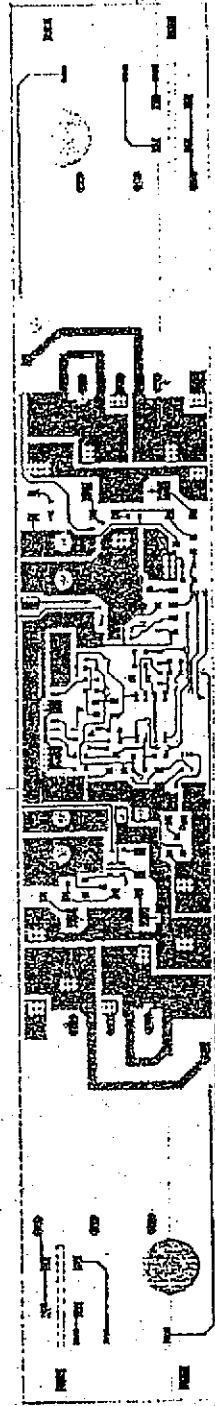
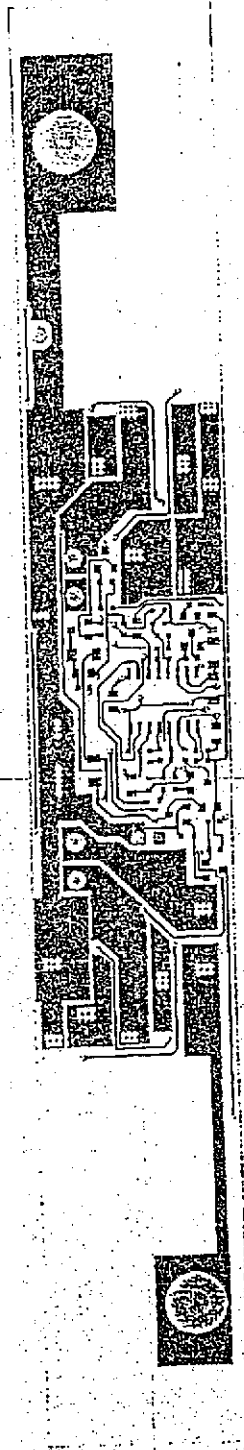
Transformer (T1, T2) - Similar to P/N PK010006700 except constructed as follows:

<u>Inverter</u>	<u>Core Dimensions (mm)</u>	<u>Bobbin</u>
PK070006710	25.0 by 17.0 by 8.6	(QMFZ2), min. V-2
PK070009700	24.0 by 20.0 by 9.0	(QMFZ2), min. V-2

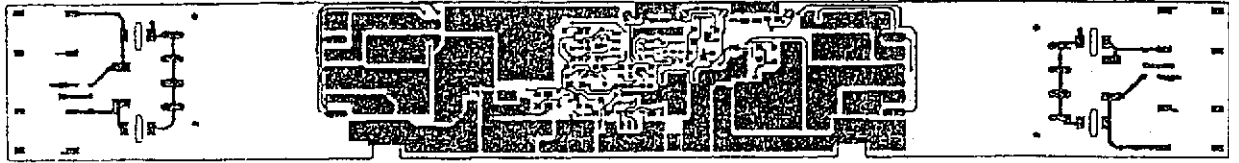
Winding Information for Transformer - List below:

<u>Inverter</u>	<u>Winding</u>	<u>Diameter (mm)/ Turns</u>
PK070006710	Primary (Pin 4-3)	0.3 * 1 UEW / 8
	Primary (Pin 3-2)	0.3 * 1 UEW / 8
	Primary (Pin 5-1)	0.16* 1 UEW / 3
	Secondary (Pin 6-7)	0.06* 1 UEW / 1300
PK070009700	Primary (Pin 5-3)	0.37* 1 UEW / 8
	Primary (Pin 4-2)	0.37* 1 UEW / 8
	Primary (Pin 6-1)	0.16* 1 UEW / 3
	Secondary (Pin 7-11)	0.06* 1 UEW / 1450

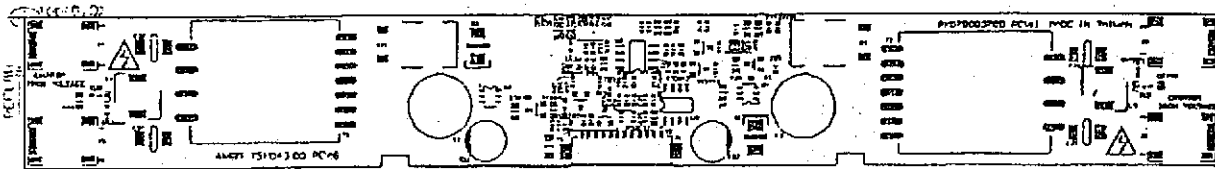
and Report



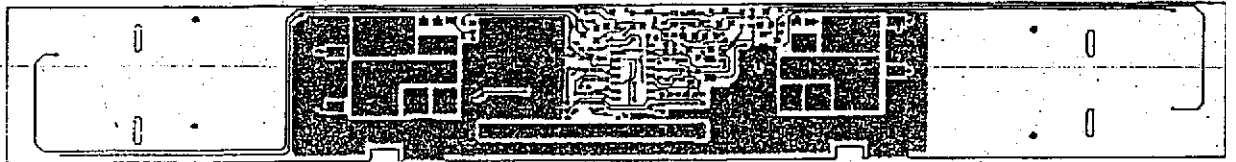
**REVISED**  
JUL 02 2001  
UNDERWRITERS  
LABORATORIES INC.



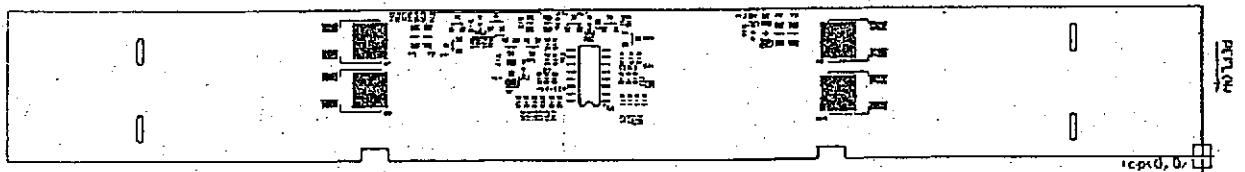
8-2. Bottom Layer:



8-3. Top Silk Screen Overlay:



8-4. Bottom Silk Screen Overlay:



**REVISED**  
JUL 02 2001  
UNDERWRITERS  
LABORATORIES INC.

## DESCRIPTION

## PRODUCT COVERED:

UL/CNL      LCD Monitors, Models CX8XX, where X can be any alphanumeric character or blank.

## ELECTRICAL RATINGS:

12 V dc, 5.0 A

## ENGINEERING CONSIDERATION (NOT FOR FIELD REPRESENTATIVE'S USE):

Special Considerations - The following items are considerations that were used when evaluating this product.

USL/CNL - indicates investigation to the U.S. and Canadian (Bi-National) Standard for Safety of Information Technology Equipment, Including Electrical Business Equipment, CAN/CSA C22.2 No. 950 \* UL 1950, Third Edition, including revisions through revision date March 1, 1998, which are based on the Fourth Amendment to IEC 950, Second Edition.

The equipment was submitted and tested for a maximum manufacturer's recommended ambient (Tmra) of 40°C.

The equipment is considered movable, Class III (supplied by SELV).

Limited Current Circuits: The following accessible locations are part of a limited current circuits:

\_\_\_\_\_ Location \_\_\_\_\_

Secondary side of inverter