

LCD Monitor

Quick Start Guide



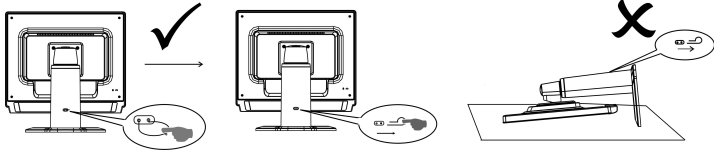
Safety Instructions

Observe the following safety guidelines when connecting and using your monitor:

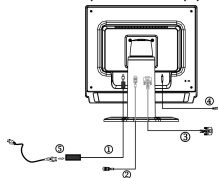
- Be sure that your monitor is electrically rated to operate with the AC power available in your location.
- Locate your monitor near an easily accessible electrical outlet.
- Place the monitor on a solid surface and treat it carefully. The screen can be damaged if dropped, sharply hit, or touched with a sharp or abrasive implement.
- Put your monitor in a location with low humidity and a minimum of dust.
- Never use your monitor if the power cable has been damaged. Do not allow anything to rest on the power cable, and keep the cable away from where people could trip over it.
- Never insert anything metallic into the monitor openings. Doing so may create the danger of electric shock.
- To avoid electric shock, never touch the inside of the monitor. Only a qualified technician should open the monitor's case.
- Be sure to hold the plug, not the cable, when disconnecting the monitor from an electrical outlet.
- Openings in the monitor cabinet are provided for ventilation. To prevent overheating, these openings should not be blocked or covered. Also, avoid using the monitor on a bed, sofa, rug, or other soft surface. Doing so may block the ventilation openings in the bottom of the cabinet. If you put the monitor in a bookcase or some other enclosed space, be sure to provide adequate ventilation.
- Do not expose the monitor to rain or use it near water. If the monitor accidentally gets wet, unplug it and contact an authorized dealer immediately. You can clean the exterior of the monitor with a damp cloth when necessary, but be sure to unplug the monitor first.
- If your monitor does not operate normally—in particular, if there are any unusual sounds or smells coming from it—unplug the monitor immediately and contact an authorized dealer or service center.



Connecting Your Monitor to a Computer



Pull out the pin from the display support frame as per the figure and then adjust the height. Note that upon pulling out the pin, erect the machine on the table to prevent the top part of the display from ejecting.



Turn off your computer before performing the procedure below.

1. Connect the power adapter dc cable to the DC-In port on the back of the monitor.
2. Connect one end of the 15-pin D-Sub cable to the back of the monitor and connect the other end to the computer's D-Sub port.
3. (only Dual-Input Model) Connect one end of the 24-pin DVI cable to the back of the monitor and connect the other end to the computer's DVI port.
4. Connect the audio cable between the monitor's audio input and the PC's audio output (green port).
5. Plug the power cable of your monitor into a nearby outlet. Plug the other end of the power cord into the power adapter.
6. Turn on your monitor and computer.

If your monitor displays an image, installation is complete. If it does not display an image, refer to the troubleshooting section of this guide.

Troubleshooting Tips

No Power - The monitor's power indicator is off.

- Make sure the monitor power cable is fully inserted in the monitor's power port and the electrical outlet.
- Test the electrical outlet by plugging in a working electrical device such as a lamp.
- Try another power cable on the monitor. You can use the computer's power cable to perform this test.

No Video - The monitor's power indicator is on but there are no image on the screen.

- Ensure that the video connector is properly connected to the computer.
- Ensure that the computer is on and functioning properly.
- Turn off the monitor and check the video cable pins. Make sure no pins are bent.

Operating Detail

Please refer to user's guide in CD-ROM packaged with this monitor.

