

Acer LCD monitor Quick Start Guide (QSG)

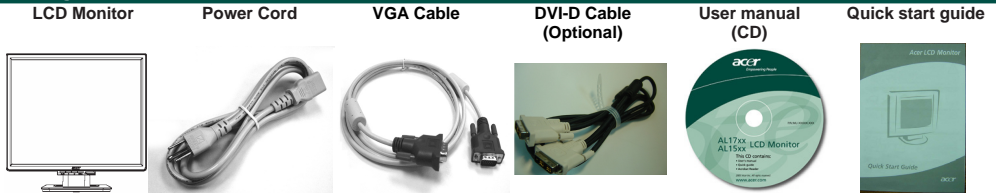
Important Safety Instructions



Please read the following instructions carefully. This manual should be retained for future use.

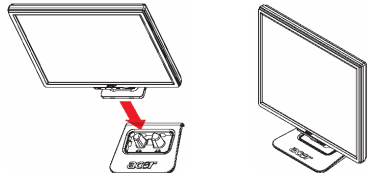
1. To clean LCD Monitor screen;
 - Power off LCD Monitor and unplug the AC Cord.
 - Spray a non-solvent cleaning solution onto a rag and clean the screen gently.
2. Do not place the LCD Monitor near a window. Exposing the monitor to rain water, moisture or sunlight can severely damage it.
3. Do not apply pressure to the LCD screen. Excess pressure may cause permanent damage to the display.
4. Do not remove the cover or attempt to service this unit by yourself. Servicing of any nature should be performed by an authorized technician.
5. Store LCD Monitor in a room with a room temperature of -20° ~ 60°C (or -4° ~ 140°F). Storing the LCD Monitor outside this range could result in permanent damage.
6. If any of the following occurs, immediately unplug your monitor and call an authorized technician.
 - * Monitor to PC signal cable is frayed or damaged.
 - * Liquid spilled into LCD Monitor or the monitor has been exposed to rain.
 - * LCD Monitor or the case is damaged.

Package contents



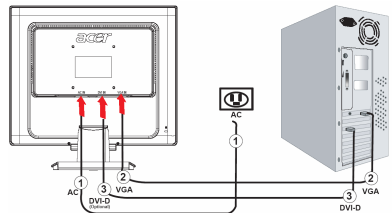
Assembly Your Monitor with Monitor Base

- Take out the monitor base from monitor box and place on a stable and level workspace
- Take out your monitor and assembly with the base. Make sure you heard click sound

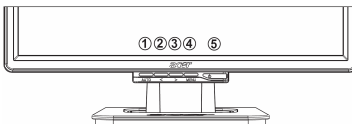


Connecting Your Monitor to a Computer

- Turn off your computer and unplug your computer's power cable.
- Connect the signal cable to the VGA input socket of the monitor and connect the signal cable to the VGA output socket of the graphics card on the computer. Then tighten the thumbscrews on the connector.
- Optional: the signal cable to the DVI-D input socket of the monitor and connect the signal cable to the DVI-D output socket of the graphics card on the computer. Then tighten the thumbscrews on the connector.
- Insert the monitor power cable into the power port on the back of the monitor.
- Plug the power cables of your computer and your monitor into a nearby electrical outlet.
- Turn on your computer and monitor.



Operating Your Monitor



1	Auto	Auto configuration	If OSD is active, press to exit. If OSD is inactive, press and the monitor will automatically optimize the display position, clock and phase of your display.
2	<	Minus	If OSD is active, press to select or adjust OSD options.
3	>	Plus	If OSD is active, press to select or adjust OSD options.
4	Menu	OSD manual	Press to view OSD. Press again to enter a selection in OSD.
5		power	Power on/off Green: power on Orange: in sleep mode