

Acer FP855

LCD Color Monitor

18.1" (45.9cm) LCD Panel Size

English

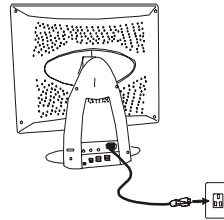
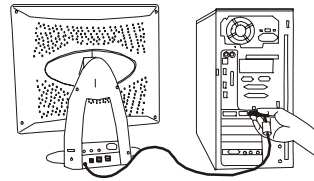
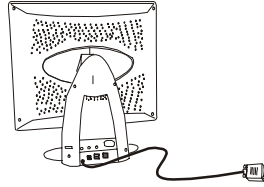


Installing the Monitor



This monitor is equipped with an auto-sensing power supply for voltage ranges 100~240V AC, 50~60Hz.

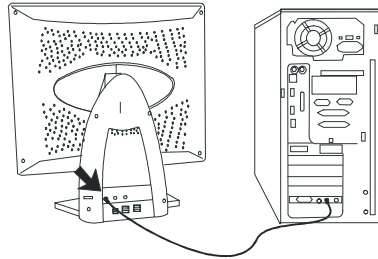
1. Make sure that the system power is turned off.
2. Plug the signal cable to the signal connector at the rear of PC.
3. Plug the end of power cord to the monitor.
4. Connect the other end of power cord to power source.
5. Turn on the computer and the monitor.



Connecting the Microphone

After connecting the microphone, you can use recording programs to record or edit audio files.

1. Turn the system power off.
2. Plug one end of audio cable to LINE IN port at the rear of computer and the other end to the microphone connector.
3. Turn on the computer and the monitor.

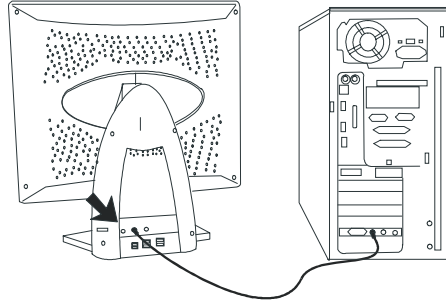


☞ To record, you don't need to get close to the microphone. Staying in usual operation position allows you to achieve perfect recording performance.

Connecting the Speaker

This model is equipped with built-in speakers. After connecting the speaker, you can enjoy music easily.

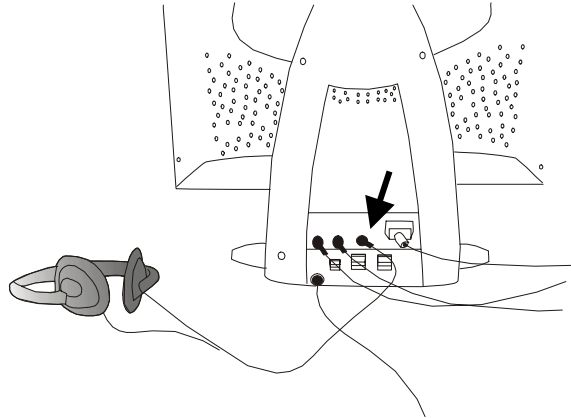
1. Turn the system power off.
2. Plug one end of audio cable to the LINE OUT port at the rear of computer and the other end to the speaker port at the back of monitor.
3. Turn on the computer and the monitor.



☞ *To adjust the audio volume, use the volume control at the right side of your monitor.*

Connecting the Earphone

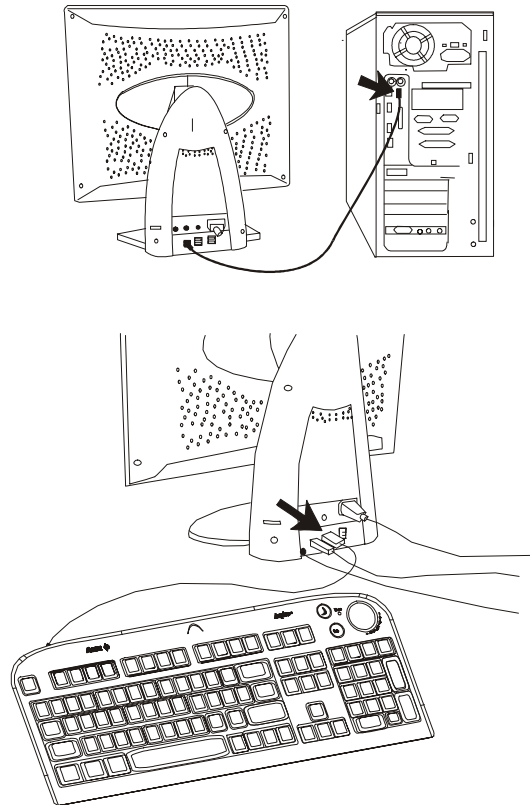
Just plug your earphone to the earphone connector at the rear of monitor, you don't worry to disturb others while enjoying the audio entertainment.



Connecting your USB Devices

With its USB compliance, you can connect any USB compliant device on one universal connector. Up to four devices can be connected to the USB connectors.

1. Turn the system power off.
2. Connect the USB cable to the computer and the USB up port at the rear of monitor.
3. Connect the USB cable supplied with other peripherals to USB connectors and your peripherals.
4. Turn on the computer and the monitor.



CD Installation

2

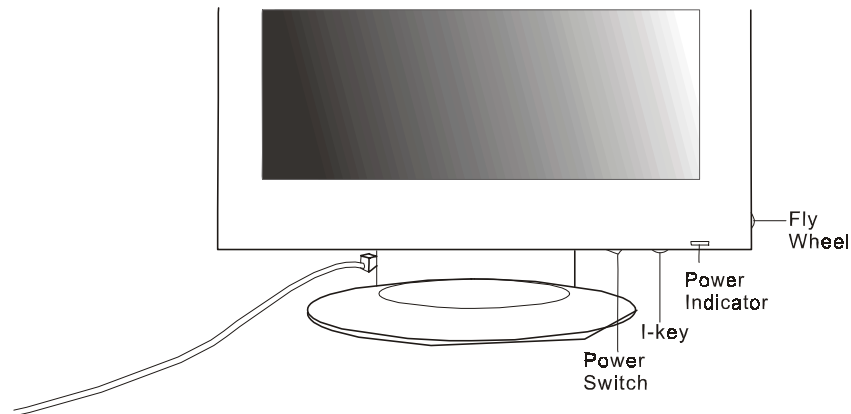
When you place this CD-ROM into your CD-ROM drive, the system will execute "monitor.htm" automatically. If you can't read it by Windows autorun, please open "acerlcd.htm" by your Internet browser or double click "monitor.htm" file.

☞ *If you don't have any Internet browser such as Microsoft Internet Explorer or Netscape Navigator, this CD-ROM provides you Microsoft Internet Explorer 5.0 for English Version.(Microsoft Internet Explorer is the product of Microsoft Corp., all rights reserved.)*

☞ *If there is any question, please e-mail us at apidisplaycsd@api.com.tw*

A Look at the Control Panel

3



Power Switch: turns on or off the power.

I-Key button: intelligent key used for auto-adjustment of color temperature, V-Position, Phase, H-Position and Pixel Clock.

Fly Wheel: rotates and presses to make OSD adjustments.

Audio Volume Control: rotates to adjust the audio volume.

Supported Timings

Input display data					Multi-scan operation
Resolution	Horizontal Frequency (Khz)	Vertical Frequency (Hz)	Dot Clock Frequency (MHz)	Remark	Actual display resolution
640 x 350	31.47	70.08	25.17	DOS	Full screen 1280 x 1024
640 x 350	37.86	85.10	31.50	VESA	
720 x 400	31.47	70.08	28.32	DOS	
720 x 400	37.93	85.00	35.50	VESA	
640 x 480	35.00	67.00	30.24	Macintosh	
640 x 480	31.47	60.00	25.18	DOS	
640 x 480	37.86	72.80	31.50	VESA	
640 x 480	37.50	75.00	31.50	VESA	
640 x 480	43.27	85.00	36.00	VESA	
800 x 600	35.16	56.25	36.00	VESA	
800 x 600	37.88	60.32	40.00	VESA	
800 x 600	48.08	72.19	50.00	VESA	
800 x 600	46.87	75.00	49.50	VESA	
800 x 600	53.67	85.10	56.25	VESA	
832 x 624	49.72	74.55	57.29	Macintosh	
1024 x 768	48.36	60.00	65.00	VESA	
1024 x 768	56.48	70.10	75.00	VESA	
1024 x 768	60.02	75.00	78.75	VESA	
1024 x 768	35.52	86.95	44.96	Interlace	
1024 x 768	60.24	74.93	80.00	Macintosh	
1280 x 1024	64.00	60.00	108.00	VESA	
1280 x 1024	80.00	75.00	135.00	VESA	

Troubleshooting and Useful Hints **4**

Troubleshooting

Make sure that your monitor is properly installed if you have encountered any trouble using this product.

- ✓ Can't find Acer FP855 on the Windows 95® or Windows 98® monitor lists.
 - You need to update the Windows 95® or Windows 98® setup information for your Acer FP855. You can download the updated file from the web site (<http://www.acerperipherals.com.tw/products/md/service/index.htm>).
- ✓ There is no picture on the screen.

Check:

 - Power saving mode. Press any key or move the mouse to deactivate the mode.
 - Signal cable connector pins. If there are bent or missing pins, consult your place of purchase.
- ✓ The picture is unstable.

Check:

 - Signal cable connector pins. If there are bent or missing pins, consult your place of purchase.
 - Graphics card. See if the settings are made properly.
 - Scanning frequency. Change the settings of your graphics card to acceptable options.
- ✓ Characters look too dark or too light.
 - Adjust related settings.
- ✓ The speakers don't work.

Check:

 - Audio cable. See if the audio cable is connected to PC's "LINE-OUT" port and monitor's speaker port.
 - Volume control. Make sure that the volume control at the rear of monitor base is set to proper volume.

- ✓ The microphone doesn't work.
Check:
 - Audio cable. See if the audio cable is connected to PC's "LINE-IN" port and monitor's microphone port.
- ✓ There is noise from speakers when using the microphone.
 - Set microphone item of volume control function in Windows 95® or Windows 98® to "MUTE".
Please adjust as following steps:
 1. Double click the speaker icon in Windows 95® or Windows 98® desktop.
 2. In the volume control window, set the microphone item to "MUTE".
- ✓ I key does not function properly and "unsupported" message shows.
 - In some non-full-screen patterns, the i-key function couldn't work properly and an "unsupported" OSD will pop up. In this situation, you need to use the fly wheel to adjust your screen rather than i key.
- ✓ The sound of speakers distorts and the screen flashes when using speakers.
 - Check whether the audio cable is connected to "Line Out" port of PC rather than the "Speak Out" port.

Need More Help?

If your problems remain after checking this manual, please contact your place of purchase or e-mail us at: APIDisplayCSD@api.com.tw