

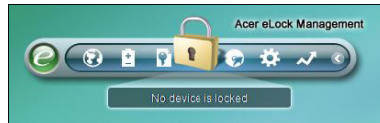
# Acer eLock Management

Acer eLock Management protects your data by allowing you to control access to external storage devices (removable storage devices, floppy, optical and network drives), data interfaces (Bluetooth, infrared, serial and parallel) and printers.

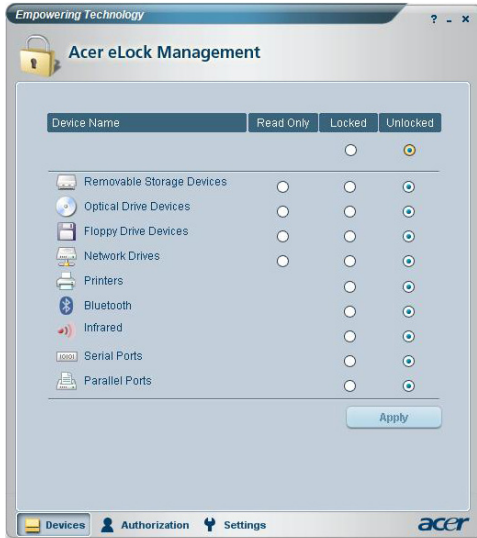
## Using Acer eLock Management

To launch Acer eLock Management:

- Click the Acer eLock Management icon in the Empowering Technology toolbar shown on your desktop.
- From the Start menu, go to (All) Programs > Acer Empowering Technology > Acer eLock Management.



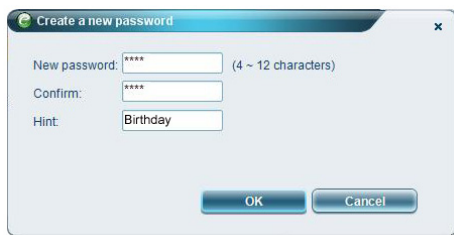
This will open the Acer eLock Management main page. Listed on the main page are the devices and interfaces you can **Lock**, **Unlock** or set to **Read Only**.



Before you control any devices, you need to define a password for Acer eLock Management. Do this by right-clicking on the Empowering Technology toolbar and selecting **Password Setup**.

## Setting a password

Use **Password Setup** from the Empowering Technology toolbar to set the Empowering Technology password. If it has not yet been initialized, you will also be asked to create the Empowering Technology password when using Acer eLock Management for the first time.



Create a new password

New password:  (4 ~ 12 characters)

Confirm:

Hint:

OK Cancel



**Note:** The password needs to be between four and twelve alphanumeric characters. If you forget your password, you will need to take your computer to an Acer Customer Service Center.

## Changing device and interface status

With Acer eLock Management, you can lock and unlock removable storage devices, floppy, optical and network drives, as well as Bluetooth, infrared, serial and parallel ports, plus printers. You can also set removable storage devices, floppy, optical and network drives to read only mode.

**Step 1:** Control the drives by selecting the appropriate **Locked**, **Unlocked** or **Read Only** button, and clicking **Apply**.

**Step 2:** Enter the Empowering Technology password to lock, unlock or set to read only the selected device(s).





Enter password

Please enter your Empowering Technology password.

Password:

OK Cancel

## Widget mode

Click the  icon on the Empowering Technology toolbar or press the  Empowering Key to enter Widget mode. Using the Acer eLock Management widget, you can lock or unlock all devices and interfaces quickly.



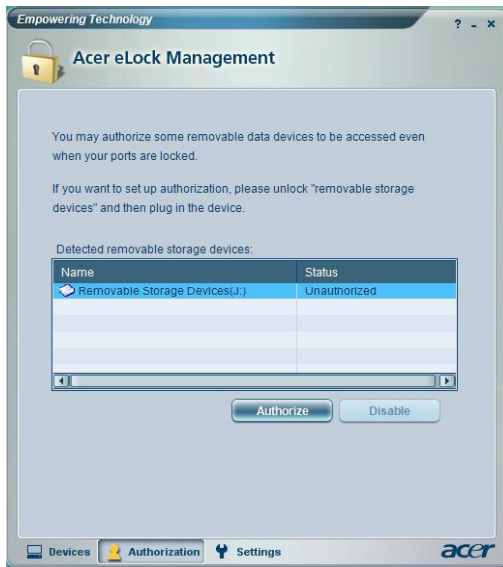
## Authorizing personal drives

If you have a personal removable storage device that you use frequently with your computer, you can authorize it from the **Authorization** page so that it can be used even when removable storage devices is set to Lock or Read Only mode.

Step 1: Make sure **Removable Storage Devices** is set to **Unlocked**.

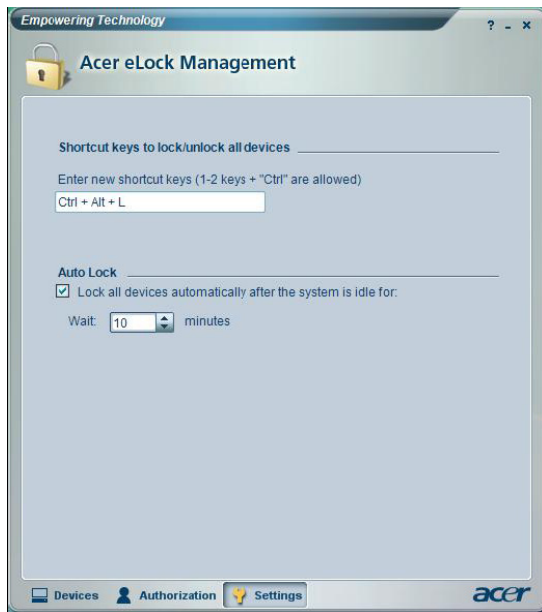
Step 2: Select one device in the **Detected removable storage devices** list with status **Unauthorized**.

Step 3: Click the **Authorize** button to authorize this device



## Changing settings

Use the **Settings** page to set a hot key to lock or unlock all devices. You can also enable an auto lock timer that locks all devices automatically when the system has been idle for a certain time.



## Locked devices

Locked devices are indicated with different icons.

Locked devices	Lock	Read Only	Unlock
Removable data devices			System default icon
Optical device			System default icon
Floppy device			System default icon
Network hard drive			System default icon