

Acer ePower Management

Acer ePower Management is a tool that provides you with an easy, reliable and safe means of selecting a power scheme that balances your needs for extended battery life and processing power.

Using Acer ePower Management

To launch Acer ePower Management:

- Click on the Acer ePower Management icon in the **Empowering Technology toolbar** shown on your desktop.
- From the Start menu, go to **(All) Programs > Empowering Technology > Acer ePower Management**.



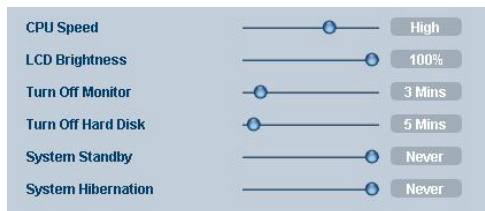
This will open the Acer ePower Management main page.



Acer ePower Management Main Page

The Acer ePower Management main page is where you can select the power scheme that best suits your needs, or you can define your own power schemes. You can also temporarily adjust the current power scheme if you need to.

You can adjust the following settings:



- CPU Speed — selecting a lower speed will increase battery life.
- LCD Brightness — a lower brightness will increase battery life.
- Turn Off Monitor — select how long you wish to wait before the LCD screen is turned off.
- Turn Off Hard Disk — select how long you wish to wait before turning off the hard disk.
- System Standby — defines how long the system will stand idle before switching to Standby mode.
- System Hibernation — defines how long the system will stand idle before switching to Hibernation mode.

You can also extend the battery life by switching off power to the following devices if you don't need to use them:



- Wireless LAN
- Wired LAN
- Bluetooth
- Cardbus (PC Card slot)
- FireWire (IEEE 1394)

Current battery status

Below the list of profiles, near the top of the page, you can view remaining battery life. Click on the information icon to the right to view estimated battery life in Hibernation and Standby modes.



Defining a new power profile

To define a new power profile:

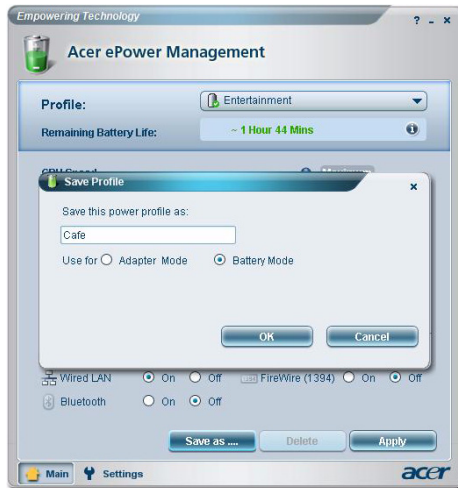
Step 1: Modify the power settings as desired on the main page.

Step 2: Click "Save as...".

Step 3: Enter a descriptive name for the profile.

Step 4: Choose whether the new profile is for use in adapter or battery mode.

Step 5: Click "OK".



The new profile will be shown in the profile list on the main page..



Select the new profile and click Apply to activate it.

System tray icon

By right-clicking on the Acer ePower Management icon in the task tray, you can enable or disable system components to save power, adjust CPU speed and monitor brightness, and switch power profiles.



Advanced Settings

Click **“Settings”** on the bottom left-hand corner of the main page to switch to the Settings page. Here you can define a variety of actions that your computer will take.



Alarm

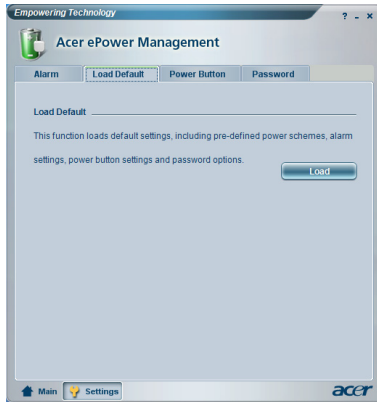
Select this tab to define how and when you will be warned of low battery charge. You can choose at what level you will be warned, and define what action (if any) you want the computer to take.



You can also define a critical battery level alarm, and whether your system should switch to Standby or Hibernation mode.

Load Defaults

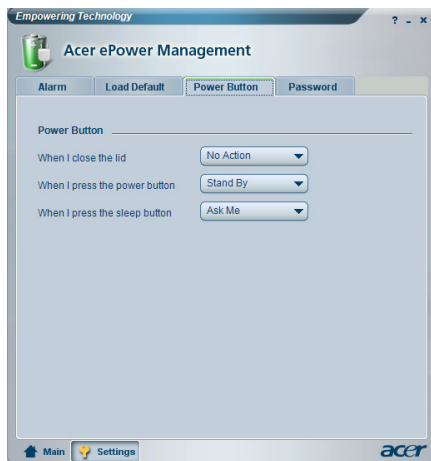
Under this tab, you can reset Acer ePower Management to its default state.



Power button

Use this function to define how your notebook will react to:

- The lid closing — whether to switch to Standby or Hibernation mode, or to take no action.
- When the power button is pressed — whether to turn off, switch to Standby or Hibernation mode, take no action, or ask you what to do.
- When the sleep button is pressed — whether to turn off, switch to Standby or Hibernation mode, take no action, or ask you what to do.



Password

Here you can set a password that is required when returning from Standby or Hibernation mode to protect your computer against unauthorized access.

