

Acer ePresentation Management

Acer ePresentation Management offers you a quick and easy way of setting your notebook PC's resolution when using a projector or other external display device.

Acer ePresentation Management has two common resolutions pre-defined. Selecting either one will set the monitor and external display resolution.

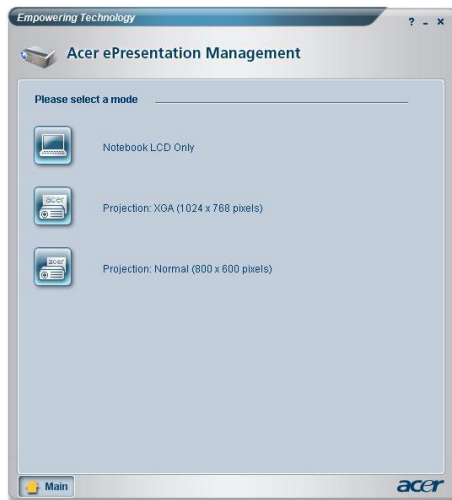
Using Acer ePresentation Management

To launch Acer ePresentation Management:

- Click on the Acer ePresentation Management icon in the **Empowering Technology toolbar** shown on your desktop.
- From the Start menu, go to **(All) Programs > Acer Empowering Technology > Acer ePresentation Management**.



This will open the Acer ePresentation Management main page.

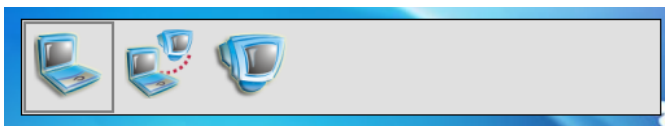


Acer ePresentation Management Main Page

The two resolutions (800 x 600 pixels, 1024 x 768 pixels) are listed on this page. Click on either one to set to that resolution. Closing Acer ePresentation Management will return your notebook's screen to its original resolution.

Fn-F5 Hotkey

Use the Fn-F5 hotkey at any time to open Acer ePresentation Management's built-in display switcher.



The three settings are:

- 1 Notebook LCD display only
- 2 Notebook LCD and external display
- 3 External display only