

Acer eSettings Management

Acer eSettings Management allows you to view your system information and configuration, set passwords to improve security, and set boot options.

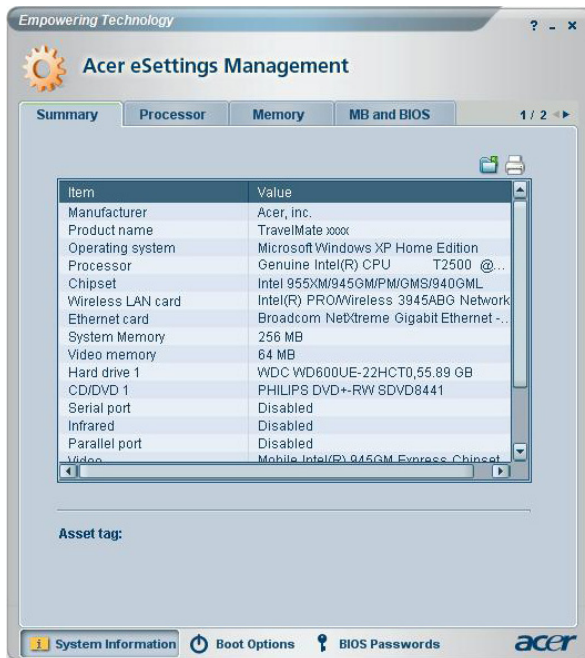
Using Acer eSettings Management

To launch Acer eSettings Management:

- Click on the Acer eSettings Management icon in the **Empowering Technology toolbar** shown on your desktop.
- From the Start menu, go to **(All) Programs > Acer Empowering Technology > Acer eSettings Management**.





This will open the Acer eSettings Management main page.



Acer eSettings Management Main Page

From the main page, you can view different types of **System Information**:

- Summary
- Processor
- Memory
- MB and BIOS
- Video
- Audio
- Network

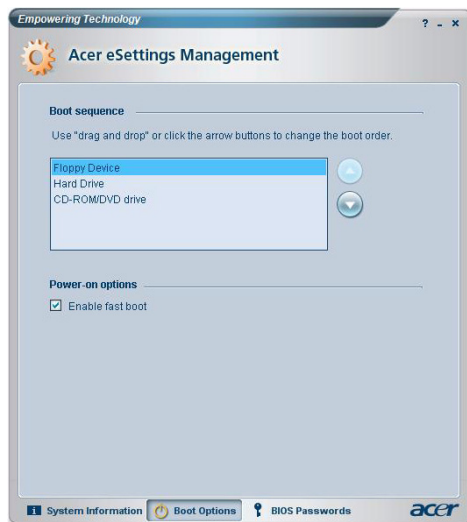
Click the left and right arrows near the top-right side of the page to view all the system information tabs. Click the  icon to save and the  icon to print information for the selected tab.

By clicking the icons at the bottom of the page, you can also:

- Set your **Boot Options**.
- Create and remove **BIOS passwords**.

Boot Options

Select this page to change your computer's boot sequence and power-on options.



BIOS Passwords

Use this page to set BIOS supervisor and user passwords. The supervisor password restricts access to your PC's BIOS settings, and the user password restrict access to your PC.

