

Acer eLock Management

Acer eLock Management offers you a convenient means of preventing your data from being copied to external storage media, such as an optical disk, flash drive or floppy disk.

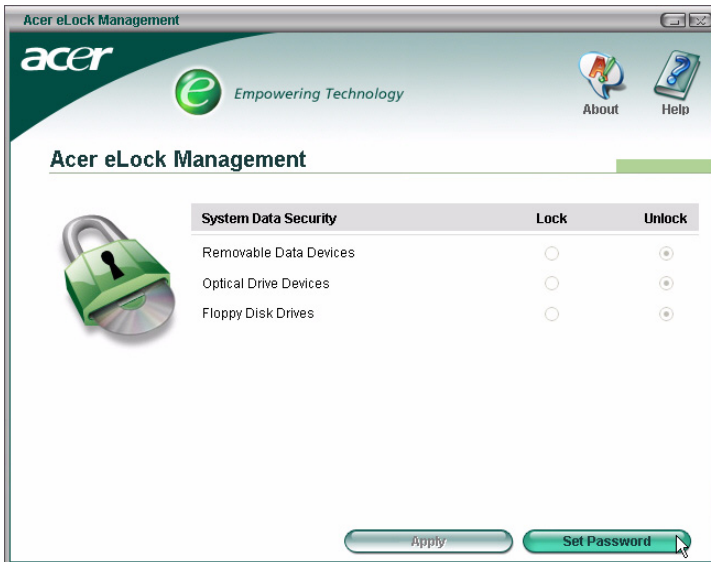
Using Acer eLock Management

You can launch Acer eLock Management in a number of ways:

- From the Start menu, go to **Start > (All) Programs > Empowering Technology > Acer eLock Management**.
- By clicking on the **Empowering Technology** icon from your desktop, or pressing the < *e* > key to launch the **Empowering Technology** user interface. Select the **Acer eLock Management** icon.



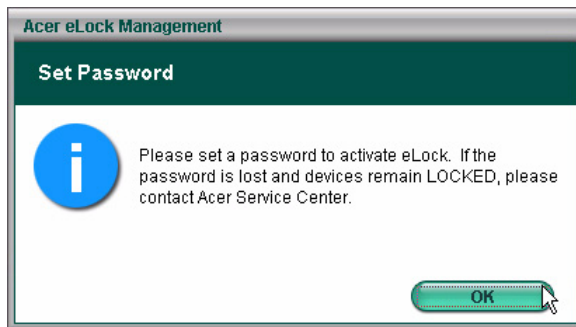
This will open the Acer eLock Management main page.



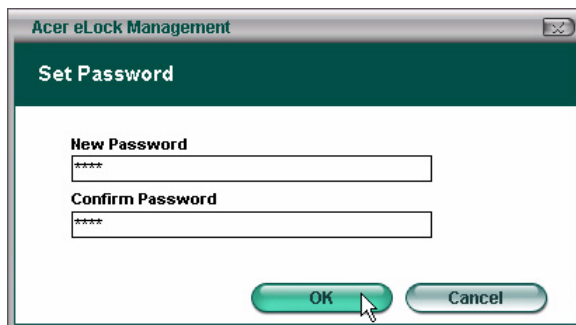
Listed on the main page are the devices you have the option of locking. Before you can lock any devices, you need to define a password for Acer eLock Management. Do this by clicking the **Set Password** button in the lower right-hand corner of the screen.

To set a password

Step 1: Click OK



Step 2: Enter password



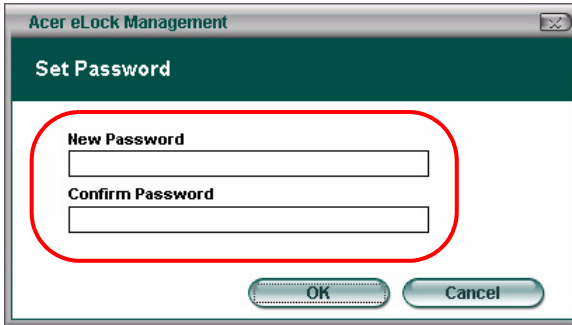
Once the password is set, the button changes to **Change Password** and you can change the password at any time by clicking the button, and entering the existing password. You will then be asked to enter the new password twice.



.....

Note: The password needs to be between four and eight alphanumeric characters. If you forget your password, you will need to take your notebook PC to an Acer Customer Service Center.

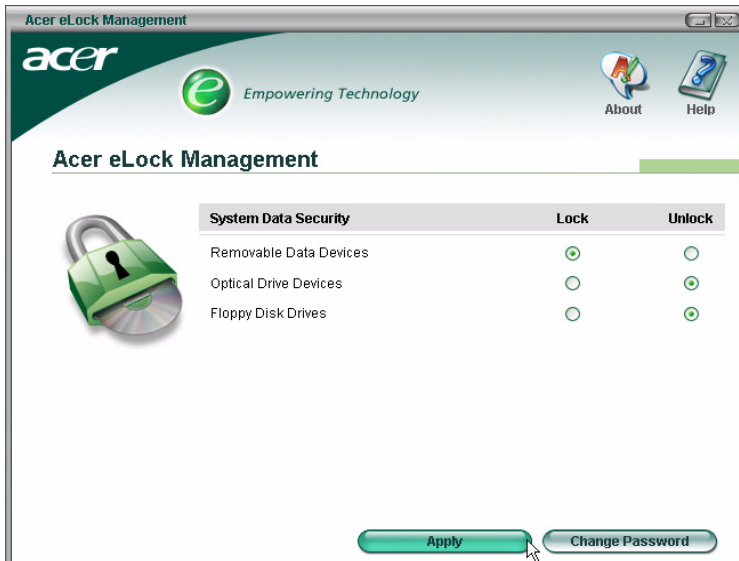
You can reset the system to its default settings (all devices unlocked) by removing the password (leave the password fields blank when changing the password).



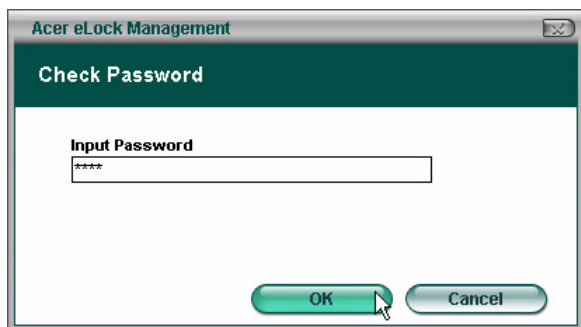
Locking/unlocking a device

You can lock/unlock USB storage devices, the (USB) FDD, or optical drive.

Step 1: Lock the drives by selecting the appropriate Lock/Unlock radio button, and clicking **Apply**.



Step 2: You will be asked to enter the password before the device is locked/unlocked.



Locked devices

Locked devices are indicated with a different icon.

Devices with Removable Storage



DVD/CD-RW Drive (E:)



Removable Disk (F:)