

Acer eNet Management

Acer eNet Management offers you a simple-to-use tool to manage your network connections. You can set up different profiles for connecting to a network from a variety of different locations, via wired or wireless connections.

Acer eNet Management detects which network environment you're in, and automatically switches to the appropriate profile. Since the profiles also store information such as the printer settings for each environment, Acer eNet Management will set the correct printer default for the selected profile.

Using Acer eNet Management

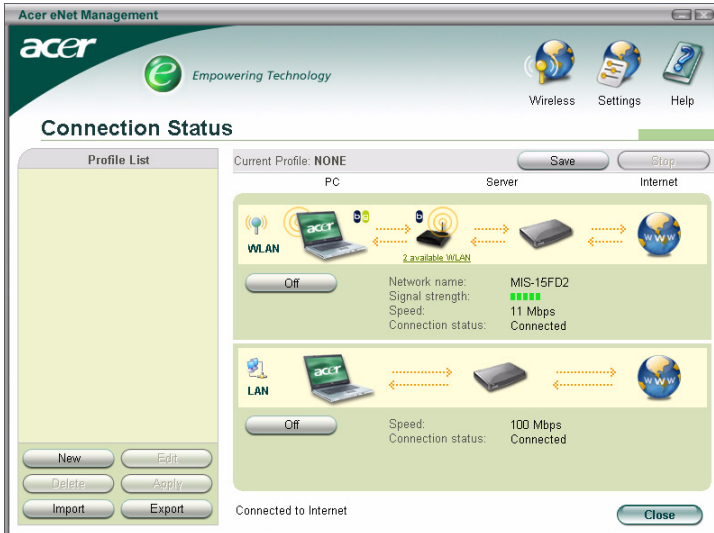
You can launch Acer eNet Management in a number of ways:

- From the Start menu, go to **Start > (All) Programs > Empowering Technology > Acer eNet Management**.
- By clicking on the **Empowering Technology** icon from your desktop, or pressing the < *e* > key to launch the **Empowering Technology** user interface. Select the **Acer eNet Management** icon.



Acer eNet Management

This will open the Acer eNet Management main page.

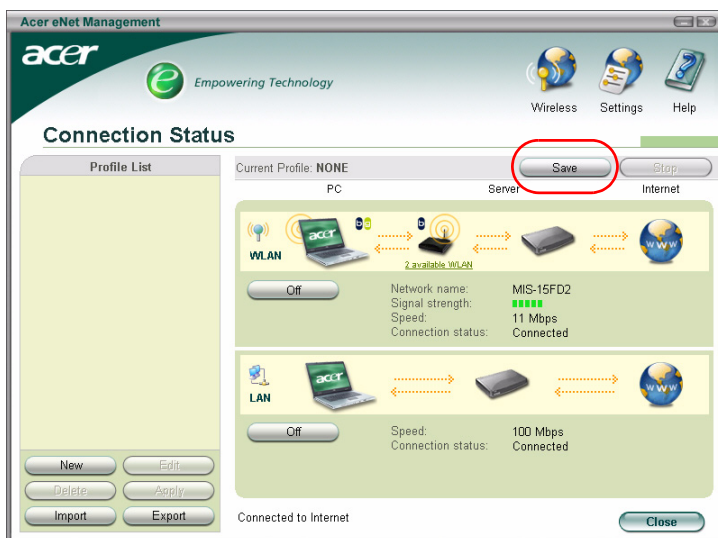


Acer eNet Management Main Page

The Acer eNet Management main page shows you the current connection status, as well as a list of the available profiles. There are also various profile management buttons that allow you to create a new profile, edit a profile, delete a profile, apply a profile, or import or export a profile.

Saving the current connection

If you're connected to a network, and wish to save your settings to a profile, click the **Save** button above the connection status information.



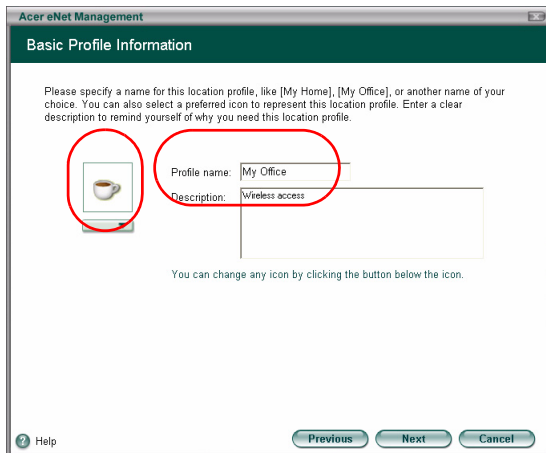
Setting up a new profile

If you wish to manually set up a profile (for example, for a location you know you will visit in the future):

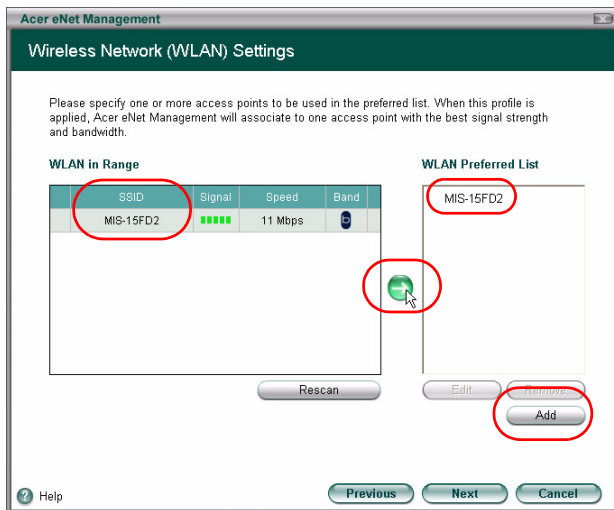
Step 1: Click **New** to open the **New Profile Wizard**. This easy-to-understand wizard will take you through setting up a new profile.



Step 2: You will need to enter a name for the profile, and a short description of the profile. You can also select a descriptive icon from the drop-down list.



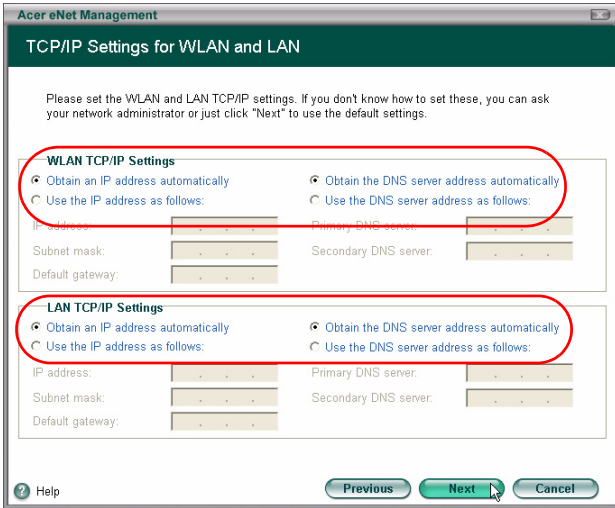
Step 3-1: The next screen will show you all the available networks.



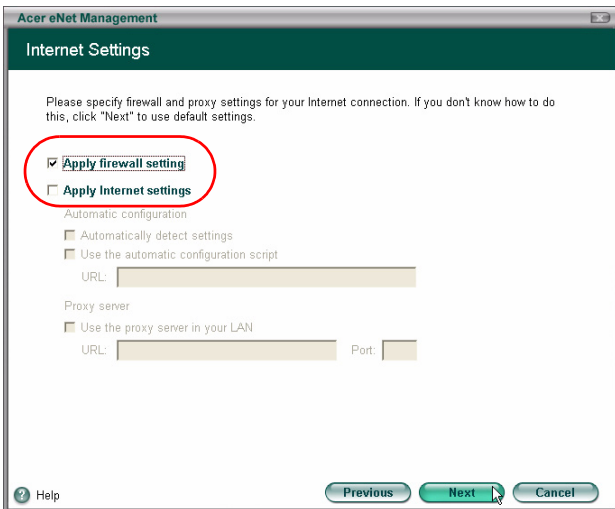
Step 3-2: If the network you wish to connect to is not listed, click **Add** and manually enter the SSID for the network.



Step 4: The next window will ask you to enter the IP and DNS information for the network, or you can opt to obtain this information automatically.



Step 5: Select which firewall and Internet settings you need.



Step 6: Enter PPPoE settings if necessary.

Acer eNet Management

PPPoE/VPN Account Settings

Please specify PPPoE settings if you are at home and your ISP account needs a PPPoE connection. If you need to access a remote network, please specify the VPN settings. If you don't know how to set the PPPoE or VPN, you can click "Next" to use default settings.

Apply PPPoE settings

Manually set up a PPPoE connection Use the 3rd party PPPoE program

Phonebook name	ISP name	Location:

Add Edit Remove

Apply VPN settings

Manually set up a VPN connection Use the 3rd party VPN program

Phonebook name	Server address	Location:

Add Edit Remove

Help Previous **Next** Cancel

Step 7: Select which folders you wish to share using this profile.

Acer eNet Management

Shared Folder Settings

Please specify one or more shared folders. When you apply this profile, these folders will be shared with your friends.

Apply shared folder settings

Folder tree

C: [ACER]

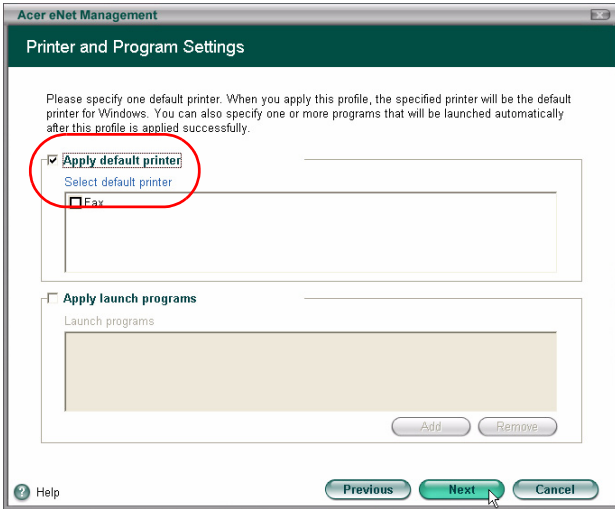
- C:\
 - Acer
 - BOOK
 - Documents and Settings
 - dotnetfx
 - i386
 - Program Files
 - SYSINFO
 - VALUEADD
 - WINDOWS

Shared folders

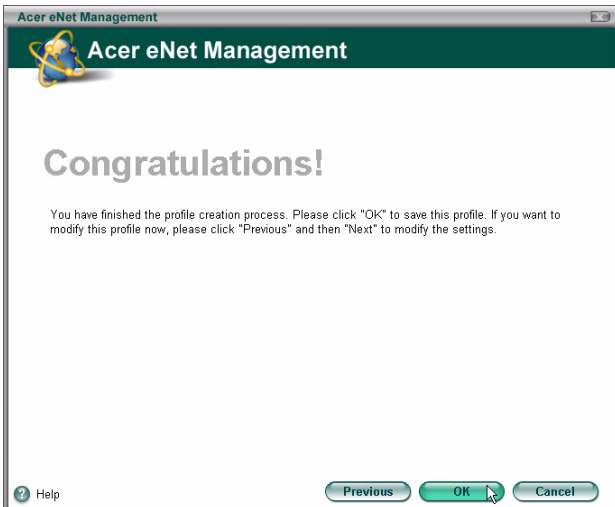
Remove

Help Previous **Next** Cancel

Step 8: Select the default printer, and any programs you wish to launch automatically when you activate this profile.

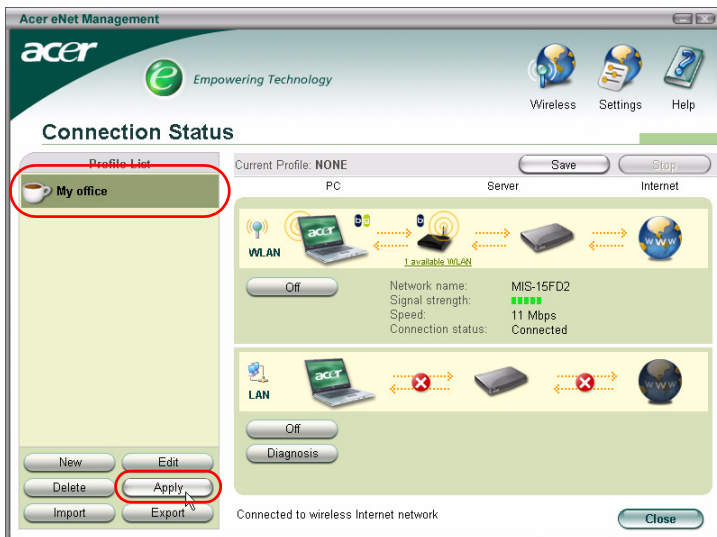


Step 9: Save the profile.



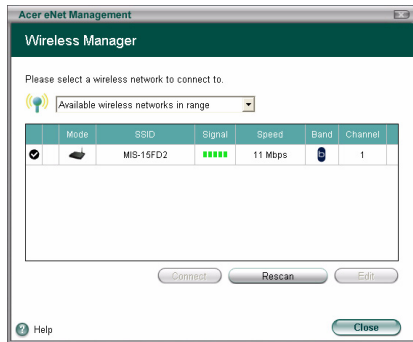
Manually activate a profile

To manually activate a profile, simply select the desired profile in the profile list, and click **Apply**.



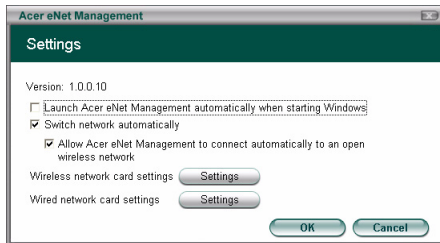
The Wireless Manager

Click the **Wireless** button in the upper right-hand corner of the main page to open the Wireless Manager.



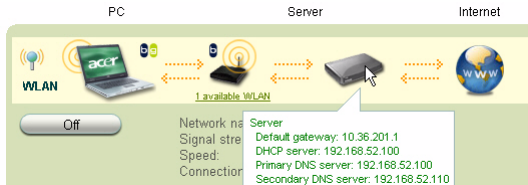
Changing the Settings

Clicking on the **Settings** button will open the Settings dialog box. Here you can choose to start Acer eNet Management when Windows® starts, switch networks automatically, and change network card settings.



Viewing Connection Information

When you're connected to a network, you can view the connection information from the main page by moving the cursor over the icons for the access point, server or computer. This will open a pop-up message with detailed connection information.



Diagnosing a Network Connection

If an adapter is not connected, there is a button under the computer icon labeled **Diagnosis**. Click this button to view what could be causing the adapter to be disconnected, and suggested remedies.

