

# Acer ePresentation Management

Acer ePresentation Management offers you a quick and easy way of setting your notebook PC's resolution when using a projector as an external display device.

Acer ePresentation Management has two common projector resolutions pre-defined. Selecting either one will set the monitor and external display resolution.

## Using Acer ePresentation Management

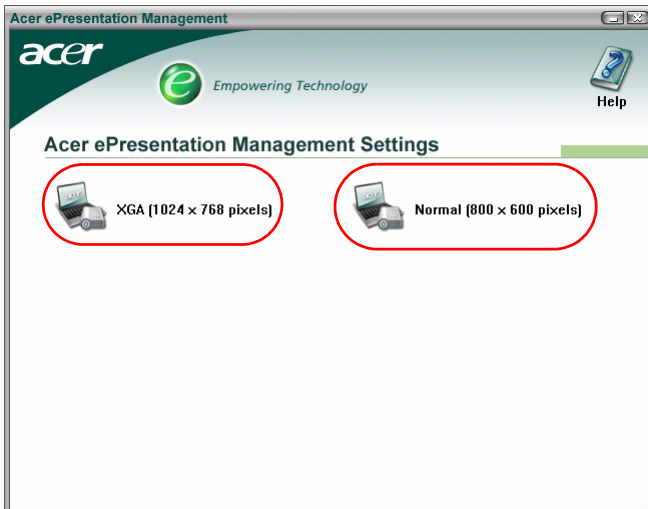
You can launch Acer ePresentation Management in a number of ways:

- From the Start menu, go to **Start > (All) Programs > Empowering Technology > Acer ePresentation Management**.
- By clicking on the **Empowering Technology** icon from your desktop, or pressing the < *e* > key to launch the **Empowering Technology** user interface. Select the **Acer ePresentation Management** icon.



Acer ePresentation Management

This will open the Acer ePresentation Management main page.



## Acer ePresentation Management Main Page

The two resolutions (600 x 800 pixels, and 1024 x 768 pixels) are listed on this page. Click on either one to set to that resolution. Closing Acer ePresentation Management will return your notebook's screen to its original resolution.