

# Acer eSettings Management

Acer eSettings Management allows you to view your system information and configuration, set passwords to improve security, and set boot options.

## Using Acer eSettings Management

You can launch Acer eSettings Management in a number of ways:

- From the Start menu, go to **Start > (All) Programs > Empowering Technology > Acer eSettings Management**.
- By clicking on the **Empowering Technology** icon from your desktop, or pressing the < *e* > key to launch the **Empowering Technology** user interface. Select the **Acer eSettings Management** icon.



This will open the Acer eSettings Management main page.



## Acer eSettings Management Main Page

From the main page, you can choose to:

- Set boot up passwords and configure your SmartCard (if installed).
- Set your boot up options and BIOS settings.
- View system information.

## Security

Select this option to set user and supervisor passwords during boot up.

Acer eSettings Management

### Set Security Settings

Set or modify system passwords and SmartCard settings

**Supervisor Password**  
The supervisor password prevents unauthorized access to your laptop computer's BIOS settings.

Enable [Set New Password](#)

New

Confirm

Apply Cancel

**User Password**  
The user password prevents unauthorized access to the notebook.

Enable [Set New Password](#)

SmartCard

### Supervisor password

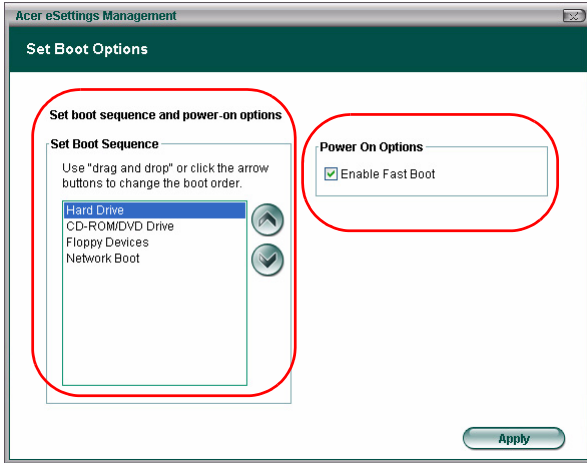
If you check the **Enable** box, a password is required before entering BIOS. Click **Set New Password** to define the password. If you forget your password, you will need to take your computer to an Acer Customer Service Center.

### User password

If you set a user password, you will need to enter the correct password before your computer will boot up.

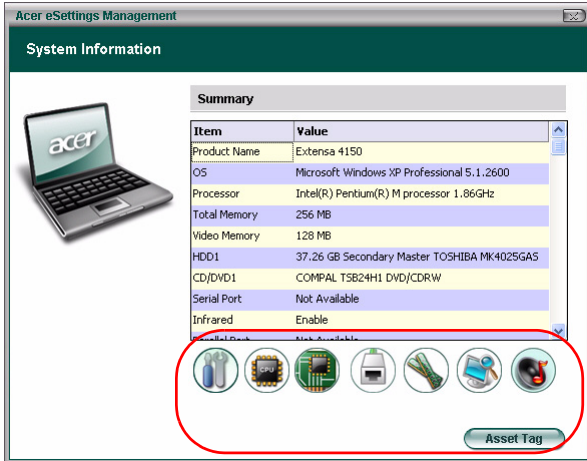
## Boot Options

From this option, you can select the primary boot drive (ODD, HDD, FDD or network) and enable or disable Fast Boot.


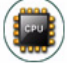







## System Information

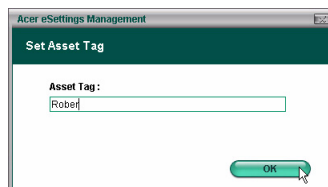
Select this option to view comprehensive system information. .



Click the icons below the information area to view relevant information.

-  Summary
-  Processor
-  Motherboard and BIOS
-  Network
-  Memory
-  Video
-  Audio

Click "**Asset Tag**" to set a unique identifier for your computer. Once set, the asset tag cannot be changed or removed and the Asset Tag icon will disappear.



Acer eSettings Management

Set Asset Tag

Asset Tag:  
Rober

OK