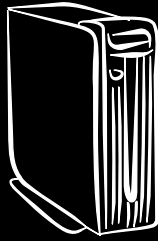


# Altos SA50 Handbook



Copyright © 2001 Acer Incorporated  
All Rights Reserved.

Altos SA50  
Handbook

Changes may be made periodically to the information in this publication without obligation to notify any person of such revision or changes. Such changes will be incorporated in new editions of this manual or supplementary documents and publications. This company makes no representations or warranties, either expressed or implied, with respect to the contents hereof and specifically disclaims the implied warranties of merchantability or fitness for a particular purpose.

Record the model number, serial number, purchase date, and place of purchase information in the space provided below. The serial number and model number are recorded on the label affixed to your computer. All correspondence concerning your unit should include the serial number, model number, and purchase information.

No part of this publication may be reproduced, stored in a retrieval system, or transmitted, in any form or by any means, electronic, mechanical, photocopy, recording, or otherwise, without the prior written permission of Acer Incorporated.

Acer and the Acer Logo are registered trademarks of Acer Inc. Other company's product names or trademarks are used herein for identification purposes only and belong to their respective companies.



Welcome to the SA50	1
What's the purpose of the SA50 User Guide?	1
What you need to know	1
Documentation Conventions	1
What operating system is installed on the SA50?	2
Linux development	3
What's included in the Altos SA50?	3
The Altos SA50	3
Learning how to use the SA50	4
Altos SA50 documentation set	4
About Acer Inc.	4
Default username and password	4
Setting up the Altos SA50	6
A graphical, easy-to-follow installation process	6
Installation scenarios	6
Understanding the client computer requirements	6
Understanding the network requirements (including the web)	7
Understanding the Altos SA50	8
Understanding the Altos SA50 installation steps	9
Setting up your Client	9
To install your network card into your computer	9
Setting up your hub	10
Setting up your Altos SA50	10
LCD Monitor	11
Verify the connection between the client and your Altos SA50	14
Configuring your SA50 from the client	19
Using the service pack	31
Backup	37
The SA50	38
The client used to access the SA50	38
Backup	41
Disk Mirroring	46
Restoring Data	51
Updating the Firmware	57
Using the Altos SA50 System Administration Manager	65
Welcome to Tom & Jerry's Toys	65
Creating a new user account	66
Editing an existing user account	67
Deleteing a user account	68
File sharing	68
Creating a new shared folder	69

# Contents

Modifying an existing shared folder	70
Uploading documents to your SA50	71
Viewing the shared folder	71
Setting the System Clock	72
Managing the SA50 system	73
You're Altos SA50 and the role of the system administrator	73
Click Connection	73
Click Modem Internet Connection	73
Back to Tom & Jerry Toys	74
Connect to the Internet via a client	76
Connecting with an ADSL or Cable line	82
Other Internet Connection	83
Connect to the Internet via a client	84
Setting up and verifying your Local Area Network	86
Local Network Connection	86
Confirming client connectivity	87
Setting up the Printer	88
Connect to your shared printer	91
Setting up Email	93
Setting up a Web Server	95
Uploading your web site to the SA50	97
Connecting to your Personal Web Server	98
Setting up FTP	98
Connecting to the FTP Server	100
Uploading in MS-DOS Prompt on the client	101
Downloading in MS-DOS Prompt on the client	101
Setting up Proxy	102
Setting up DNS	103
System Log-Viewing events on your server	105
Refreshing the system log	105
Printing the System Log	105
Clearing the system log	105
Services	107
Services explained	107
Help	108
Help explained	108
Using help	108
Help contents	108
Network help	109
Product specifications	110
Performance	110
Connectivity	110
Software services	110
Taking care of your server	112

Important tips	112
Cleaning and servicing	112
When to contact a service technician	112
Notices	113



# Welcome to the SA50

Thank you for choosing the SA50 server appliance from Acer. The SA50 is a powerful yet easy-to-use server appliance that takes advantage of the latest server enhancements. Whether you're a novice or a professional the SA50 is easy to install, learn, and use.

With the SA50, you can be productive, use the Internet, and configure your installation to meet your specific needs while knowing that you are using the most secure, flexible, powerful, and stable operating system available.

Please take a few minutes to review the rest of this section - it provides information about how you can learn to maximize the SA50's capabilities.

## What's the purpose of the SA50 User Guide?

The SA50 User Guide can help you get up and running quickly. It explains the features of the SA50 and the associated applications, provides step-by-step instructions for installing your SA50 and performing the most common tasks, and describes the SA50's tools and functions.

The SA50 User Guide is designed for both new and experienced computer users. If you're new to computers and operating systems, you can use this user guide as a foundation to your learning. If you're familiar with computers, you can use this guide to learn about the tools available to you, and how to use them. If you are an experienced user, you can use this user guide to learn more about what the SA50 offers you.


## What you need to know

This user guide assumes that you know the basics about computing. It also assumes you know how to point, click and drag with a mouse and use a keyboard.

## Documentation Conventions

Before you start using the SA50 User Guide and the online Help, it's important to understand the documentation conventions. By reviewing, these conventions, you will be able to use the documentation more effectively.




The following are conventions related to using the mouse.

When yo see this...	Do this...
Click 	Press the primary mouse button (usually the left mouse button).
Double-click	Quickly press the primary mouse button twice
Right-click	Press the secondary mouse button (usually the right mouse button)

The following are conventions related to using the keyboard.

When yo see this...	Do this...
Press Enter	Press the Enter key on your keyboard
CTRL + SHIFT	Press the Control key and the Shift key at the same time
Right-click	Press the secondary mouse button (usually the right mouse button)

The following are conventions are used in this user guide.

When yo see this...	Do this...
	A note in the user guide
	A tip in the user guide
	A warning in the user guide

## What operating system is installed on the SA50?

Under the hood of the System Administration Manager, Linux is quietly doing its work. Linux is a Unix-like operating system. Technically, the term



"Linux" refers only to the kernel or core operating system, but it has come to describe the complete operating system and suite of applications.

## Linux development

In the 1980's, Andrew Tanenbaum, a Dutch professor of computer science and a specialist in designing operating systems, wrote an operating system called MINIX to help his students learn the complexities of UNIX. In the spring of 1991, a student at the University of Helsinki, Linus Torvalds, began experimenting with ways to increase the functionality of MINIX. Torvalds' experimentation became the Linux Kernel. He placed the source code in the public domain so developers around the world could look at, modify, and add to his initial developments. Torvalds became a contact to which developers could mail changes, enhancements and additional drivers. At the same time Torvalds was adding core functionality to his original source code.

This collaboration resulted in version 1.0 of the Linux kernel, which was released in 1994. Since the initial release, version 2.0, which is used most widely today, and version 2.2, have also been released. With such spontaneous developments from a worldwide team of developers, the Linux kernel has become extremely robust since its initial development and is often considered more robust than many commercial operating systems.

The SA50 is currently using Linux kernel version 2.2.14, the most recent version.

## What's included in the Altos SA50?

The following section describes some of the utilities included with the Acer Altos SA50:

### The Altos SA50

Before you unpack, make sure that you have enough space to set up your server. Carefully unpack the carton and remove the contents. If any of the following items are missing or damaged, contact your Acer vendor immediately:

- Altos SA50 server appliance
- Power cable
- Getting Started Poster

- Users Manual
- Installation Floppy Diskette or CD-ROM

## Learning how to use the SA50

The Altos SA50 includes online and paper documentation to help you learn and use the server efficiently.

### Altos SA50 documentation set

**Online Help:** The Online Help enables you to quickly retrieve all the information you need, and return to your work. "Help" is displayed in your web browser. You can browse through "Help" by using the table of contents, or index. You can also print specific topics from the online "Help".

**The Altos SA50 Handbook:** This book explains the features of the Altos SA50 and the associated applications, and provides step-by-step instructions for installing and using the Altos SA50.

**The Altos SA50 Poster:** This poster shows in graphical representation how to setup the SA50.

## About Acer Inc.

Established in 1976, Acer is the world's third-largest PC manufacturer, offering broad range of PC products from industry-leading high-end PC servers and multimedia desktop computers, to notebooks, computer peripherals and components. Acer is also a leading Internet-enabler, providing Internet component technologies, devices and services. These include end-to-end solutions, mobile phones, plasma displays, TFT screens, projectors, wireless communications, and e-corp. solutions. The Acer Group employs more than 35,000 people in 193 enterprises spanning 42 countries worldwide, supporting dealers and distributors in over 100 countries. Acer Group revenues in 1999 were US\$8.5 billion. For more information about the Acer Group, please visit our website at [www.global.acer.com](http://www.global.acer.com)

## Default username and password

Before setting up your SA50, you need to be able to access it. Factory settings require that users or the administrator use a factory default

username and password. To create a universal setup Acer has set the username and Password as follows:

**User Name:** administrator

**Password:** admin

## ▶ Setting up the Altos SA50

### A graphical, easy-to-follow installation process

Acer makes it easy to install the Altos SA50. Previously, installing servers has been a time consuming and difficult task for inexperienced computer users. Acer has a wizard that uses graphical dialogue boxes to guide you through installation and configuration of the Altos SA50. Each dialogue box provides information about the procedure and available options, and gives you instructions that guide you to the next step of the installation.

### Installation scenarios

There are 3 typical installation scenarios for the Altos SA50.

- Setting up the client computer. It will be used to install and run the SA50.
- Setting up a network, so users in your company can communicate effectively.
- Setting up the Altos SA50.
- Connecting your client computer and the Altos SA50 to the network



.....

**Note:** Please review all the information in this section of the documentation before installing and setting up the Altos SA50. By reviewing this section, you can be more prepared to respond to installation decisions and questions.

### Understanding the client computer requirements

Please ensure your client computer meets the following requirements before installing and setting up the Altos SA50.

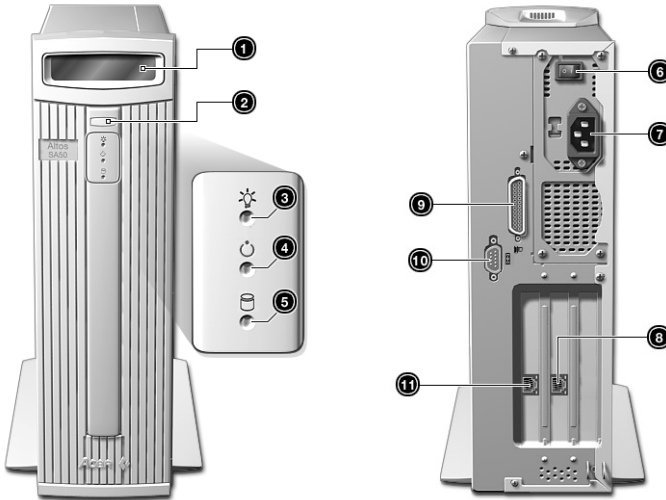
- Pentium processor or high (AMD will do)
- 32MB of RAM or higher is recommended (64MB is the standard)
- Adequate unallocated space available on your hard disk. The amount of space depends on your machine.
- CD-ROM drive (preferably bootable)
- 3.5" floppy disk drive (required if your CD-ROM is not bootable)

- PCI-type VGA or Super VGA video card (2MB) (AGP will also do)
- VGA or higher-resolution Monitor
- Mouse or other pointing device
- Keyboard
- A network card (preferably 10/100 Fast Ethernet Dual Speed Card)
- Windows 95/98/2000 operating system already installed

## Understanding the network requirements (including the web)

- A Dual Speed hub with sufficient ports to support the number of clients on your network.
- Category 5 UTP cable to connect all your clients to the hub
- Category 5 UTP cable to connect your Altos SA50 to the hub
- A contract with an ISP for dial-up connections. (Optional)
- An ADSL (Leased line) or a cable modem from your ISP, telephone company or cable company.

## Understanding the Altos SA50



No.	Item	Description
1	LCD screen	Indicates the boot status as well as any BIOS checkpoint errors encountered upon server installation
2	Power button	Turns the server on/off (works in conjunction with the power switch)
3	Power LED	Lights up when the server is running
4	Power down LED	Lights up when the server is off
5	HDD LED	Lights up when the hard disk is being accessed
6	Power switch	Powers the server on and off
7	Power cable connector	Plug one end of the power cable into the socket
8	To Local Area Network	Plug one end of a 10/100 Base TX network cable (Category 5 UTP cable) for your local area network

No.	Item	Description
9	Parallel port	Plug the printer cable into this port
10	Serial port	Plug an external modem into this port
11	To High Speed Internet Connection	Plug one end of a 10/100 Base-TX network cable (Category 5 UTP cable) for leased line connection (e.g., cable modem, ADSL, ISDN)

## Understanding the Altos SA50 installation steps

The Configuration Utility sets up your server by guiding you through the installation steps. You can navigate the installation steps if you want to change the settings that you specify.

When yo see this...	Configuration utility...
Next	Guides you to the next installation step
Back	Guides you to the next installation step
Finish	Accept the installation settings that you have specified
Cancel	Cancels the installation settings that you have specified

## Setting up your Client

Most company computers are already outfitted with Windows® 95/98/NT Workstation or Windows® 2000, so it is not necessary to go over the installation process for these operating systems. But we will cover installing the network card into the client computer and making sure the client is network enabled. If you have a network card already installed on your PC jump to step 7.

To install your network card into your computer

1. Insert the Network Card into a PCI slot on your client computer.
2. Boot up your PC. Windows® should be able to detect your card and begin the installation process.

3. Follow the Windows® installation wizard and insert the network installation floppy or CD-ROM that your vendor supplied when prompted.
4. Browse through the floppy or CD until you find the drivers for the network card and follow the installation process.
5. When finished, you will be prompted to restart your computer.
6. Restart and right-click My Computer.
7. Select Properties, click Device Manager.
8. Double-click Network Adapters, double-click on your network card, and click Properties.
9. Under Device Status you should see "This device is working properly".
10. Check to see if your network card is working, by clicking Start, Programs, MS-DOS Prompt.
11. Type "ping 127.0.0.1". If you get a reply then your card is working

## Setting up your hub

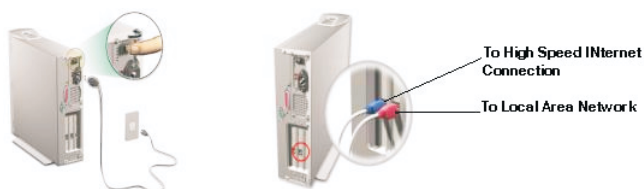
1. Plug the hub adapter into the wall socket and into the hub.
2. Power it up. You will notice the light go on.
3. Plug in the other end of your Category 5 UTP cable from your client into a port at the rear of your hub. A light will flash in the front to show which port you have plugged it into (once you have powered on the machine).
4. Plug in the other end of your Category 5 UTP cable from your Altos SA50 into a port at the rear of your hub. A light will flash in the front to show which port you have plugged it into (once you have powered on the machine).

## Setting up your Altos SA50

1. Attach the power cable to the power cable connector located at the back of the server.
2. Insert the other end of the power cable into the wall socket.
3. Connect the server to the hub by inserting one end of the network cable into the "To Local Area Network" port and the other end into a port on the hub.



4. (Optional) Connect the server to the Internet by plugging, one end of another network cable to the "To High Speed Internet Connection" port and the other end to the ADSL or cable modem.
5. (Optional) Connect the server to the Internet by plugging an external modem to the COM port at the rear of the SA50, connecting a phone line to the modem and plugging it into the telephone socket in the wall.
6. Power up the server by clicking the power switch located at the back. Boot up the server by pressing the Power button located in the front.
7. Your server will now go through the boot process. You can watch the process on the **LCD** screen.



## LCD Monitor

The LCD monitor will display the setup procedure once you turn the SA50 on. Unfortunately, this procedure takes place at lightning speed. Here is a detailed look at what happens when you turn on your SA50.

No.	LCD message	Description
1	Booting up ...	After the BIOS is finished its POST procedures, the OS starts to load
2	Checking the Hard Disk	Preparing to mount the OS on the hard disk. The time taken (duration) depends on the size of your HDD
3	Running Scandisk (e2fsck)	Scanning the hard disk after an incomplete shutdown
4	Loading the Adv Pwr Mngr	Starting the APM daemon

No.	LCD message	Description
5	Loading Ethernet Settings	The OS is setting up the Ethernet controller including the TCP/IP and NAT protocols
6	Loading Email Settings	The OS is loading the Email Server
7	192.168.3.1	It is the Local IP address you set
8	Domain Name	It is the domain name of your SA50

The following messages are shown when creating/formatting a hard disk.

No.	LCD message	Description
1	IDE1 HDDnot found!	It's an error message. It means that the SA50 can't find the master hard disk on IDE1
2	Formatting the1st partition	It is formatting the first hard disk partition, which stores general users' files
3	Formatting the2nd partition	It is formatting the second hard disk partition, which stores users' emails
4	Formatting the3rd partition	It is formatting the third hard disk partition, which stores users' web pages
5	Preparing harddisk files	It is creating the default directories and files in the hard disk

The following messages are shown when creating/formatting RAID.

No.	LCD message	Description
1	IDE1 HDD not found!	It's an error message. It means that the SA50 can't find the master hard disk on IDE1
2	Disk Mirroring Configuration	It is setting the RAID configuration. Time depends on hard disk size
3	Formatting the1st partition	It is formatting the first RAID partition, which stores general users' files

No.	LCD message	Description
4	Formatting the 2nd partition	It is formatting the second RAID partition, which stores users' emails
5	Formatting the 3rd partition	It is formatting the third RAID partition, which stores users' web pages
6	Preparing hard disk files	It is creating default files and directories for RAID
7	Configuring RAID	Checking RAID progress status
8	Repairing RAID	This procedure repairs RAID after an incomplete shutdown

The following messages show the status when a modem is dialing out.

No.	LCD message	Description
1	Connecting...	The modem is trying to connect to the ISP
2	Line's Busy	The line is busy
3	No connection Signal	The line is ringing
4	Busy (Engaged)	The line is busy or transmission problems
5	Disconnecting ...	Disconnecting from the server after being idle for ...(minutes)
6	Connected - Login verified	The connection is verified
7	Login failure	The server is disconnecting from the ISP because of an incorrect username or password

The following messages show when RAID fails.

No.	LCD message	Description
1	RAID erroron IDE1	RAID-1 fails on IDE1 because of incompatibilities

No.	LCD message	Description
2	RAID error on IDE2	RAID-1 fails on IDE2 because of incompatibilities

The following messages show the status when using a cable modem to connect to an ISP.

No.	LCD message	Description
1	Retrieving anIP Address	Getting an IP Address from the DHCP server
2	Failed to retrieve an IP	The DHCP server timed out
3	Assigned IPAddress	The DHCP server assigned the correct IP Address
4	Internet IP:xxx.xxx.xxx.xxx	This IP Address is static

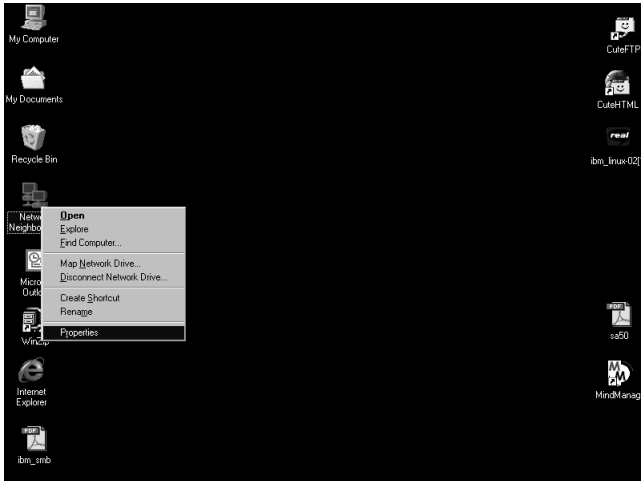
## Verify the connection between the client and your Altos SA50



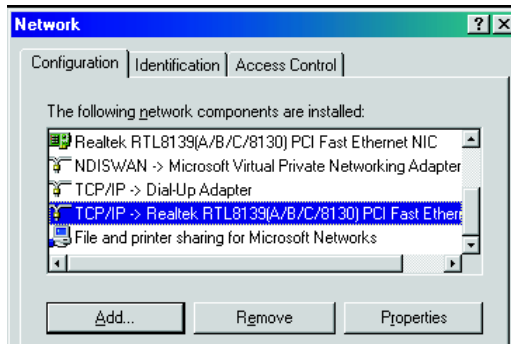
**Note:** It is vital you check to see if you have "Obtain an IP address automatically" enabled on your PC before you begin to verify your connection. The SA50 acts like a DHCP server, which will automatically assign your PC an IP address. In order to do this, follow these steps.

1. Right-click "Network Neighborhood" on your desktop.

2. Click **Properties**.



3. Under "Configuration" browse down the drop down list till you see **TCP/IP on your network card**.



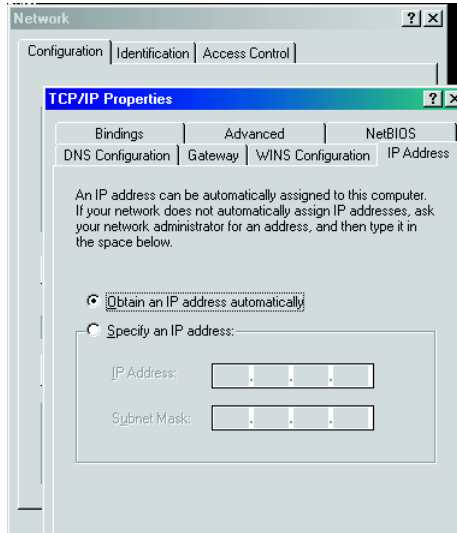
4. Then click **Properties**.



.....

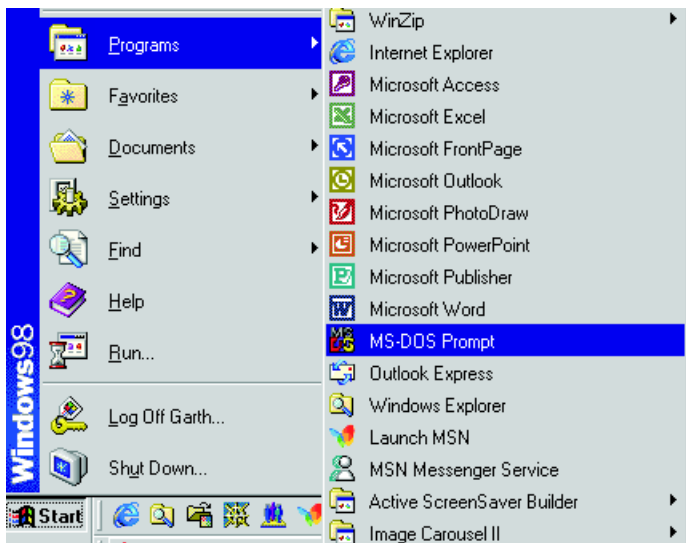
**Note:** Do not click Properties when you highlight your network card. This will produce the wrong information.

5. Under **IP Address** make sure the "**Obtain an IP address automatically**" is checked.



This means when you reboot your PC, the SA50 will automatically assign your client an IP address.

6. Click **Start, Programs, MS-DOS Prompt**.



6. Then type in "**ipconfig**".

```

Microsoft(R) Windows 98
(C)Copyright Microsoft Corp 1981-1999.

C:\WINDOWS>ipconfig

Windows 98 IP Configuration

0 Ethernet adapter :

    IP Address. . . . . : 0.0.0.0
    Subnet Mask . . . . . : 0.0.0.0
    Default Gateway . . . . . :

1 Ethernet adapter :

    IP Address. . . . . : 192.168.3.2
    Subnet Mask . . . . . : 255.255.255.0
    Default Gateway . . . . . : 192.168.3.1

C:\WINDOWS>
  
```

7. You will get a screen that displays your new **IP address, Subnet Mask** and **Gateway**. Check to see that you have followed all the above instructions.



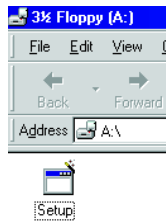
-----

**Note:** From this point we assume that everything is running smoothly and that you have got a reply signal from your SA50. You are now ready to set up the "Configuration Utility" for your SA50. If you have not reached this point, please go over the steps again. Note that you cannot do this unless the client and SA50 are in the same workgroup.



## ► Configuring your SA50 from the client

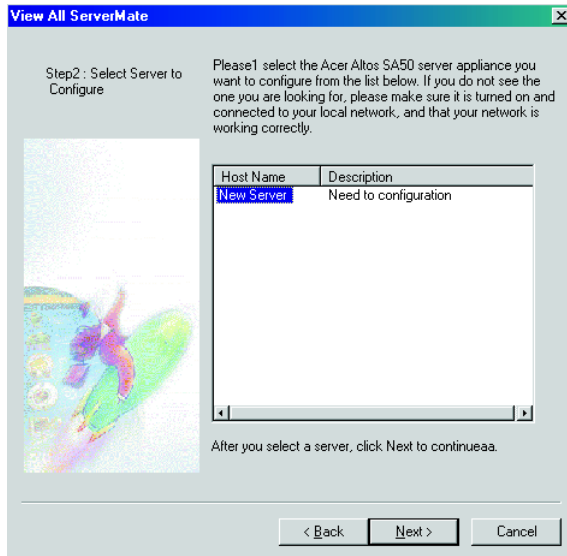
1. Insert the Altos SA50 Installation floppy into the floppy disk drive. Make sure that Windows® has already started.
2. Copy the contents of Disk 1 and Disk 2 into a windows directory, i.e., "SA50".
3. After you finish copying, double-click on the Setup file located in that directory.



4. The installation utility program displays. Click the **Next** button to proceed with the setup.

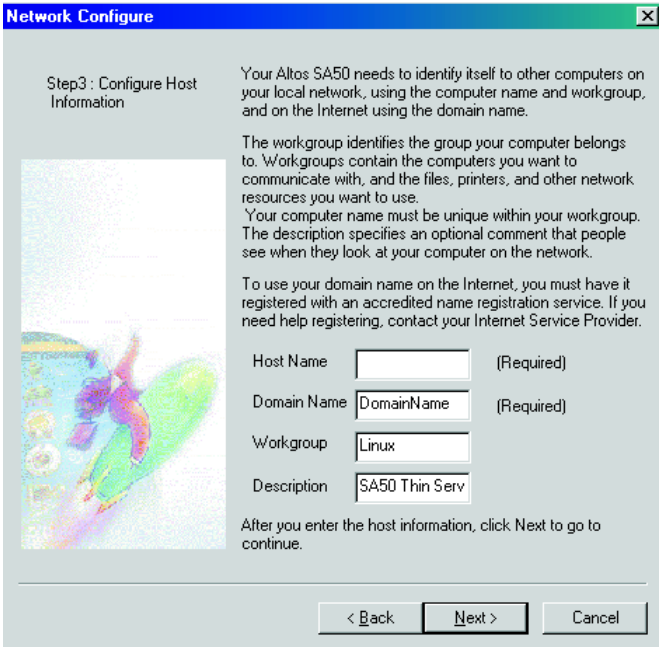


5. "Select Server to Configure" pops up.



6. Click the "New Server" and then click "Next".  
The next screen is "Configuring Host Information". Here you type in

your important information.



**Network Configure** [X]

Step3 : Configure Host Information

Your Altos SA50 needs to identify itself to other computers on your local network, using the computer name and workgroup, and on the Internet using the domain name.

The workgroup identifies the group your computer belongs to. Workgroups contain the computers you want to communicate with, and the files, printers, and other network resources you want to use.

Your computer name must be unique within your workgroup. The description specifies an optional comment that people see when they look at your computer on the network.

To use your domain name on the Internet, you must have it registered with an accredited name registration service. If you need help registering, contact your Internet Service Provider.

Host Name  (Required)

Domain Name  (Required)

Workgroup

Description

After you enter the host information, click Next to go to continue.

< Back   Next >   Cancel

7. Click in the box next to the words "Host Name". Here you can type your company name, or department name.
8. Click in the box next to the words "Domain Name".

9. In the box next to "Domain Name", type a domain name. Look at the example for details.

**Network Configure** [X]

Step3 : Configure Host Information

Your Altos SA50 needs to identify itself to other computers on your local network, using the computer name and workgroup, and on the Internet using the domain name.

The work-group identifies the group your computer belongs to. Workgroups contain the computers you want to communicate with, and the files, printers, and other network resources you want to use.

Your computer name must be unique within your workgroup. The description specifies an optional comment that people see when they look at your computer on the network.

To use your domain name on the Internet, you must have it registered with an accredited name registration service. If you need help registering, contact your Internet Service Provider.

Host Name  (Required)

Domain Name  (Required)

Workgroup

Description

After you enter the host information, click Next to go to continue.

< Back    Next >    Cancel

The following is an example of how you should configure the "Host Information":

- Host Name: SSC
- Domain Name: garth.sa50.acer.com.tw
- Workgroup: Linux-Note: This must be the same as the client that you are using to communicate with the SA50.
- Description: SA50 Thin Server

- After that the "Configure Local Network Connection" screen will pop up.

**Network Configure (Continue...)**

Step4 : Configure Local Network Connection

Your Alto SA50 needs to have an IP address to communicate with other computers on your local network. The IP address provides a unique address for your computer, so that other computers know where to send information.

The Subnet Mask, combined with the IP address, identifies which part of your local network your computer is on.

Local IP Address:  (Required)

Subnet Mask:  (Required)

Gateway:  (Required)

Dynamic Host Configuration Protocol (DHCP) allows your server to automatically assign IP address to other computers on your local network.

Enable DHCP

Starting IP Address:

Ending IP Address:

Lease Time:

After you configure your local network settings, click Next to continue.

< Back    Next >    Cancel

- Click in the box next to "Local IP Address" and type in the IP address.
- Click in the box next to go to the next box.
- Type in your "Subnet Mask". We suggest not changing the default settings, unless the administrator knows network settings). This number should be in the range of your IP address.
- Press the "Tab" key on your keyboard to go to the next box.
- Type in your "Gateway". (Supplied by the administrator) This number should be in the range of your IP address.
- Next check the box that's next to "Enable DHCP".
- Click in the box next to "Starting IP Address" and enter a number. If you are unsure of what to do follow the default settings.
- Press the "Tab" key on your keyboard to go to the next box.
- Click in the box next to "Ending IP Address" and enter a number. If you are unsure of what to do follow the default settings.
- Click in the box next to "Lease Time". "Lease Time" is the duration for which a client will hold an IP address. The default is 86400 seconds, which translates to 24 hrs. This should be sufficient time.

## 21. Click Next.

The next step is to "Provide Connection Details for your ISP account". Using a modem dial up should only check the "Connect ISP by using a modem dial up" if you are accessing the Internet infrequently. This procedure replaces a leased line, ADSL or cable connection and is much cheaper than the aforesaid but limits the user from accessing the Internet 24 hours a day. In the following few steps we assume that you are going to dial up to an ISP and not use an ADSL line. If however, you do have an ADSL or cable modem you can skip the next few steps.

1. Click in the box next to "Connect ISP by using a modem dial up".

**ISP Information** [X]

Step5 : Provide Connection Detail For Your ISP Account

Connecting to the Internet requires an account with an Internet Service Provider, or ISP (a company that provides you with an Internet connection).  
If you do not have an ISP account, or do not have the necessary information available, you can skip this section and continue to the next page. Later, you can use the web-based Server Administration Manager to fill in this information.

Connect ISP by using a modem dial up.

User Name :

Password

If you are connecting to the Internet using a modem you will need to enter the telephone number you use connect to your ISP.

Telephone Number

After you provide your ISP connection details, click Next to continue.

< Back    Next >    Cancel

2. Click in the box "User Name" and type in the user name that you provided your ISP or your ISP provided for you.
3. Click in the box "Password" and type in the password that you provided your ISP or your ISP provided for you.
4. Then click next to "Telephone Number". Enter your ISPs dial-up telephone number.



**Note:** If your office is connected to a PBX or PSTN don't forget to enter the outside number first, followed by a comma, and then your ISPs dial-up number.

5. Click Next.

The next screen is "Provide Detail About Your ISP Account". This screen is important when using a dial-up connection but also depends on your ISP and what information they give you. In the first example we assume that your ISP assigns you an IP address automatically. In which case follow these easy steps.

6. Click the box next "Obtain an IP address from your ISP automatically". Once you click in this box the Internet IP Address, Subnet Mask and Gateway, will be deselected and you will not be able to enter this information.

ISP Information(Continue...)

Step6 : Provide Detail About Your ISP Account

In addition to having an IP address on your local network, your Altos SA50 also needs an IP address to provide it with a unique address on the Internet. Your ISP may be able to automatically assign you an IP address. Check with your ISP for more information.

Obtain an IP address from your ISP automatically

Internet IP Address : 192.168.1.80

Subnet Mask : 255.255.255.0

Gateway : 192.168.1.1

Domain Name Service(DNS) translate IP addresses into the human-readable addresses you are used to seeing on the Internet(i.e. www.acer.com). Your ISP may automatically assign DNS address for you. Check with your ISP for more information.

Primary DNS : 192.168.1.1

Secondly DNS : 168.95.192.1

After you configure your ISP connection information, click Next to continue.

< Back    Next >    Cancel

7. Next click in the box "Primary DNS" and type in the Primary DNS and Secondary DNS.
8. Click Next.

In the second example we assume that your ISP doesn't assign you an IP address automatically and that you will have to enter one now. This is a once off affair so you don't have to retype the information every time you connect to your ISP. Follow the next few steps to get connected:

1. Leave the "Connect ISP by using a modem dial up" box blank.

**ISP Information(Continue...)**

Step6 : Provide Detail About Your ISP Account

In addition to having an IP address on your local network, your Altos SA50 also needs an IP address to provide it with a unique address on the Internet. Your ISP may be able to automatically assign you an IP address. Check with your ISP for more information.

Obtain an IP address from your ISP automatic

Internet IP Address: 192.168.1.80

Subnet Mask : 255.255.255.0

Gateway: 192.168.1.1

Domain Name Service(DNS) translate IP addresses into the human-readable addresses you are used to seeing on the Internet(i.e. www.acer.com). Your ISP may automatically assign DNS address for you. Check with your ISP for more information.

Primary DNS : 192.168.1.1

Secondly DNS: 168.95.192.1

After you configure your ISP connection information, click Next to continue.

< Back   Next >   Cancel

2. Click in the box next to "Internet IP Address" and type in the details provided by your ISP.



-----

**Important!** Remember to separate your first three digits by a dot.

3. Click in the box next to "Subnet Mask" and type in the Subnet Mask your ISP gave you.
4. Click in the box next to "Gateway" and type in the Gateway your ISP gave you.
5. Next click in the box next to "Primary DNS" and type in your Primary DNS and Secondary DNS.
6. Click Next.





-----

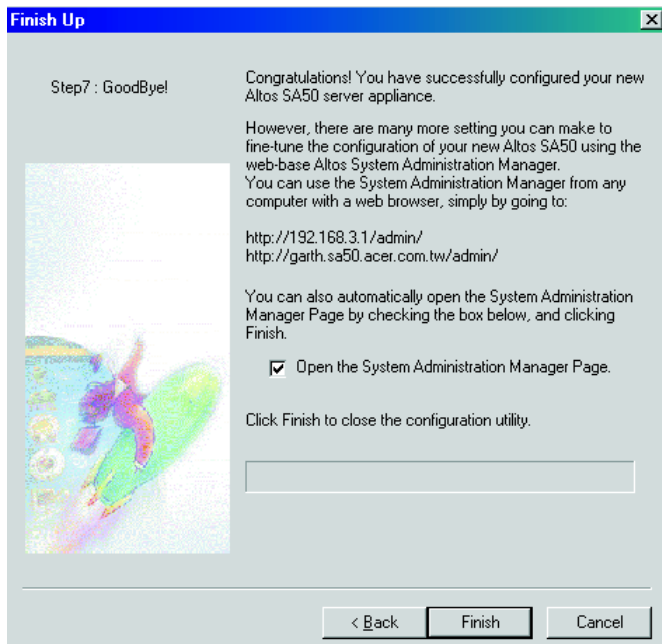
**Caution:** Please note and beware that the "Configure Local Network Connection" and "Provide Details about your ISP account" need to be configured if you want to have a dial-up connection or you want an ADSL or Cable connection. If you don't want to connect using a dial-up connection leave "Provide Connection Detail about your ISP" page as is and don't click in the box next to "Connect ISP by using a modem dial-up".



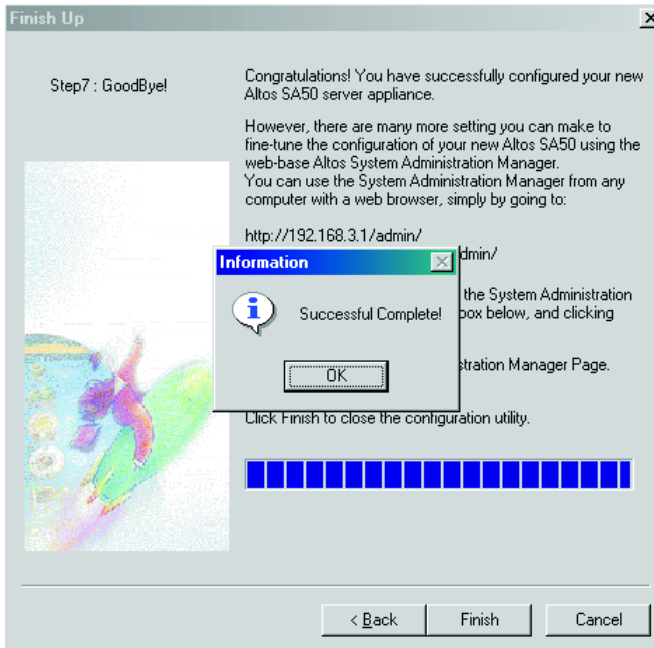
-----

**Important!** Once you have finished these steps and clicked Next, you will see the final screen - "Goodbye". This screen will provide the address you will have to type into your Browser in order to access your SA50 at a later stage. These addresses are important because without them you will not be able to connect to the System Administration software to configure your SA50. Once you click in the box next to "Open the System Administration Manager" and click Finish the program will automatically begin the countdown and when it is complete you will see a pop-up screen indicating "Successfully Complete". At this stage you will notice that the LCD screen will

display "Formatting your HDD". This process should not take longer than five minutes.



- Click OK on the "Successfully Complete" box and you will automatically see the "System Administration Manager" screen pop up.



Here you will be prompted to enter a new password and to confirm your password. Follow the following few steps to move on:

- Click in the box next to "New Password" and type in a new password.



**Caution:** Please remember this new password and keep it in a safe away from intruders.

- Click in the box next to "Confirm Password" and re-enter the password you just typed in.

3. Then click Next. In the background you will notice that your browser has opened, showing the IP address.



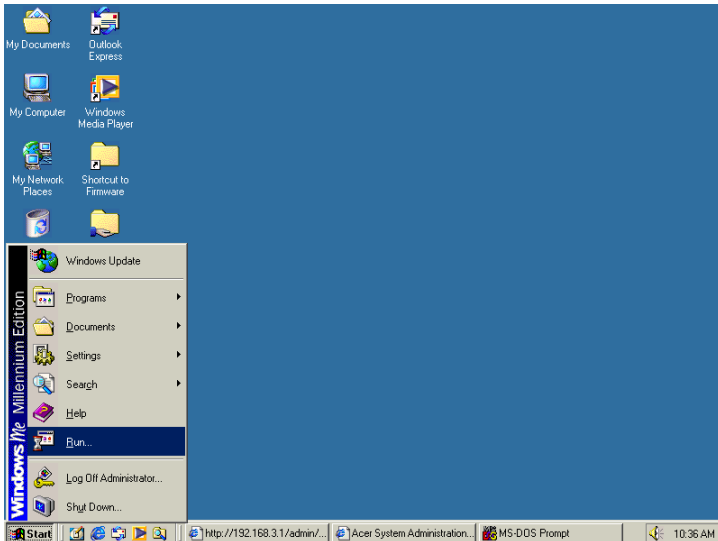
You have now finished the main part of setting up your Altos SA50. This part is crucial in getting your SA50 up and running on your network. The Next stage is to learn how to use the System Administration Manager. This utility has two components: Basic Setup and Advanced Setup. In the first stage we are going to go over Basic Setup so that you can give users various permissions. We will also authorize file sharing and set the system clock.

## ▶ Using the service pack

The most important part of the SA50 is the Service Pack. It contains resources to "Mirror and "Format" the hard drive, "Backup and Restore" data, "Update the Firmware" and "Reset the Disk On Chip" (DOC) card. Most of these features need to be carried out once you have setup your SA50 or if need be, sometime after the system has been used for a while. It should also be noted that if you do not understand any of the following procedures have a professional engineer help you setup and do the diagnostics for you. Lets begin with "Backup and Restore".

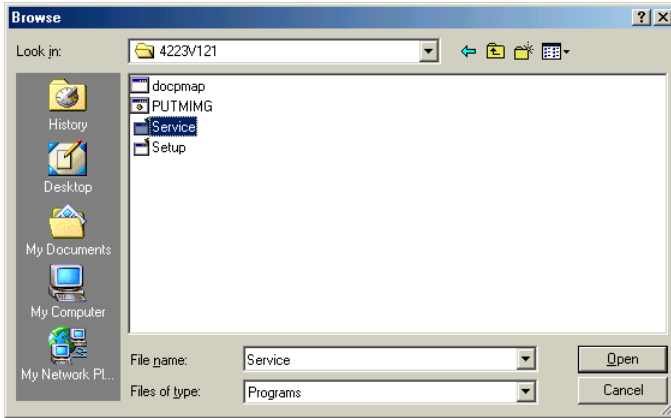
To enter the "Service Pack", do the following:

1. Insert the SA50 floppy or CD-ROM into the respective drives. If the program doesn't execute automatically, click "Start" then "Run".



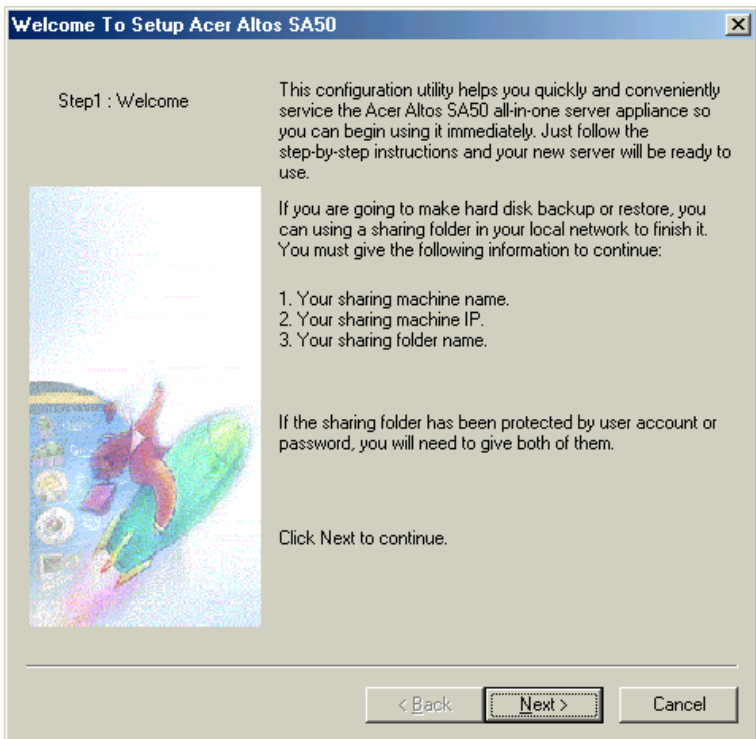
2. The "Run" program will start. Click "Browse" and browse your floppy or CD-ROM drive depending on whether you are running the service

program from either one or the other. You'd be looking for the "service.exe" program.



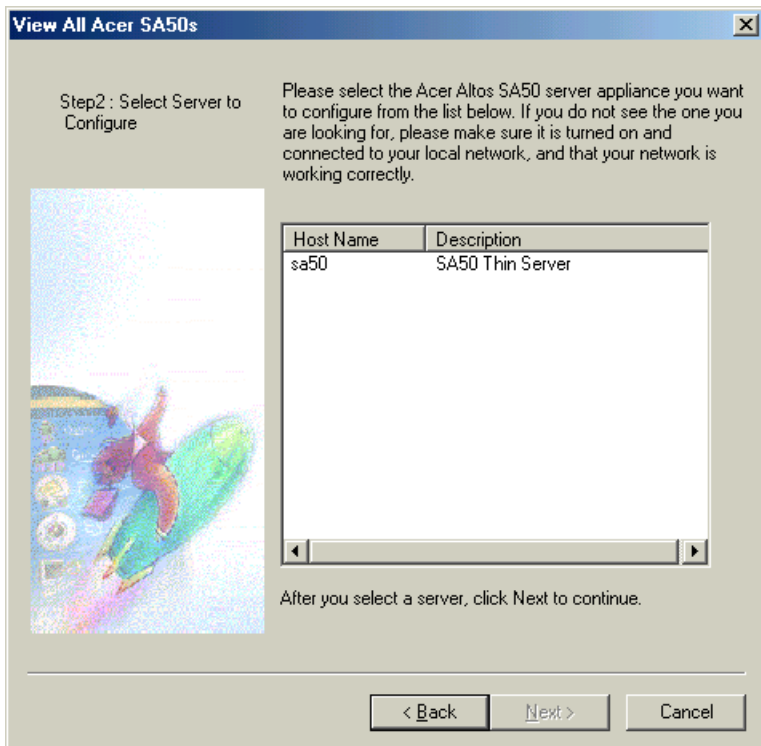
3. Click open. Then click "OK" under the "Run" program. This will start the "service.exe" program automatically.

4. The first screen is the "Welcome" screen.



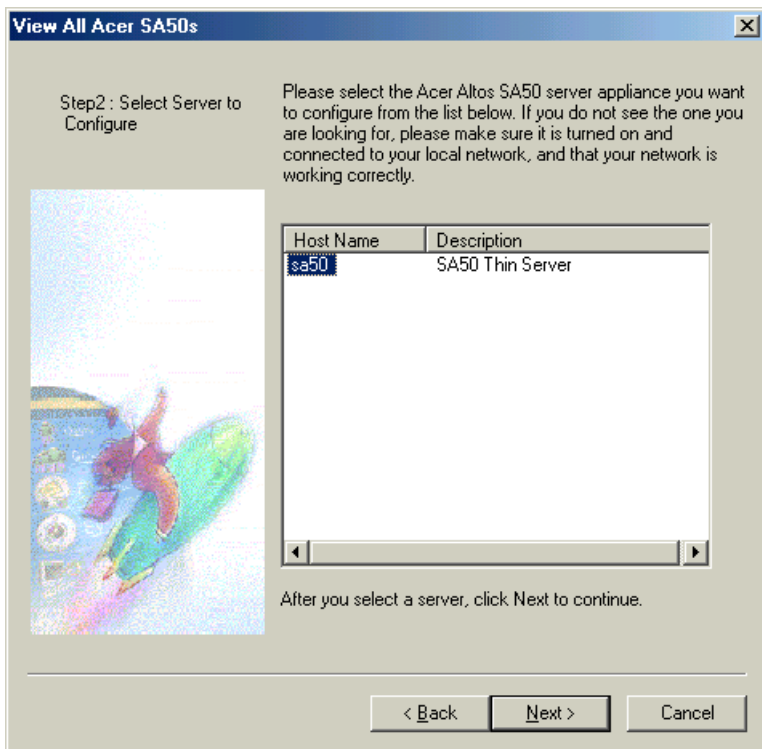
This screen gives you a rundown of what the service pack does and how you can go about running the various utilities that come with "service.exe". Click "Next" to proceed.

The service program will scan your local network to search for your SA50. If your SA50 is off, a screen will pop up notifying you that it cannot find your SA50. However, if your SA50 is found you will see the following:





Click your SA50 to activate the "Next" button.



The "Next" button will take you to a prompt screen where you will be asked to enter your username and password accordingly.





**Note:** If you have just run the setup program and haven't configured your SA50 yet, remember that you will still be using the default username and password (the aforesaid being "administrator" and the latter being "admin"). Once you have entered the "User Name" and "Password" click OK.

Authentication

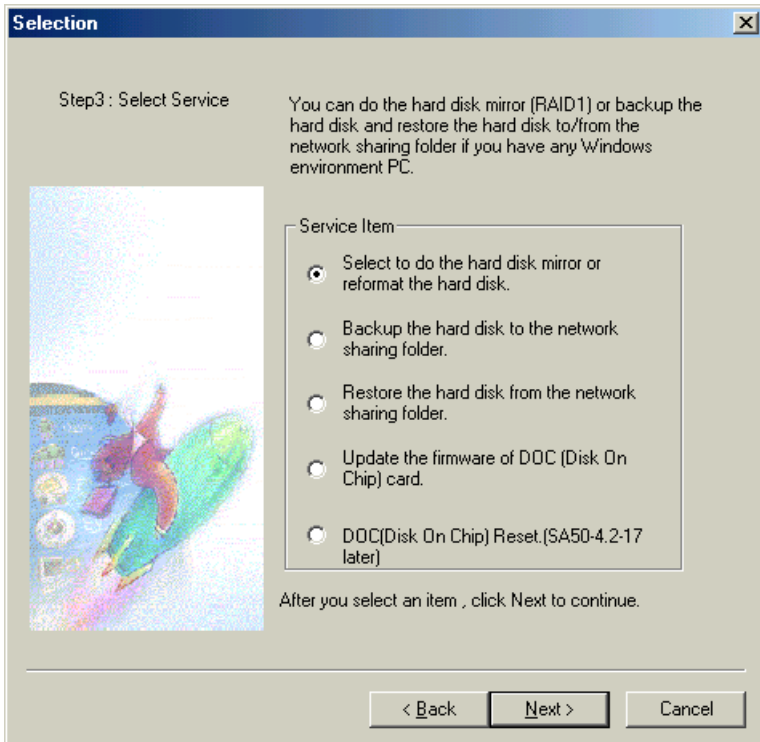
User Name : administrator

Password : xxxxxxxx

OK Cancel

Once you have clicked "OK" you will either get a "Failed Authentication" pop up screen or you will move on to the next screen in the service.exe program. If you get the "Failed Authentication" pop up screen, click OK and reenter your username and password.

The next screen gives you a list of several "service items" that you can run on your SA50.



In order to cover a broad spectrum of topics it is important to know what service item suits you best and how you can apply this feature to your system. The tasks are quite straightforward so lets take a look at the second item first "Backup the hard disk to the network sharing folder" before looking at other items so that you don't lose any data.

## Backup

Before proceeding with the following steps it is important to write down and know your SA50 configuration. It is also recommended that you know your client's computer name (also known as the host name) and the "workgroup" that it is in, in order to backup data to your client computer and restore it.

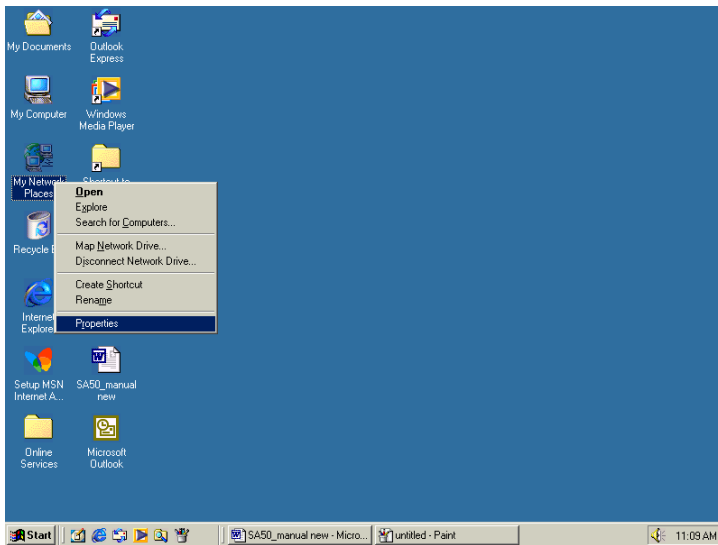
## The SA50

Make sure your SA50 is up and running, go to the System Administration Manager and check the following:

1. Under "Advanced" click "Local Area Network".
2. Write down the SA50's workgroup.

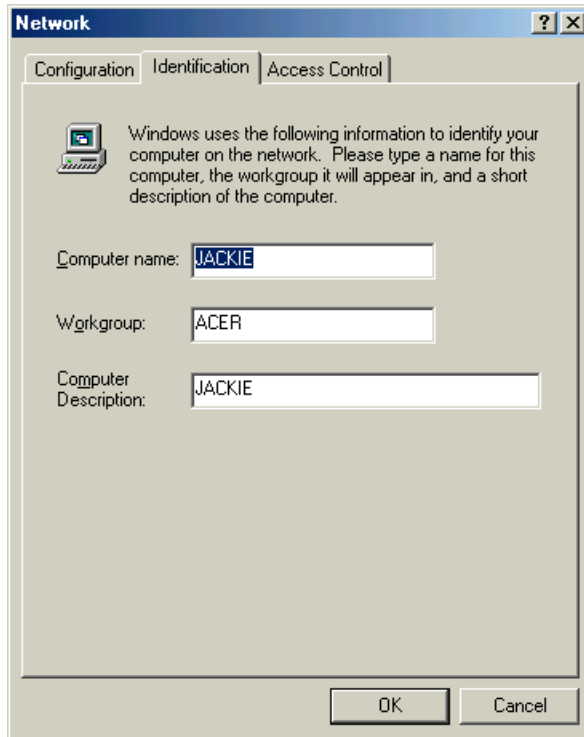
## The client used to access the SA50

Make sure the client being used to access the SA50 is up and running, right click "Network Neighborhood" and go to "Properties".



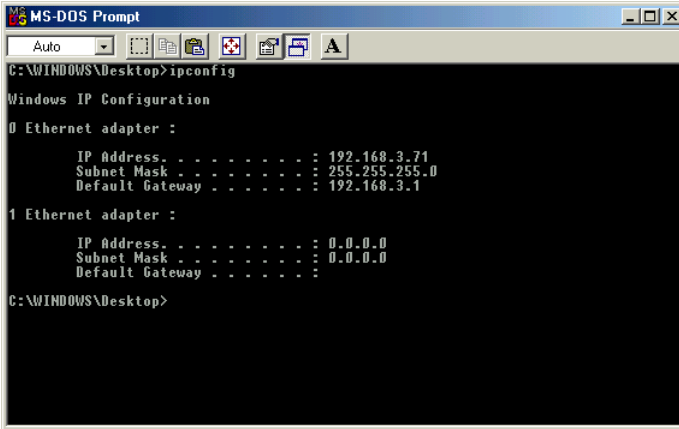
Go to "Identification" and write down the client's computer name (host name) and workgroup. Make sure that the client used to access your SA50 is in the same workgroup as your SA50 machine. This is not a criteria but it

would help. Actually, the SA50 relies on Subnetting but to be on the safe side follow the procedure.



If your client and SA50 are in different workgroups, rename your client workgroup to that of the SA50. Restart your client. When you reboot your client it will get a new IP address from the SA50. To check this you can

click "Start", 'Programs", MS-DOS prompt and type "ipconfig" and press "Enter".

A screenshot of a Windows MS-DOS Prompt window. The title bar reads "MS-DOS Prompt" and the address bar shows "Auto". The command prompt shows the command "ipconfig" being executed. The output displays the IP configuration for two Ethernet adapters. Adapter 0 is configured with IP 192.168.3.71, subnet mask 255.255.255.0, and default gateway 192.168.3.1. Adapter 1 is currently unconfigured, showing 0.0.0.0 for all fields.

```
MS-DOS Prompt
Auto
C:\WINDOWS\Desktop>ipconfig

Windows IP Configuration

0 Ethernet adapter :
    IP Address. . . . . : 192.168.3.71
    Subnet Mask . . . . . : 255.255.255.0
    Default Gateway . . . . . : 192.168.3.1

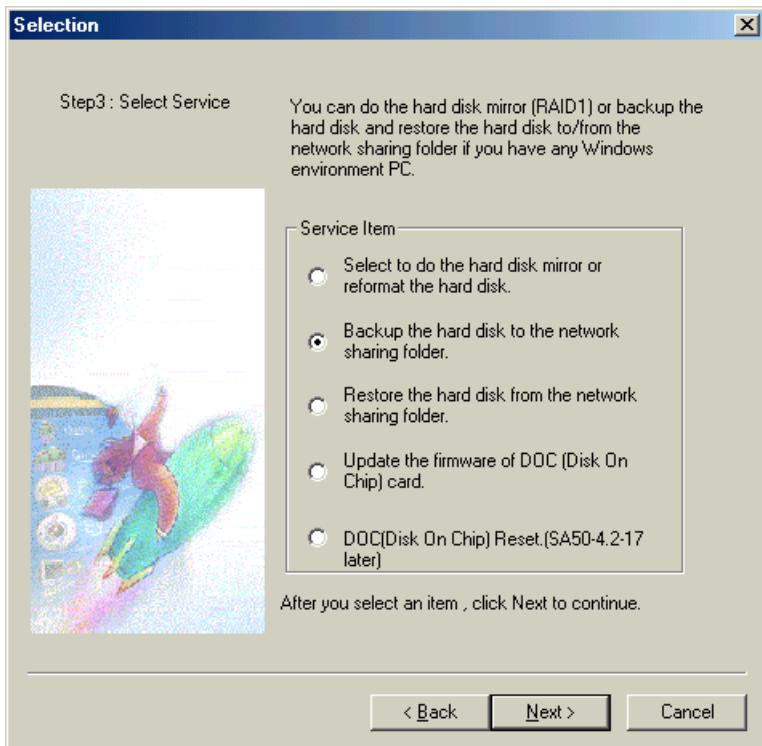
1 Ethernet adapter :
    IP Address. . . . . : 0.0.0.0
    Subnet Mask . . . . . : 0.0.0.0
    Default Gateway . . . . . :

C:\WINDOWS\Desktop>
```

If your SA50 is acting as a DHCP server, then it will give the client an IP address from the pool of addresses.

## Backup

1. Select the backup item from the setup program.




2. Click "Next".

3. The next screen asks you to enter some data that you collected from previous procedures.

**Backup Page** ✕

Step4 : Backup Stage



The backup procedure will copy and compress the hard disk file to the network sharing folder. You must give the machine name, machine IP address, sharing folder name, and the user name, user password if the sharing folder has been security protected.

Computer Name :  (Required)

Host IP Address :

Sharing Folder Name :  (Required)

Sometimes, the sharing folder will be protected by owner and password, so you need to give the account and password.

User account :

Password :

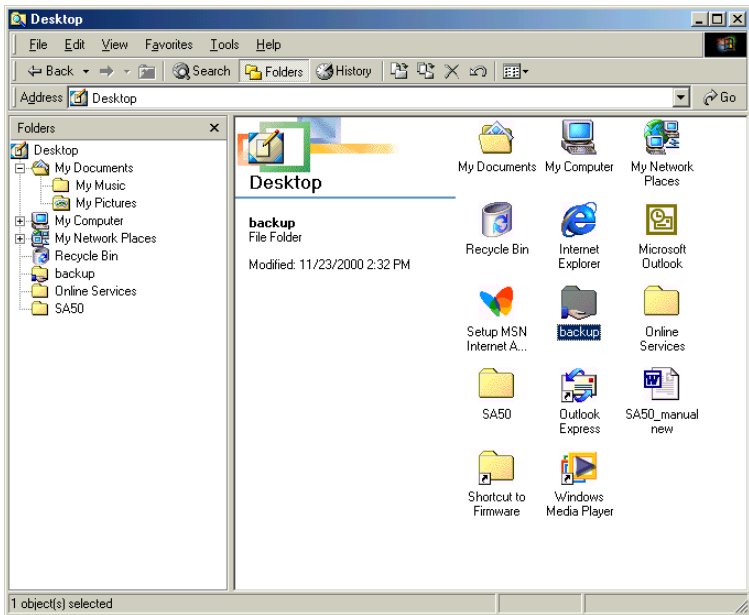
After you enter the backup information, click Next to continue.

Here you have to enter data pertaining to your client that you are using to access your SA50. In our previous title "Setting up your client used to access the SA50", we explained how to get your "Host Name" and "Host IP Address". The "Host Name" (Computer Name) can be found in "Network Neighborhood" under "Identification" and the "Host IP Address" can be found if you do "ipconfig" under MS-DOS. To share folders in Windows 98 follow the following procedure:

1. Click "Start", "Programs", "Windows Explorer".
2. In "Windows Explorer" create a folder called "Backup".



3. Right click it, go to sharing and share the folder.



4. Now enter this folder name in the field "Sharing Folder Name".

- In the next field enter the username and password if necessary. Then click "Next".

**Backup Page** [X]

Step4 : Backup Stage

The backup procedure will copy and compress the the hard disk file to the network sharing folder. You must give the machine name, machine IP address, sharing folder name, and the user name, user password if the sharing folder has been security protected.

Computer Name :  (Required)

Host IP Address :

Sharing Folder Name :  (Required)


Sometimes, the sharing folder will be protected by owner and password, so you need to give the account and password.

User account :

Password :

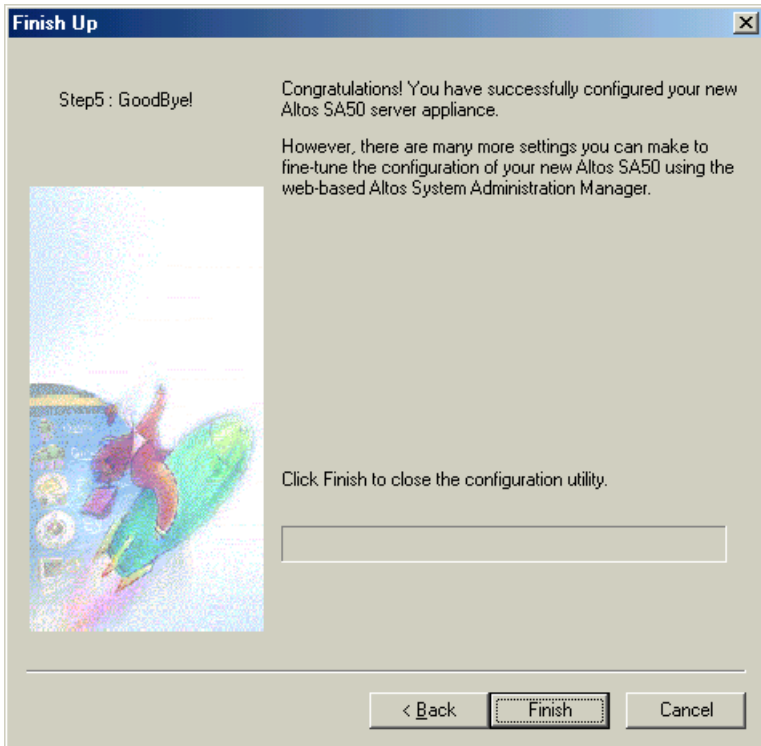
After you enter the backup information, click Next to continue.

< Back    Next >    Cancel

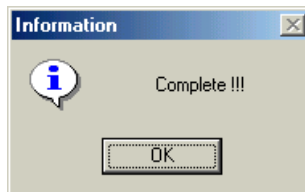


Click "Next" to proceed.

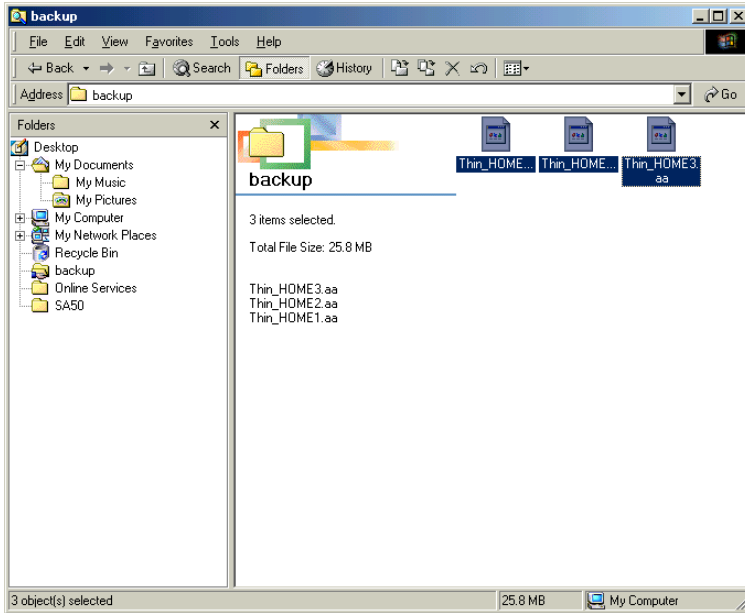
You will be directed to the following screen:



Click "Finish". The program will show a progress bar. In the background, it is running the service program to copy your SA50 system files over to the shared folder. When you are finished, you will see the following screen this verifies that the program is complete. Click "OK".



In order to make sure that your files have been saved to that directory, go to Windows Explorer, click on the shared folder and inside this folder you will see a couple of "zip" folders depending on how much information you had to backup. See the diagram below for details:

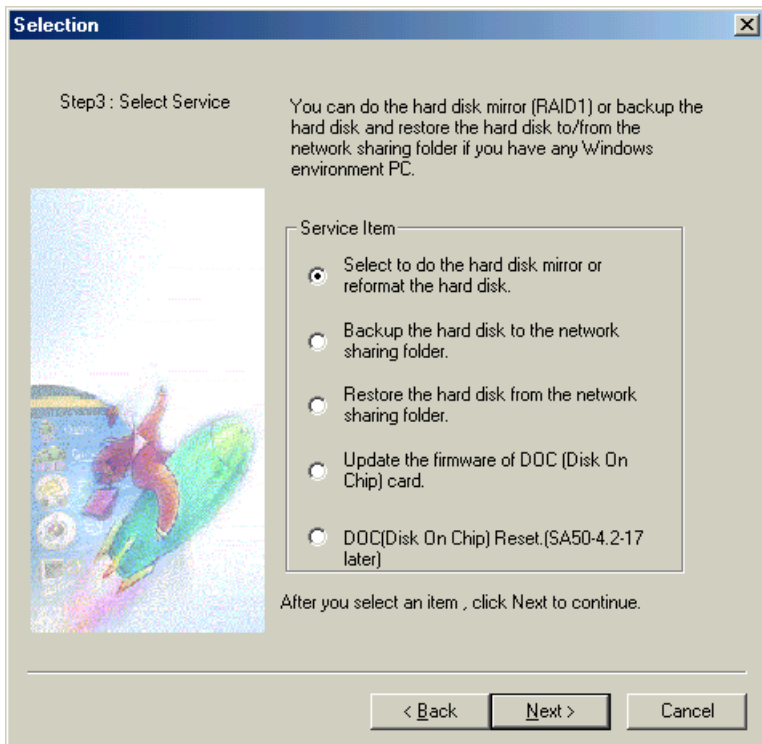


The next item we are going to take a look at is "Disk Mirroring". Disk mirroring allows users to copy data, in tandem, which is stored on one disk and copied to another disk on the system. Disk mirroring is ideal for companies who want to backup data, have a security need for their data and an overall peace of mind. Let's take a look at how to setup disk mirroring on the SA50 and how it can benefit your business.

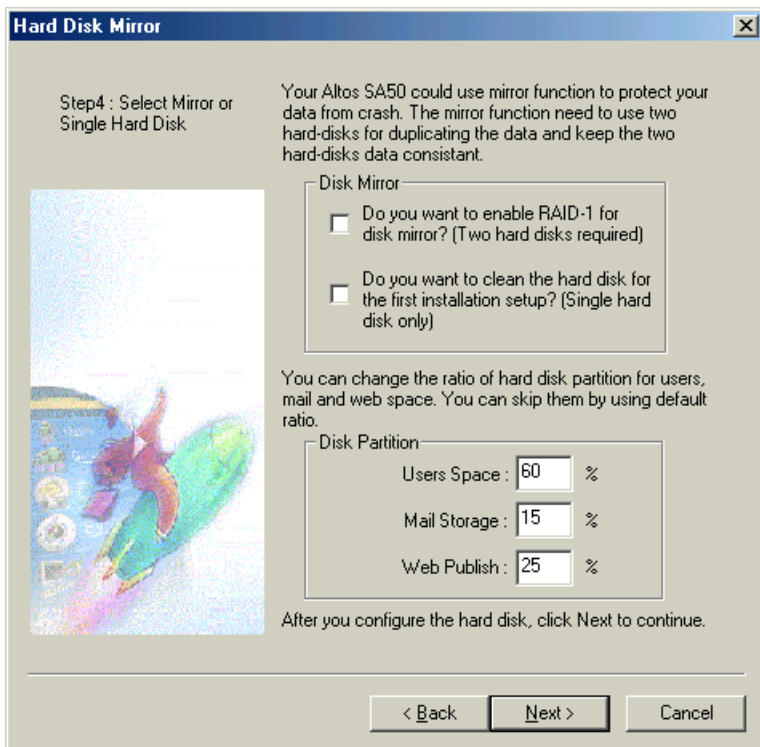
## Disk Mirroring

In order to do disk mirroring users need to install a hard disk that is exact in make and model to the one you have in your system right now. This job can be done by Acer's help center or by the dealer from which you bought your SA50. If not, install your hard drive on IDE2 as "secondary master" but be warned if you have no previous computer experience, it would be better to leave this task to a professional. Lets begin with setting up the mirroring. Once you have installed the second hard drive start the

"service" program. Double-click it and you will proceed to the following screen:

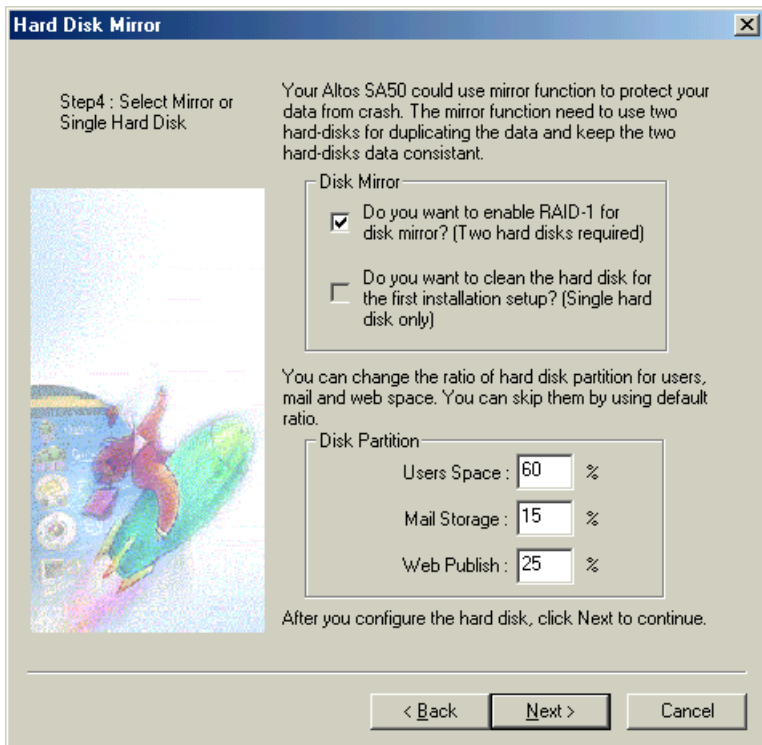


Click "Next" to enter the next stage.

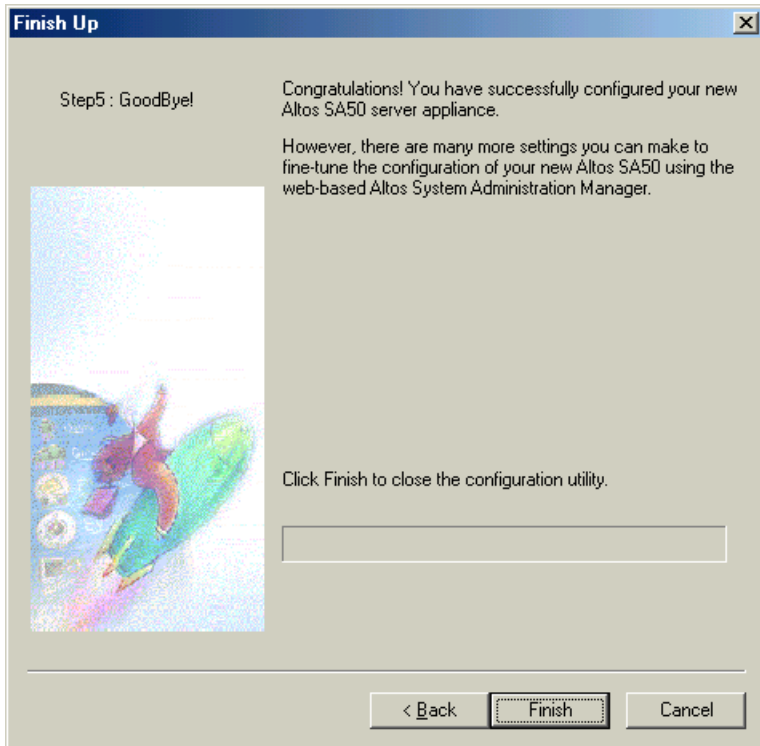


Here you will be directed to a screen that asks you two questions. The first "Do you want to enable RAID-1 for disk mirror(ing)?" and the second asks you "Do you want to clean the hard disk for the first installation setup?" Choose the first option. You can also set separate partition sizes for three different systems "Users Space", "Mail Storage", and "Web Publishing". When you get to this screen you will notice that the default partitions are already in place. At best it would be good if you follow the default settings.

This will prevent you from making too small a partition size next time you restart your SA50.



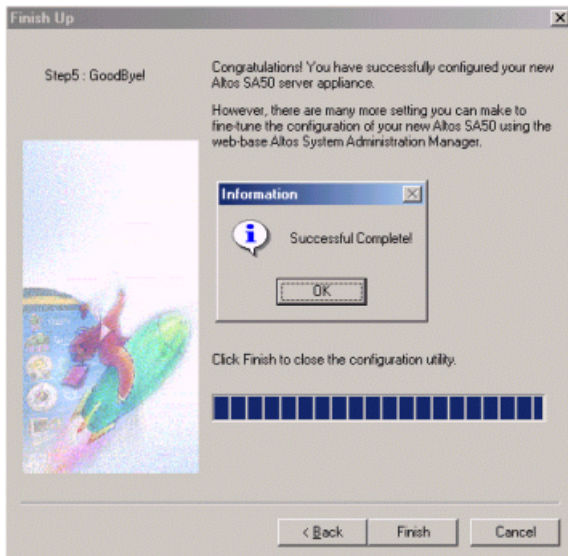
Click "Next".



This will move you on to the "Goodbye" screen. Click "Finish". The LCD screen on your SA50 will show that it is configuring RAID. It will also show a progress bar on the LCD screen (albeit a small one). This process should take approximately 30 minutes but this depends on the amount of data you have and the size of your hard disk. Expect to wait much longer if you



have a bigger system. When the procedure is complete you will see the following screen.

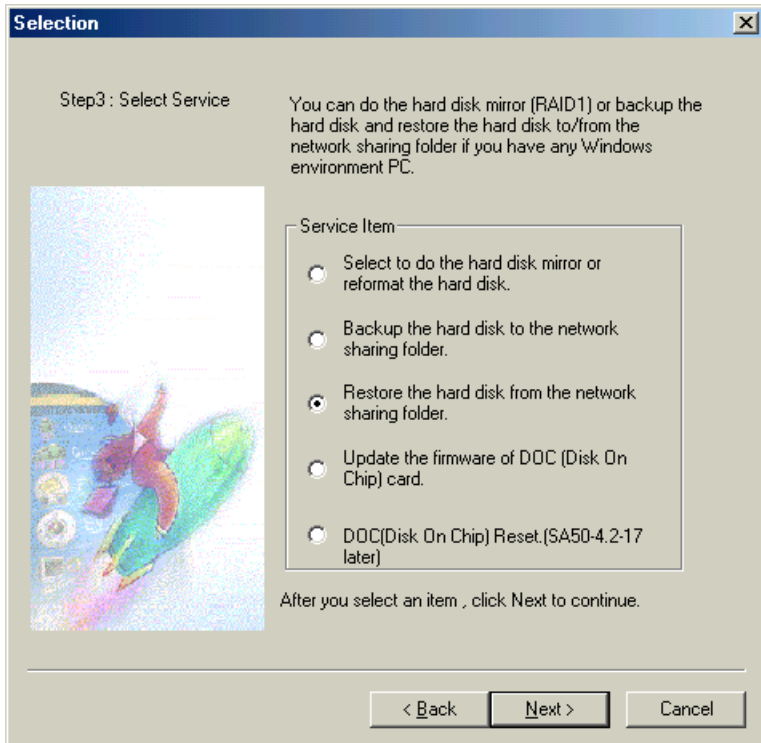


You have now completed the disk mirroring process. The next step is to restore your data from the shared folder on the client that you are using to access your SA50.

## Restoring Data

1. Start the "service" program again (double-click service.exe).

2. Select the third option "Restore the hard disk from the network shared folder".



3. Click "Next".

4. You will reach step 4 "Restore Stage".

**Restore Page** [X]

Step4 : Restore Stage

The restore procedure will restore the hard disk file from the network sharing folder. You must give the machine name, machine IP address, sharing folder name, and the user name, user password if the sharing folder has been security protected.

Computer Name :  (Required)

Host IP Address :

Sharing Folder Name :  (Required)


Sometimes, the sharing folder will be protected by owner and password, so you need to give the account and password.

User account :

Password :

After you enter the backup information, click Next to continue.

< Back    Next >    Cancel



- Once again you will have to enter the "Host Name", Host IP Address and "Sharing Folder Name".

**Restore Page** [X]

Step4 : Restore Stage

The restore procedure will restore the hard disk file from the network sharing folder. You must give the machine name, machine IP address, sharing folder name, and the user name, user password if the sharing folder has been security protected.

Computer Name :  (Required)

Host IP Address :

Sharing Folder Name :  (Required)

Sometimes, the sharing folder will be protected by owner and password, so you need to give the account and password.

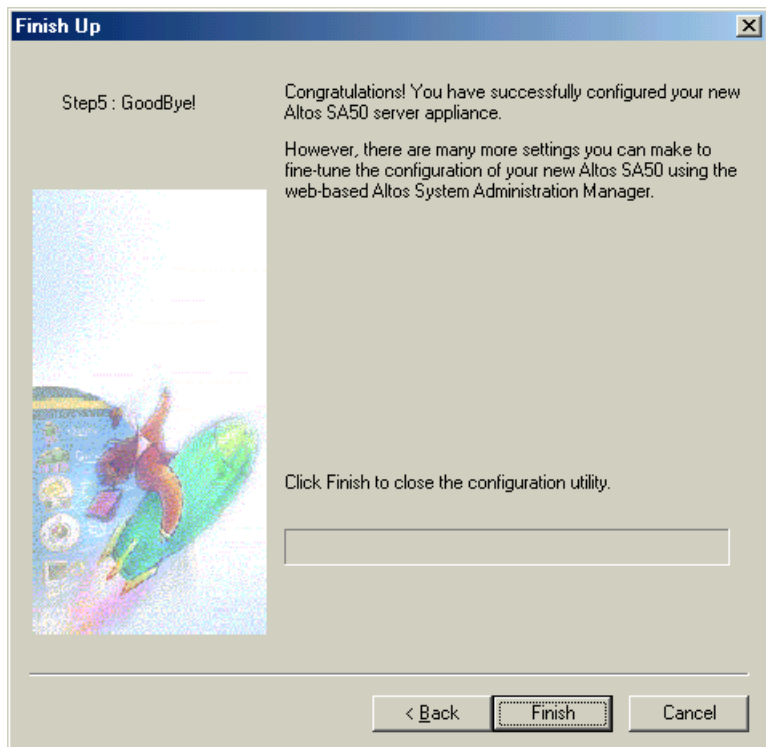
User account :

Password :

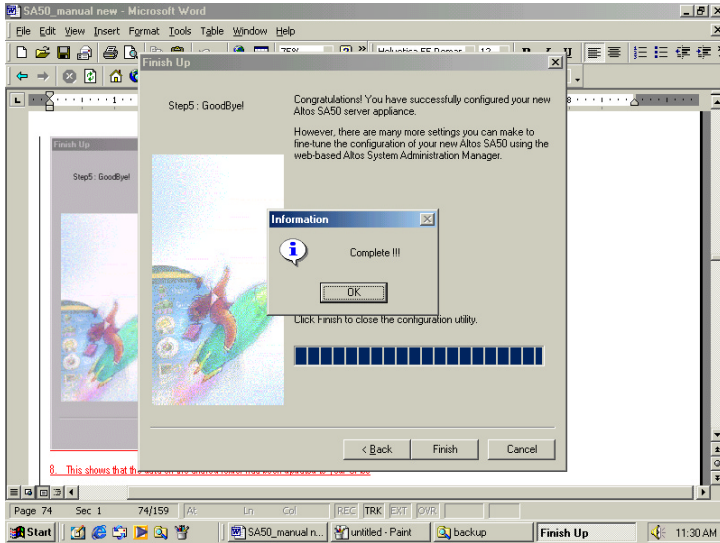
After you enter the backup information, click Next to continue.

< Back    Next >    Cancel

6. Click "Next" once you have entered all the data.



- Click the "Finish" button to complete the process.



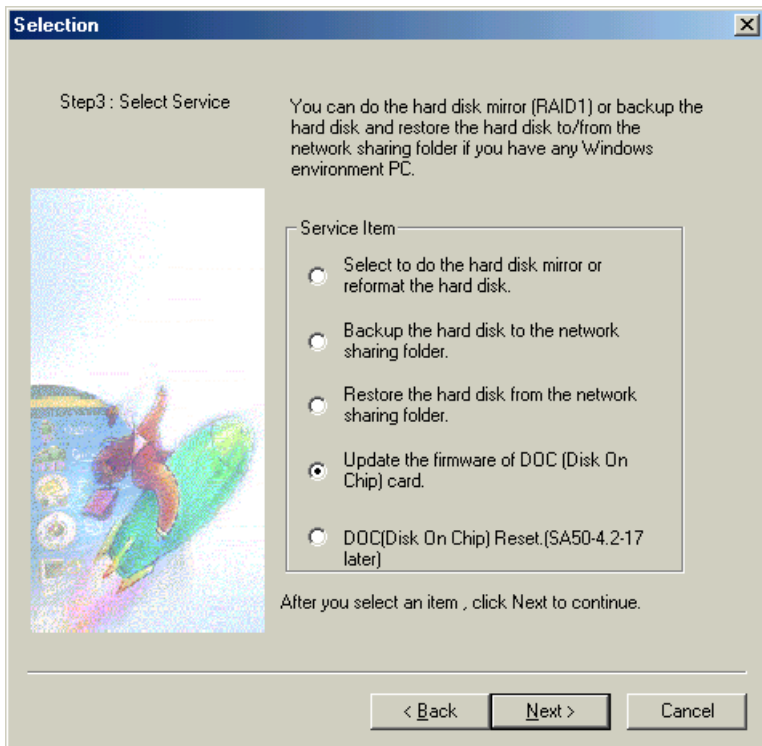
- This shows that the data on the shared folder has been updated to your SA50.

You can now enter the System Administration Manager and check to see that all users and data are in place on the SA50.

The next set of procedures can be handled separately depending on your needs but please ask a professional if you are unsure of what these procedures mean or contact an Acer dealer for help. When you enter the service program once again, you will notice that there are two more procedures. One is updating the firmware and the other is resetting the DOC card. We advise that users take their SA50 into an Acer office if they want to update the firmware. The firmware is software that resides on a piece of hardware. All SA50 functions are controlled by this firmware and in order to update the firmware users need to get the patch from an Acer distributor. Lets begin.

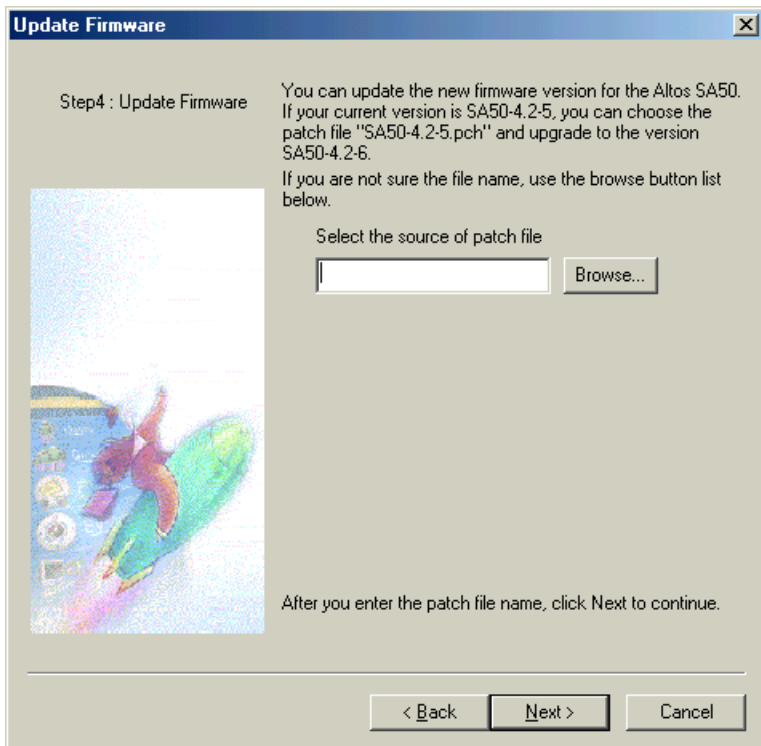
## Updating the Firmware

1. Double-click the service program once again. Here you will need to select your SA50 and enter the username and password. Under Step 3 "Select Service" click "Update your Firmware".



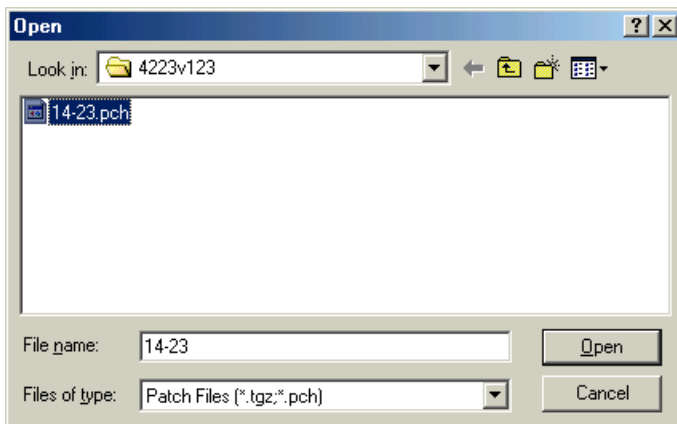
2. Click "Next"

- Step 4 reveals the Update Firmware page. Here you will have to enter or browse to the path where the updated firmware resides. If you know the path type it in, otherwise click browse.

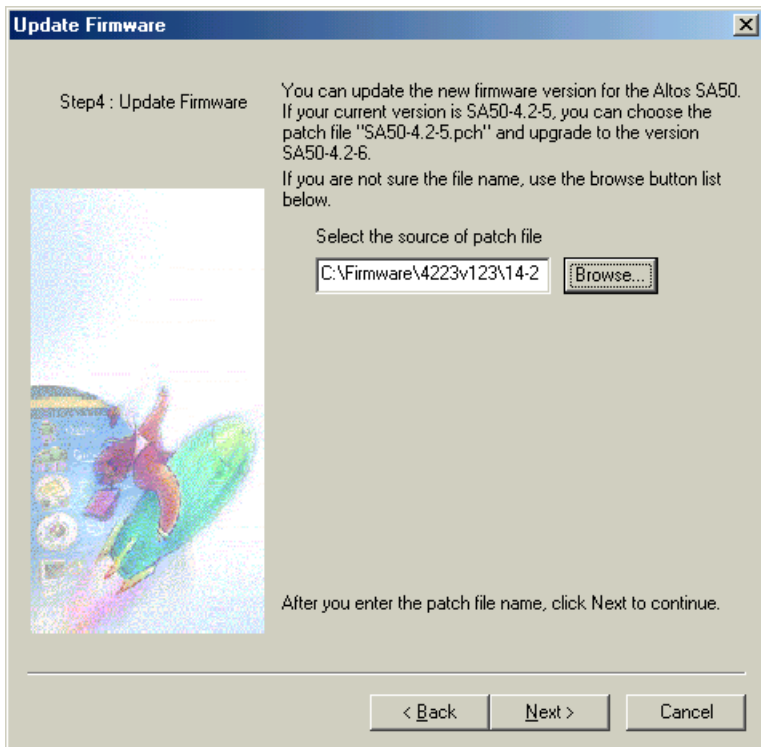




4. Browse to the directory or folder where your SA50 updates reside and click "Open".

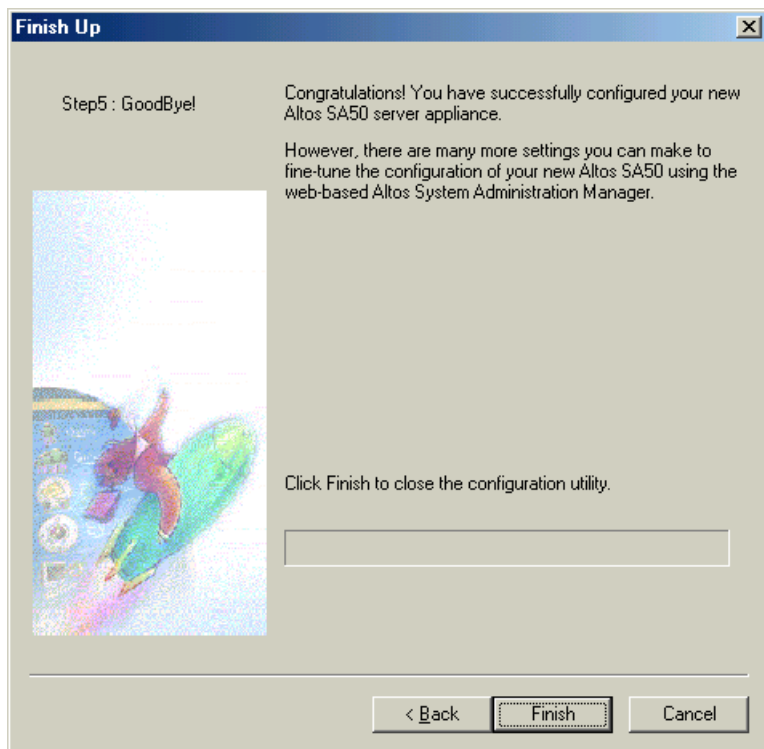


5. You will now notice the file path in the field.

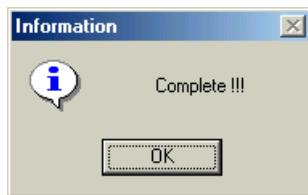


6. Click "Next". Once again you will see the "Finish" screen.

7. Click "Finish".



The program will run and you will see the progress bar again. The last step shows that the software has been successfully updated.



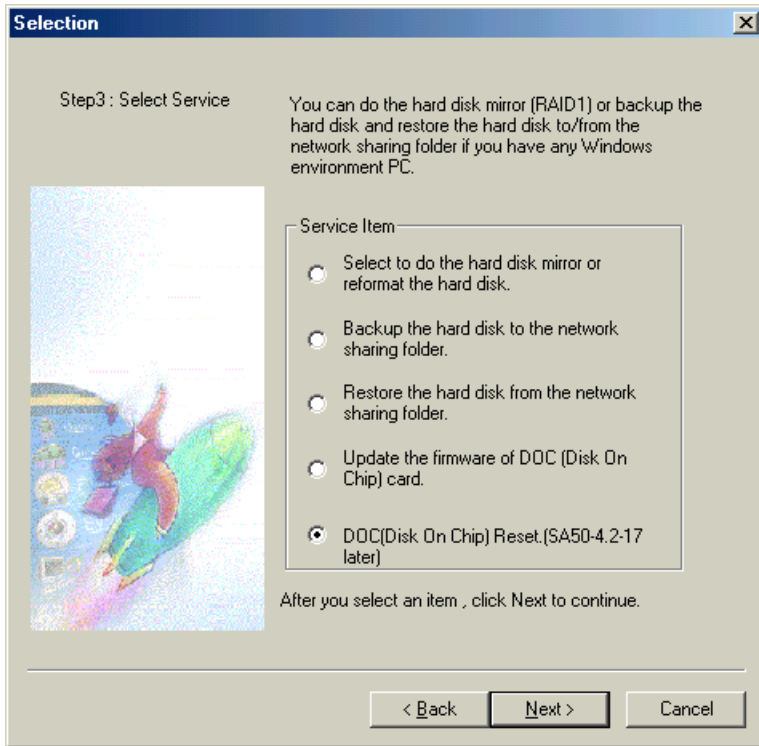
8. Click "OK" to finish.

This leaves us with the last step in the service program. This is resetting the DOC chip. Only do the following if you have totally backed up all your

settings and stored them in a safe place. Acer advises that a recognized Acer vendor or systems engineer only carry out this procedure.

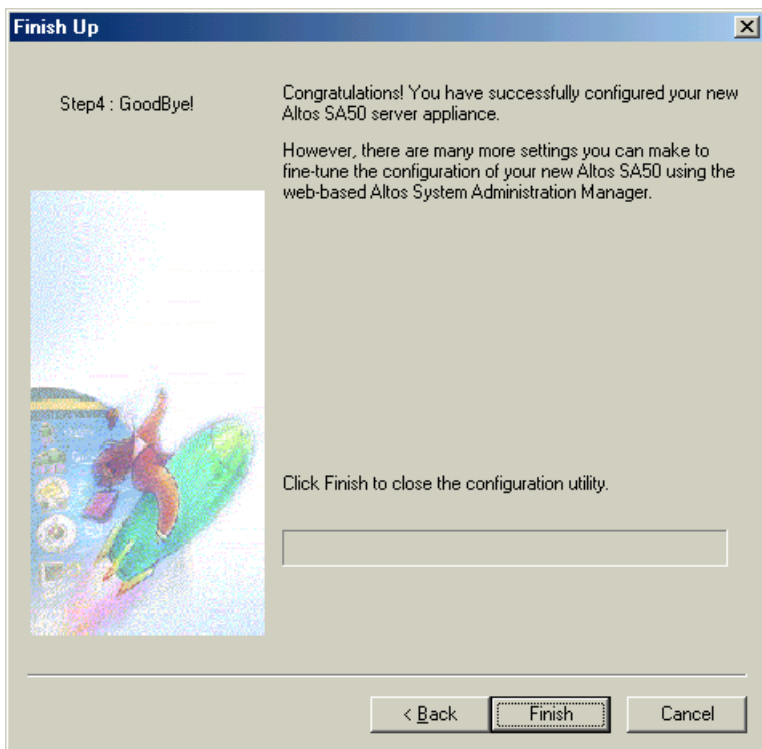
#### Resetting the DOC (Disk-on-Chip)

1. Double-click the service program.
2. Enter a username and password when prompted.
3. Click the radio button next to "DOC Reset".

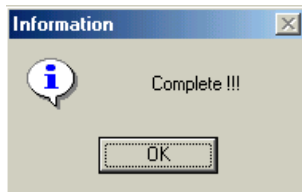


4. Click "Next". The program will automatically go to the "Finish" screen.

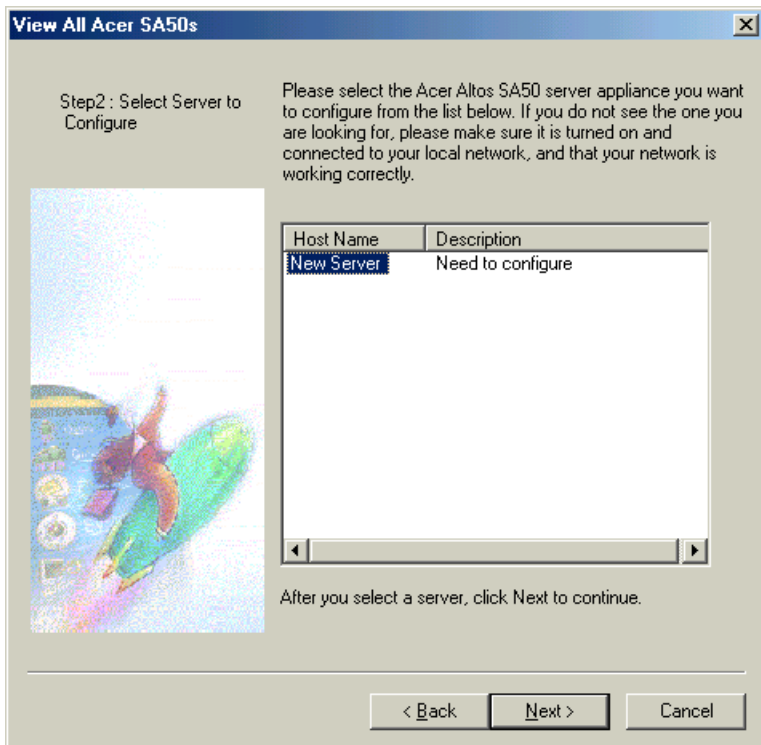
5. Click "Finish".



6. The progress bar will show you that your SA50 has successfully finished the procedure.



7. Click OK. When the program starts again, you will see that you will need to configure your SA50 again.



8. Click "Next" to start the setup procedure from scratch.

## ▶ Using the Altos SA50 System Administration Manager

When you log on to the Altos SA50, the System Administration Manager displays on your screen. The System Administration Manager provides your workplace. You can expand your workplace adding multiple users. For example, instead of creating one user, you can create many users to access your SA50 simultaneously. You can have one user accessing a file, another accessing the Internet and another checking his/her email. The SA50 is virtual in that it lets you extend your office workspace beyond the area immediately visible on your computer screen.

The Basic Setup contains three main components: Users, File Sharing and System Clock. Use the panel to:

- Create, edit and delete new and existing users
- Create, edit and delete new and existing folders so that users can access and share files
- Set the System Clock, depending on your region and time zone.

Usually, in a network environment a company will select an employee with some computer skills to administrate the network. This person is usually called the System Administrator. It is the system administrator's job to manage users, files, printers, the Internet and the intranet.

To make your administration as easy as possible, we are going to create a fictitious company, give it some employees, select an administrator and give you step-by-step examples of how to setup your Altos SA50 server. The next page takes you through this procedure.

### Welcome to Tom & Jerry's Toys

Tom & Jerry's Toys is a paper company that we have created to show users how to setup the Altos SA50. Follow the network administrator as he sets up his company's new Altos SA50 server.

The first thing the administrator must do is set up user accounts for the personnel at "Tom & Jerry's Toys". The Users page allows the administrator to manage users on the server in the company. The Users page displays information for each user account, including the user name, full name, mailbox size, free space remaining in their mailbox, administrator privilege status, and web publishing status. Everyone who

wants to use email or have a personal web publishing service provided by the server must have a user account.

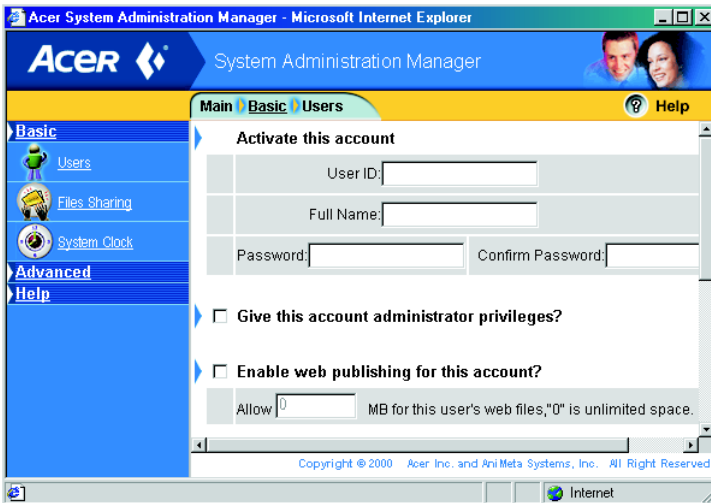
## Creating a new user account

User names and passwords are case insensitive. For example, the names "john" and "John" represent two entirely different users. User names and passwords must be between 1 and 16 characters in length, and may contain letters, numbers, and the underscore character.

To create a new user account:

For "Tom & Jerry's Toys" we are going to set up five users. The following procedures are the same for all five employees, so we are only going to show you once. Lets setup an account for Mike Stanley, the Marketing Manager.

1. Click the Create New User link at the bottom of the page. Figure 1 is a screenshot of what will appear.



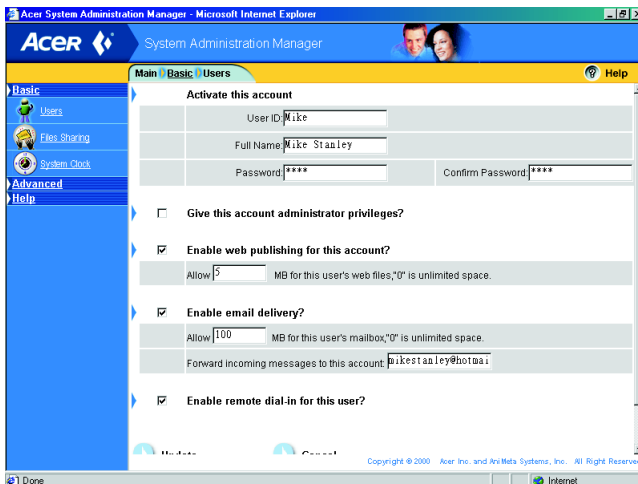
2. Type a user ID, full name, and password for the new user.
3. Then type the password again in the Confirm Password box. In our example we fill in Mike's details.
4. Mike is the Marketing Manager so he does not have administrative privileges. In this example leave the "Enable this account"



administrator privileges unchecked. If you want to give this user administrative privileges, select the checkbox beside it.

5. If you want to allow a user to publish a personal web site, select the checkbox beside "Enable web publishing for this account". In our example we have given Mike 5MB. This is ample for any user.
6. If you want to give the user a new Internet email account, select the checkbox beside "Enable email delivery". In this example we have given Mike 100MB. Once again more than enough because you don't want to overload the system.
7. If you want to allow the user to dial-in from a remote location using a modem, select the checkbox beside "Enable remote dial-in for this user"
8. "Forward incoming messages to this account" refers to another address that the user might have. Here are messages will be forwarded to the email address mentioned or imputed by the SA50.
9. Click Update and the user information will automatically be placed on the server. To check this click "Users" again.

The following diagram illustrates the above-mentioned details.




## Editing an existing user account

Occasionally, you may need to update some of the details in an existing user account. When updating a user account, you can change the user's

full name, mailbox size, administrator privileges, web publishing status, and forwarding email address. You can only modify the properties of one user at a time.


To update an existing user account:

1. Click the "Edit"  button in the Action column for the user you want to modify.
2. Change the appropriate fields and then click Update to save the changes.

## Deleteing a user account

When someone leaves the company or organization, you should delete or deactivate their user account. Otherwise, that person may be able to gain access to your server through the Internet, which may pose a security risk to any information that you have stored there. You can only delete one user at a time.

To delet an existing user account:

1. Click the "Trash"  button in the Action column of the user that you want to delete.



.....

**Note:** At this moment, we will not address email but you can find more details on the SA50's email service under the "Email" section.

Now Mike needs to communicate with PR cause he wants to hire someone for his department. In order to give these details to PR he must be able to share files. So the next thing the administrator needs to do is set up "File Sharing".

## File sharing

The File Sharing page allows you to manage shared folders on your SA50 server. When creating or updating a shared folder, you can provide a description for the folder, as well as set the directory quotas and access permissions. You must have administrative privileges to create or update a shared folder.

The shared folders page displays information for each shared folder, including the folder name, description, size, free space remaining, owner, and access permissions. You must share a folder before other users on

the network can see it, or any of the files in it, from another computer on the local network.

Access permission provides share-level access control. This means that authorized users have the same permission on a shared folder; you cannot specify user-level access control to provide different users with different access permissions. Access permissions are applied to an entire folder and its contents, which means all files and subdirectories in a folder will inherit its access permissions.

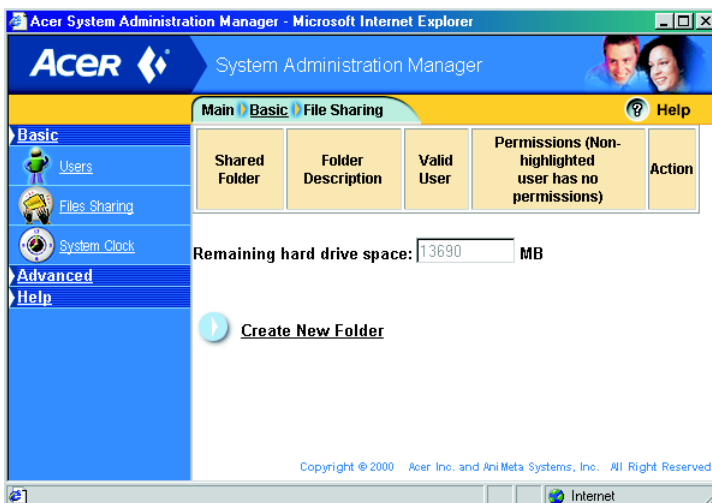
## Creating a new shared folder

Folder names are case insensitive. Folder names must be between 1 and 999 characters in length, and may contain letters, numbers, and the underscore character.

In the next example the administrator is going to create a new folder named "New Recruits" for Mike and Lauren (the PR Manager) to share.

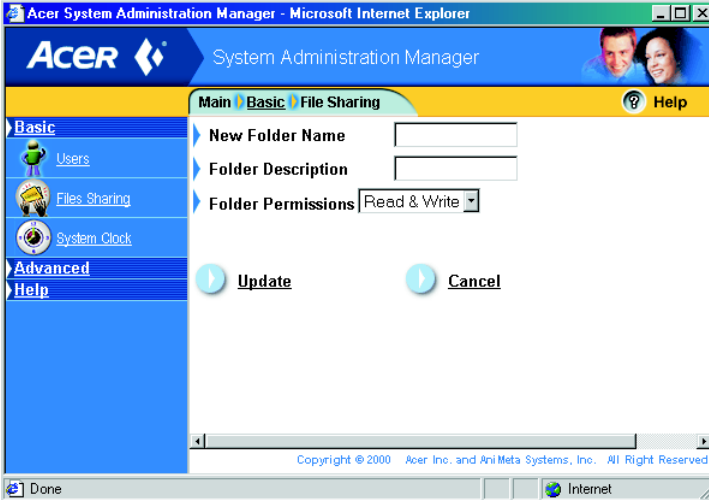
To create a new shared folder:

1. Click the File Sharing link under "Basic Administration".



2. Then click "Create New Folder".

3. You will notice the following screenshot.



4. Type a name and description for the new folder.
5. Select the access permissions for the new folder.
6. Click Update.

In our example the administrator creates a folder called "New Recruits" in the "New Folder Name" box. Then give it a description called New Employees in the "Folder Description" box and gives it both "Read and Write" permissions so that Mike and PR (Lauren) can edit and change the documents in this folder.

## Modifying an existing shared folder

Occasionally, you may need to update some of the details for a shared folder. When updating a shared folder, you can change the folder description, size, owner, and access permissions. In our example, we have to modify the existing shared folder because Lauren should only have "Read" permissions. Please check which user permissions you are using on the client (user-level or share-level)

1. Click "File sharing" under "Basic Setup".
2. Click the new folder you just created, "NewRecruits".
3. Under Permissions, click on the drop down list and choose "Read Only".

#### 4. Click Update.

It is important to note that that the SA50 accepts alphanumeric letters and underline for Folder names and User names.



**Note:** Follow the same procedure, as above if you want to give any user "no access" permissions.

## Uploading documents to your SA50

Mike has just written a Word document detailing the kind of applicant he is looking for. He needs to upload this document to the SA50 so all relevant users can view or modify its contents. Mike goes to his Word document and does the following:

1. Click "File", "Save As".
2. Under "Save in", Mike browses down the drop down list to the network shared folder "NewRecruits" in the SA50.
3. Under "File Name", types the document name "Salesperson".
4. Clicks "Save".

The document is now saved in the shared folder and anybody who has access permissions can access the document.

## Viewing the shared folder

Lauren wants to view the shared folder. So she goes to her Windows® desktop and does the following:

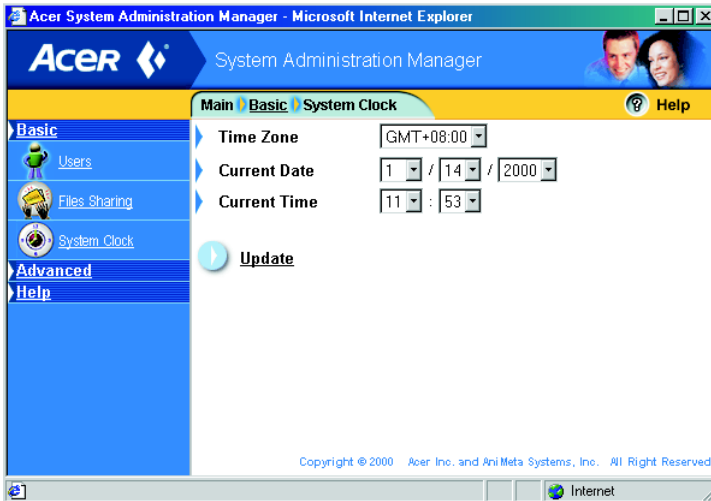
1. Double-click "Network Neighborhood".
2. Double-click "Entire Network"
3. Double-click "the host name of the SA50".
4. Double-click "NewRecruits".
5. Double-click "Salesperson.doc" to view its contents.

The last configuration under "Basic Setup" is "System Clock". The system clock page allows the user to set the date and time of his/her system clock. It is important to set the system clock to the correct date and time, especially when your Acer Altos SA50 is connected to the network or the Internet. The system date and time may be used by many network services, including email, cache, proxy, and web services. For your

convenience, the system clock page displays times using a 24-hour format. The system clock, on the Altos SA50, is set to "Greenwich Mean Time as default. So in order to set the time to your particular time zone do the following:

## Setting the System Clock

1. Click "System Clock" under "Basic Setup".
2. Under "Time Zone" click on the drop down list and choose the time for your region.
3. Adjust the "Current Date" accordingly, using the drop down list buttons.
4. Adjust "Current Time" accordingly using the drop down list buttons.
5. When finished click "Update".



All file sharing and services will synchronize to this time so make sure it is accurate.

## Managing the SA50 system

### You're Altos SA50 and the role of the system administrator

The system administrator, called the super user, is responsible for maintaining the system and managing the users. The administrator account is created automatically during the installation process of your SA50. By logging in to your computer as the system administrator, you have unlimited privileges; you can add and delete user accounts, change user privileges, access all file, and configure the SA50. As system administrator, there are no restrictions on the functions you can perform to the operating system.

The Advanced Setup, under the System Administration Manager, lets you personalize the look and feel of your Acer Altos SA50. It allows you to perform many infrequent or complex tasks from a single control panel. Most of the services on this page have default settings, and should work properly right out of the box.

Let's go through each of the titles, under Advanced Setup, step-by-step so you have a clear understanding of what the Altos SA50 can do for you.

### Click Connection

The Connection page allows you to activate and configure all the possible connections from your server to the Internet and your local network. To connect to the Internet using a modem and a dial-up connection to an Internet Service Provider (ISP), go to the Modem Internet Connection page. If you have high speed or broadband Internet access, such as an ADSL or cable connection, go to the Other Internet Connection page. Finally, to set up your local network connection, go to the Local Network Connection page.

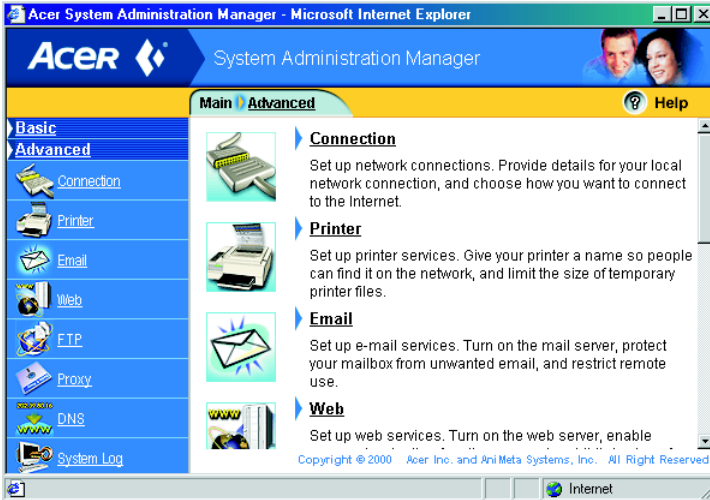
### Click Modem Internet Connection

The Modem Internet Connection page allows you to configure a modem for a dial-up connection to your Internet Service Provider (ISP). When configuring your dial-up connection, you can provide the telephone number, user name and password for your dial-up account. You have to also specify automatic or manual DNS configuration, depending on what is supported or required by your ISP.

## Back to Tom & Jerry Toys

Mike Stanley would like to connect to the Internet, so he asks the network administrator to setup the SA50 to connect to the Internet. However, due to financial constraints Tom & Jerry Toys can only use a dial-up connection for now. So follow the easy steps as he connects to his ISP.

Under System Administration Manager: Click Connection

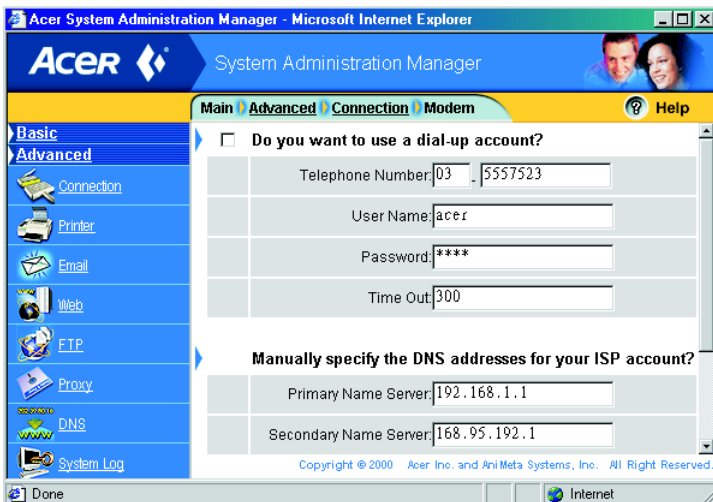




1. Click Modem Internet Connection.



2. Click inside the checkbox beside "Do you want to use a dial-up account?".



3. Under Telephone number type in your ISP connection number



-----

**Note:** The first box is for the area code but it is used very seldom, not to incur extra costs and at many times your service provider is in your local area. If you have a PBX system don't forget to enter the external number, followed by a comma and the dial-up number.

4. In our example we have entered the outside number, followed by a comma and then the number to connect to the ISP.
5. Click in the "User Name" box and type in your username (provided by the ISP).
6. Click in the "Password" box and type in your password (provided by the ISP).
7. Click in the "Time Out" box and type in the number of seconds you wish before the browser disconnects the connection if it cannot access the specific site.



-----

**Note:** Sometimes your ISP will give you the Primary DNS and Secondary DNS numbers. It is time to enter those numbers under Manually specify the DNS addresses for your ISP account.

8. Click Update.



-----

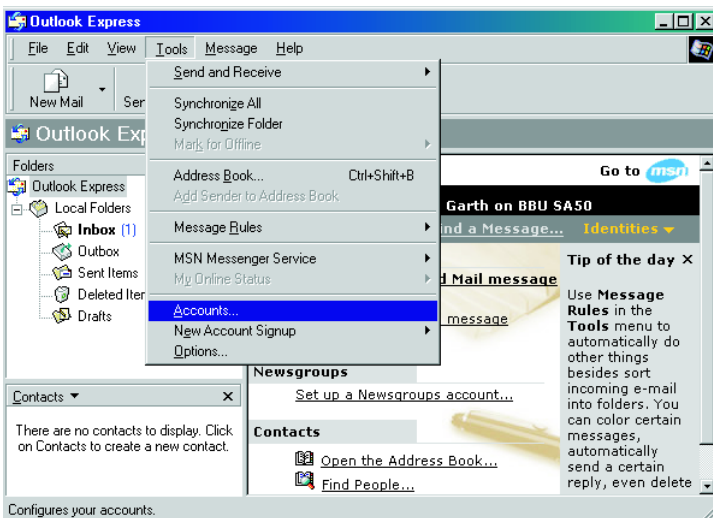
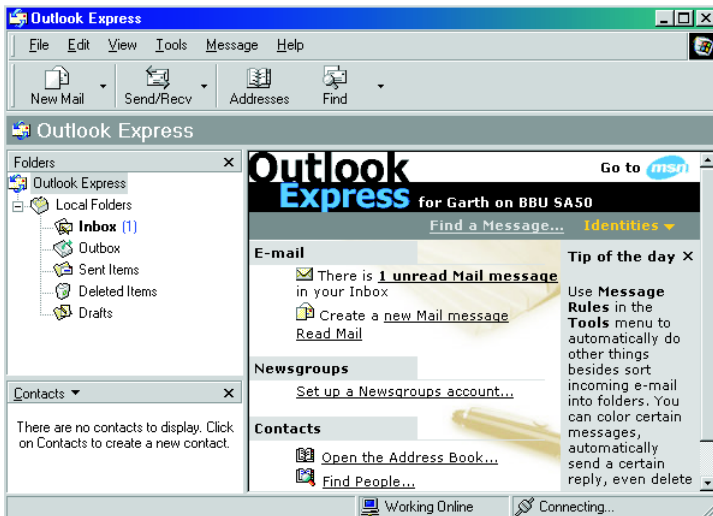
**Note:** Please remember that if you are using the SA50 there is no need to setup Dial-Up Networking. Your client can connect through the Local Area Network.

## Connect to the Internet via a client

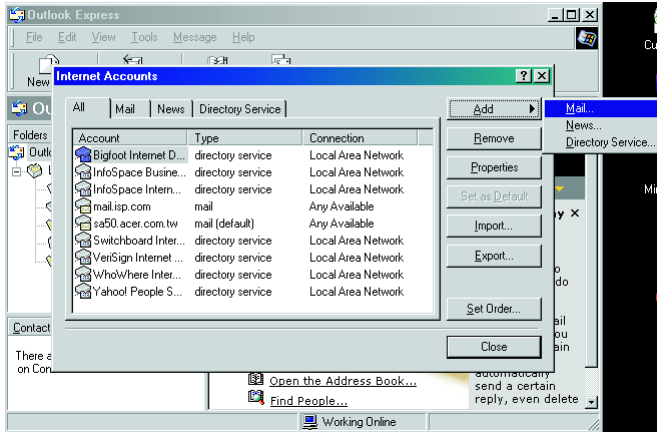
The following description depends on the email client you are using on your client machine but for all intents and purposes we are going to use "Outlook Express" to demonstrate this example. Go to your Windows® client machine and do the following:

1. Click Start, Programs, Outlook Express. If you haven't used Outlook Express before Windows® will automatically start the email wizard

but if the user on the client has already used Outlook Express. In Outlook Express go to Tools, Accounts.



- Then under "Accounts" click "Add", then "Mail".



- A screen will pop up asking you to enter a "Display Name". Enter one and click Next.

**Internet Connection Wizard**

**Your Name**

When you send e-mail, your name will appear in the From field of the outgoing message. Type your name as you would like it to appear.

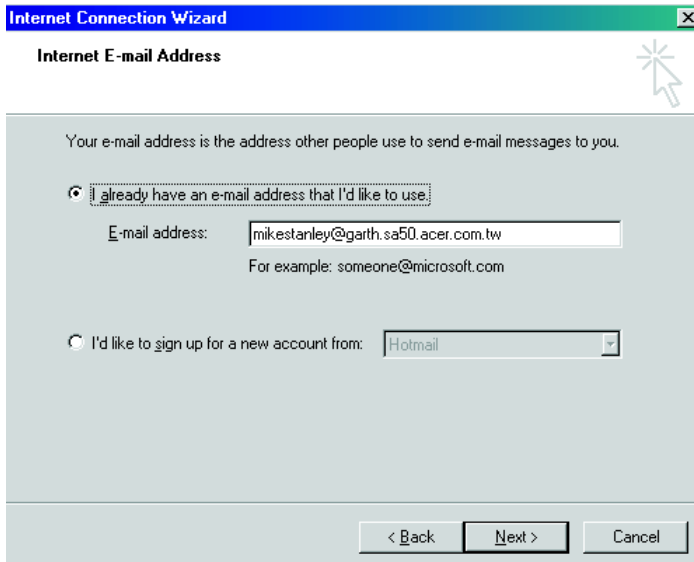
Display name:

For example: John Smith

< Back   **Next >**   Cancel

- The next screen asks you to enter an email address. Here you can enter the email address that your ISP assigned you. In our example

we entered mikestanley@garth.sa50.acer.com.tw but you can use any address you wish.



The screenshot shows a window titled "Internet Connection Wizard" with a close button (X) in the top right corner. The main title is "Internet E-mail Address". Below the title, there is a mouse cursor icon. The main content area has a light gray background and contains the following text: "Your e-mail address is the address other people use to send e-mail messages to you." Below this, there are two radio button options. The first option, "I already have an e-mail address that I'd like to use:", is selected. To its right is a text input field containing "mikestanley@garth.sa50.acer.com.tw". Below the input field is the text "For example: someone@microsoft.com". The second option, "I'd like to sign up for a new account from:", is unselected. To its right is a dropdown menu showing "Hotmail". At the bottom of the dialog, there are three buttons: "< Back", "Next >", and "Cancel".



-----

**Note:** This can only be done if you are using a dial-up connection. Remember to use the email address the ISP assigned you. For example, mikestanley@aol.com.

5. Once complete click Next.

- Under "My incoming mail server is" click on the drop down list to choose POP3, IMAP, or HTTP. If you are unsure of what to do please contact your ISP and ask him/her.

Internet Connection Wizard

E-mail Server Names

My incoming mail server is a  server.

Incoming mail (POP3, IMAP or HTTP) server:

An SMTP server is the server that is used for your outgoing e-mail.

Outgoing mail (SMTP) server:

< Back    Next >    Cancel

- Next enter the information below "incoming mail server" and "outgoing mail server". Your ISP usually provides this information and it looks similar to this "mail.aol.com". But this depends on your service provider so contact him/her for details.

8. Next enter your Name and Password. For security purposes we do not suggest that you click this box but for convenience sake it could be you good.

**Internet Connection Wizard** [X]

**Internet Mail Logon**

Type the account name and password your Internet service provider has given you.

Account name:

Password:

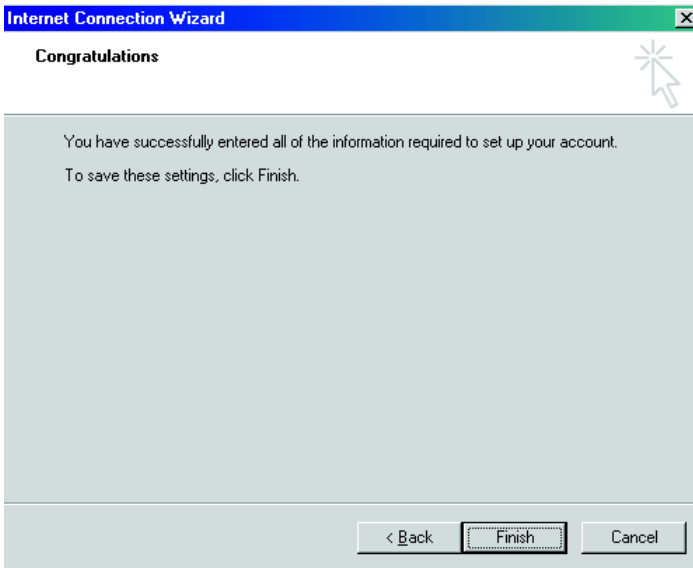
Remember password

If your Internet service provider requires you to use Secure Password Authentication (SPA) to access your mail account, select the 'Log On Using Secure Password Authentication (SPA)' check box.

Log on using Secure Password Authentication (SPA)

< Back    Next >    Cancel

9. Click Next and Finish.



10. Your mail program will either start automatically or you will have to double-click the Outlook Express icon on your desktop. When you do this, your SA50 will automatically dial-up to the server.



.....

**Note:** You will have entered the connection details already if you would like to connect to the Internet.

## Connecting with an ADSL or Cable line

The next step is to go back to Advanced Setup and setup connecting to your ISP with an ADSL or cable connection.

1. Click **Advanced**.
2. Click **Connection**.
3. Click **Other Internet Connection**.



.....

**Note:** When dialing to your ISP, your 56K modem will take precedence over all other connections.



## Other Internet Connection

The Other Internet Connection page allows you to configure a high-speed or broadband connection to your Internet Service Provider (ISP). This includes connections such as ADSL or Cable. When configuring your connection, you can provide the ISP address, subnet mask, gateway, and DNS address (primary and secondary name services) for your ISP account. You can also specify automatic or manual IP and DNS configuration, depending on what is supported or required by your ISP.

You cannot connect using an ADSL or Cable connection if you are using a dial-up connection. You can either disable dial-up connection or disable Other Internet Connection but you cannot use the two together.



.....  
**Note:** If your ISP assigns you an IP address, Subnet Mask and Gateway, don't select the checkbox "Manually specify details for your Internet Connection"

To use an ADSL or Cable Internet Connection click on Other Internet Connection and do the following:

1. Click in the checkbox beside Manually specify details for your Internet connection?
2. If you want to manually configure your ISP address, type the IP address provided by your ISP. Leave it empty if your ISP assigns your IP address automatically.
3. If you want to manually configure your subnet mask, type the subnet mask provided by your ISP. Leave it empty if your ISP assigns your subnet mask automatically.
4. If you want to manually configure your gateway, type the gateway address provided by your ISP. Leave it empty if your ISP assigns your gateway address automatically.
5. If you want to manually configure your DNS service, type the primary and secondary name server addresses provided by your ISP. Leave it empty if your ISP assigns your DNS addresses automatically.
6. When finished click Update.

## Connect to the Internet via a client



.....

**Note:** When dialing to your ISP, your 56K modem will take precedence over all other connections.

The following description depends on the email client you are using on your client machine but for all intents and purposes we are going to use "Outlook Express" to demonstrate this example. Go to your Windows® client machine and do the following:



.....

**Note:** Please refer to pages 53 to 60 for set up of client software.

1. Click Start, Programs, Outlook Express. If you haven't used Outlook Express before Windows® will automatically start the email wizard but if the user on the client has already used Outlook Express do the following: In Outlook Express go to Tools, Accounts.
2. Then under "Accounts", click "Add", then "Mail".
3. A screen will pop up asking you to enter a "Display Name". Enter one and click "Next".
4. The next screen asks you to enter an email address. Here you can enter the mail address that your ISP assigned you. In our example we entered mikestanley@garth.sa50.acer.com.tw but you can use any address you wish.



.....

**Note:** this can only be done if you are using a dial-up connection. Remember to use the email address your ISP assigned you. For example mikestanley@aol.com.

5. Once complete, click Next.
6. Under "My incoming Mail Server is", click on the drop down list to choose POP3, IMAP, or HTTP. If you are unsure of what to do please contact your ISP and ask him/her.
7. Next enter the information below "incoming mail server" and "outgoing mail server". Your ISP usually provides this information and it looks similar to this "mail.aol.com". But this depends on your service provider so contact him/her for details.

8. Next enter your Name and Password. For security purposes we do not suggest that you click this box but for convenience sake it could be good.
9. Click Next and Finish.
10. Your mail program will either start automatically or you will have to double-click the Outlook Express icon on your desktop. When you do this your SA50 will automatically dial dial-up to the server.



.....

**Note:** You will have entered the connection details already if you would like to connect to the Internet. Also remember that a dial-up connection will take precedence over any other settings.

## ▶ Setting up and verifying your Local Area Network

The next step is to go back to Advanced Setup and configuring your local network connection. At the beginning of this manual you have already setup your client to connect to the SA50. Now you are going to verify that setup and setup any other clients you have on the network.

1. Click Advanced
2. Click Connection
3. Click Local Network Connection

### Local Network Connection

The Local Network Connection page allows you to configure a connection to your local network. When configuring your local network connection, you can provide the name of your workgroup and the name of your server. Your server can also provide other network services to computers on your local area network, such as Dynamic Host Configuration Protocol (DHCP) and Network Address Translation (NAT).

In the Local Network Connection page you will see workgroup name. A workgroup is a group of computers that your server belongs to. A workgroup is usually composed of the computers that are most likely to communicate with and that contain the network resources (shared folders and printers) that you want to access. For example a workgroup name could be a department name, so if you're part of the advertising team in the marketing department you can enter "Advertising" in the workgroup name box.

The next step is to enter the computer name. The computer name is the name that you give to your server. The computer name must be unique in your workgroup - you cannot use a name that is already in use by another computer. Seeing that this is the Altos SA50, it would be simple to name the computer "SA50".

Next you will notice that it asks you to "Specify details for your LAN connection". These details should be in place seeing that you already did this at the beginning of your server setup.



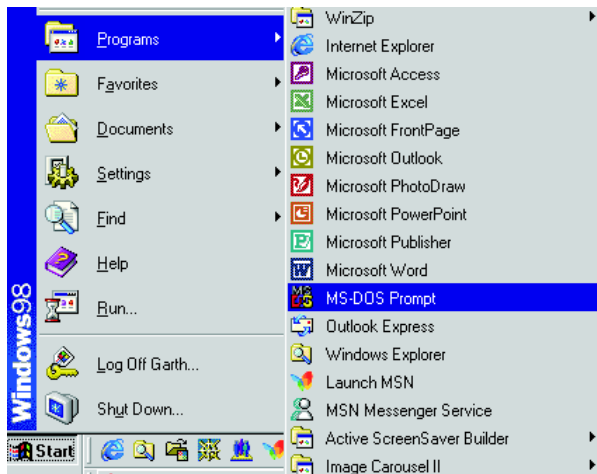
**Note:** The following tasks should already be in place as you did it during the beginning stages of "Setup". To verify the details under "Enable DHCP" follow and read the steps below.

The last task on this page is to check the box next to "Enable DHCP". It will then prompt you to enter a starting IP address, an Ending IP address and Lease Time. Once you are complete click Update.

## Confirming client connectivity

To verify that all your clients are communicating with the SA50, do the following:

1. Make sure all clients are connected to the SA50 via the same hub.
2. Restart all clients so that they can obtain an IP address from the SA50.
3. Once your clients have restarted.
4. Click Start, Programs, MS-DOS Prompt.



- At the prompt type "ipconfig (press spacebar)/all".

```

MS-DOS Prompt
Auto
IP Address. . . . . : 0.0.0.0
Subnet Mask . . . . . : 0.0.0.0
Default Gateway . . . . . :
DHCP Server . . . . . : 255.255.255.255
Primary WINS Server . . . . . :
Secondary WINS Server . . . . . :
Lease Obtained. . . . . :
Lease Expires . . . . . :

1 Ethernet adapter :
Description . . . . . : Realtek 8139-series PCI NIC
Physical Address. . . . . : 00-60-67-71-81-66
DHCP Enabled. . . . . : Yes
IP Address. . . . . : 192.168.3.71
Subnet Mask . . . . . : 255.255.255.0
Default Gateway . . . . . : 192.168.3.1
DHCP Server . . . . . : 192.168.3.1
Primary WINS Server . . . . . :
Secondary WINS Server . . . . . :
Lease Obtained. . . . . : 09 14 00 10:36:48 AM
Lease Expires . . . . . : 09 15 00 10:36:48 AM

C:\WINDOWS>

```

At this point you will see all the clients connected to your SA50 and their respective IP addresses. To verify the IP addresses you can "ping" all of them separately.

## Setting up the Printer

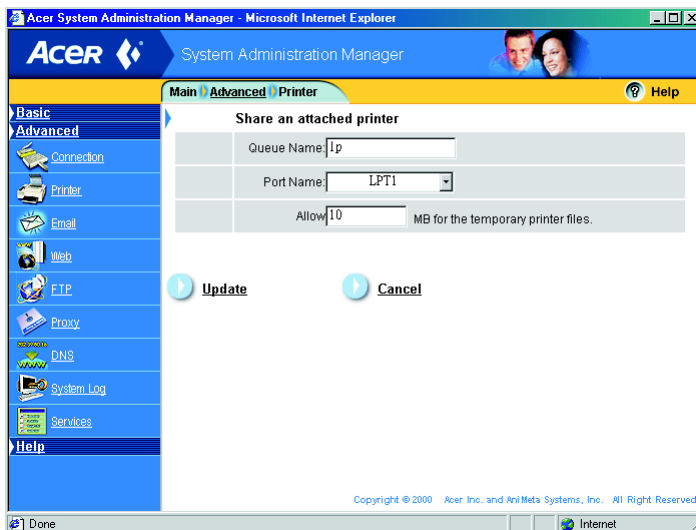
Before you can print using your SA50, you must set up a printer. When you print a file from your client, you can only choose a printer that has been added to your SA50. Use the Printer wizard to add a network printer to

your SA50. When you add a network printer, you must specify the queue name, port name and printer spooling size.



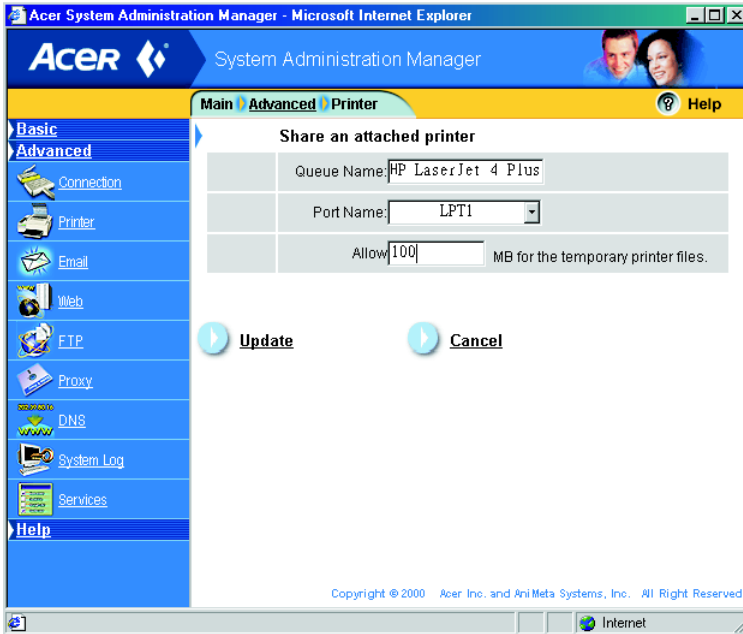
To enable printer sharing:

1. Click Printer under Advanced.



2. Under "Share an attached printer", you will notice "Queue Name". Actually this name can best be translated as Printer Name.

3. Enter any name you wish or the name of your printer.
4. Under "Port Name", click on the drop down list and look for "LPT1".



5. Under "Allow" enter the number of megabytes you wish to allow for temporary printer files.
6. Click Update.



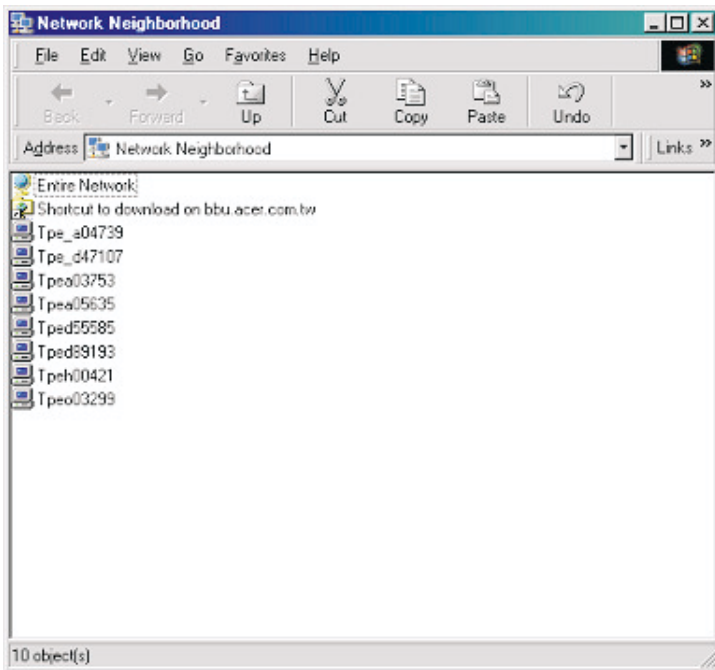
-----

**Note:** It is important to note that the last box gives the administrator privileges to control the size of the spooler. It would be impossible to accurately determine if all users connect to the printer at once. This figure is hard to determine so at best it would be good to enter a large amount. A large amount will not crash the server or users trying to print jobs.



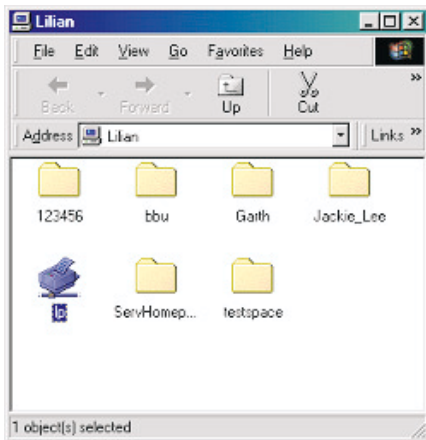
## Connect to your shared printer

1. Under Windows®, click Network Neighborhood.

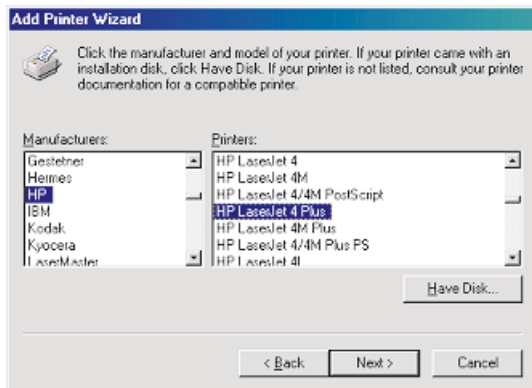


2. Find the SA50 on your network and Double-click the icon.

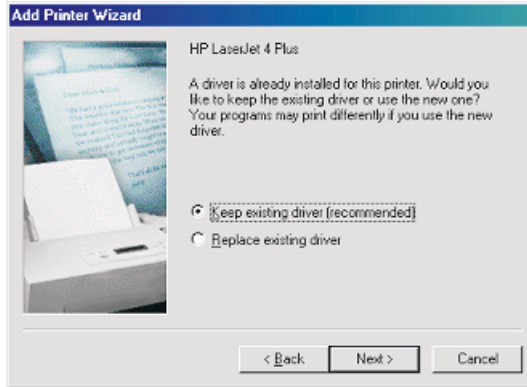
- Once you have entered the SA50 look for the Printer icon and double-click it.



- You will be prompted to install a printer driver.
- Click Yes and follow the Printer wizard to setup the printer.



If you have already setup a printer on your client computer it will ask you to keep the same driver. However, if you have a new printer click have disk and use the driver (floppy) provided by the printer driver.



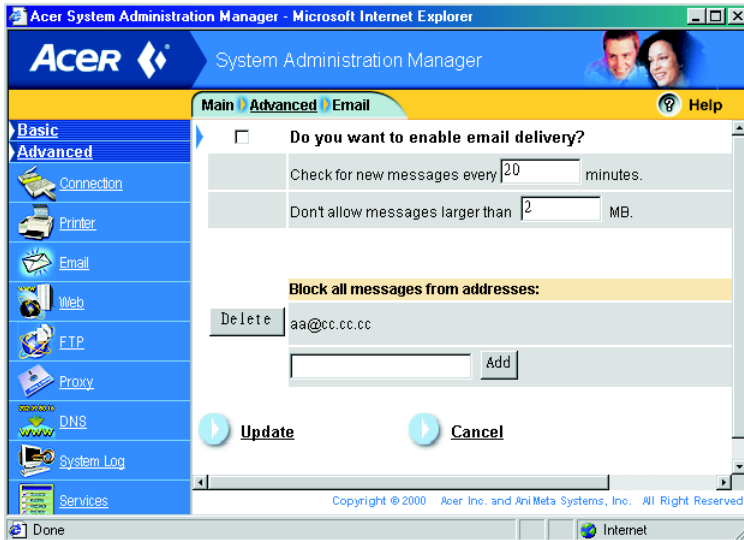
6. Click Next. The next few screens ask you to confirm your printer selection. When you finish setup, your printer will print out a test page.

## Setting up Email

On the Email page you can set up your server to act as an Internet email server for users in your workgroup. Anyone who wishes to use the email service provided by your server must have a user account. Once they have a user account they can use any Internet email client to connect to your server and retrieve email. You can also enable the email security filter to make your server more secure by filtering out unwanted emails. The box "Check for new messages" indicates how often the server transmits email. The figure-entered (this could be between 1-999 minutes)checks to see how often the server transmits users email. Email larger than the maximum message size will be deleted from the server. The email service must be enabled before you can enable or disable the email security filter.

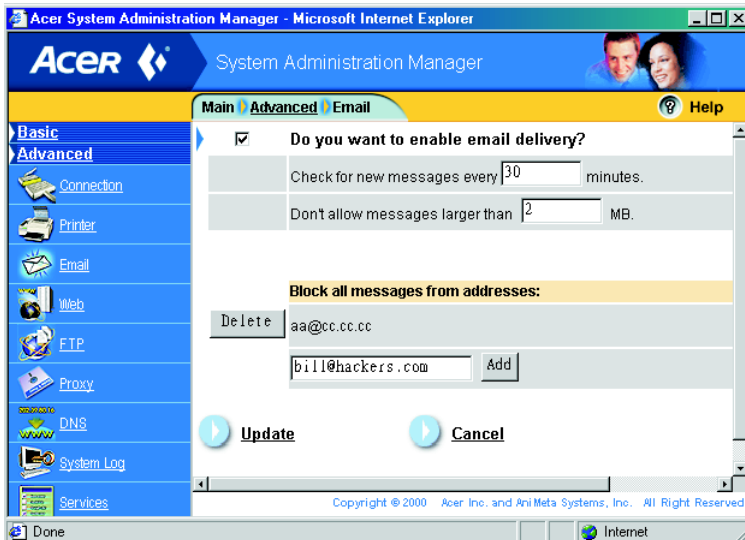
To enable the email service, do the following:

1. Click the checkbox beside "Do you want to enable email delivery?".



2. If you have an ADSL or Cable connection, specify how many minutes the SA50 should transmit email to the email server on the Internet. If you have a dial-up connection this method will be costly and inconvenient.
3. Enter the minutes you want to specify.

- Under "Don't allow messages larger than" type the file size of each mail message that the SA50 retrieves or transmits to the ISP.



- Enter between 1MB to 3MB depending on preferences.

The next step is to set up the security filter. Here you can specify which email addresses you wish to block. This could be spam or email addresses that carry viruses. For example, you can block bill@hackers.com. When this email address is added, email from this user is denied. However, you need to enable your DNS service first under "DNS" otherwise you will have an error diagram showing as in

- Enter an email address or addresses and click Add. You will notice a list of all the "denied" email addresses.
- When complete click Update.

## Setting up a Web Server



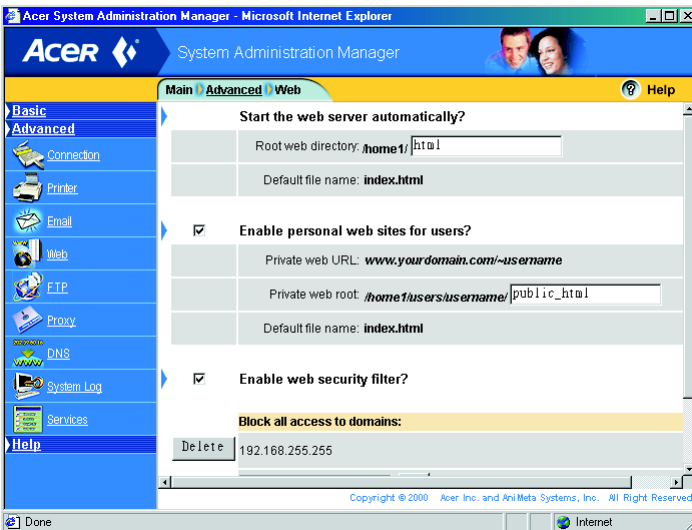
**Note:** The default setting for the web folder is "ServHomepages". This directory can be found in the "/home1/html" directory.

On the web page you can set up your server to act as a Web server for users in your workgroup. You can set up the Web service so that it

provides a public Web site that only users with administrator access can modify, or so that it also provides personal Web pages for users.

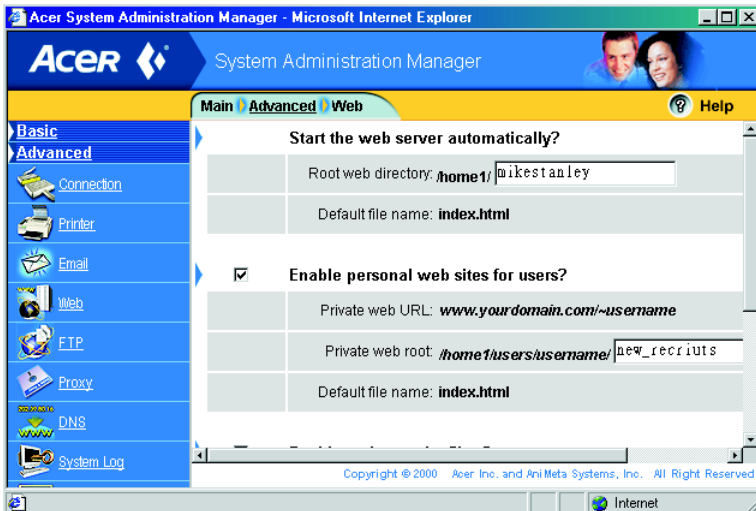
The default file names can be up to 999 characters in length, and may contain numbers, letters, and the underscore character. The Personal Web publishing service must be enabled before you can enable or disable personal Web sites for users. To set up a web server on your Altos SA50 do the following:

1. In the box next to "Root web directory: /home1/" type the name of the file where all the web content will reside.



2. The default document name for the Web server is "index.html". It is important that when you are creating your web site that you name your first and major site "index.html". Once you have created this page make sure you create a link to all pages so that your web site is fully functional.

3. Click in the box next to "Enable personal web sites for users" if you want each employee to have a web site.



4. In the box to the right of "Private web root: //home1/users/username" type the username directory. For example, if a user wants to upload to his/her web site they would use this folder
5. Next click in the box next to "Enable web security filter". This ensures that certain addresses for this particular user cannot be accessed.

## Uploading your web site to the SA50

The SA50 gives users the opportunity to use any web site tool to create or edit any web sites on the SA50. All users need to do is create their web site either using Front Page or Dreamweaver (other programming tools are at the users discretion), then do the following:

1. Make sure that all your web pages are linked to "index.html". If you do not have this file, create it and link your various "HTML" pages to it.
2. Ask the administrator of your SA50 to make sure that s/he has created a web folder for you on the SA50.
3. The default web folder is "ServHomepage".
4. Copy all your "HTML" pages, then paste them to "ServHomepages".



**Note (Administrator's use):**In order to check to see if there are any data in the folder, FTP you're SA50 in MS-DOS. Go to the /home1/html" directory and here you will see all the web files.

## Connecting to your Personal Web Server

1. Open your browser on your Windows® client
2. In the address type, www.(the name you gave your SA50 server Remember, only type www if the user has a registered domain address). com/~username. Please remember that the "www" extensions are only used if you registered your site publicly. Otherwise, you can just use your domain name at the beginning of your address.
3. Press "Enter" on your keyboard and the browser will automatically go to website of that user.

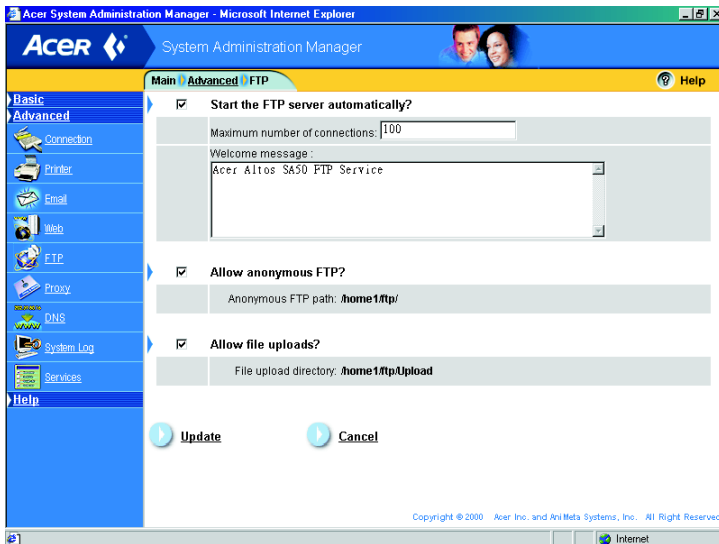
## Setting up FTP

File Transfer Protocol (FTP) is a method of sharing files on the Internet. On the FTP page you can set up your server to act as an FTP server for users in your workgroup. You can set up the FTP service so that only users with an account on your server can access it, or for anonymous access so that anyone who can connect to your server can use it. The maximum number of connections is 999. The maximum length of the welcome message is 999 characters. The FTP service must be enabled before you can enable or disable anonymous FTP access. To set up the FTP service, do the following:

1. Click Advanced.



## 2. Click FTP.



3. Click in the checkbox next to "Start the FTP server automatically" if you want to enable the FTP server.
4. Type in the maximum number of connections at one time in the box to the right of "Maximum number of connections".
5. Type in the welcome message that you want users to see when they first connect to the FTP server.
6. Click in the box to the left of "Allow anonymous FTP" if you wish users who do not have a user account to access the FTP server. When you access the SA50 anonymously you will use "anonymous" as the username, and your email address or just the "Enter" keystroke on the keyboard. However if you enter your username, like the one you used for the SA50, then you would have to use the password that you were assigned.



.....

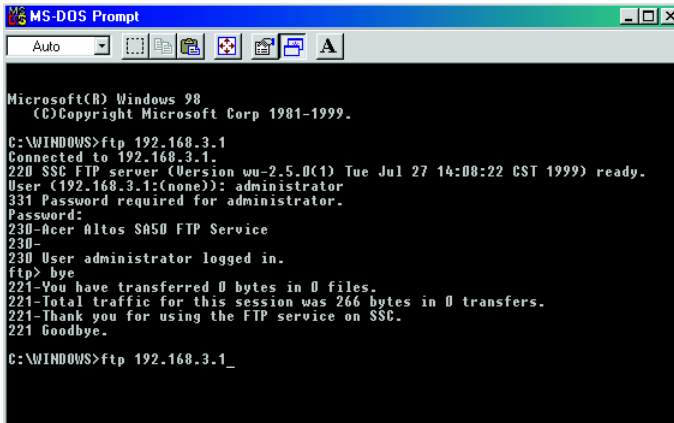
**Note:** For security purposes it would be best to leave this box unchecked.

7. Click in the box to the left of "Allow file uploads" if you wish users to upload files to the FTP server.
8. When complete click Update.

## Connecting to the FTP Server

To connect to the FTP server from your Windows® client, do the following:

1. Click Start, select Programs, MS-DOS Prompt.



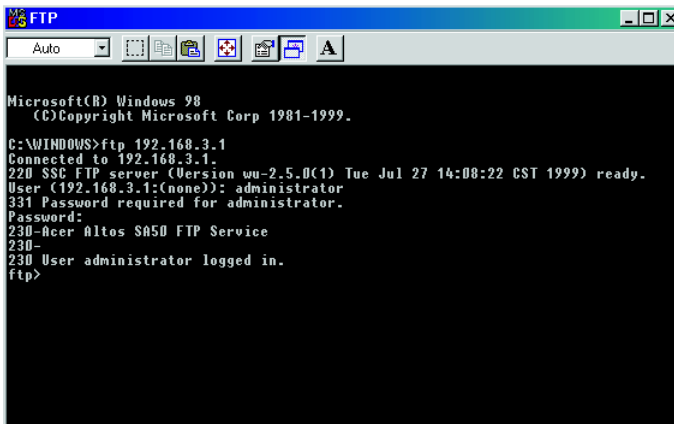
```

Microsoft(R) Windows 98
(C)Copyright Microsoft Corp 1981-1999.

C:\WINDOWS>ftp 192.168.3.1
Connected to 192.168.3.1.
220 SSC FTP server (Version wu-2.5.0(1) Tue Jul 27 14:08:22 CST 1999) ready.
User (192.168.3.1:(none)): administrator
331 Password required for administrator.
Password:
230-Acer Altos SA50 FTP Service
230-
230 User administrator logged in.
ftp> bye
221-You have transferred 0 bytes in 0 files.
221-Total traffic for this session was 266 bytes in 0 transfers.
221-Thank you for using the FTP service on SSC.
221 Goodbye.

C:\WINDOWS>ftp 192.168.3.1_
  
```

2. Type, ftp (space) (the name you gave your SA50 with the dot com extension) or the IP address, then press Enter.



```

Microsoft(R) Windows 98
(C)Copyright Microsoft Corp 1981-1999.

C:\WINDOWS>ftp 192.168.3.1
Connected to 192.168.3.1.
220 SSC FTP server (Version wu-2.5.0(1) Tue Jul 27 14:08:22 CST 1999) ready.
User (192.168.3.1:(none)): administrator
331 Password required for administrator.
Password:
230-Acer Altos SA50 FTP Service
230-
230 User administrator logged in.
ftp>
  
```

3. Type the username (for the person who is controlling the SA50 the username should be "administrator"), followed by password, which should be "admin".



**Note:** If you are connecting "anonymously" you will have to type anonymous as the username and your email address as the password. This email address could be any email address but a user will have certain restrictions.

## Uploading in MS-DOS Prompt on the client

1. Click Start, Programs, MS-DOS Prompt.
2. Then type ftp (space) (the name you gave your SA50 with the dot com extension), then press Enter.
3. You 'de be prompted to enter the username and password.
4. Under username type "anonymous", press Enter.
5. Under password type "your email address", press Enter.
6. Then type "cd (space) Upload", (Remember that the SA50 is case-sensitive) and press Enter.
7. Then type "put (space) (the full path of your file(s) on your local computer and press Enter.
8. To verify that this is done type "dir" and you should be able to see the file(s).

## Downloading in MS-DOS Prompt on the client

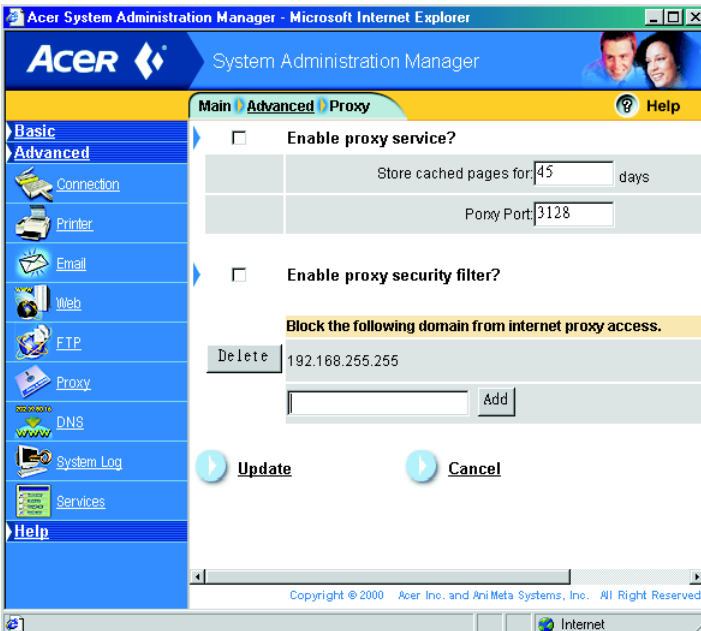
1. Click Start, Programs, MS-DOS Prompt.
2. Then type ftp (space) (the name you gave your SA50 with the dot com extension), then press Enter.
3. You'd be prompted to enter the username and password.
4. Under username type "anonymous", press Enter.
5. Under password type "your email address", press Enter.
6. Then type "cd (space) pub", (Remember that the SA50 is case-sensitive) and press Enter.
7. Then type "get (space) (filename) on your local computer and press Enter.
8. To verify that this is done type "dir" and you should be able to see the file(s).

## Setting up Proxy

On the Proxy page you can set up your server to act as an Internet proxy server for users. This allows your server to store frequently accessed pages locally, and to block specific computers from accessing the Internet. The maximum number of days to store cached pages is 999 days.

To enable the Proxy server, do the following:

1. Click in the box to the left of "Enable proxy service".



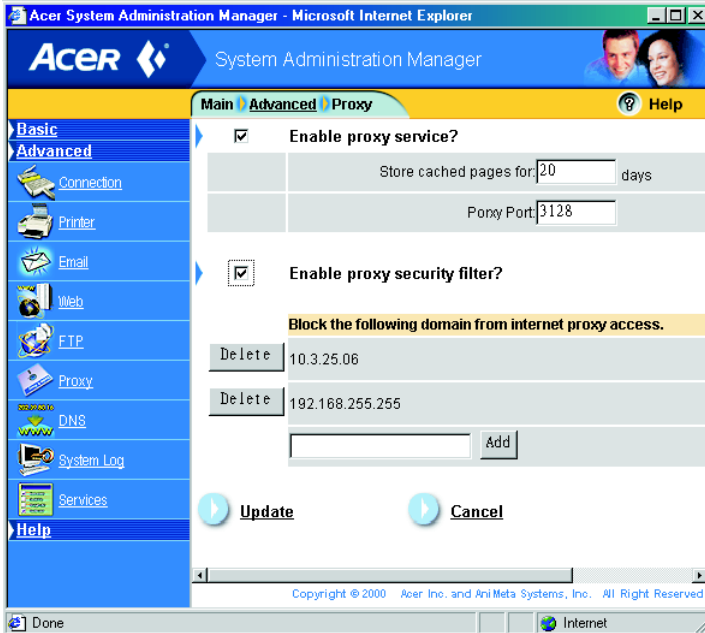
2. Click in the box to the right of "Store cached pages for" and type the number of days you want to keep frequently requested pages on the server for.
3. Click in the box to the right of "Proxy Port" and type the port you are using for this purpose.



**Note:** The port you have just typed in is important to remember, as clients on the network need it to connect to the Internet. Another key

point is that the port number has to be within this range: 1024 to 65535.

4. Click in the box to the left of "Enable proxy security filter", if you want proxy security.



5. Then click in the box to the left of "Add" to filter those addresses that you do not want users to access.

Here you can enter the domain address or web address. Click Update to finish.

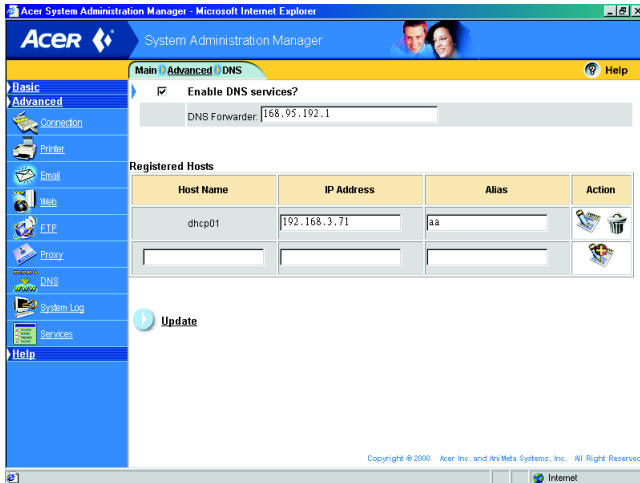
## Setting up DNS

On the DNS page you can set up your server to act as a domain name server for users in your workgroup. Anyone who wishes to use the DNS service provided by your server must specify the server as his or her DNS server. Once a computer on your local area network is added to the registered host list, name lookups from your local network will find that computer. The DNS forwarder is the computer that sends updates from the central DNS database to your server. The registered hosts are

computers on your network that have their names added to your local DNS database. You can add new registered hosts regardless of whether the DNS service is enabled or disabled, but name lookups will fail to find that host if the DNS service is disabled. You can only delete one registered host at a time.

To enable the DNS service:

1. Click in the box to the left of "Enable DNS service".



2. Click in the box to the right of "DNS Forwarder" then type in the IP address.
3. Click Update.
4. Add new hosts to the registered hosts list.

To disable the DNS service:

1. Clear the checkbox beside "Enable DNS" services.
2. Click Update.

To add a registered host:

1. On the DNS page, modify the host properties for the computer you want to add in the last line of the Registered Hosts table.
2. Click Add.

To modify a registered host:

1. On the DNS page, modify the host properties you want to change.
2. Click the Edit button on the Action column of the host you modified.

To remove a registered host, on the DNS page, click the trash button in the Action column of the registered host you no longer want.

## System Log-Viewing events on your server

The System Log page displays all system errors and events, as well as network service errors. This allows you to quickly diagnose errors within the system itself, or with one of the network services.

### Refreshing the system log

Changes are made to the system log continuously, but the System Log page only shows a "snapshot" of this information as it existed when the page was displayed. To view the current contents of the system log, you need to click the Refresh button. This only updates the display on the System Log page, and does not make any changes to the system log itself.

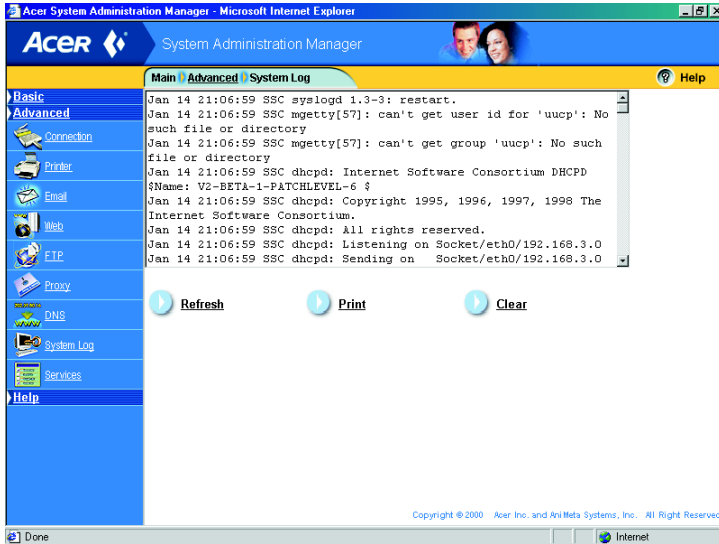
### Printing the System Log

You may want to print the system log for troubleshooting or future reference. This will only work if you have a printer attached to your server that has been properly set up. If the printer is not set up, you can set it up on the Printer Configuration page (in the Advanced section). To print the system log, click Print.

### Clearing the system log

When the system log becomes very long, it becomes difficult to notice when new messages appear in the log. The easiest way to solve this

problem is to clear the log from time to time. To clear the system log, click Clear.



**Note:** This clears the entire contents of the system log.



## Services

The system Services page lets you see which services are currently enabled and disabled. To enable or disable any of the system services, simply go to the page for that service and fill in the appropriate information. Web, File Sharing, and Print Sharing are services that are default and they cannot be altered. The other items on the page can be altered. "Enable" means that you can use the service and "Disable" means you can't use the service.



## Services explained

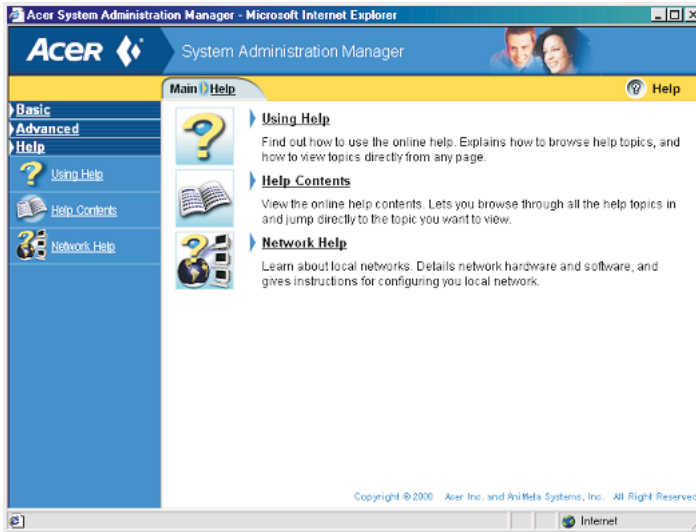
File Sharing and Printer Sharing are by default always on the system. Therefore, there is not disable/enable button. A green icon to the left of the service indicates the service is "Disabled" and a red button indicates the service is "Enabled".



**Note:** The administrator has the right to shutdown the SA50 in "Services".

## Help

"Help" gives users an online guide to common problems they might face.



### Help explained

Help has three main categories:

- Using Help
- Help Contents
- Network Help

### Using help

This category explains how to use help and teaches users basic SA50 concepts.

### Help contents

Help Contents categorizes the content of the user manual in a friendly, easy-to-use directory

## Network help

If users are unfamiliar with a network, Network Help explains common network definitions and terminology

## Product specifications

### Performance

- Socket 370 processor supports the following CPU:
- Intel® Celeron™ (PPGA - Plastic Pin Grid Array) processor with built-in 256K L2 cache
- Intel® Pentium® III (FC-PGA - Flip-Chip Pin Grid Array) processor with 256K of Advanced Transfer Cache (front side bus of 100 and 133 MHz supported)
- SiS630 controller chipset
- 64 MB of system memory
- High-capacity, Enhanced-IDE hard disk with Data Mirroring ability (optional 2nd hard drive needed)

### Connectivity

- One PCI adapter for 16 MB embedded Linux DOC (Disk on Chip technology)
- One serial port and one parallel port
- Two integrated 10Base-T/100Base-TX network connections
- 56K external modem

### Software services

- Linux 2.x multitasking operating system
- Setup wizard
- Web publishing
- Web-based administration
- Email services
- Network Address Translation (IP sharing)
- File sharing between Windows NT, Windows 95, and Mac OS (3rd-party Mac utility required)
- Printer sharing
- Proxy services

- File Transfer Protocol (FTP)

## Taking care of your server

Please read the important instructions listed in this section. Following these instructions will help you maximize the durability of your server.

### Important tips

- Do not expose the server to direct sunlight. Do not place it near sources of heat, such as a radiator.
- Do not subject the server to magnetic fields.
- Do not expose the server to rain or moisture.
- Do not spill water on the server.
- Do not subject the server to heavy shock or vibration.
- Do not expose the server to dust and dirt.
- Never place the server on uneven surfaces.
- Do not step on the power cord or place heavy objects on top of it. Carefully route the power cord and any cables away from personal traffic.
- When unplugging the power cord, do not pull on the cord itself but pull on the plug.
- The total ampere rating of the equipment plugged in should not exceed the ampere rating of the cord if you are using an extension cord. Also, the total current rating of all equipment plugged into a single wall outlet should not exceed the fuse rating.

### Cleaning and servicing

To clean your server:

1. Turn off the server and unplug the power cord.
2. Use a soft cloth moistened with water and gently wipe the exterior of the server. Do not use liquid or aerosol cleaners.

### When to contact a service technician

- If you dropped and damaged the server.
- If liquid has been spilled into the server.
- If the server is not operating normally.

# Notices

## FCC notice

This device has been tested and found to comply with the limits for a Class B digital device pursuant to Part 15 of the FCC Rules. These limits are designed to provide reasonable protection against harmful interference in a residential installation. This device generates, uses, and can radiate radio frequency energy and, if not installed and used in accordance with the instructions, may cause harmful interference to radio communications.

However, there is no guarantee that interference will not occur in a particular installation. If this device does cause harmful interference to radio or television reception, which can be determined by turning the device off and on, the user is encouraged to try to correct the interference by one or more of the following measures:

- Reorient or relocate the receiving antenna
- Increase the separation between the device and receiver
- Connect the device into an outlet on a circuit different from that to which the receiver is connected
- Consult the dealer or an experienced radio/television technician for help

### **Notice: Shield cables**

All connections to other computing devices must be made using shielded cables to maintain compliance with FCC regulations.

### **Notice: Peripheral devices**

Only peripherals (input/output devices, terminals, printers, etc.) certified to comply with the Class B limits may be attached to this equipment. Operation with noncertified peripherals is likely to result in interference to radio and TV reception.



.....  
**Caution!** Changes or modifications not expressly approved by the manufacturer could void the user's authority, which is granted by the Federal Communications Commission, to operate this computer.

**Use conditions**

This part complies with Part 15 of the FCC Rules. Operation is subject to the following two conditions: (1) this device may not cause harmful interference, and (2) this device must accept any interference received, including interference that may cause undesired operation.

**Notice: Canadian users**

This Class B digital apparatus meets all requirements of the Canadian Interference-Causing Equipment Regulations.

**Remarque à l'intention des utilisateurs canadiens**

Cet appareil numérique de la classe B respecte toutes les exigences du Règlement sur le matériel brouilleur du Canada.

## Important safety instructions

Read these instructions carefully. Save these instructions for future reference.

1. Follow all warnings and instructions marked on the product.
2. Unplug this product from the wall outlet before cleaning. Do not use liquid cleaners or aerosol cleaners. Use a damp cloth for cleaning.
3. Do not use this product near water.
4. Do not place this product on an unstable cart, stand, or table. The product may fall, causing serious damage to the product.
5. Slots and openings in the cabinet and the back or bottom are provided for ventilation; to ensure reliable operation of the product and to protect it from overheating, these openings must not be blocked or covered. The openings should never be blocked by placing the product on a bed, sofa, rug, or other similar surface. This product should never be placed near or over a radiator or heat register, or in a built-in installation unless proper ventilation is provided.
6. This product should be operated from the type of power indicated on the marking label. If you are not sure of the type of power available, consult your dealer or local power company.



7. Do not allow anything to rest on the power cord. Do not locate this product where persons will walk on the cord.
8. If an extension cord is used with this product, make sure that the total ampere rating of the equipment plugged into the extension cord does not exceed the extension cord ampere rating. Also, make sure that the total rating of all products plugged into the wall outlet does not exceed the fuse rating.
9. Never push objects of any kind into this product through cabinet slots as they may touch dangerous voltage points or short out parts that could result in a fire or electric shock. Never spill liquid of any kind on the product.
10. Do not attempt to service this product yourself, as opening or removing covers may expose you to dangerous voltage points or other risks. Refer all servicing to qualified service personnel.
11. Unplug this product from the wall outlet and refer servicing to qualified service personnel under the following conditions:
  - a. When the power cord or plug is damaged or frayed
  - b. If liquid has been spilled into the product
  - c. If the product has been exposed to rain or water
  - d. If the product does not operate normally when the operating instructions are followed. Adjust only those controls that are covered by the operating instructions since improper adjustment of other controls may result in damage and will often require extensive work by a qualified technician to restore the product to normal condition.
  - e. If the product has been dropped or the cabinet has been damaged
  - f. If the product exhibits a distinct change in performance, indicating a need for service.
  - g. Replace the battery with the same type as the product's battery we recommend. Use of another battery may present a risk of fire or explosion. Refer battery replacement to a qualified serviceman.

12. Warning! Batteries may explode if not handled properly. Do not disassemble or dispose of them in fire. Keep them away from children and dispose of used batteries promptly.
13. Use only the proper type of power supply cord set (provided in your accessories box) for this unit. It should be a detachable type: UL listed/CSA certified, type SPT-2, rated 7A 125V minimum, VDE approved or its equivalent. Maximum length is 15 feet (4.6 meters).

## Year 2000 Compliance Statement

This product is Year 2000-compliant and carries the “NSTL Hardware Tested Year 2000 Compliant” logo. This product has been tested both by Acer’s internal test labs and NSTL using NSTL’s YMARK2000 certification test. These tests certify that this product will successfully make the year 2000 transition.



For more details, check the Acer Year 2000 Resource Center at <http://www.acer.com.tw/service/y2k/>

## Lithium battery statement

### **CAUTION**

Danger of explosion if battery is incorrectly replaced. Replace only with the same or equivalent type recommended by the manufacturer. Discard used batteries according to the manufacturer’s instructions.

### **ADVARSEL!**

Lithiumbatteri - Eksplosionsfare ved fejlagtig håndtering. Udskiftning må kun ske med batteri af samme fabrikat og type. Léver det brugte batteri tilbage til leverandøren.

### **ADVARSEL**

Eksplosjonsfare ved feilaktig skifte av batteri. Benytt samme batteritype

eller en tilsvarende type anbefalt av apparatfabrikanten. Brukte batterier kasseres i henhold til fabrikantens instruksjoner.

**VARNING**

Explosionsfara vid felaktigt batteribyte. Använd samma batterityp eller en ekvivalent typ som rekommenderas av apparatillverkaren. Kassera använt batteri enligt fabrikantens instruktion.

**VAROITUS**

Päristo voi räjähtää, jos se on virheellisesti asennettu. Vaihda paristo ainoastaan laitevalmistajan suosittelemaan tyyppiin. Hävitä käytetty paristo valmistajan ohjeiden mukaisesti.

**VORSICHT!**

Explosionsgefahr bei unsachgemäßen Austausch der Batterie Ersatz nur durch denselben oder einem vom Hersteller empfohlenem ähnlichen Typ. Entsorgung gebrauchter Batterien nach Angaben des Herstellers.

