

Acer Advanced MP3 Player

User Manual

acer

Copyright

Copyright 2004 by Acer Inc., All rights reserved. No part of this publication may be reproduced, transmitted, transcribed, stored in a retrieval system, or translated into any language or computer language, in any form or by any means, electronic, mechanical, magnetic, optical, chemical, manual or otherwise, without the prior written permission of Acer Computer GmbH

Disclaimer

Acer Inc. makes no representations or warranties, either expressed or implied, with respect to the contents hereof and specifically disclaims any warranties, merchantability or fitness for any particular purpose. Any software described in this manual is sold or licensed "as is". Should the programs prove defective following their purchase, the buyer (and not this company, its distributor, or its dealer) assumes the entire cost of all necessary servicing, repair, and any incidental or consequential damages resulting from any defect in the software. Further, Acer Computer GmbH, reserves the right to revise this publication and to make changes from time to time in the contents hereof without obligation to notify any person of such revision or change.

All brand and product names mentioned in this manual are trademarks and/or registered trademarks of their respective holders.

CONTENT

1	Introduction	2
1.1	Product overview	2
1.2	Package contents	2
1.3	The characters of Acer Advanced MP3 Player	2
1.4	The index parameter	3
1.5	The system requirement of Acer Advanced MP3 Player	3
2	Installation guide of Acer Advanced MP3 Player	3
2.1	Windows 98 operation system	3
2.2	Windows Me/2000/XP operation system	5
2.3	MAC OS 9.X operation system	7
2.4	Linux 2.4 core operation system	7
3	Uninstall Acer Advanced MP3 Player	7
3.1	Uninstall in windows 98	7
3.2	Uninstall in windows Me/2000/XP	8
3.3	Uninstall in MAC OS 9.X	9
3.4	Uninstall in Linux 2.4	9
4	Functions and guide	9
4.1	Power On/OFF	9
4.2	Playing music files	9
4.3	Repeat mode control	10
4.4	EQ mode	10
4.5	A—B replay	10
4.6	Volume control	11
4.7	Hold function	11
4.8	Main menu	11
4.9	System setting menu	12
4.10	Voice recording	13
4.11	Voice playing	14
4.12	How to display the lyric synchronously	14
4.12.1	How to make lyric file	14
4.12.2	Lyric file display	15
4.13	Software using	15
4.13.1	Use the software to format your computer	16
4.13.2	Use the sound converter tool	16
5	Manage your MP3 Player	16
6	Safety Precaution	17
7	FAQ	18

1 Introduction

1.1 Product Overview

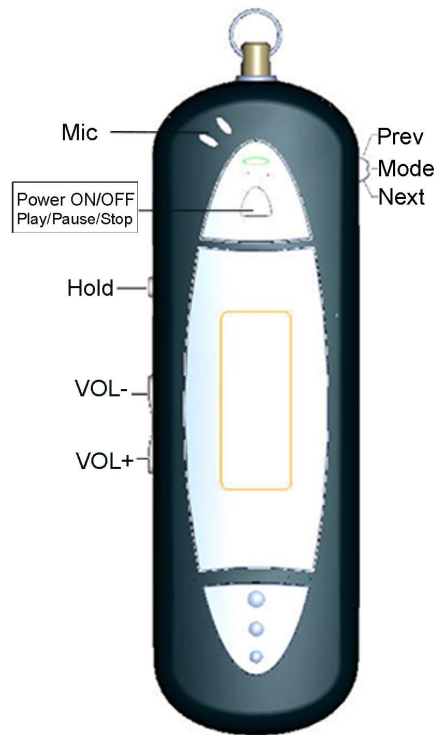
Hold switch: for holding all function keys

Volume -: for down the volume

Volume +: for up the volume

Power ON / Play / Pause / Stop / Power OFF key : for Power ON / Play / Pause / Stop / Power OFF control

Prev /mode / Next key: the key for enter menu and for next&prev select.



1.2 Package Contents

The package should include the following accessories. Please contact the dealer if any of the listed items are missing from the package.

- Acer Advanced MP3 Player
- QSG
- AAA battery
- Neck strap type Earphones
- Installation CD

1.3 The Characters of Acer Advanced MP3 Player

Your Acer Advanced MP3 player is a multi-functional with high sound quality and low power consumption.

Main feature contented:

- ◆ Support MP3, WMA files playing.
- ◆ Support lyric synchronously display.
- ◆ Can update the firmware freely via the USB interface.
- ◆ Support 7 EQ modes
- ◆ Support long time voice recording and VOX recording.
- ◆ Support changing the contrast and EL display time of LCD displaying.
- ◆ Can be used as a mass storage device.
- ◆ Support series play modes and A-B replaying.
- ◆ Can resume the playing state before turn off.

1.4 The index parameter

Index	Parameter specification
Hard disk	IBM PC, compatible PC, notebook with USB interface
Interface	Universal Serial Bus 1.0/1.1 (USB 1.0/1.1)
Storage medium	Flash EMS memory
Power	Supply by USB interface without connect power, when play songs, need 1xAAA
Transfer speed	Max. Writing: 600KB/S, Max. Reading: 800 KB/S
Operation System	Windows98/Me/2000/XP, MAC OS 9.x, Linux2.4 Core
Earphone Output	16 ohm earphone, 10mW + 10mW output
Record Time	Max 17 hours, 128M
Bit Rate Support	MPEG1 Layer1: 32K-448K bps; MPEG1 Layer2: 32K-384K bps; MPEG1 Layer3: 32K-320K bps; MPEG2/2.5 Layer1: 32K-256K bps; MPEG2/2.5 Layer2: 8K-160K bps; MPEG2/2.5 Layer3: 8K-160K bps;
Capacity	64MB/128MB/256MB
LCD Display	96 × 26 dots
Operating Conditions	-20°C ~ +40°C
Common Conditions	-40°C ~ +60°C
Size	96.5mmx30mmx21mm
Life-span	Writing over one million times, reading doesn't influence the life; data can be stored over ten years
Driver	Installation only be needed under Windows98, other operation systems don't need to install, such as Windows Me, Windows 2000 and above

1.5 The system requirement of Acer Advanced MP3 Player

1) PC Hard disk Requirements:

IBM PC, compatible PC, notebook with USB interface

2) Operator System Requirements

Microsoft Windows XP/2000/ME/98 or Mac OS 9.X, Linux 2.4 Core above or other operator systems which support the protocol of USB Mass Storage

Installation Guide of Acer Advanced MP3 Player

2.1 Windows98 Operation System

Under win98, this installation will install the driver & Tool for the player.

- 1) Put the driver CD into CD-ROM.

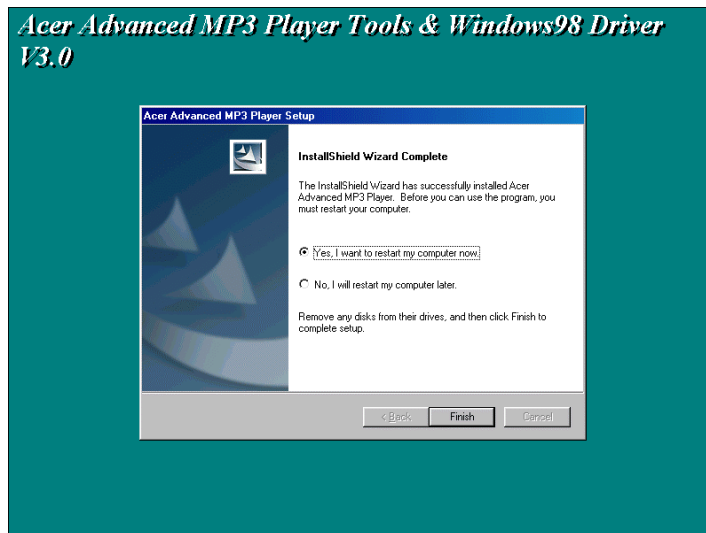
-
- 2) An Autorun interface will appear, click the Installation ICON and the follow window will appear:



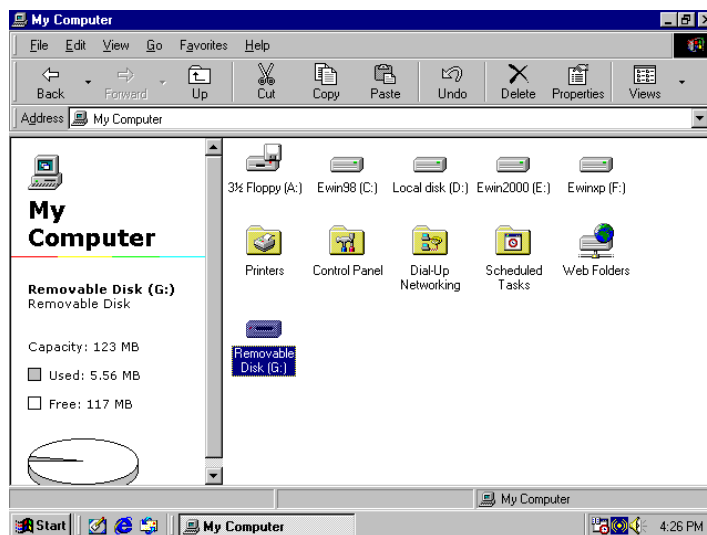
- 3) Click the Next button and follow the install wizard steps, the following window will appear:



- 4) Click the Finish button; it will pop up a window as the follow.



- 5) Click the button Finish and the system will restart, after the system is rebooted, insert the player into the USB port and a "Removable disk" symbol will appear. That means you can use Acer Advanced MP3 Player as a hard disk.



2.2 Windows Me/2000/XP Operation System

Under win2000/XP, the installation will setup the tools only for the MP3 player.

- 1) Put the driver CD into CD-ROM.
- 2) An autorun interface will appear, click the Installation ICON and the follow window will appear:

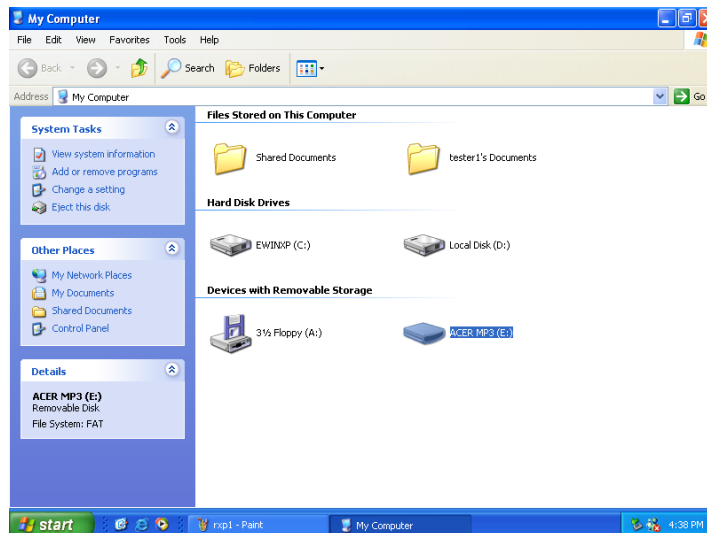


3) Click the Next button and follow the install wizard steps, the follow window will appear:



4) Click the Finish button; it will install the tools completely.

Insert the Acer Advanced MP3 Player directly to your computer's USB interface. The system will recognize it automatically and meanwhile there is a driver symbol "Removable Disk" appears on "My computer". And you can use it like usual ones.



2.3 MAC OS 9.X Operation System

Insert Acer Advanced MP3 Player directly to your computer's USB interface. The system will recognize it automatically and meanwhile there is a driver symbol "Untitled" appears on the desktop. And you can use it like usual ones.

2.4 Linux2.4 core Operation System

For Linux system, you should use it as these steps:

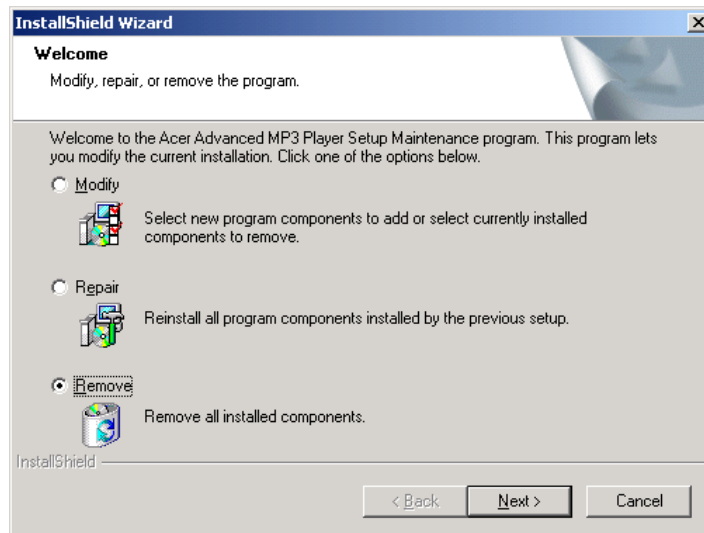
- 1) Boot your computer.
- 2) Plug Player into USB interface of the computer.
- 3) Login as root, type in the order: "mount/dev/sda1/mnt", this command will create a directory for MP3 Player. And the flash disk will be mounted then you can use it freely.

Attention: The item "sda1" or the command "mount/dev/sda1/mnt", may be changed due to the usage status of the computer or flash disk. Please operate according to the Linux order regulations.

3 Uninstall Acer Advanced MP3 Player

3.1 Uninstall in Windows98

- 1) Hardware uninstall: When you complete the using of Acer Advanced MP3 Player, you can pull it out from the USB interface if only the indicator light stops glinting. And the symbol of "Removable Disk" will disappear automatically.
- 2) Driver uninstall: If you want to uninstall the driver of Acer Advanced MP3 Player, inset the install CD into the CD-ROM and click the installation button, it will show the follow windows, Click Next button and follow the install wizard to finish your job.

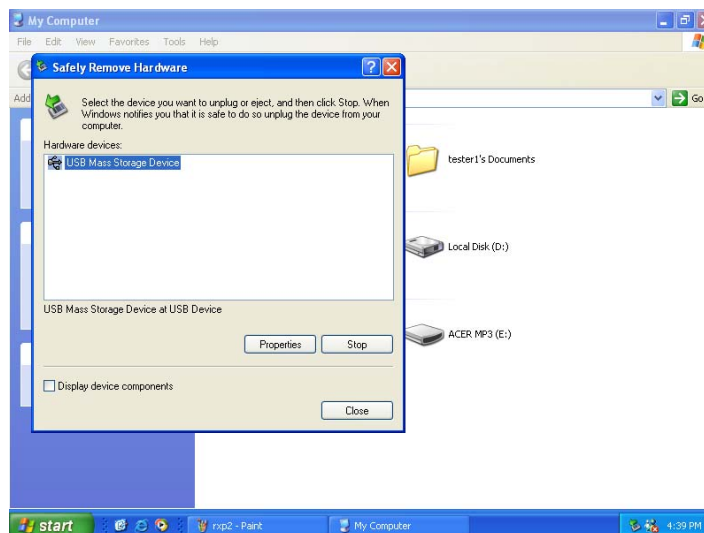


3.2 Uninstall in Windows Me/2000/XP

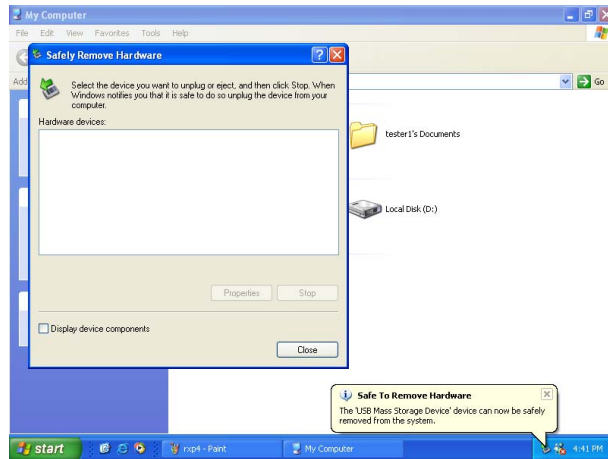
- 1) Double click the icon “pull out or eject the hard disk” on right bottom of the taskbar, as the follow picture:



- 2) Choose the dialogue frame “USB Mass Storage Device”



- 3) Click “Stop”
- 4) Click “OK” when the system indicates “USB Mass Storage Device equipment can be removed safely from the system”, and then you can pull out the Acer Advanced MP3 Player safely.



3.3 Uninstall in MAC OS 9.X

- 1) Choose "Untitled" disk
- 2) Click the menu "others" and choose "pull out" then click;
- 3) when the system indication "Now you can pull the box-hardware from USB equipment, because Macintosh has finished its management", then click "OK" to pull out the Acer Advanced MP3 Player from the USB interface.

3.4 Uninstall in Linux 2.4 core

Before unplugging the MP3 Player, type in the order "umount /mnt ". The system will release the flash disk and then you can unplug the device safely.

4 Functions and guide

In the menu mode, the **mode** key is for conform a selection and for enter or return to the submenu.

4.1 Power ON / OFF

Press "Power on/Play/pause/Stop/Power off" (▶||) button 2-3sec to turn on.

Press "Power on/Play/pause/Stop/Power off" (▶||) button 3-5sec to turn off while playing.

In the standby mode, the player will shut down automatically when the machine is not being operated for 30 seconds.

4.2 Play music files

If you turn on the MP3 Player, the player will enter the standby mode, press the "▶||" button; Or when you connect the player to computer, Press "mode" key, you will activate the music play mode, as the following graphic:



In Play mode, press "▶▶" or "◀◀" button to select the next or previous song

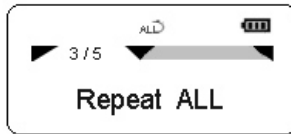
In Play mode, press **mode** key to enter the play menu.

4.3 Repeat mode Control

In the play mode, press the **mode** key to enter the play menu, as in the following picture:



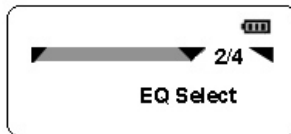
Press the **mode** key to enter the repeat setting submenu, as in the following graphic:



Then you can change the repeat modes from Normal to Preview, Repeat All, Random or Repeat One by using the “▶▶” or “◀◀” key. Press the mode key to confirm your selection.

4.4 EQ Mode:

In the play mode, press the **mode** key to enter the play menu and choose the EQ Select item, see the following illustration:



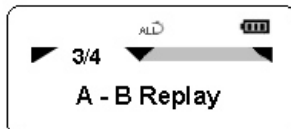
Press **mode** key to enter EQ setting mode, as in the following illustration:



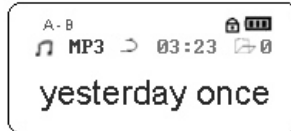
The Equalizer has 6 EQ modes (Jazz, Rock, Classic, Pop, Soft, and Natural). You can change the EQ mode by using the “▶▶” or “◀◀” key.

4.5 A-B Replay

In play mode, press the **mode** key to enter the play menu, select A-B replay and you can replay the song or paragraph you select, see the following picture:



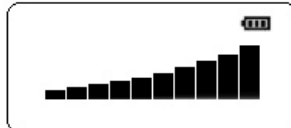
As you enter the A-B replay mode, when the letter A is blinking, press **Next** key to set the start point; when the letter B is blinking, press **Next** key to set the end point. The player will replay the song snippet you select.



To cancel the A-B replay mode, Please press the **mode** key.

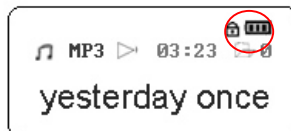
4.6 Volume Control

When MP3 is on standby or playing, press “VOL+” or “VOL -” button to control the volume and the LCD will show the following graphics:



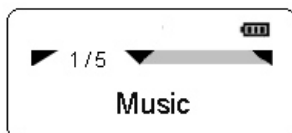
4.7 HOLD Function

Using the HOLD function can prevent a malfunction of the player by accidentally pressing a wrong button. Move the HOLD switch on the side of the player to HOLD. A lock icon on the LCD panel is displayed for the setting. Move the switch to HOLD OFF and a lock icon on the display disappears, like this:

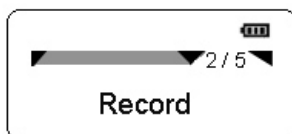


4.8 Main Menu

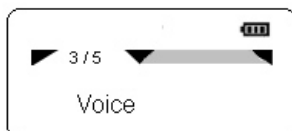
In Standby mode, press the **mode** key and enter the main menu. This menu contains 5 items. Press “▶▶” or “◀◀” to select the menu item, see illustration:



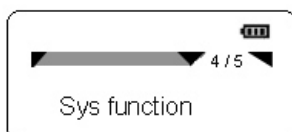
Enter the music directory to play MP3/WMA files,.



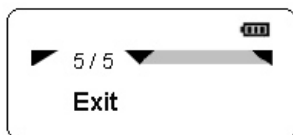
Select this item to enter record mode.



Select this item to enter the voice directory where you can play voice recording files.



Select this item to enter the system setting menu.

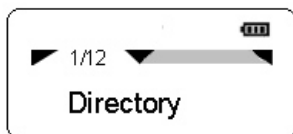


Exit the main menu.

4.9 System setting menu

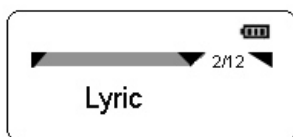
When you select the “sys function” item in the main menu, you will enter the system setting menu:

There are 12 submenus in the system setting menu. You may use “▶▶” or “◀◀” to select the menu item and then press the mode key to confirm your selection. See the following illustration:

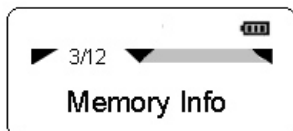


Select the directory. As you select music Dir, the Player will play the music files; and if you select record Dir the device will play the voice files.

When you store your music files in many subdirectories, it will display all subdirectories when you select music Dir, you may change the music subdirectory by using “▶▶” or “◀◀” to select the subdirectory and then press the mode key to confirm your selection.



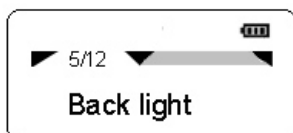
Disable and enable the lyric display. If you select lyric off it will not display lyric files when playing.



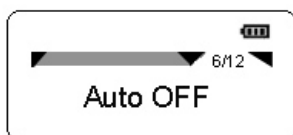
Check the memory information in the MP3 device.



Filter recording noise. You can select filter levels from 1 to 6.

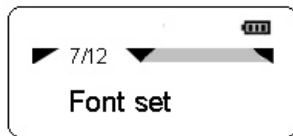


Change the back light of the device. You can change the back light lamp time from 0 to 30 seconds, increments of 5 seconds. When you select the back light lamp time of 0 seconds, the back light will not activate if you press any key.



With this item you can set the auto/off time when there is no

signal to the player. Using increments of 5 seconds you can change the time from 0 to 60 seconds.



Enable you to set the menu font.

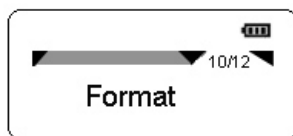


Allow you to change the contrast of the LCD from 0 to 15.

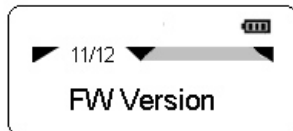


Use this item you can select to del music or record files, and you can select to del one or all files. When you select del one music file, it will only del the appointed music file; when you select del all record files, it will del all record files, such and such.

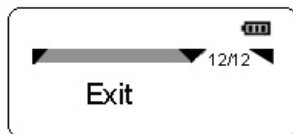
When you select to del file, press Play button (▶||) to confirm your selection, or press Vol+ button to cancel your selection.



This selection is for formatting your machine, as you select yes and then press “▶||” key, it will activate the format. Notice that you should backup the data in your player because it will erase all off your data when you do this format.



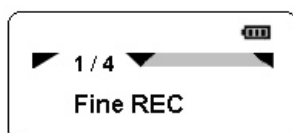
Here you can check the firmware version of your player.



Exit the sys/function setting menu.

4.10 Voice Recording

In the standby mode, press the **mode** key to select the “record” item from the Main menu. A recording mode will appear as the following graphic:



After you select the record mode and press the **mode** key, you can begin recording. You will observe the following picture:

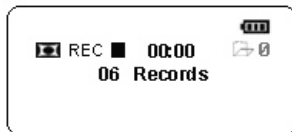


To pause recording please press the “▶||” button, see the following illustration:



To continue recording, please press the “▶||” button again.

After recording is complete, press “▶||” button 4-5 seconds to save the recording files, the LCD will indicate a graphic file is building like this:



The recorded file is saved as “MOD**.ACT” in the Voice Folder.

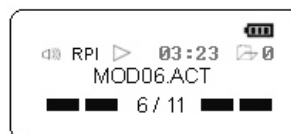
To exit the record mode, in the recording standby state, press **mode** key to access main menu, and select the music or voice mode.

4.11 Voice Play

Select Voice Play Mode by pressing “**Mode**” key to access the main menu and select the voice item.

Alternative way, in sys function setting menu, select the directory item where you can enter the Voice play mode.

After selecting the desired file to play from the list, Press “▶||” button to play the Voice folder and press “▶||” button again to stop playing, as illustrated in the following picture.



4.12 How to display the lyric synchronously

4.12.1 How to make lyric file:

There are two ways to make it:

- (1) Use Word Pad to edit lyric.
- (2) Use professional lyric software to edit.

The importance is that the lyric must be edited according to the playing time.

Format ” [mm:ss]” or ” [mm:ss.fff] ” (minute : sec)

mm: minute

ss: seconds

For example: Angel's Tale

[00:00.00]Angel's Tale

[00:12.72]Here in my heart,

[00:17.55]Memories linger,

[00:22.23]I hold them sacred,
 [00:28.61]Safe from all others,
 [00:32.99]Angel's tale.
 [00:42.56]A love such a this,
 [00:47.54]Once in a lifetime,
 [00:53.17]Lost in your beauty,
 [00:58.99]Still dreaming of you,
 [01:05.32]Angel's tale.
 [01:12.58]You drove the sinner from me,
 [01:19.57]And shone with such glary,

.....
 [04:49.74] make: xxy 2004.2.6

NOTE : Use Word Pad tool to edit, then save the file after finishing editing, choose ALL FILES in file type, the file extension name must be *.lrc in the saving dialog box.

File Name: XXX.lrc (please make sure to put .lrc as an extension)

File Type: All Files (please make sure to select All Files, not Text File)

4.12.2 Lyric file display

In mp3 player, the name of song must be the same as the name of lyric files, and also they must be in the same folder. The extension of song files maybe *.mp3 or *.wma, while the extension of lyric files must be *.lrc.

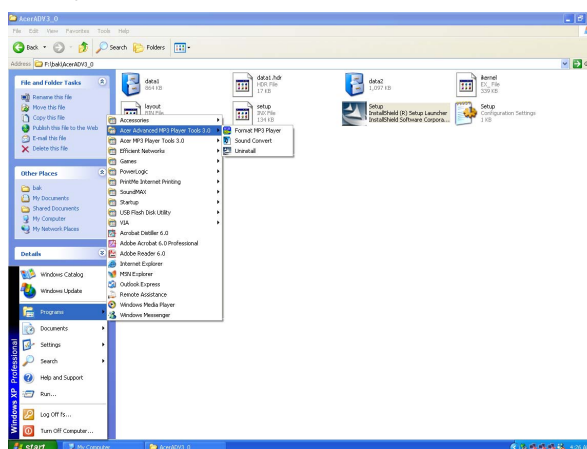
For example: yesterday once more.mp3 and yesterday once more. lrc

4.13 Software using

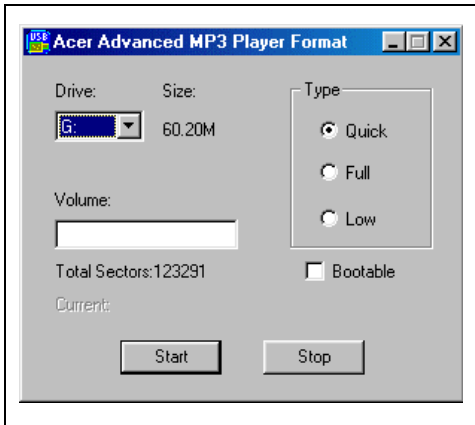
After you setup the software you can use the PC to manage your player:

4.13.1 Use the software to format your player:

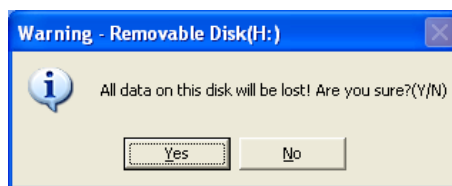
1. If your MP3 Player is damaged, you may need to re-format the device using the MP3 Player's Format Tool.
2. To select the MP3 Player Format tool, see below:



2. When you select the format tool, the following will appear and give you these options:

	<p>Volume: the device's volume when you change to the string you input for this item.</p> <p>Quick: when you select this item it will do a quick format for the device.</p> <p>Full: when you select this item it will do a full format for the device.</p> <p>Low: when you select this item it will do a low format for the device.</p> <p>Bootable: when you select this item it will create a bootable disk for you.</p>
---	--

3. Select the item and press the Start button, this message will appear as the follow, Click the YES button, it will format you disk automatic.



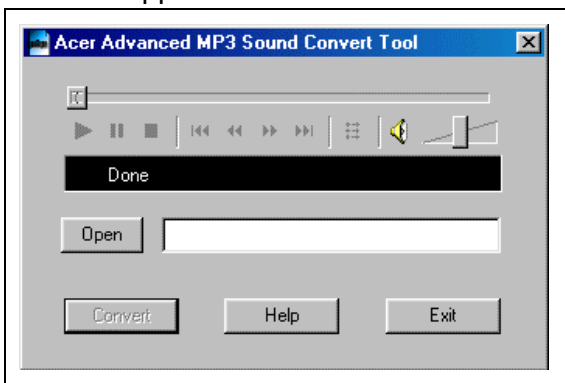
4. If you select the bootable item and use this tool to format the player, it will create a bootable disk for you , so that you can then use this Player to re-boot your computer.

Warning: Please backup your data in the player before you want to do a format, because it will erase all of your data when do a format. If you unplug the unit when the device is doing a low format, the device will be damaged!

4.13.2 Use the sound converter tool:

This tool is used for converting rcd/rec/act file recorded by an MP3 player to WAV file.

1. Open the Sound Convert Tool.
2. It will appear as follows:

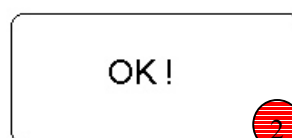
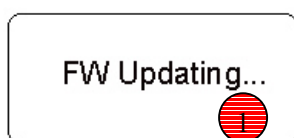
	<p>[Open]: Open a WAV, MP3 or rcd/rec/act file. If it is a WAV or MP3 file you can play it back directly. If it is an rcd/rec/act file you should convert it to a WAV file before playing it back.</p> <p>[Convert] Do convert. Only enable when selecting an rcd/rec/act file.</p> <p>[Help] Shows this help dialog.</p> <p>[Exit] Exit this tool.</p>
---	---

3. Press the Open button and an explorer windows will appear. Select the file you want to open.
4. If the file you opened is an MP3 or Wav file, you can use this tool to play it.
5. If the file you opened is a REC/RED/ACT file, you can use this tool to transform it to a wav file.

5 Manage your MP3 Player

Follow the instructions below to Firmware upgrade. The firmware has two files: \$norfla\$.ugr and \$nanfla\$.ugr, but the two files are not necessary for firmware update every time, when the two files are exist, you must upgrade the two files at this time.

- 1) Be sure to backup your important files in your unit before Firmware Downloading.
- 2) Connect the unit into the USB port
- 3) Firstly copy the file \$norfla\$.ugr to the MP3 root directory.
- 4) Safely unplug the device from PC, the machine will update the firmware automatic, and the following picture will appear on the LCD.



- 5) Connect the unit into the USB port again and format the machine.
- 6) Secondly copy the file \$nanfla\$.ugr to the MP3 root directory.
- 7) Safely unplug the device from PC, the machine will update the firmware automatic, and the LCD will show the same graphic as item 4.
- 8) Connect the unit into the USB port again, you will find a file succeed.txt in the MP3 player root directory, it means that you have upgraded the device successful.

Notes: Low battery will cause the firmware update to fail and damage the player.

6 Safety Precaution

See following precautions. Any violation of one or more of the following precautions may cause damage to the player and will void the warranty.

- Please take out the battery when you will not use the machine for a long time.
- Conform that the lock switch is unlocked before you turn on the unit.
- Avoid exposure to heat, moisture and static electricity.
- Do not drop or place heavy objects on the player.
- Vibration or shock to the unit can cause damage.
- Do not place the player in or near any liquid.
- Avoid areas of high humidity, strong magnetic fields or high heat when storing the unit.
- Do not use paint thinner, alcohol, or benzene when cleaning the unit. This may change the color of the player or damage the surface. Use a soft towel to clean the surface of the player.
- To avoid damage to the unit never open the case.
- Do not expose to excess heat (over +140°F). Avoid exposure to direct sun. Do not leave in a warm car, especially during the summer season.
- We strongly recommend that as you uploading/downloading files from your PC, please never disconnect the player from the computer until the blinking display stops. If you unplug the unit when the display is blinking, data may be lost!
- We strongly recommend that you back up your data for safety.

7 FAQ

7.1 The player does not turn on:

- Check if the player has the batteries installed.
- Turn on your computer, connect the player to the USB port and turn on the player.
- If the above step does not resolve the problem, then do a “Firmware upgrade” and format the player, you can find and download the firmware from our website.

7.2 LCD display does not show anything:

- Press the Play/Pause button to turn on the player.
- If the above step does not resolve the problem, then do a “Firmware upgrade” and format the player.

7.3 For the Window 98 user – When PC doesn’t recognize the player.

- If your operating system is Windows 98, please connect the player to the USB port of PC first and after it recognizes it as a new hardware, then install the driver.
- If your PC doesn’t recognize the player, please repeat #1 step.
- If the above step does not resolve the problem, then run the “Firmware Download” program and format the player again.

7.4 When shall we change the battery?

- The icon for coulometer on the LCD is empty and blinking.
- The player powers off by itself while playing or powers off quickly when you turn on.

acer