

Acer MP150

User's Manual
Ver 1.0

acer

Copyright

Copyright 2006 by Acer Inc., All rights reserved. No part of this publication may be reproduced, transmitted, transcribed, stored in a retrieval system, or translated into any language or computer language, in any form or by any means, electronic, mechanical, magnetic, optical, chemical, manual or otherwise, without the prior written permission of Acer Computer GmbH

Disclaimer

Acer Inc. makes no representations or warranties, either expressed or implied, with respect to the contents hereof and specifically disclaims any warranties, merchantability or fitness for any particular purpose. Any software described in this manual is sold or licensed "as is". Should the programs prove defective following their purchase, the buyer (and not this company, its distributor, or its dealer) assumes the entire cost of all necessary servicing, repair, and any incidental or consequential damages resulting from any defect in the software. Further, Acer Computer GmbH, reserves the right to revise this publication and to make changes from time to time in the contents hereof without obligation to notify any person of such revision or change.

All brand and product names mentioned in this manual are trademarks and/or registered trademarks of their respective holders.

Table of Contents

<i>I Safety Instruction</i>	4
<i>II Product Introduction</i>	4
1 Major features	4
2 Keys and Functions.....	5
3 Pack and Accessories	5
4 Charging batteries	5
5 Installation of USB drive	6
6 The linkage and safe remove of USB cable	7
<i>III Basic Functions</i>	8
1 Basic operation.....	8
2 Play music	8
3 Video playing.....	10
4 Picture viewing	10
5 Microphone Recording	11
6 E-book	12
7 Files Operation	12
8 Menu Setting	12
9 Format conversion of video files	13
<i>IV Common Problems and Solutions</i>	15
<i>V Specifications</i>	16

I Safety Instruction

- 1) Make sure a close reading of this Safety Instruction.
- 2) Be sure to well keep this brochure for further need
- 3) Please keep MP3 in a dry place.
- 4) Please keep it out of sunshine.
- 5) Any liquid should never be poured into this device or destruction or electric leakage might occur
- 6) If one of the following cases happens, please contact a professional:
 - the pouring of any liquid into the device
 - the device is dampened
 - abnormal working of the device or no working can be obtained under the manual's guide
 - the drop or damage of the device
- 7) No use of MP150 in such cases:
 - when driving or riding
 - when doing a high risky job
 - when walking on the street
 - any case that needs full attention
- 8) If you want to format the disk of MP150, please select the format of FAT16.
- 9) No liquid or spraying detergent can be used for cleaning, and only a wet soft cloth is enough.
- 10) Please adjust the volume to proper when the earphone is connected in case of any listening hurt.
- 11) Attention: Explosion might happen due to any improper use of batteries. Please see the instructions in chapter of "Battery"
- 12) The used batteries should be recycled rather than disposed as common rubbish.

II Product Introduction

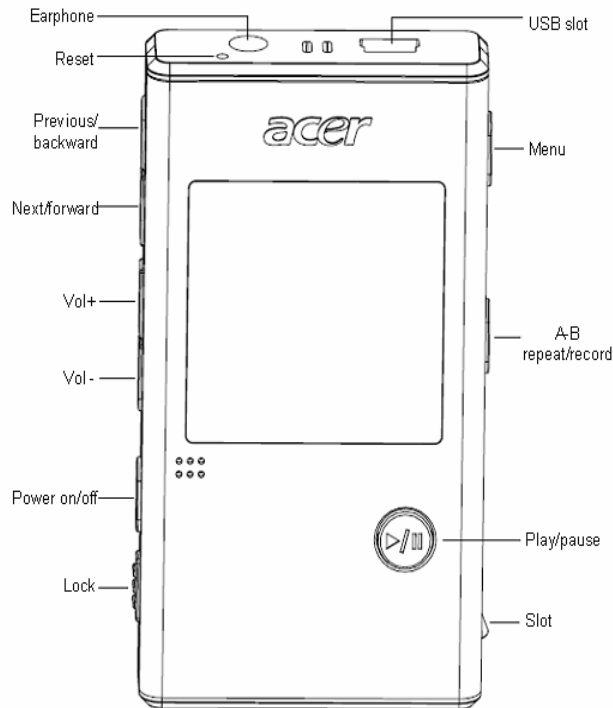
Thank you for choosing Acer's MP150, which is a high-quality and portable MP3 player with chargeable Li-Polymer battery. You can play different formatted audio files or converted video files (with conversion tool provided) and enjoy the perfect listening and watching experience. It is also a portable USB storing device which enables you to store and manage your personal data.

1 Major features

- **Display** –1.5" OLED screen can display clearly the pictures and video files.
- **Video playing** –It supports SFM video files.
- **Audio playing** –It supports MP3/WMA /WAV audio files
- **Lyric Synchronization**—Songs will play with lyrics.
- **Photo viewing** –It supports JPG and BMP files and the user can view pictures by copying them to MP150.
- **Text reading** – It has e-book function that supports. text files (ANSI and Unicode).
- **Recording** – It supports audio recording(microphone recording)
- **USB 2.0 Port**—It supports USB 2.0's high-speed and full-speed functions.
- **SD Card Slot** –It supports SD cards.
- **Battery**—The built-in rechargeable Li-polymer battery is durable.
- **Video files conversion** – the accessory software can convert any unreadable file formats into readable ones.

- **Multiple languages** –It supports multi-languages, such as English, German, French, Italian, Spanish and Dutch.
- **Firmware upgradation** – The firmware can be upgraded.

2 Keys and Functions



3 Pack and Accessories

Please be sure that the pack and accessories include the following pieces:

- Acer MP150 player
- User's manual
- Installing CD
- Power adapter
- USB line
- Stereo earphone

4 Charging batteries

- 1) This device has the built-in Li battery and the user can charge the battery by using the accessory charger. No matter turning it on or off, the battery will be charging when the charger connects it to the live power.
- 2) If the battery indicator shows one grid or no grid, it means lacking the power and charging is needed.
- 3) In order to last the battery life, it is recommended to discharge the battery completely before charging during the first two times of charging.
- 4) If there is a long rest time for the device, in case of the damage made by overuse of battery, please make sure that you charge and discharge the device at least once a month

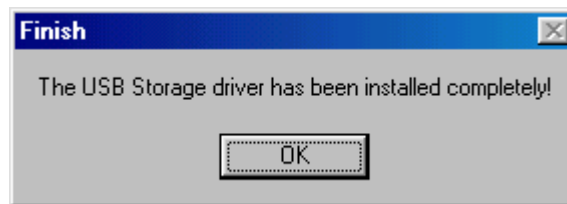
5 Installation of USB drive

The USB drive installation is only needed for windows 98 and windows 98 se computers. The steps are as follows:

- 1) Insert the accessory CD into the CD drive and it will work automatically. The interface shows as follows. In the process of installing, consistently click “next” till “finish”.

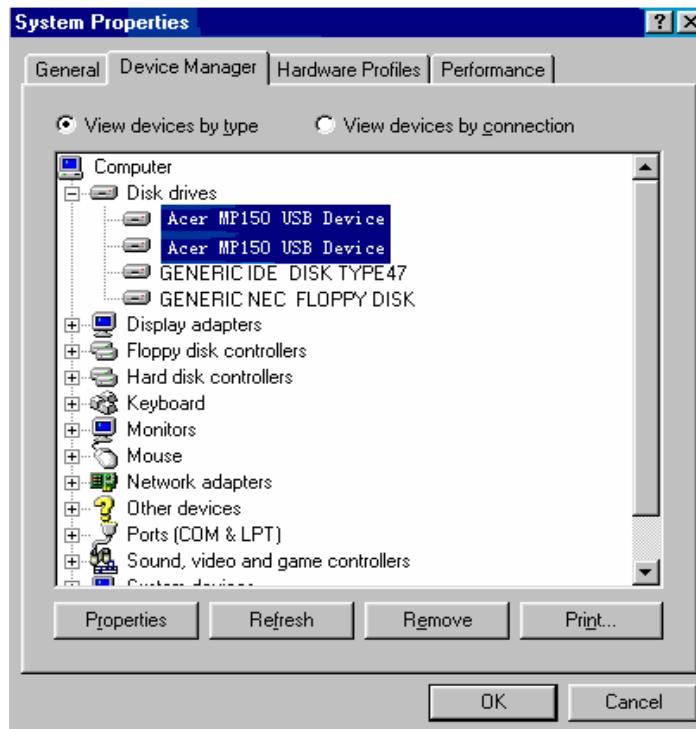


- 2) A dialogue box of whether “restart the system” will eject and select “ok” to restart the computer, then the installation is finished.



Confirm the installation of USB drive.

- 1) Connect MP150 player by the USB cable to the computer
- 2) Choose “Control Panel”, “System”, and enter “Device Manager”, it will show as follows;



6 The linkage and safe remove of USB cable

6.1 Link the USB cable

Link the MP3 player with the computer by USB cable, and the screen of MP3 will show the following picture. It means the next step of copying data can start.



When the player is transferring data, no direct break between the player and computer is allowed, otherwise the data might miss. Please safely remove the player device from the computer.

6.2 Safely remove the USB cable from the computer

- 1) Right-click the “Plug and play” button in taskbar and choose “Safely remove the device”



- 2) Select the device you want to unplug or eject and then click [stop] ;
- 3) Confirm devices to be stopped and choose [OK] to continue;
- 4) Click [close] to end the whole operation

Attention: Any abnormal interrupt of the linkage of the device to the computer might cause hurt to the product.

III Basic Functions

1 Basic operation

Turn on and off the player

- 1) Turn on: Long press "Power" key the screen will show the Acer Logo (shown as follows) and enter the main menu interface. The defaulted choice is "music".

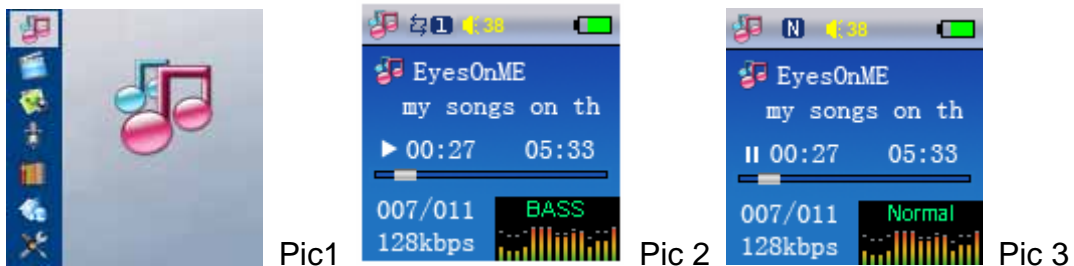


- 2) Turn off: Long press "Power" till the Power off logo appears (shown as follows). If any unknown reason causes the player into dead status, normally press "RESET" key to restore it.

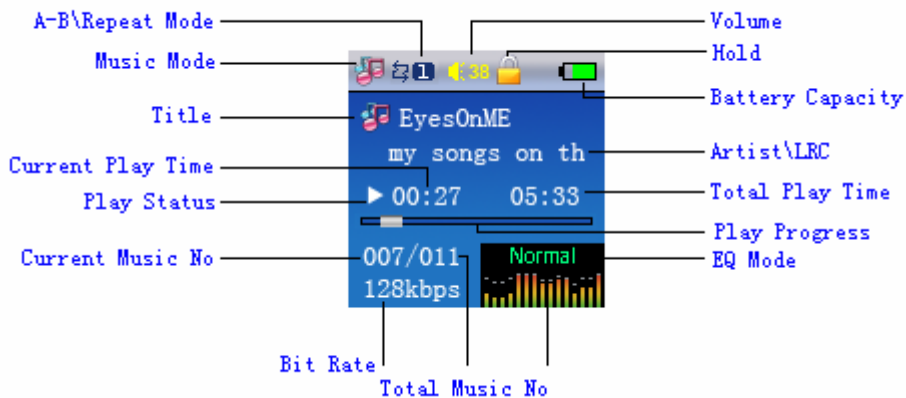


2 Play music

The defaulted mode is "Music" after entering the main menu as in Pic 1. Press "ENTER" to the interface of music list, (it is the playing status) as in Pic 2. Press again "Enter" to pause the music, see Pic 3



- 1) Display of the music playing modes



- 2) How to choose music (the function to select songs while listening to a song)?

Under music playing status, long press “Enter”, a “Select Memory” dialogue box will appear immediately, see Pic 4. Press “⏪” “or” “⏩” “key to choose “LOCAL” or “Card”, and press “ENTER” to get into the root directory of Music. Press “⏪” “or” “⏩” “key to choose the wanted music folder and press “ENTER” to get into the sub directory of music folder and press “ENTER” again to go to the Music file list. Press “⏪” “or” “⏩” “key to choose the needed music file and press “ENTER” to confirm playing the music. Attention: long press “ENTER” means return to upper directory. Repeat “ENTER” will help back to the main menu. See the main menu in Pic 1.

3) How to adjust the volume?

When playing the music, press “VOL+” or “VOL-” to add or decrease the volume.

4) How to set EQ, playing modes and A-B replay?

- **EQ:** The player has built in 7 sound effects, namely Normal, Rock, Jazz, Classical, Pop, Bass and Treble. Under music playing status, short press **MODE**, a setting window will pop out, see Pic 5. Press key to choose among different EQs, then short press “ENTER” to confirm it. Press “⏪” “or” “⏩” “ to choose “Exit” and short press it to return to the play interface.
- **Playing modes:** This player has equipped 3 music playing modes (Normal **N**, Repeat One **O**, Repeat All **A**) Normal: Play the first music file till the last in a certain directory. Repeat One: Repeat one song; Repeat All: Repeat all the songs in music file. When in the music playing or pause status, short press “MODE”, a setting window will pop out, see Pic 5. Press “⏪” “or” “⏩” “ to choose “Repeat” and short press “ENTER” for confirmation. The three modes will appear and press “⏪” “or” “⏩” “ to select one and short press “ENTER” for confirmation. Press “⏪” “or” “⏩” “ to select “Exit” and short press “ENTER” to return to the playing interface.



Pic 4

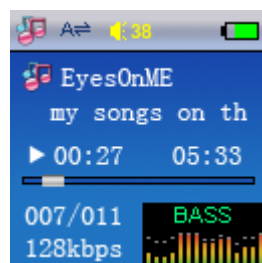


Pic 5

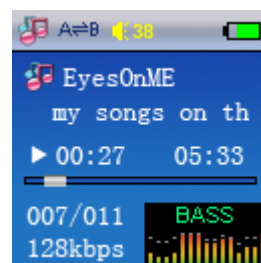


Pic 6

- When music is playing, gently press “REC” button once to determine the beginning of the period you want to repeat. The screen will show “A-”, see Pic 7; Gently press “REC” again to set the end of the section. The screen will show “A-B”, see Pic 8. Then this period of the music will be repeated over and over. One more press “REC” will end the repetition.



Pic 7



Pic 8

5) Lyrics Synchronization

If a *.MP3 file and a *.LRC file of the same music are copied into the player, the lyrics will appear the same time when the music is playing, see Pic 8.

Attention: the MP3 file and the LRC file of the same music must be under the same name. For example, only these files that are named “Eyes On Me.MP3” and “Eyes On Me.LRC” are copied into the player, can the lyrics synchronization be realized.

6) How to delete the songs?

Under the Music list, press “⏪ “or” ⏩ “key to choose the music file that needs to be deleted, and short press “**MODE**”, a window of “Property, delete and exit” appears. Press “⏪ “or” ⏩ “key to choose “delete” and short press “**ENTER**”. A dialogue box “sure to delete” pop up and press “⏪ “or” ⏩ “ to choose “Yes” and press “**ENTER**” to delete the chosen file.

3 Video playing

Select “Video” under the main menu, as in Pic 9 and press “**ENTER**”, a window of “Select Memory” show up. Press “⏪ “or” ⏩ “to select “LOCAL”or”Card”and press “**ENTER**” to the root directory of VIDEO. Press “⏪ “or” ⏩ “to select the wanted video file and press “**ENTER**” to the sub directory and press “**ENTER**” to the VIDEO file list. Press “⏪ “or” ⏩ “to the needed VIDEO file and press “**ENTER**” to confirm it. During the procee of video playing, press “⏪ “or” ⏩ “can play the previous or the next video file. The player only supports SFM files and special VIDEO conversion tool is provided for format conversion. The latter part has more.

1) How to adjust volume?

When playing the video, press “**VOL+**”or”**VOL-**”to add or decrease the volume.

2) Check the file property

Under the VIDEO file list, short press “**MODE**”, and a window of “Property, delete and exit” appears. Press “⏪ “or” ⏩ “to select “Property “ and short press “**ENTER**” to check the size of the chosen file. Select “Exit” to return to the file list.

3) Delete the VIDEO file

Under the VIDEO file list, short press “**MODE**” and a window of “Property, delete and exit” appears. Press “⏪ “or” ⏩ “to select “Delete” and short press “**ENTER**”. A dialogue box “Sure to delete” pops up and press “⏪ “or” ⏩ “to select “Yes” and press “**ENTER**” to delete the chosen file. Press “Exit” to return to the VIDEO file list.

4) Exit the VIDEO playing

Under VIDEO file list, long press “**ENTER**” to exit to the main menu.



Pic 9



Pic 10

4 Picture viewing

Select “Photo” under the main menu (see Pic 10)and press “**ENTER**”, a prompt window of “Select Memory” appears, press “⏪ “or” ⏩ “to select “LOCAL”or”Card”and press “**ENTER**” to the root directory of PHOTO. Press “⏪ “or” ⏩ “to choose the right Photo folder and press “**ENTER**” to the sub directory of PHOTO. Press “**ENTER**” again to the PHOTO file list (it supports “bmp” and “jpg” formats). Press “⏪ “or” ⏩ “to select the needed picture and press “**ENTER**” to display it. (see Pic 13) When viewing the pictures, press “⏪ “or” ⏩ “to view the previous or the next picture. Short press “**MODE**”, a window of “Manual Play, Auto Play, Exit” will jump out and press “⏪ “or” ⏩ “to choose “Manual Play” and short press “**ENTER**” for confirmation. Then a window of “Enable, Disable, Exit” will show up and press “⏪ “or” ⏩ “to choose” Enable” and press “**ENTER**” to confirm the manual displaying; or

press “⏪ “or” ⏩ “ to choose “Disable” and press “**ENTER**” to confirm the autoplay. Long press “**ENTER**” to return to the picture file list.

1) Check the property of photos

Under the picture file list, short press “**MODE**”, a window of “Property, delete and exit” will show up and press “⏪ “or” ⏩ “to choose “Property” and short press “**ENTER**” to check the property of the chosen picture. Select “Exit” to return to the picture file list.

2) Delete the picture

Under the picture file list, short press “**MODE**”, a window of “Property, delete and exit” will show up and press “⏪ “or” ⏩ “to choose “delete” and short press “**ENTER**”, a window of “sure to delete” pops up. Press “⏪ “or” ⏩ “to choose “Yes” and press “**ENTER**” to delete the chosen picture. Select “Exit” to return to the picture file list.

3) Exit viewing photos

Under the picture file list, long press “**ENTER**” to return to the main menu.

Attention: when viewing the pictures that are not “BMP” or “JPG” supported by the player, the system will prompt the window of “error format”.

5 Microphone Recording

Select “Record” under the main menu, as in Pic 11 and short press “**ENTER**”, a prompt window of “Record Menu” shows up and press “⏪ “or” ⏩ “to choose “Record” among “Listen, Record, Record Setting, Exit”. Short press “**ENTER**” and a prompt window of “Select Memory” appears and press “⏪ “or” ⏩ “to choose “Local” between “Local” and “Card” and short press “**ENTER**” to begin recording, see pic 12,(the display of MIC voice recording) Short press “**ENTER**” to pause the recording and long press “**REC**” to stop recording and save the file automatically, see Pic 13. Short press “**ENTER**” again to return to the prompt window of “Record Menu”.

1) Recording setting

Select “Record” under the main menu and short press “**ENTER**”, a prompt window of “Record Menu” shows up and press “⏪ “or” ⏩ “to choose “Record Setting” among “Listen, Record, Record Setting, Exit”. Short press “**ENTER**”, a prompt window of “Record Setting” jump out and press “⏪ “or” ⏩ “to choose “Long time” or “Fine REC” and short press “**ENTER**” for confirmation. Then return to the prompt window of “Record MENU”.

2) Playing recording file

When the recording voice source is selected as “MIC”, the recorded file will be automatically saved in the “VOICE” file under music file list. Under the main menu, select “Recorded” and short press “**ENTER**”, a prompt window of “Record Menu” will show up. Press “⏪ “or” ⏩ “to choose “listen” among “Listen, Record, Record Setting, Exit”. Short press “**ENTER**” and a prompt window of “Select Memory” appears, press “⏪ “or” ⏩ “to choose “Local” between “Local” and “Card”. Short press “**ENTER**” to play the recording file.



Pic 11



Pic12



Pic13

6 E-book

Select “E-book” under the main menu as in Pic 14 and press “**ENTER**”, a prompt window of “Select Memory” appears immediately. Press “**◀**” or “**▶**” to choose “Local” or “Card” and press “**ENTER**” to get into the root directory of E-Book. Press “**◀**” or “**▶**” to choose the needed E-Book folder and press “**ENTER**” to the sub directory and press “**ENTER**” to the file list. Press “**◀**” or “**▶**” to choose the needed E-Book file and press “**ENTER**” for confirmation. When reading the E-Book, press “**◀**” or “**▶**” to choose the displayed content. Short press “**MODE**”, a prompt window of “Manual Play, Auto Play, Exit” shows up and press “**◀**” or “**▶**” to choose “Manual Play” and press “**ENTER**” for confirmation. Then a window of “Enable, Disable, Exit” will show up and press “**◀**” or “**▶**” to choose “Enable” and press “**ENTER**” to confirm the manual displaying; or press “**◀**” or “**▶**” to choose “Disable” and press “**ENTER**” to confirm the autoplay. Long press “**ENTER**” to return to the picture file list.

1) check the property of files

Under the e-book file list, short press “**MODE**”, a window of “Property, delete and exit” will show up and press “**◀**” or “**▶**” to choose “Property” and short press “**ENTER**” to check the property of the chosen file. Select “Exit” to return to the file list.

2) Delete the e-book file

Under the e-book file list, short press “**MODE**”, a prompt window of “Property, delete and exit” will show up and press “**◀**” or “**▶**” to choose “delete” and short press “**ENTER**”, a window of “sure to delete” pops up. Press “**◀**” or “**▶**” to choose “Yes” and press “**ENTER**” to delete the chosen file. Select “Exit” to return to the e-book file list.

3) Exit e-book

Under the e-book file list, long press “**ENTER**” to return to the main menu.



Pic14



Pic 15

7 Files Operation

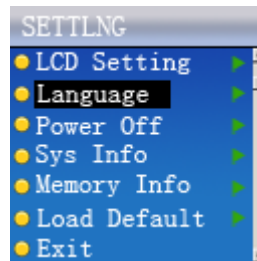
Select “Files” under the main menu, see Pic 15 and press “**ENTER**”, a prompt window of “Select memory” shows up. Press “**◀**” or “**▶**” to choose “Local” or “Card” and press “**ENTER**” to the root directory of files. Press “**◀**” or “**▶**” to choose the needed folder and press “**ENTER**” to the sub directory of the folder. Press “**◀**” or “**▶**” to choose the wanted file and press “**ENTER**” to play it.

8 Menu Setting

Select “SETTING” under the main menu as in Pic 16. Short press “**ENTER**” to go to the system setting, see Pic 17. It includes 6 settings, namely “LCD Setting, Language, Power Off, Sys Info, Memory Info, Load Default”. Press “**◀**” or “**▶**” to choose any setting and press “**ENTER**” to go to the detailed setting interface.



Pic16



Pic17

1) LCD Setting

Under “SETTING”, Press “**⏪**” or “**⏩**” to choose “LCD Setting” and short press “**ENTER**” to the screen setting interface. Press “**⏪**” or “**⏩**” to set the screen saver time and short press “**ENTER**” to return to “setting” interface.

2) Language setting

Under “SETTING”, Press “**⏪**” or “**⏩**” to choose “Langugae” and short press “**ENTER**” to the language setting interface. Press “**⏪**” or “**⏩**” to set the language and short press “**ENTER**” to return to “setting” interface.

3) Power off setting

Under “SETTING”, Press “**⏪**” or “**⏩**” to choose “Power Off” and short press “**ENTER**” to the Power Off setting interface. Press “**⏪**” or “**⏩**” to set the Power Off time and short press “**ENTER**” to return to “setting” interface.

4) System Information

Under “SETTING”, Press “**⏪**” or “**⏩**” to choose “SYS Info” and short press “**ENTER**” to the system information interface(company name, type, software edition). Short press “**ENTER**” to return to “setting” interface.

5) Storage Information

Under “SETTING”, Press “**⏪**” or “**⏩**” to choose “memory Info” and short press “**ENTER**” to the memory information interface(Total volume and rest volume of Local Memory and Memory Card). Short press “**ENTER**” to return to “setting” interface.

6) Load Default

Under “SETTING”, Press “**⏪**” or “**⏩**” to choose “Load Default” and short press “**ENTER**”. A prompt window of “Load Default ? Yes or No ?” appears, press “**⏪**” or “**⏩**” to choose “Yes or No” and short press “**ENTER**” for confirmation.

9 Format conversion of video files

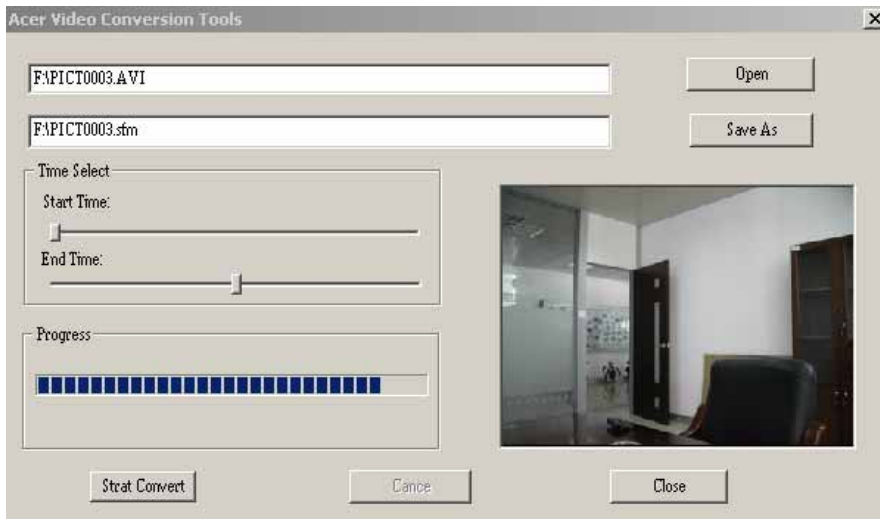
1) About the tool

It is used to convert the video files to SFM files that can be played in this player.

2) Software Operation

a) Introduction

- To operate the software, first click “start”-”program”menu, and select “MP3”-”FilmCre.exe”, and open the tool interface. As in Pic 18:



Pic18

- b) Add video files
- After the operation of the software, click “start” to add video files (or the will-be converted files. Video files appear as follows are will-be converted files if without any specification) and click the button;
 - A video file path is ejected and click right small button ▾ beside “review”and select the proper file type. Correctly choose a video file.
 - After adding a file, a “save as” will show the path of this video file. Click the little button ▾ on the right of “save as”to choose the saving place.
- 3) Choice of the conversion length and start conversion
- select the beginning point of the will-be converted file
 - select its ending point
 - Click “start converting” to operate conversion.(Pay attention to: converting progress bar and video interface)
- 4) Platforms
- Windows98, Windows Me, Windows2000, Windows XP. Windows Media Player 9.0 and up; DirectX 9.0 and up.

IV Common Problems and Solutions

The following part is some of the common problems in dealing with the product. Please check it first before contacting the Customer Service Center.

1. Q: The player cannot be started and LCD doesn't show anything, why?

A: Make sure that the battery is fully charged.

2. Q: why are the keys not functioning?

A:

1) Check if there is a "Hold" sign on LCD.

2) If there is a "Hold" sign, please push Hold button up and unlock the keys.

3. Q: The downloaded files whose capacities are smaller than the rest storage room of the player cannot be downloaded to the player.

A: The memory chip is taking 16kb or 32 kb as a memory unit and even a 1Byte file will take up a unit. Therefore some files whose capacities are smaller than the rest storage room cannot be downloaded to the player.

4. Q: The player turns off suddenly, why?

A:

1) Please check the [power off] under [setting] in main menu.

2) Please check if there is enough battery power.

5. Q: LCD screen shuts suddenly, why?

A: Please check if a screen saver is set

6. Q: Video, audio files cannot be played and pictures cannot be seen, why?

A:

1) The file formats must meet the requirement of this player

2) Make sure the file formats are supported by this product

3) If the file format is not supported by this product, please use the format conversion software to convert the format into readable one.

7. Q: There is no voice or little voice when playing music or video, why?

A: Please check the volume status, and adjust the volume button.

V Specifications

	Category	Parameter specification
System	Built-in Storage	128/256/512/1024MB Flash(For choice) SD/MMC Card
	File System	FAT16
User interface	Key Definition	Power, Up, Down, VOL+, VOL-, Enter, Mode, Lock, REC
	Language	Multi-Language Menu and Filename Display
	File View Mode	List View &Icon
	Battery	Rechargeable Li-Polymer 3,7V/570mAh
	Playback Time	Video: 4 hours, Audio: 8 hours (average)
	Power Saving	Auto Power off, Screen saver
Display	Interface	1.5" color OLED
Audio Output	Audio	Line out Stereo
	Earphone	30mW, 32Ohm, 1 outlet
USB2.0	Device	USB 2.0/ USB 1.1 interface
		Operation System: Windows98/98SE/ME/2000/XP Mac OS 9.0 and Later
General	Dimensions	83×47×3.5 mm
	Operation Temperature	0°C to 40°C

acer

<http://www.acer-euro.com>