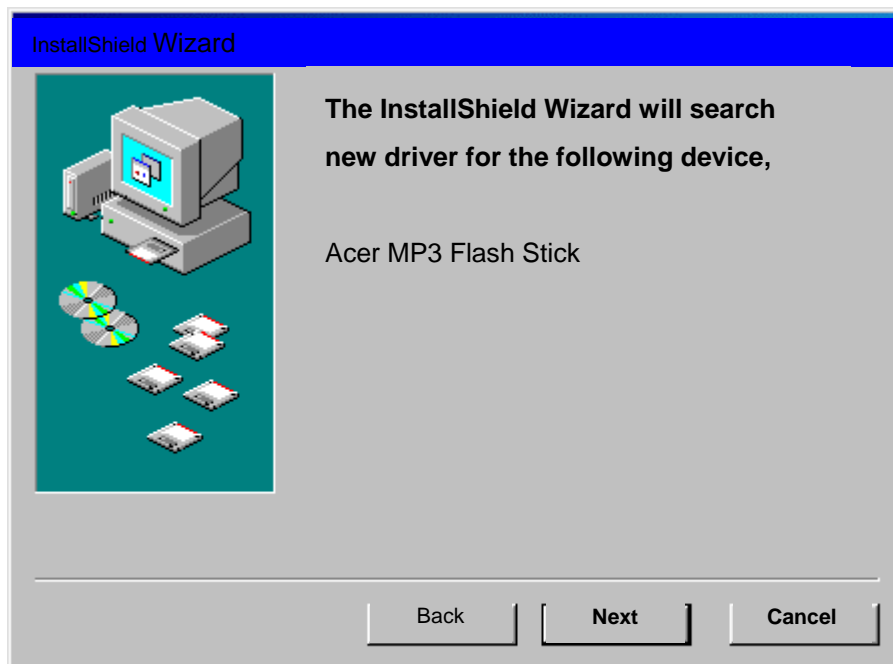
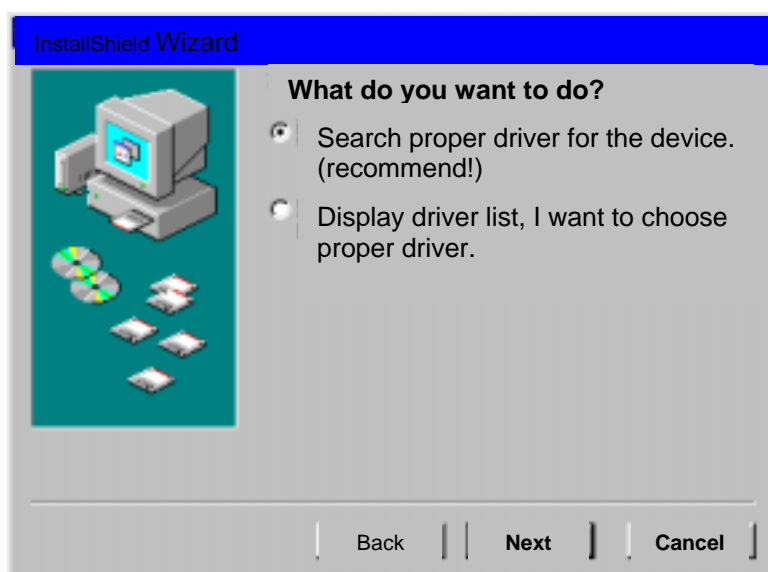

1. How to install driver

1.1 Windows 98/98SE Installation :

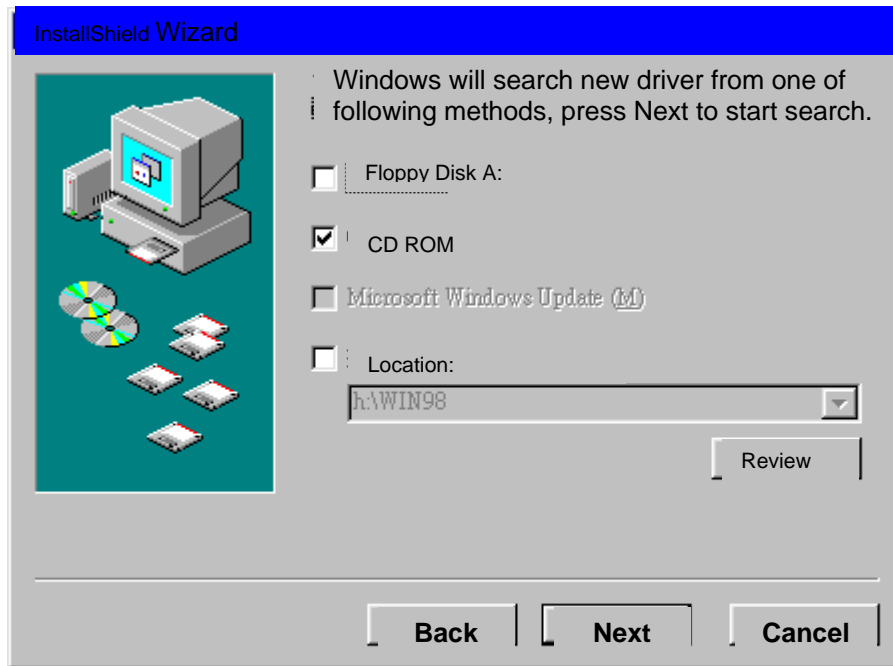
- (1) Plug Flash Stick into USB port. System will detect one new hardware and search for proper driver to install.



- (2) Choose the first recommend to install.



(3) Choose setting up from CD ROM.



(4) To execute installation by press "Next".



(5) Press "Finish" to complete installation.

