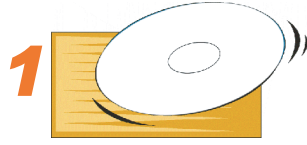
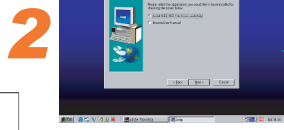


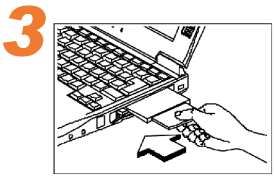
IEEE 802.11b Wireless LAN PC Card Quick Start Guide



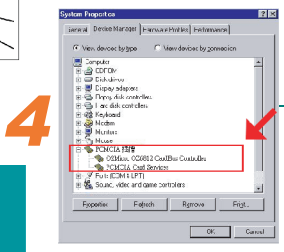
Insert installation CD and it will automatically start the setup program for WLAN utility and driver.



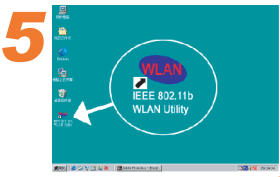
Follow the installation wizard to complete the software installation process; restart your notebook when the process is finished.



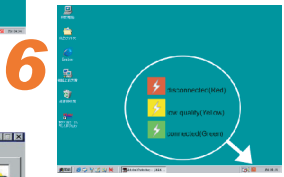
Insert the PC Card into PCMCIA slot of notebook after restarting the notebook.



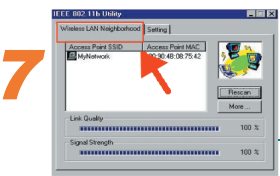
Operation system will detect the PC Card and prompt the driver automatically.



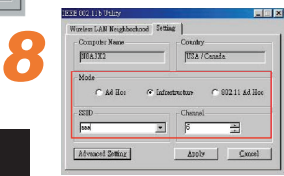
Double click the WLAN icon, and you will find a small icon in the toolbar at the bottom of the screen.



This icon indicates the communication status: if it is green, it means well connected- please go on to step 8; if it is red, it means connection failed- please go on to step 7.



Double click the status icon and then click "wireless LAN neighborhood" option. Please push "rescan" button to search again and then close the function window to return to the main screen. if the status turns green, please go on to step 8. If it remains red, please repeat the installation process from step 1.



Double click the status icon and then select "Setting". Please choose "Infrastructure" mode and type a name in the SSID column (This name should be the same as the network ID of your Access point). Or, if you would like to connect with other stations without an Access Point, please select "802.11 Ad Hoc" mode or "Ad Hoc" mode. (we recommend "802.11 Ad Hoc" for being compatible with all IEEE802.11 protocol compatible products.)



Now you may enter "IE" browser to surf the Internet freely without wires.