

USB Adapter Installation Guide

1



Insert CD into driver and setup WLAN Utility automatically

2



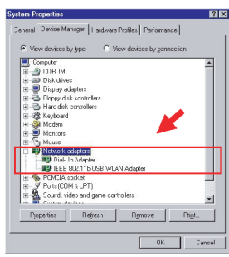
Follow the installation wizard to setup step by step

3



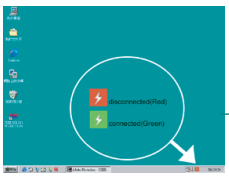
After completing the installation process, insert USB adapter into USB connector in the notebook or desktop.

4



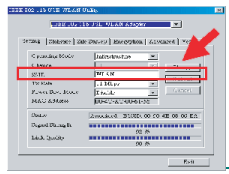
Operation System will detect new device and search driver automatically.

5



Check the toolbar at the bottom of the screen. There is a small icon to indicate the connection status. Red color means no connection and green color means connect (If red color appears, please repeat from step1).

6



Please choose "Infrastructure" mode and type "WLAN" in SSID column. (The password same as AP SSID)

7



Click "IE explorer" to surf the internet.