

Acer WLAN 11b USB Dongle

Quick Start Guide



This product is in compliance with the essential requirements and other relevant provisions of the R&TTE directive 1999/5/EC.



This product has been designed for the 2.4Ghz WLAN network throughout the EC region and Switzerland, with restrictions in France.

Product Name: Acer WLAN 11b USB Dongle

Model Name : WL-B-US4

		COUNTRY	CHANNELS	MAX. OUT POWER	
				INDOOR	OUTDOOR
Spain	2400-2483.5 MHz	1-13	< 100 mW EIRP	< 100 mW EIRP	
France	2400-2454 MHz	1-8	< 100 mW EIRP	< 100 mW EIRP	
France	2454-2483.5 MHz	9-13	< 100 mW EIRP	< 10 mW EIRP	
Italy	2400-2483.5 MHz	1-13	< 100 mW EIRP	< 100 mW EIRP	
UK	2400-2483.5 MHz	1-13	< 100 mW EIRP	< 100 mW EIRP	
Netherlands	2400-2483.5 MHz	1-13	< 100 mW EIRP	< 100 mW EIRP	
Germany	2400-2483.5 MHz	1-13	< 100 mW EIRP	< 100 mW EIRP	
Austria	2400-2483.5 MHz	1-13	< 100 mW EIRP	< 100 mW EIRP	
Belgium	2400-2483.5 MHz	1-13	< 100 mW EIRP	< 100 mW EIRP	
Switzerland	2400-2483.5 MHz	1-13	< 100 mW EIRP	< 100 mW EIRP	
Luxemburg	2400-2483.5 MHz	1-13	< 100 mW EIRP	< 100 mW EIRP	
Ireland	2400-2483.5 MHz	1-13	< 100 mW EIRP	< 100 mW EIRP	
Portugal	2400-2483.5 MHz	1-13	< 100 mW EIRP	< 100 mW EIRP	
Norway	2400-2483.5 MHz	1-13	< 100 mW EIRP	< 100 mW EIRP	
Denmark	2400-2483.5 MHz	1-13	< 100 mW EIRP	< 100 mW EIRP	
Finland	2400-2483.5 MHz	1-13	< 100 mW EIRP	< 100 mW EIRP	
Iceland	2400-2483.5 MHz	1-13	< 100 mW EIRP	< 100 mW EIRP	
Greece	2400-2483.5 MHz	1-13	< 100 mW EIRP	< 100 mW EIRP	
Lichtenstein	2400-2483.5 MHz	1-13	< 100 mW EIRP	< 100 mW EIRP	
Sweden	2400-2483.5 MHz	1-13	< 100 mW EIRP	< 100 mW EIRP	

Acer WLAN 11b USB Dongle Quick Start Guide

Read this Quick Start Guide before installing the Acer WLAN 11b USB Dongle. For complete safety precautions and configuration details, please read the Acer WLAN 11b USB Dongle User's Manual.

PACKAGE CONTENTS

If you buy the Mini USB Adapter, there are some items that will be included in the box.

Item	Location
Acer WLAN 11b USB Dongle	In box
Acer WLAN 11b USB Dongle Quick Start Guide	In box
Acer WLAN 11b USB Dongle CD-ROM	In box
Acer WLAN 11b USB Dongle drivers/utility	On CD
Acer WLAN 11b USB Dongle User's Manual	On CD

If any item is missing, please contact your product provider.

PRODUCT INTRODUCTION

The Acer WLAN 11b USB Dongle provides high-speed wireless link and networking for desktops or notebooks. Users can have wireless connectivity simply by plugging the device into a PC Card slot and installing the driver/utility on a desktop or notebook. When used with WLAN Access Point or WLAN Router, mobile workers can move freely, while maintaining seamless links to the wired LAN.

SYSTEM REQUIREMENTS

Before installation, please check your system in advance and ensure it meets the minimum requirements as described below.

- Processor: Intel Celeron / Pentium II / Pentium III / Pentium IV; AMD Duron / Athlon
- Operating System: Microsoft Windows 98SE / ME / 2000 / XP
- System memory: 32MB at least
- Hard Drive Free Space: 5MB

INSTALLATION OVERVIEW

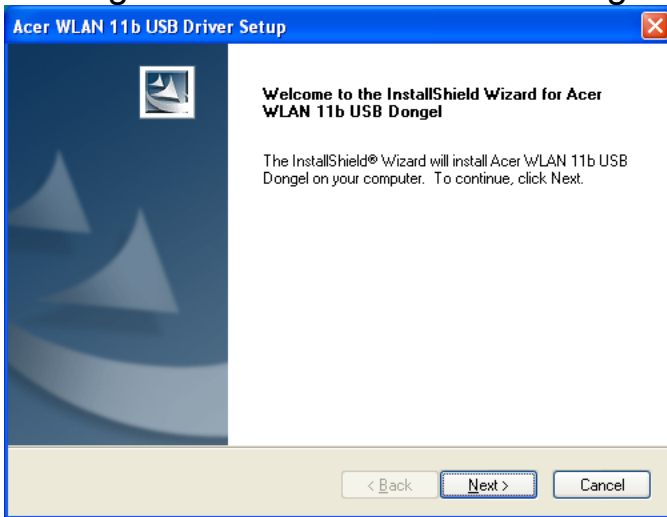
Start your computer and then insert the Installation/Documentation CD in the computer's CD-ROM drive. The auto-run installation menu window will appear and the auto-run installation application will detect the Operating System you are using automatically. Just click the button--with the name of Operating System you are using--in the menu to continue the installation process.

Note1: If the auto-run installation menu window doesn't appear automatically, you can utilize the Windows Explorer to browse CD content and run **install.exe** manually.

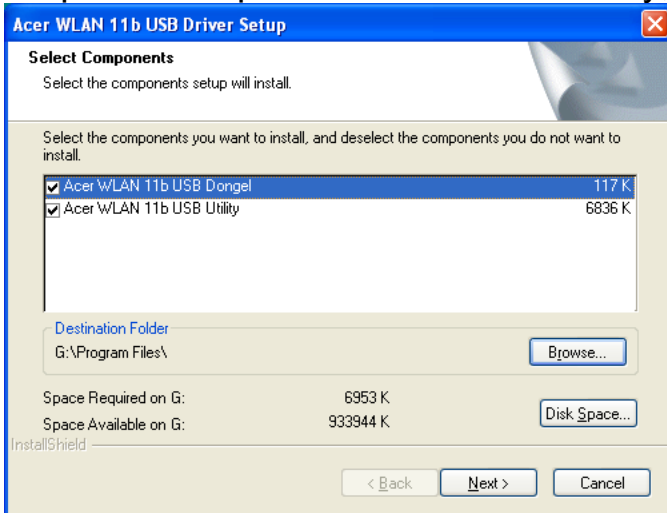
Note2: To prevent potential problems during installation, please use the auto-run installation tool on the CD to finish the driver installation before you plug the Acer WLAN 11b USB Dongle into the computer.

INSTALLATION UNDER WINDOWS 2000 and XP

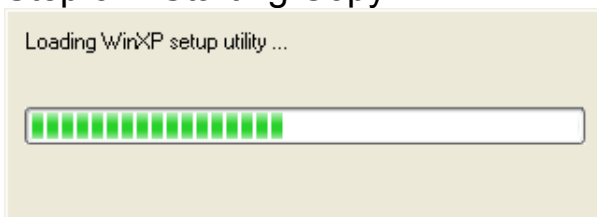
Step 1. Please insert the Device CD Windows XP/2000 was automatically running autorun. The Welcome dialog as below, please click Next



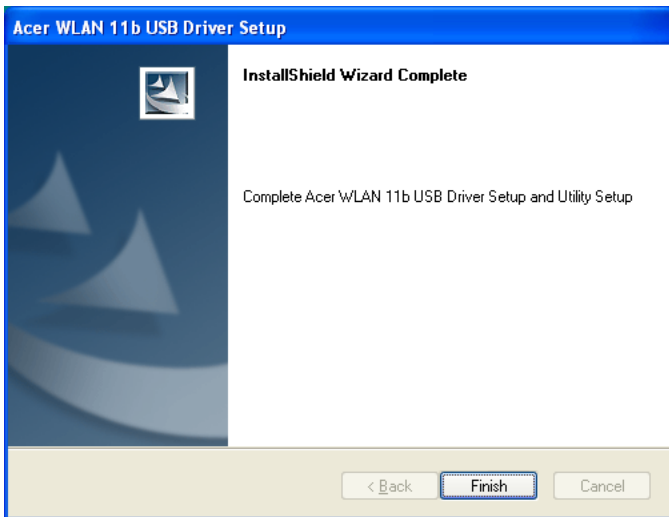
Step 2. Setup WLAN Driver and Utility, please click Next



Step 3. Starting Copy.



Step 4. Click Finish to complete installation.



Step 5. After you install Utility, Hold the Acer WLAN 11b USB Dongle with the logo facing up, and insert the card into the slot, applying just enough pressure to make sure it is fully seated. Windows XP/2000 automatically detects the Acer WLAN 11b USB Dongle.

After finished install driver and utility on your system. Let's starting to setup your wireless card. First of all we will see the connection notice in the right corner

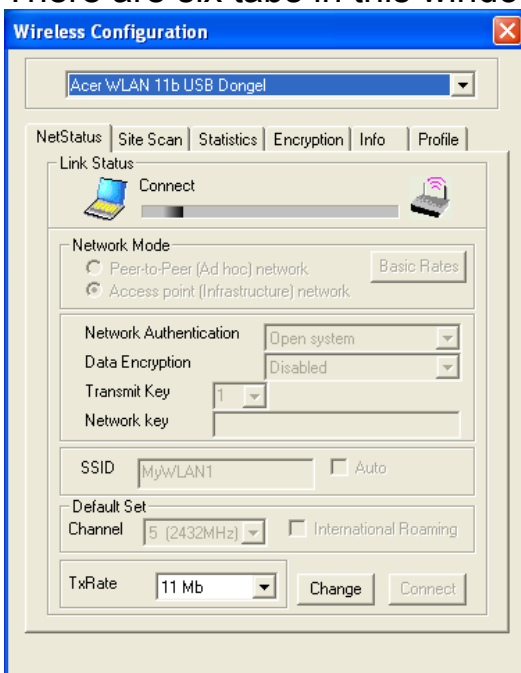


Acer WLAN 11b USB Dongle Configuration

Acer WLAN 11b USB Dongle uses its own management software. All functions controlled by users are provided by this application. When you insert the Acer WLAN 11b USB Dongle into the USB slot, a new icon,



, should appear in the Windows System Tray automatically. Double click that icon and the configuration window will pop up. There are six tabs in this window:



NetStatus Tab

The current status of the Acer WLAN 11b USB Dongle can be found here.

The NetStatus Tab contains several fields where operating parameters of the driver can be viewed or changed. Changes to any of the parameters in this panel can be applied to the driver without a need to restart the computer.

Site Scan Tab

Please wait system to scan or click Re-refresh, all Access Point and Ad-hoc devices within detectable range will be found and their related information will be displayed in the list. You can assign Access Point or Ad-hoc devices which you want connect to. We also can change presently connection just double click SSID from the list.

Statistics Tab

If you have a link with a wireless LAN device, then you can see the real time Link Status, Signal strength, and transmit/receive statistics in this tab. If check the **Turn Radio OFF**, the radio interface will be turn off.

Encryption Tab

You may want an additional measure of security on your wireless network, which can be achieved by using WEP (Wired Equivalent Privacy) encryption. WEP encrypts each frame transmitted from the radio using one of the Keys entered in this panel.

When an encrypted frame is received it will only be accepted if it decrypts correctly. This will only happen if the receiver has the same WEP Key used by the transmitter.

To be written to the driver and registry, each key must consist of hex digits, which means that only digit 0-9 and letter A-F are valid entries.

You can set this to disable, 64 bits or 128 bits.

Info Tab

Info tab shows the Driver version including the detail of Configuration Utility, and NIC firmware version. Users must use this version number when reporting their problems for technical support.

Profile tab

Profile tab allows you to save the information associated with a specific, so you can quickly and easily connect to your network when you are in that location. This page allows you to new, delete and edit your profiles.