

# Release Notes

DRIVER VERSION: 15.33.45.4653 & 15.33.45.64.4653

DATE: June 23, 2017

## SUMMARY:

This document provides information about Intel's Graphics Driver for 3rd Generation Intel® Core™ Processors with Intel HD graphics and select Pentium®/Celeron® Processors with Intel® HD Graphics supporting Microsoft Windows\* 8.1, Microsoft Windows\* 8 and Microsoft Windows\* 7 operating systems.

**NOTE:** Microsoft Windows® 10 drivers for 3rd Generation Intel® Core™ Processors with Intel® HD Graphics 4000 and 3rd Generation Intel® Core™ Processors with Intel® HD Graphics 2500 will include support for Windows Display Driver Model (WDDM) 1.3. For reference, WDDM 1.3 features are available on Microsoft's Web site. This driver will not be digitally signed for Windows® 10, which means that it will not have been certified by Microsoft Windows Hardware Quality Labs (WHQL). Note that Windows® 10 may alert you with a message if a driver is not digitally signed, but you can continue the installation. The driver is being provided as-is with no Intel support for any graphics issues found. Intel advises upgrading to Intel approved Windows 10 products for the best user experience and support.

## CONTENTS OF THE PACKAGE:

- Intel® HD Graphics Driver
- Intel® Display Audio Driver
- Intel® Media SDK Runtime
- Intel® OpenCL\* Driver
- Intel® Graphics Control Panel

## ISSUES FIXED:

- Miscellaneous code optimizations

## KNOWN ISSUES:

- Doom 3 - Corruption is seen in the main menu and in the intro of the game
- Choppy playback when using Arcsoft to play BD in WiDi configuration
- Two Active Taskbars are seen after Hot Unplug DP Monitor in extended mode
- Lost Planet 2 (DX11) - Black Background is seen on game menu
- Angry Birds - Corruption is seen During Maximizing & Minimizing

We continuously strive to improve the quality of our products to better serve our users and appreciate [feedback](#) on any issues you discover and suggestions for future driver releases. If you have an issue to submit, **please follow the guidance/process in this sticky** [Default level information for reporting Graphics issues](#)

## APPLICATIONS TO BE UPDATED:

None

## SUPPORTED PRODUCTS:

### SOFTWARE

This driver supports 32bit or 64bit versions of the following operating systems:

- Microsoft Windows\* 7
- Microsoft Windows\* 8.1
- Microsoft Windows\* 10 (compatibility mode, see note above)

### HARDWARE

All platforms with the following configurations are supported:

Intel® Graphics <sup>1</sup>	DirectX* <sup>2</sup>	OpenGL*	OpenCL*	Intel® Quick Sync Video	Intel® Wireless Display	Intel® Insider™	InTru™ 3D	Intel® Clear Video HD Technology
<b>3rd Generation Intel® Core™ Processors with Intel® HD Graphics 4000/2500</b>	11.0	4.0	1.2	Yes	Yes <sup>3,4</sup>	Yes	Yes	Yes
<b>Intel® Pentium® Processor 1403 v2/1405 v2/ 2020M/2030M/2117U/2129Y/2127U/ A1018/G2010/G2020/G2020T/G2030/ G2030T/G2100T/G2120/G2120T/G2130/ G2140 with Intel® HD Graphics</b>	11.0	4.0	1.2	No	No	No	No	No
<b>Intel® Celeron® Processor 927UE/1000M/ 1005M/1007U/1017U/1019Y/1020E/ 1020M/1037U/1047UE/G1610/G1620/ G1620T/G1610T/G1630 with Intel® HD Graphics</b>	11.0	4.0	1.2	No	No	No	No	No
<b>Intel® Pentium® Processor J1750/ J1850/J2850/N3510/N3520/N3540 N2805/N2806/N2810/N2815/N2820/ N2910/N2920/N2940 with Intel® HD Graphics</b>	11.0	4.0	1.2	No <sup>5</sup>	Yes	No	No	No
<b>Intel® Celeron® Processor J1800/ J2900/ /J1900/N2807/N2808/N2830/N2840/ N2930/ N3530 with Intel® HD Graphics</b>	11.0	4.0	1.2	Yes <sup>5</sup>	Yes	No	No	No

Notes:

If you are uncertain which Intel processor is in your computer, Intel recommends using the [Intel Processor Identification Utility](#) or [Intel Driver Update Utility](#) to identify your Intel processor.

In the Intel® HD Graphics Control Panel (under Options > Options menu > Information Center), the 'Installed DirectX\* version' refers to the operating system's DirectX version. The Information Center's 'Supported DirectX\* Version' refers to the Intel Graphics Driver's supported DirectX version.

Intel Wireless Display native Miracast\* support under Windows\* 8.1 is now supported through the operating system's Charms menu. For more information, see the [Miracast FAQ](#).

Intel® Quick Sync Video is supported on select SKUs including: Intel® Pentium® N3530 processor, Intel® Pentium® N3540 processor, Intel® Celeron® N2830 processor, Intel® Celeron® N2840 processor, Intel® Celeron® N2930

processor, Intel® Celeron® N2940 processor, Intel® Celeron® N2807 processor, Intel® Celeron® N2808 processor, Intel® Pentium® J2900 processor, Intel® Celeron® J1900 processor and Intel® Celeron® J1800 processor.

### Additional Changes:

On some PCs, the computer manufacturer might customize the Intel graphics driver to change features, incorporate customizations, or make other changes to the graphics driver software. Intel® Graphics Drivers downloaded from the Intel Web site will not install on such systems and will generate errors.

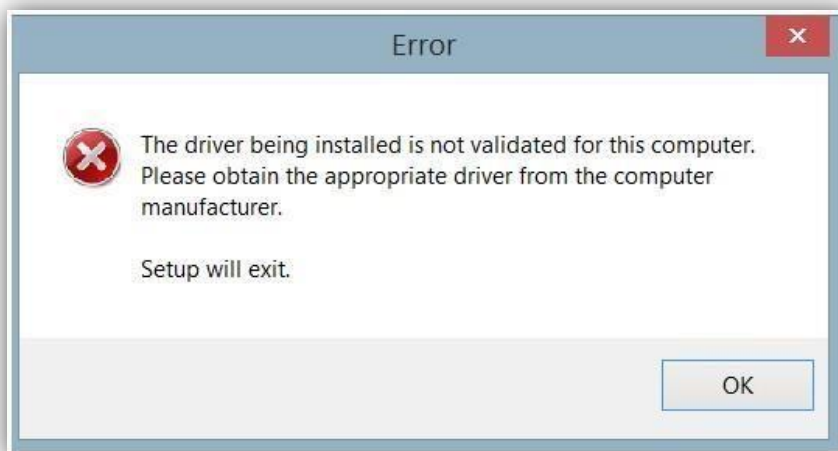
To provide assistance in such cases, the driver now provides a link along with the error message to redirect you to Intel's support page to help identify the right driver for your computer.

Error Message on this driver:



Clicking 'Yes' takes a user to here: <http://www.intel.com/support/graphics/graphics-havedisk> Error

Message on older drivers:



\*Other names and brands may be claimed as the property of others.