

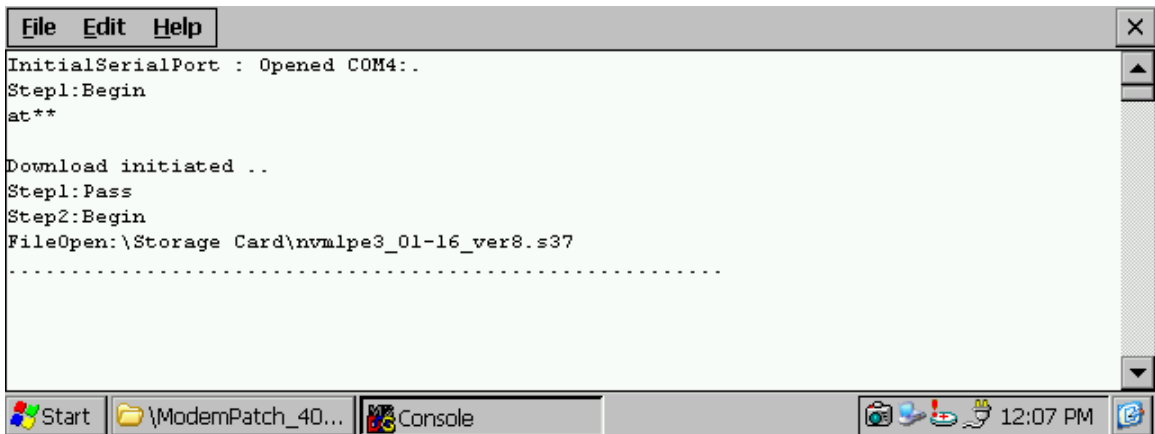
1. Double click on the modem patch ICON. It will be expanded and create “C:\NEC\CE.NET Modem Update” sub-directory.
2. Backup all of your data on the MobilePro before attempting to update your system.
3. Connect the external power adaptor to the system.

Note: The following step can be accomplished using either Active-Sync or removable storage media.

4. Ensure that the following files are in the same folder on the MobilePro 900.
  - a. 0-7ff.s37
  - b. nvmlpe3\_01-16\_ver8.s37
  - c. PATCH9B52NVM.S37
  - d. ComNET\_40611.exe
5. Double tap the “ComNET\_” ICON.



6. The program should open and start running automatically.



Note: Several screens will be displayed during the update process.

7. The following screen will be displayed when the update is complete.



8. Tap the 'OK' to close the window.
9. Remove the external power adaptor.
10. Momentary depress the "Pwr" to shut the system off.
11. Momentary depress the "Pwr" to shut the system back on.
12. The update process is complete and the modem is ready for use.
13. If the files copied to the MobilePro in step 4 can be deleted, as they are not longer needed.