



**NVIDIA®**

Drivers for Windows  
***nView Desktop Manager  
User's Guide***

**Version 28.32**

**NVIDIA Corporation  
March 20, 2002**

Published by  
NVIDIA Corporation  
2701 San Tomas Expressway  
Santa Clara, CA 95050

Copyright © 2002 NVIDIA Corporation. All rights reserved.

This software may not, in whole or in part, be copied through any means, mechanical, electromechanical, or otherwise, without the express permission of NVIDIA Corporation.

Information furnished is believed to be accurate and reliable. However, NVIDIA assumes no responsibility for the consequences of use of such information nor for any infringement of patents or other rights of third parties, which may result from its use. No License is granted by implication or otherwise under any patent or patent rights of NVIDIA Corporation.

Specifications mentioned in the software are subject to change without notice.

NVIDIA Corporation products are not authorized for use as critical components in life support devices or systems without express written approval of NVIDIA Corporation.

NVIDIA, the NVIDIA logo, nForce, nView, GeForce, GeForce2, GeForce3, GeForce2 Pro, GeForce2 Ultra, GeForce2 Go, GeForce2 MX, GeForce2 GTS, GeForce 256, Quadro2, NVIDIA Quadro2, Quadro2 Pro, Quadro2 MXR, Quadro, Quadro DCC, NVIDIA Quadro, Vanta, NVIDIA Vanta, TNT2, NVIDIA TNT2, TNT, NVIDIA TNT, NVIDIA RIVA, RIVA, NVIDIA RIVA 128ZX, and NVIDIA RIVA 128 are registered trademarks or trademarks of NVIDIA Corporation in the United States and/or other countries.

Intel and Pentium are registered trademarks of Intel.

DirectX, Microsoft, Microsoft Internet Explorer logo, Outlook, PowerPoint, Windows, Windows logo, Windows NT, and/or other Microsoft products referenced in this guide are either registered trademarks or trademarks of Microsoft Corporation in the U.S. and/or other countries.

OpenGL is a registered trademark of Silicon Graphics Inc.

Other company and product names may be trademarks or registered trademarks of the respective owners with which they are associated.

# Table of Contents

## 1. Introduction

About this Guide . . . . .	1
nView vs. NVIDIA Display Properties . . . . .	2
Why do I need Desktop Management? . . . . .	2
About nView Desktop Manager . . . . .	3
Multi-Display Support . . . . .	3
Single-Display Support . . . . .	3
Desktop Manager Control Panel . . . . .	3
Key Terms and Concepts . . . . .	4
application . . . . .	4
child window . . . . .	4
control panel . . . . .	4
desktop . . . . .	4
dual-card configuration . . . . .	5
modal dialog box . . . . .	5
modeless dialog box . . . . .	5
multiple-card configuration . . . . .	5
multi-display configuration . . . . .	5
page . . . . .	5
parent window . . . . .	6
single-display configuration . . . . .	6
skin . . . . .	6
window . . . . .	6
Features and Functionality . . . . .	6
Features and Benefits . . . . .	7
Windows Management . . . . .	7
Desktops Management . . . . .	8
Application Management . . . . .	9
Profiles Management . . . . .	9
Zoom, Hot Keys, and Other Features . . . . .	10
Setup Wizard and Online Help . . . . .	10
Application Compatibility . . . . .	11
Examples of Incompatible Applications . . . . .	11
Skinning Utilities: Known Issues . . . . .	11
System Requirements and Support . . . . .	12
Disk Space and Operating Systems . . . . .	12
Software: NVIDIA Display Driver and Internet Explorer . . . . .	12
Hardware: Supported NVIDIA Products . . . . .	13
Multi-Display Configuration: Tips and Requirements . . . . .	14
Multi-Display Mode and Feature Support . . . . .	15
Supported Languages . . . . .	15
Languages Supported in the Desktop Manager Control Panel . . . . .	15

Languages Supported in Online Help . . . . .	16
--	----

## 2. Installation And Uninstallation

Before You Begin . . . . .	17
About nView Desktop Manager Installation . . . . .	17
File Locations and Registry Keys . . . . .	18
Preserving Desktop Manager Settings Before Upgrading Your Software . . . . .	18
Uninstalling the NVIDIA Display Driver Software . . . . .	19

## 3. Using Multi-Display Modes: Windows Dualview And nView Span/Clone

nView Driver Support: Dualview vs. Span/Clone Modes . . . . .	20
Windows Dualview Mode . . . . .	21
Benefits of Using Dualview Mode . . . . .	21
Accessing Windows Dualview Mode . . . . .	21
Windows 2000 . . . . .	22
Windows XP and Windows 9x . . . . .	24
Display Properties Settings: Windows Dualview Modes . . . . .	25
nView Span Modes: Windows 2000/XP . . . . .	26
About Span Modes . . . . .	26
Display Properties Settings: nView Span/Clone Modes . . . . .	27
Windows 2000 . . . . .	27
Windows XP . . . . .	28
Accessing Span Modes . . . . .	30

## 4. Accessing Desktop Manager And Its Settings

Enabling and Disabling Desktop Manager . . . . .	31
Enabling Desktop Manager from the Setup Wizard . . . . .	32
Automatic Startup of Wizard . . . . .	32
Manually Starting the Wizard . . . . .	33
Enabling Desktop Manager from the Profiles Page . . . . .	35
Enabling Desktop Manager from the NVIDIA Desktop Utilities Properties Page . . . . .	36
Enabling Desktop Manager from the NVIDIA QuickTweak Icon . . . . .	37
Enabling the QuickTweak Icon from the Desktop Manager "Desktops" Page . . . . .	37

Enabling the QuickTweak Icon From the Desktop Utilities Page . . . . .	38
Using the NVIDIA QuickTweak Icon to Enable/Disable Desktop Manager . . . . .	39
Accessing Desktop Manager Settings . . . . .	40
Accessing Desktop Manager Settings from Windows Control Panel . . . . .	40
Accessing Desktop Manager Settings from the Windows Desktop Menu . . . . .	40
Accessing Desktop Manager Settings from the NVIDIA Desktop Utilities Page . . . . .	41
Accessing Desktop Manager Settings from the NVIDIA QuickTweak Icon . . . . .	42
Troubleshooting . . . . .	42

## 5. Using the Desktop Manager Setup Wizard

Starting the Setup Wizard. . . . .	44
Multi-Display vs. Single-Display Setup. . . . .	44
Steps to Start the Wizard . . . . .	45
About the Setup Wizard . . . . .	46
Using the Setup Wizard . . . . .	47

## 6. Working With Profiles

About Profiles. . . . .	57
Benefits of Using Profiles . . . . .	58
Loading a Profile . . . . .	60
Creating a Profile. . . . .	60
Saving a Profile . . . . .	60
Deleting a Profile. . . . .	61
Enabling and Disabling Desktop Manager . . . . .	61
Starting the Desktop Manager Setup Wizard. . . . .	61
Copying Profiles For Use on Another Computer . . . . .	61

## 7. Managing Windows And Applications

About Windows. . . . .	62
Summary of Windows Settings. . . . .	63
Window Controls. . . . .	65
Enable Window Spanning Across Monitors . . . . .	65
Enable child window spanning across monitors . . . . .	65
Show full-desktop maximize option on title bar . . . . .	65
Enable Application Position Memory (APM). . . . .	66
Dialog Box Controls . . . . .	67
Enable Dialog Box Repositioning. . . . .	67
Show dialog boxes on monitor n . . . . .	67
Show dialog boxes at cursor. . . . .	67

Show dialog boxes on application's monitor . . . . .	67
User Interface Control . . . . .	67
Enabling System Menu Extensions With nView Options . . . . .	67
nView System Menu Extension Options . . . . .	70
Maximize to Monitor/Desktop. . . . .	70
Send window to. . . . .	70
Send application to . . . . .	71
Transparent (alpha blended) . . . . .	71
Always on top . . . . .	71
Application Position Memory (APM). . . . .	71
Clearing APM. . . . .	72
Visible on all desktops. . . . .	72
Collapse to desktop . . . . .	72
Individual Application Settings (IAS): Enable. . . . .	72
Individual Application Settings (IAS): Edit. . . . .	72
Individual Application Settings: Clear all . . . . .	73
Another Method of Clearing IAS . . . . .	73
Menu Options . . . . .	73
Internet Explorer Options. . . . .	75

## 8. 3D and Other Window Treatment Effects

About Effects . . . . .	76
Summary of Effects Settings. . . . .	77
Window Drawing Enhancements . . . . .	78
Make Windows Maximize Faster . . . . .	78
Make Windows Transparent When Dragged. . . . .	78
Transparency Level . . . . .	79
Zoom Settings. . . . .	79
Zoom Features: Display Properties vs. Desktop Manager . . . . .	79
Use the Mouse Wheel to Change Zoom Levels . . . . .	79
Zoom Window Style. . . . .	80
Magnifying Glass. . . . .	80
Centered on Cursor . . . . .	80
Launch the Zoom Window . . . . .	80
Zoom Window Menus. . . . .	81
Zoom Level . . . . .	81
Zoom Refresh . . . . .	81
Zoom Style . . . . .	82
Using Cursor Style Zoom. . . . .	82
Using Magnifying Glass Style Zoom. . . . .	83

## 9. Using Hot Keys

About Hot Keys . . . . .	86
--------------------------	----

Selecting an Action . . . . .	87
Assigning a Key or Key Combination to an Action 89	
Adding a Hot Key . . . . .	90
Removing a Hot Key. . . . .	90
Removing All Hot Keys . . . . .	90
Active Hot Keys List . . . . .	91

## 10. Desktops Management

About Desktops . . . . .	92
Notes Before You Begin. . . . .	94
Desktops List. . . . .	94
Creating Desktops . . . . .	94
Creating Desktops with the "Add" Option . . . . .	95
Activating or Switching Desktops . . . . .	95
Activating Desktops from the NVIDIA QuickTweak Icon . . . . .	95
Activating Desktops From the Windows Desktop Properties Menu . . . . .	96
Activating Desktops from Desktop Explorer	97
Activating Desktops With Hot Keys. . . . .	97
Renaming Desktops . . . . .	97
Removing Desktops . . . . .	97
Changing Background: Wallpaper . . . . .	97
User Interface Settings . . . . .	99
Show Taskbar QuickTweak Icon . . . . .	99
Show Desktops in Explorer Window . . . . .	100
Using Desktop Explorer . . . . .	101
Creating Desktops from Desktop Explorer	101
Renaming, Deleting, and Activating Desktops from Desktop Explorer . . . . .	102
Accessing the "Desktops" Settings from the Desktop Explorer . . . . .	103
Moving Applications Between Desktops or to a New Desktop in Desktop Explorer . . . . .	104
Accessing Other Application Settings from Desktop Explorer . . . . .	105



# List of Tables



<b>Table 1.1</b>	Supported NVIDIA Products . . . . .	<b>13</b>
<b>Table 1.2</b>	Multi-Display Mode and Feature Support . . . . .	<b>15</b>



# List of Figures



<b>Figure 1.1</b>	Desktop Manager “Profiles” Page: after Enabling Desktop Manager . . . . .	7
<b>Figure 3.1</b>	Multiple Display Devices in Windows Dualview Mode . . . . .	22
<b>Figure 3.2</b>	NVIDIA Desktop Utilities Properties Page: Enabling Dualview in Windows 2000 . . . . .	23
<b>Figure 3.3</b>	Windows Display Settings in Dualview Mode (1) . . . . .	25
<b>Figure 3.4</b>	Windows Display Settings in Dualview Mode (2) . . . . .	25
<b>Figure 3.5</b>	Multiple Displays in nView Horizontal Span Mode . . . . .	26
<b>Figure 3.6</b>	Windows 2000: Display Settings for nView Span (& Clone) Modes . . . . .	27
<b>Figure 3.7</b>	Windows XP: Display Settings in Dualview Mode with Second Display Disabled (1) . . . . .	28
<b>Figure 3.8</b>	Windows XP: Display Settings in Dualview Mode With Second Display Disabled (2) . . . . .	29
<b>Figure 3.9</b>	Windows XP: Display Settings in Dualview Mode With Second Display Disabled (3) . . . . .	29
<b>Figure 3.10</b>	Windows 2000/XP: nView Display Modes . . . . .	30
<b>Figure 4.1</b>	Properties Menu with nView Settings . . . . .	32
<b>Figure 4.2</b>	Windows Control Panel with nView Desktop Manager Option. . . . .	33
<b>Figure 4.3</b>	Profiles Page Before Desktop Manager is Enabled . . . . .	34
<b>Figure 4.4</b>	Profile Page After Desktop Manager is Enabled) . . . . .	34
<b>Figure 4.5</b>	NVIDIA Desktop Utilities Properties Page . . . . .	36
<b>Figure 4.6</b>	Desktop Manager: Desktops Page. . . . .	37
<b>Figure 4.7</b>	NVIDIA Desktop Utilities Properties Page . . . . .	38
<b>Figure 4.8</b>	NVIDIA QuickTweak Icon . . . . .	39
<b>Figure 4.9</b>	nView Desktop Manager Options through QuickTweak Icon. . . . .	39
<b>Figure 4.10</b>	nView Desktop Manager Options through QuickTweak Icon . . . . .	39
<b>Figure 4.11</b>	NVIDIA Desktop Utilities Properties Page . . . . .	41
<b>Figure 4.12</b>	NVIDIA QuickTweak Icon. . . . .	42
<b>Figure 4.13</b>	nView Desktop Manager Options through QuickTweak Icon . . . . .	42
<b>Figure 5.1</b>	nView Desktop Manager: After nView Load . . . . .	45
<b>Figure 5.2</b>	Profiles Page Before Desktop Manager is Enabled . . . . .	45
<b>Figure 5.3</b>	nView Desktop Manager (Profiles) Control Panel After nView is Enabled . . . . .	46
<b>Figure 5.4</b>	nView Desktop Manager Wizard: Introduction . . . . .	48
<b>Figure 5.5</b>	nView Desktop Manager Wizard: Features Overview . . . . .	48
<b>Figure 5.6</b>	nView Desktop Manager Wizard: Using Desktop Manager . . . . .	49
<b>Figure 5.7</b>	nView Desktop Manager Wizard: Loading and Using a Profile . . . . .	49
<b>Figure 5.8</b>	nView Desktop Manager Wizard: Window Spanning Control . . . . .	50
<b>Figure 5.9</b>	nView Desktop Manager Wizard: Dialog Repositioning . . . . .	50
<b>Figure 5.10</b>	nView Desktop Manager Wizard: Application Position Memory . . . . .	51
<b>Figure 5.11</b>	nView Desktop Manager Wizard: System Menu Extension . . . . .	51
<b>Figure 5.12</b>	nView Desktop Manager Wizard: Number of Desktops (1) . . . . .	52

<b>Figure 5.13</b>	nView Desktop Manager Wizard: Number of Desktops (2) . . . . .	<b>52</b>
<b>Figure 5.14</b>	nView Desktop Manager Wizard: Desktop Names . . . . .	<b>53</b>
<b>Figure 5.15</b>	nView Desktop Manager Wizard: Turning on the Explorer Extension . . . . .	<b>53</b>
<b>Figure 5.16</b>	nView Desktop Manager Wizard: Window Effects (Transparency) . . . . .	<b>54</b>
<b>Figure 5.17</b>	nView Desktop Manager Wizard: Fast Windows Maximize . . . . .	<b>54</b>
<b>Figure 5.18</b>	nView Desktop Manager Wizard: Completing Setup . . . . .	<b>55</b>
<b>Figure 5.19</b>	Desktop Explorer Prompt . . . . .	<b>55</b>
<b>Figure 5.20</b>	Desktop Explorer Extension in Windows Explorer . . . . .	<b>56</b>
<b>Figure 6.1</b>	Profiles Settings Before Enabling Desktop Manager . . . . .	<b>59</b>
<b>Figure 6.2</b>	Desktop Manager Profiles Page After Enabling Desktop Manager. . . . .	<b>59</b>
<b>Figure 7.1</b>	Desktop Manager: Windows Settings (DualView) . . . . .	<b>63</b>
<b>Figure 7.2</b>	Desktop Manager: Windows Page (nView Span mode). . . . .	<b>64</b>
<b>Figure 7.3</b>	nView Application Title Bar Maximize option . . . . .	<b>65</b>
<b>Figure 7.4</b>	Desktop Manager: Accessing nView Extensions Menu Options (1) . . . . .	<b>68</b>
<b>Figure 7.5</b>	Desktop Manager: Accessing nView Extensions Menu Options (2) . . . . .	<b>69</b>
<b>Figure 7.6</b>	Desktop Manager: nView Extensions Menu Options (1) . . . . .	<b>69</b>
<b>Figure 7.7</b>	Desktop Manager: nView Extensions Menu Options (2) . . . . .	<b>70</b>
<b>Figure 7.8</b>	Desktop Manage: Individual Application Settings Dialog Box. . . . .	<b>73</b>
<b>Figure 7.9</b>	nView Desktop Manage: Windows . . . . .	<b>73</b>
<b>Figure 7.10</b>	nView Menu Extensions Options Dialog Box . . . . .	<b>74</b>
<b>Figure 7.11</b>	nView Menu Extensions for Internet Explorer (6.0 or later version) . . . . .	<b>75</b>
<b>Figure 8.1</b>	Desktop Manager: "Effects" Page(1) . . . . .	<b>77</b>
<b>Figure 8.2</b>	Desktop Manager: "Effects" Page (2). . . . .	<b>77</b>
<b>Figure 8.3</b>	Zoom Level Menu. . . . .	<b>81</b>
<b>Figure 8.4</b>	Zoom Refresh Menu. . . . .	<b>81</b>
<b>Figure 8.5</b>	Zoom Style Menu (Centered on cursor). . . . .	<b>82</b>
<b>Figure 8.6</b>	Zoom Style Menu (Magnifying glass). . . . .	<b>82</b>
<b>Figure 8.7</b>	Cursor Style Zoom Window. . . . .	<b>82</b>
<b>Figure 8.8</b>	Cursor Style Zoomed Area in Zoom Window. . . . .	<b>83</b>
<b>Figure 8.9</b>	Magnifying Glass Style Zoom Window. . . . .	<b>84</b>
<b>Figure 8.10</b>	Magnifying Glass Style Zoom Window Over Zoom Area. . . . .	<b>84</b>
<b>Figure 8.11</b>	Magnifying Glass Style Zoomed Area in Zoom Window . . . . .	<b>85</b>
<b>Figure 9.1</b>	Desktop Manager: "Hot Keys" Page . . . . .	<b>87</b>
<b>Figure 9.2</b>	Hot Keys: Entering Keys . . . . .	<b>89</b>
<b>Figure 9.3</b>	Hot Keys Add Properties . . . . .	<b>90</b>
<b>Figure 9.4</b>	Active Hot Keys List . . . . .	<b>91</b>
<b>Figure 10.1</b>	Desktop Manager: "Desktops" Page . . . . .	<b>93</b>
<b>Figure 10.2</b>	NVIDIA QuickTweak Icon. . . . .	<b>95</b>
<b>Figure 10.3</b>	Accessing Desktops Through the QuickTweak Icon. . . . .	<b>96</b>



<b>Figure 10.4</b>	Accessing Desktops From the Properties Menu . . . . .	<b>96</b>
<b>Figure 10.5</b>	Changing Background (Wallpaper) for a Desktop . . . . .	<b>98</b>
<b>Figure 10.6</b>	“Desktops” Page After Changing Background (Wallpaper) . . . . .	<b>99</b>
<b>Figure 10.7</b>	Desktop Explorer Prompt . . . . .	<b>100</b>
<b>Figure 10.8</b>	Desktop Explorer Extension in Windows Explorer . . . . .	<b>101</b>
<b>Figure 10.9</b>	Desktop Explorer: Main Properties Menu . . . . .	<b>102</b>
<b>Figure 10.10</b>	Entering a Desktop Name . . . . .	<b>102</b>
<b>Figure 10.11</b>	Desktop Explorer: Desktop Properties Menu . . . . .	<b>103</b>
<b>Figure 10.12</b>	“Desktops” Page Displaying an Added Desktop . . . . .	<b>104</b>
<b>Figure 10.13</b>	Desktop Explorer: “Send to Desktop n” Application Settings . . . . .	<b>105</b>
<b>Figure 10.14</b>	Desktop Explorer: After Setting “Visible on all desktops” . . . . .	<b>106</b>
<b>Figure 10.15</b>	Desktop Explorer: “Collapse to Desktop n” Application Setting . . . . .	<b>106</b>
<b>Figure 10.16</b>	Desktop Explorer: After Setting “Collapse to Desktop n” . . . . .	<b>107</b>

## CHAPTER

## 1

**INTRODUCTION**

The following topics are discussed in this chapter:

- “About this Guide” on page 1
- “nView vs. NVIDIA Display Properties” on page 2
- “Why do I need Desktop Management?” on page 2
- “About nView Desktop Manager” on page 3
- “Key Terms and Concepts” on page 4
- “Features and Benefits” on page 7
- “Application Compatibility” on page 11
- “System Requirements and Support” on page 12

## About this Guide

---

This is a *User’s Guide* addressed to end users of the NVIDIA® nView™ Desktop Manager, which is a desktop and application management tool that runs on Windows operating systems.

You may use Desktop Manager with or without System Administrator access privileges.

## nView vs. NVIDIA Display Properties

---

The NVIDIA Display Driver software includes two software components: *nView* and *NVIDIA Display Properties*.

- **nView** represents a collection of multi-display technologies encompassing driver support, multi-display GPU architecture, and desktop management support. The primary nView component is the Desktop Manager, which is a user-level application utility that focuses on making you more productive when working on your Windows desktop.
- **NVIDIA Display Properties** is NVIDIA's control panel-based user interface (accessible from the Windows Display Properties Settings "Advanced" option) for configuring advanced display properties of the current release of the NVIDIA Windows Display Driver software.

♪ *The NVIDIA Display Properties also includes the nView properties page, which lets you configure multi-display support for Clone and/or Span modes if you are using an NVIDIA GPU-based card that supports multiple displays. See Table 1-1 "Supported NVIDIA Products". Also see the "NVIDIA Display Properties User's Guide".*

## Why do I need Desktop Management?

---

As users run more and more applications and process even more information, their screen sizes are getting larger and larger. Larger screen area simply makes users more productive.

One of the more cost effective and common ways of increasing screen area is to use multiple displays and/or multiple desktops (for single-display users), which allow you to place your applications on multiple displays having ready and immediate access to the information they contain.

While large screens and multiple displays and desktops are a great way of increasing your visible work area, these larger desktops start becoming more difficult to manage. Once simple operations such as finding your mouse cursor or even a window can become very time-consuming when you have to hunt through several screens.

In addition, using multiple displays results in additional issues such as the screen split between two displays – windows that are placed on this screen split are extremely difficult to read. So, while larger desktop areas promise to dramatically increase your productivity, there are user interface issues that can make it difficult to use at times.

A "desktop manager" manages your large desktop and takes care of many of the user interface issues which result from moving to a larger desktop area. You can

think of a desktop manager as being an extension of the windows user interface tailored for large desktops.

## About nView Desktop Manager

---

nView Desktop Manager supports both single-display and multi-display configurations running with single-display, dual-display, or multiple graphics cards based on NVIDIA GPUs.

### Multi-Display Support

---

The Desktop Manager feature set primarily focuses on multi-display use by workstation users in finance, corporate, digital content creation (DCC) and similar organizations as well as in the mobile (laptop) markets. Therefore, to take advantage of the full feature set of the Desktop Manager, you need a multi-display configuration. With multiple displays, you can view a single application as a large window stretching across several displays, or you can display different applications on each monitor. Using a multi-display configuration is an efficient and cost-effective way to increase the size of your computer display area, commonly called the “desktop”.

### Single-Display Support

---

Desktop Manager is designed for broad applications across NVIDIA’s wide range of product lines and markets. Therefore, single-display users can also take advantage of many of its features. Although you cannot use multi-display features in a single-display configuration, you can create multiple desktops and use hot keys and windows effects.

### Desktop Manager Control Panel

---

Desktop Manager contains a settings control panel, which is independent of the properties that are accessed through the Display Properties Settings page in Windows.

Once Desktop Manager is enabled, the Desktop Manager control panel ([Figure 1.1](#)) is easily accessible from a variety of areas on your desktop. For example, it is available from Windows Control Panel, the properties menu when you right click on your desktop, or from the QuickTweak taskbar icon, to name a few.

When you open the Desktop Manager control panel, the default Profiles “page” is displayed. The Profile, Windows, Effects, Hot Keys, and Desktops “tabs” (shown in [Figure 1.1](#)) correspond to settings pages, which allow you to

configure key Desktop Manager features as described in [“Features and Benefits”](#) on page 7.

## Key Terms and Concepts

---

Desktop Manager can manage and control many items on your desktop. Generally, it operates on two types of desktop objects – “windows” or “applications”.

### **application**

An application (or program) can have any number of windows. Some applications have only a single window such as Calculator or Notepad. Other applications can have many windows such as Outlook where you can open several E-mail windows, have your Inbox open, open calendars, etc.

Desktop Manager can perform operations on applications as well as windows. In the case of applications, the operation is performed on every window that is part of that application.

If you run multiple copies of an application, any operation you perform on a copy of the application will apply to every copy of the application that is running.

### **child window**

Child window refers to any “spawned” window of the main or “parent” application window. For example, in the Microsoft Outlook application, the main window is your “Inbox” while an e-mail message window that you open or create is a “child” window.

### **control panel**

Control panel refers to windows that are directly or indirectly accessible from the Windows Control Panel group. The nView Desktop Manager “control panel” is the window from which you can configure key desktop and window management settings.

Once Desktop Manager is enabled, the Desktop Manager control panel ([Figure 1.1](#)) is easily accessible from a variety of areas on your desktop. For example, it is available from Windows Control Panel, the properties menu when you right click on your desktop, or from the QuickTweak taskbar icon, to name a few.

### **desktop**

Desktop is the on-screen work area on which windows, icons, menus, and dialog boxes appear. A user can create multiple displays on single-display systems or multi-display systems, thereby increasing their work area.

## dialog box

Dialog boxes are user-input windows that contain command button and various kinds of options through which you can carry out a particular command or task. For example, in a Windows application Save As dialog box, you must indicate in which folder and under what name the document should be saved. The Desktop Manager Setup Wizard described in Chapter 5 shows a series of “pages” in Figure 5.5 through Figure 5.18, which are one kind of dialog box. In Chapter 7, Figure 7.8 shows another example of a dialog box.

Also see the definition of “[modal dialog box](#)” and “[modeless dialog box](#)” on this page.

## dual-card configuration

A setup where two or more display devices are connected to two NVIDIA GPU-based graphics cards installed in the computer.

## modal dialog box

A dialog box that puts you in the state or “mode” of being able to work only in the dialog box. You cannot move a modal dialog box; it can be removed only by clicking its buttons.

## modeless dialog box

A dialog box that resembles a document window without a collapse box. You can move a modeless dialog box, make it inactive and active again, and close it like a document window.

## multiple-card configuration

A setup where two or more display devices are connected to two (or more) NVIDIA GPU-based graphics cards in the computer.

## multi-display configuration

A setup where two or more display devices are connected to either a dual-display NVIDIA GPU-based graphics card in the computer; *or* two (or more) NVIDIA GPU-based graphics cards in the computer.

## page

The window associated with individual Desktop Manager control panel tabs (i.e., Profiles, Effects, Windows, Hot Keys, and Desktops) is called a “page” in this guide. For example, “Profiles page”, “Windows page”, and so on.

## parent window

Parent window refers to the “main” default launch window that you see when an application opens. For example, in the Microsoft Outlook application, the main window is your “Inbox”, since that’s the first window that launches when you open Outlook.

## single-display configuration

A setup where only one display device is connected to the NVIDIA GPU-based graphics card in your computer.

## skin

A file that customizes the look and feel of the Windows graphical user interface.

## window

A window is any independent window on your desktop. Applications such as Outlook or Explorer may have several windows which are all part of the same application. Windows can be dragged around the screen, opened and closed, and resized. Desktop Manager allows you to do even more with windows such as make them transparent or force them always to be on top of other windows.

## Features and Functionality

---

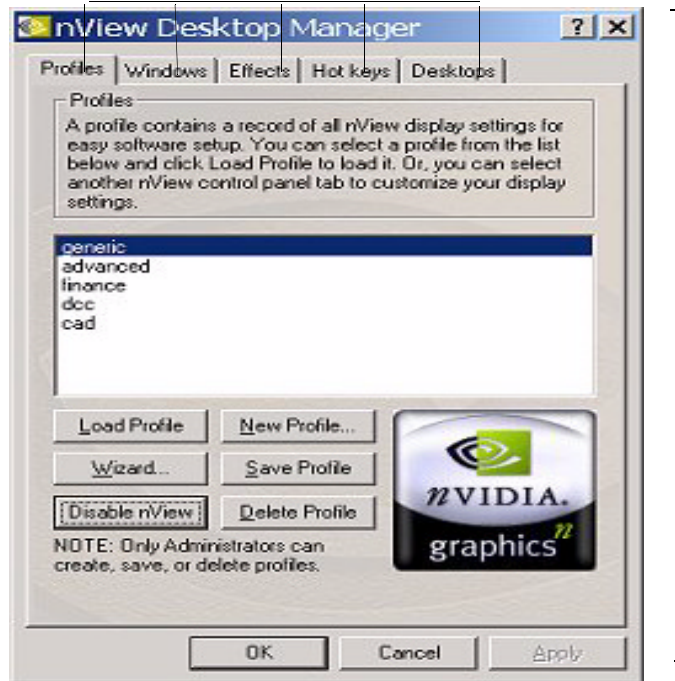
Desktop Manager also offers a wide range of functions and user interface features, which can be used to be more productive on any computer system. Sample features include:

- Multiple-desktop support to extend your desktop space
- Transparency support to the user interface so that you see more windows on your desktop
- Hot key support so that you can perform operations in a single keystroke
- Extension of the features of common business applications, such as Internet Explorer, to add more value to these applications.

The complete feature set and benefits are described in [“Features and Benefits” on page 7](#).

**Figure 1.1** Desktop Manager “Profiles” Page: *after* Enabling Desktop Manager

**Tabs:** Profile, Windows, Effects, Hot Keys, and Desktops



**Page:** Profiles

## Features and Benefits

The Desktop Manager application engine consists of several modules that manage windows, desktops, displays, applications, hot keys, and special effects. This section provides an overview of the key functions in terms of these modules.

For details on these features and how to use them, refer to individual chapters in this guide.

*♪ A few features may be restricted to users with System Administrator access privileges and will be noted as such, where applicable in this guide.*

## Windows Management

For complete details on using Windows Management features, see [“Managing Windows And Applications”](#) on page 62.

**Multi-Display** features allow you to



- Configure your system to prevent windows from stretching across (spanning) displays.
- Configure where dialog boxes pop up on your desktop. You can pop them up by your cursor or on a specific monitor.
- Adds a custom maximize option to your windows – this option allows you to maximize windows to a single monitor or to the entire desktop.

**Other features** allow you to

- Extend the style of every window in your system. Using Desktop Manager, you can turn windows transparent or force them to always be on top of other windows.
- Extend the system menu of every window in your system with the style options above plus options to move windows to different desktops and displays.
- When using multiple desktops, set a window to be visible on every desktop for those windows you always want to see.

## Desktops Management

---

For complete details on using Desktops Management features, see [“Desktops Management” on page 92](#).

Using the features from the “Desktops” page on your Desktop Manager control panel, you can do the following:

- Create up to 32 different desktops, each with its own background.
- Open and move applications between different desktops and switch between desktops with a single keystroke
- Use multiple desktops to quickly reduce the clutter on your desktop – you can group similar applications on different desktops and quickly switch between them.
- Manage your desktop in several ways to suite your style. You can access and, therefore, switch between desktops in several ways, including:
  - Hot keys
  - Right clicking from any desktop
  - From your folder tree in Windows Explorer
  - From options from a QuickTweak icon on your Windows taskbar

## Application Management

---

The “Application Management” module ties the “Windows Management” and the “Desktops Management” modules together with your applications. Application management features are explained in [“Managing Windows And Applications” on page 62](#). Using the application management functionality of Desktop Manager, you can do the following tasks:

- Perform operations on entire applications such as moving an entire application to a desktop or to a monitor.
- Set up your Window Manager to function differently for different applications. For example, you may never want a Word window to span multiple displays; however, you may want a spreadsheet, such as Excel windows, to span multiple monitor so you can see all the columns.
- Save all your special Desktop Manager settings for an application when you close it and restore them when you reopen the application. For example, if you enable the “Application Position Memory” (APM) feature, the application manager can remember if you closed Word on your second desktop and whether or not the Word window was transparent when you closed it. When you re-open Word, it will automatically open on your second desktop and have transparency enabled.
- Extend certain applications. While every window under Desktop Manager has an extended menu giving options such as transparency or desktop visibility, certain applications such as Internet Explorer 5.0 have additional nView menu options allowing you to be more productive with the application.

## Profiles Management

---

Profiles management features are discussed in [“Working With Profiles” on page 57](#).

📖 *Several features related to “profiles” may be restricted to users with System Administrator access privileges.*

You can quickly set up the Desktop Manager using a module called “Profiles”, a separate page in the Desktop Manager control panel.

Desktop Manager lets you save all of its settings including desktop, window, and application settings to a data file called a “profile”. This profile includes all of your Desktop Manager settings – even application memory for your applications. You can then reload your profile on any computer at any point in the future. If you switch computers, upgrade your operating system, or are

configuring an office, you can simply save all your settings to a profile and then load those settings on any computer that you want.

You can save as many profiles as you like for different operating modes. If you use a laptop, you may want Desktop Manager to be set up differently when you are docked than when you are not docked. Using profiles, you can create a docked and undocked profile and switch between them. You can even set up a hot key to load a profile so you can switch with a single keystroke.

Desktop Manager comes with several pre-defined profiles to get you started quickly. These profiles contain the basic settings for different user levels and industries. You can start with one of these pre-defined profiles and tailor it to your own needs.

## Zoom, Hot Keys, and Other Features

---

Special effects such as “zooming” and “transparency” are discussed in [“3D and Other Window Treatment Effects” on page 76](#). Hot Keys are discussed in [“Using Hot Keys” on page 86](#).

The special “Effects” and “Hot Key” modules are available from the Desktop Manager control panel. These modules offer additional enhancements, including:

- Faster opening and closing of windows
- A setting that automatically turns windows “transparent” when you drag them. This allows you to quickly see what is underneath a window without having to minimize or move it.
- A “zoom” tool which lets you see a zoomed up view of the area around the cursor. You can even use the zoom tool like a magnifying glass and drop it on top of what you want to magnify on the desktop
- A full set of hot keys. Virtually every action from toggling a window to be transparent to jumping to a different desktop can be assigned to a hot key.

## Setup Wizard and Online Help

---

- A **Setup Wizard** help you get started with Desktop Manager.
- On-line **Help** displays context-sensitive help for Desktop Manager settings options.

# Application Compatibility

---

While the vast majority of applications are compatible with desktop and windows management, there are some applications that are not. If Desktop Manager detects these types of applications, it will not attempt to manage them. Depending upon the level of compatibility of the application, Desktop Manager may offer varying levels of functionality. Functionality that may be disabled for these applications includes support for the transparency and application position memory (APM) feature, window position management, nView system menu extensions, and/or multiple desktop support.

If an application window supports the nView system menu extensions but does not support certain Desktop Manager functions, a menu item called “**About this app...**” is added to the application’s nView system menu extension. In this case, you can click on this menu item to display information about the features that have been disabled for the application.

♪ *If an application window does not support the nView system menu extensions, then, as a result, the menu item called “**About this app...**” will not be available. In this case, the Desktop Manager window management features will simply be disabled for the application window.*

## Examples of Incompatible Applications

---

Examples of application windows that do not support certain Desktop Manager features include:

- The DOS prompt box under Windows 2000/XP. *All desktop management features are disabled.*
- Solitaire and Freecell under Windows Me. *All window management features are disabled.*
- Microsoft PowerPoint. *The transparency feature is disabled.*

## Skinning Utilities: Known Issues

---

If you use skins, Desktop Manager has been tested with several commonly available “skinning” utilities with no known compatibility issues other than those listed below.

- Some skins *do not* expose the application window’s system menu on its window frame (title bar). As a result, the nView system menu extension option cannot be accessed from the application window’s title bar.

However, you can still access the system menu extension (including the nView extensions) by right clicking the application on the taskbar. For details on the methods available for accessing an application's system menu, see [“Enabling System Menu Extensions With nView Options”](#) on page 67.

- The following is a known compatibility issue, which occurs when the Microsoft Office XP installation wizard is running in conjunction with Desktop Manager and StarDock's WindowBlinds.

If you are running both Desktop Manager and WindowBlinds, to work around this problem, it is recommended that you disable *either* Desktop Manager *or* WindowBlinds *before* installing Microsoft Office XP.

## System Requirements and Support

---

This section contains the following topics:

- [“Disk Space and Operating Systems”](#) on page 12
- [“Software: NVIDIA Display Driver and Internet Explorer”](#) on page 12
- [“Hardware: Supported NVIDIA Products”](#) on page 13
- [“Multi-Display Configuration: Tips and Requirements”](#) on page 14
- [“Multi-Display Mode and Feature Support”](#) on page 15
- [“Supported Languages”](#) on page 15

### Disk Space and Operating Systems

---

The release of nView Desktop Manager requires 2 MB of disk space and supports the following operating systems:

- Microsoft Windows XP® (Home and Professional Editions)
- Microsoft® Windows 2000
- Microsoft Windows 98 ((Microsoft DirectX 5)
- Microsoft Windows Millennium Edition (Me)

♪ *Windows 98 and Windows Me are collectively called Windows 9x in this guide.*

### Software: NVIDIA Display Driver and Internet Explorer

---

- NVIDIA Display Driver

You must have a current version of the *NVIDIA Display Driver software* for your Windows operating system. For further information on driver installation, see “[Installation And Uninstallation](#)” on page 17.

- Microsoft Internet Explorer (6.0 or later version)

You must have installed *Microsoft Internet Explorer 6.0 or later version* for the “Desktop Explorer” feature to work and access specific nView system menu extension options available for Internet Explorer. See “[Internet Explorer Options](#)” on page 75.

## Hardware: Supported NVIDIA Products

Table 1.1 lists the NVIDIA products supported by Desktop Manager,

*♪ Some Desktop Manager features support only certain NVIDIA GPUs, which are noted in this table and where applicable in this guide.*

*♪ The Desktop Manager “transparency” feature works best with NVIDIA GPUs that have higher performance than GeForce2 GTS.*

**Note:** Products marked with (\*) indicate that they support the TwinView feature in their multi-display versions.

**Table 1.1** Supported NVIDIA Products

NVIDIA Desktop Products	NVIDIA Workstation Products	Number of Displays Supported Per Card
nForce 620-D nForce 420-D nForce 220		1
GeForce4 440 Go * GeForce4 420 Go *	Quadro4 500 GoGL*	2
GeForce4 Ti 4600 * GeForce4 Ti 4400 * GeForce4 Ti 4200 * GeForce4 MX 460 * GeForce4 MX 440 * GeForce4 MX 420 *	Quadro4 900 XGL * Quadro4 750 XGL * Quadro4 700 XGL * Quadro4 550 XGL * Quadro4 200 NVS *	2 — applies to all GPUs in this category.
	Quadro4 400 NVS *	4
GeForce3 GeForce3 Ti 500 GeForce3 Ti 200	Quadro DCC	1

**Table 1.1** Supported NVIDIA Products (continued)

<b>NVIDIA Desktop Products</b>	<b>NVIDIA Workstation Products</b>	<b>Number of Displays Supported Per Card</b>
GeForce2 Ti GeForce2 Ultra GeForce2 Pro GeForce2 GTS	Quadro2 Pro	<b>1</b>
GeForce2 MX 400 * GeForce2 MX 200 * GeForce2 MX 100 * GeForce2 MX *	Quadro2 MXR * Quadro2 Go *	<b>2</b>
GeForce2 Go *	Quadro2 Go *	<b>2</b>
	Quadro2 EX	<b>1</b>
GeForce 256	Quadro	<b>1</b>
RIVA TNT2 family RIVA TNT2 Ultra RIVA TNT2 Pro RIVA TNT2 RIVA TNT2 M64 NVIDIA Vanta NVIDIA Vanta LT	---	<b>1</b>
RIVA TNT	---	<b>1</b>

## **Multi-Display Configuration: Tips and Requirements**

- When using multi-display configuration under Windows 2000/XP, running Windows in “Dualview” mode is strongly recommended.
- When running Windows with multiple cards (i.e., two or more NVIDIA GPU-based graphics card are installed in your computer), note the following:
  - Using cards based on the *same* NVIDIA GPU is strongly recommended.
  - The same NVIDIA driver (version) *must* be installed for each card.

For a detailed discussion of using multi-display modes, see “Using Multi-Display Modes: Windows Dualview And nView Span/Clone” on page 20.

## Multi-Display Mode and Feature Support

Table 1.2 list details of supported operating system modes and Desktop Manager features for Windows 2000, XP, and 9x.

**Table 1.2** Multi-Display Mode and Feature Support

Supported Modes and Features	Windows XP	Windows 2000	Windows 9x
Is there Windows Dualview support (default) for up to nine (9) display devices?	Yes	Yes	Yes
Is nView Clone mode supported?	Yes	Yes	Yes
Are nView Span (Horizontal/Vertical) modes supported? <b>Note:</b> In Span mode, a maximum of two (2) display devices are supported.	Yes	Yes	NA
Does switching between nView Span/Clone mode and Windows Dualview mode require restarting your computer?	No	Yes	NA
Hardware Acceleration? <ul style="list-style-type: none"> <li>• DirectX operations are accelerated if window is constrained to a single monitor otherwise operation is redirected to the software.</li> <li>• OpenGL support</li> </ul>	Yes	Yes	Yes
Are all nView Desktop Manager features supported?	Yes	Yes	Yes, except Transparency

## Supported Languages

### Languages Supported in the Desktop Manager Control Panel

NVIDIA nView Desktop Manager supports the following languages in its control panel:

English (USA)	German	Portuguese (Brazil)
Arabic	Greek	Portuguese (Euro/Iberian)
Chinese (Simplified)	Hebrew	Russian
Chinese (Traditional)	Hungarian	Slovak
Czech	Italian	Slovenian
Danish	Japanese	Spanish
Dutch	Korean	Swedish
Finnish	Norwegian	Turkish
French	Polish	



## Languages Supported in Online Help

NVIDIA nView Desktop Manager supports the following languages in Help:

English (USA)	German	Portuguese (Brazil)
Arabic	Greek	Portuguese (Euro/Iberian)
Chinese (Simplified)	Hebrew	Russian
Chinese (Traditional)	Hungarian	Slovak
Czech	Italian	Slovenian
Danish	Japanese	Spanish
Dutch	Korean	Swedish
Finnish	Norwegian	Thai
French	Polish	Turkish

# INSTALLATION AND UNINSTALLATION

This chapter contains the following major sections:

- “Before You Begin” on page 17
- “About nView Desktop Manager Installation” on page 17
- “Uninstalling the NVIDIA Display Driver Software” on page 19

## Before You Begin

---

In order to access the nView Desktop Manager application, the latest version of the NVIDIA Display Drivers software for your Windows operating system must be installed on your computer.

♪ *If you do not have System Administrator access privileges, it is assumed that the appropriate person with System Administrator access in your organization will set up and install nView on your computer.*

♪ *This chapter discusses the installation process but does not provide step-by-step instructions on how to perform an actual installation.*

## About nView Desktop Manager Installation

---

The nView Desktop Manager feature is part of your NVIDIA Display Driver Installation files and, therefore, is automatically installed when the NVIDIA Display Driver software is installed.

NVIDIA Driver Installation provides both an .INF file-based installation method and an InstallShield Wizard-based installation method.

## File Locations and Registry Keys

---

- The installation process copies all nView files necessary for operation into the appropriate directories along with setting up the appropriate Registry keys to indicate that this is a first-time installation.
- The nView system files are copied to your Windows\System directory.
- Profile files are saved in the Windows\Nview directory.
- As part of the install process, an uninstall is registered in your system.
- Under Windows Me and Windows XP, the NVIDIA driver is installed in “DualView mode” display. However, note that the second display is not activated by default. You need to enable it. For details on enabling DualView mode, see [“Using Multi-Display Modes: Windows Dualview And nView Span/Clone”](#) on page 20.
- Under Windows 2000, the NVIDIA driver is installed in Span mode.

## Preserving Desktop Manager Settings Before Upgrading Your Software

---

You can preserve your Desktop Manager settings by using profiles when you upgrade your software.

Follow the steps below and/or refer to [“Working With Profiles”](#) on page 57 for details.


- 1 Before uninstalling or installing software, save your current nView Desktop Manager settings to a new profile.  
For example, name this profile “My Settings”.
- 2 Open the Windows\nView directory.  
You should see your new profile .tvp file in this directory; for example, My Settings.tvp.
- 3 You can copy this file to a disk in your A: drive *or* to a different directory on your hard drive.
- 4 Uninstall the currently installed NVIDIA Display Driver software on your system. See [“Uninstalling the NVIDIA Display Driver Software”](#) on page 19.
- 5 Install the new version of the NVIDIA Display Driver software.
- 6 Copy your profile .tvp file back into the Windows\nView directory.

## 7 Start nView Desktop Manager and load your profile.

When you load this profile, all your nView Desktop Manager settings, including Application Position Memory (APM) and/or Individual Application Settings (IAS) you may have set up for an application, will be restored.


# Uninstalling the NVIDIA Display Driver Software

---

 *It is highly recommended that you follow the steps in this section to completely uninstall the NVIDIA Display Driver software before updating to a new version of the software.*

To uninstall the nView software, follow these steps:

- 1 From the Windows desktop, click **Start > Settings > Control Panel > Add/Remove Programs**.
- 2 Click the “NVIDIA Display Drivers” choice from the list that appears.
- 3 Click **Change/Remove**.
- 4 Click **Yes** to continue.
- 5 A prompt appears asking whether you want to delete all of the saved nView profiles.

 *If you click **Yes**, all of the nView software and all of your saved profiles will be deleted. If you click **No**, the nView software is removed, but the profile files are saved in the `Windows\nView` directory on your hard disk.*

- 6 Your system now restarts.

## CHAPTER

## 3

# USING MULTI-DISPLAY MODES: WINDOWS DUALVIEW AND NVIEW SPAN/CLONE

This chapter discusses running nView Desktop Manager with multiple displays under nView Span and Windows Dualview modes. If you are running Desktop Manager with a single display, you can skip to the next chapter.

The following topics are discussed:

- “nView Driver Support: Dualview vs. Span/Clone Modes” on page 20
- “nView Span Modes: Windows 2000/XP” on page 26
- “Windows Dualview Mode” on page 21

## nView Driver Support: Dualview vs. Span/Clone Modes


---

When using NVIDIA products with nView Desktop Manager, there are two ways to run multi-display configuration under most operating systems – Windows Dualview mode and nView Span/Clone modes.

- **Windows Dualview Mode**

Dualview has no special “nView” user interface since Dualview support conforms to the standard Microsoft user interface.

When you start **Windows 9x or Windows XP** in multi-display configuration, Windows starts in “Dualview” mode.

 *You cannot access nView Span/Clone modes (in Windows 2000/XP) if you have Dualview mode enabled. Conversely, you cannot access Dualview mode if you have nView Span/Clone mode enabled.*


- **nView Span/Clone Mode**
  - Under **Windows 2000/XP**, you can access Span/Clone modes from the Windows Display **Settings > Advanced > nView** tab.
  - Under **Windows 9x**, only Clone mode is available.

## Windows Dualview Mode

---

### Benefits of Using Dualview Mode

---

 *Dualview mode is sometimes called “native mode” as it is the native mode supported by Windows multi-display configuration; i.e. it is the “Microsoft” defined multi-display mode supported by Microsoft operating systems.*

Under Windows Dualview mode, the following takes place:

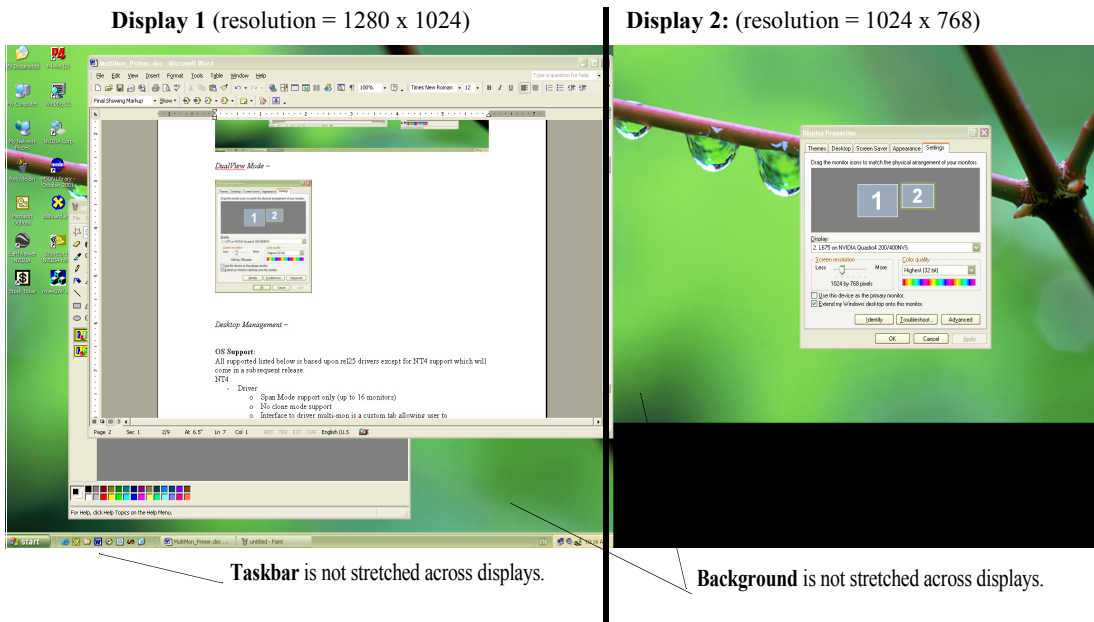
- Windows places the taskbar on only a single display.
- Windows replicates (rather than stretches) the background on each display.
- When you maximize an application, it maximizes only to the single display, and so on.

Figure 3.1 shows an example of a Dualview system where the left display is running at 1280x1024 and the right display is running at 1024x768. Notice that the background is not stretched across the displays and the taskbar appears on a single display instead of being stretched across displays.

### Accessing Windows Dualview Mode

---

You can set Dualview modes directly from the Windows Display Properties Settings page. In addition, Dualview operation is a required mode of operation if you run with more than two displays under Windows 2000/XP.

**Figure 3.1** Multiple Display Devices in Windows Dualview Mode

## Windows 2000

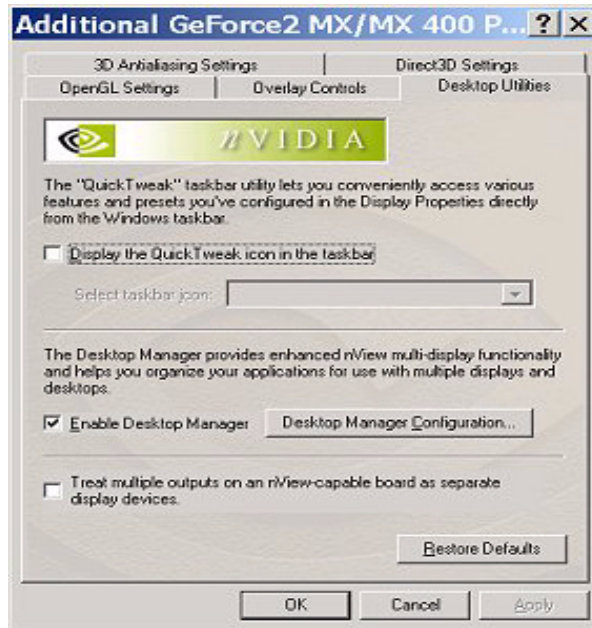
**J** *When you start Windows 2000 with an NVIDIA GPU-based dual-display graphics card (or multiple NVIDIA GPU-based graphics cards), you are not yet in “Dualview” mode. You can confirm this when you view the Windows Display Properties Settings page and see only one icon in the display.*

The NVIDIA Desktop Utilities properties page has an option that lets you enable “Dualview” under Windows 2000. Follow the steps below to enable Dualview.

- 1** Make sure you have a dual-display graphics card (NVIDIA GPU-based) or multiple graphics cards properly installed in your computer and securely connected to your display device.
- 2** Make sure your dual display devices are securely connected to your CPU and turned on!
- 3** Confirm that the NVIDIA Display Driver software (including the nView software module) has been installed on your system.
- 4** Start up Windows 2000.
- 5** From your desktop, right click to view the properties menu.

- 6 Then click **Properties > Settings (tab) > Advanced**.
- 7 Click the NVIDIA GPU tab > **Additional Properties > Desktop Utilities (tab)** to display the NVIDIA Desktop Utilities properties page (Figure 3.2).
- 8 At the bottom of the page, click the check box labeled “**Treat multiple outputs on an nView-capable board as separate display devices**” to insert a check mark in the box.

**Figure 3.2** NVIDIA Desktop Utilities Properties Page: Enabling Dualview in Windows 2000




- 9 Click **Apply**.
- 10 Restart your computer, when prompted.
- 11 After you log back on to your computer, from your desktop, right click to view the properties menu, then click **Properties** and the **Settings** tab. You'll notice that two displays icons appear on the Settings page now.
- 12 For the steps that follow, refer to the screens in “**Display Properties Settings: Windows Dualview Modes**” on page 25.
- 13 Now right click the display icon that you need to “**Attach**” to display a pop-up properties menu.
- 14 Click **Attached** and click **Apply**.



You will notice that the “**Extend my Windows desktop onto this monitor...**” option becomes checked and your secondary display device is enabled.


You are now in multi-display Dualview mode under Windows 2000.

 Remember that Windows Dualview and nView Clone modes are mutually exclusive. So now that you are in Dualview mode, you cannot access nView Span and Clone modes until you disable Dualview (i.e., uncheck the “**Treat multiple outputs on. . .**” check box in the Desktop Utilities properties page) and restart your computer.

## Windows XP and Windows 9x

When you start Windows 9x or Windows XP in multi-display configuration, Windows starts in “Dualview” mode. You may only need to do an “attach” procedure to enable the secondary display device. Follow these steps:

- 1 Make sure you have a dual-display graphics card (NVIDIA GPU-based) installed in your computer.
- 2 Make sure all your display devices are securely connected to your computer and turned on!
- 3 Confirm that the NVIDIA Display Driver software (including the nView modules) has been installed on your system.
- 4 Start Windows.
- 5 From your desktop, right click to view the properties menu, then click **Properties** and the **Settings** (tab). You'll notice that two display icons appear on the Settings page.
- 6 For the steps that follow, refer to the screens in “[Display Properties Settings: Windows Dualview Modes](#)” on page 25.
- 7 Now right click the display icon that you need to attach. A pop-up properties menu appears

 You may not have to do the next step (# 8) if the secondary display device is already attached.

- 8 Click **Attached** and **Apply**.

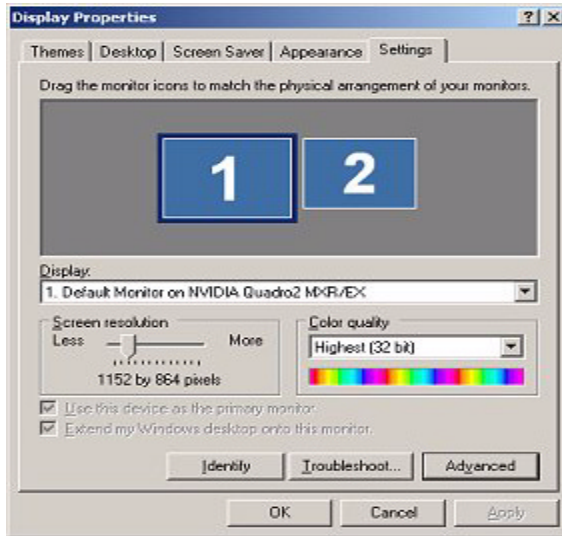
You will notice that the “**Extend my Windows desktop onto this monitor...**” option becomes checked and your secondary display device is enabled.

You are now in multi-display Dualview mode.

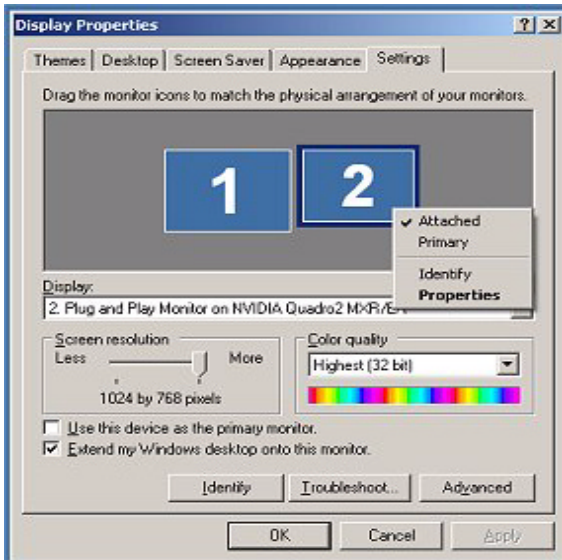
## Display Properties Settings: Windows Dualview Modes

The Display Properties Settings shown in [Figure 3.3](#) and [Figure 3.4](#) apply to all the Windows operating systems (Windows 2000/XP and Windows 9x) in Dualview mode. Confirm that your display settings match the figures.

**Figure 3.3** Windows Display Settings in Dualview Mode (1)



**Figure 3.4** Windows Display Settings in Dualview Mode (2)



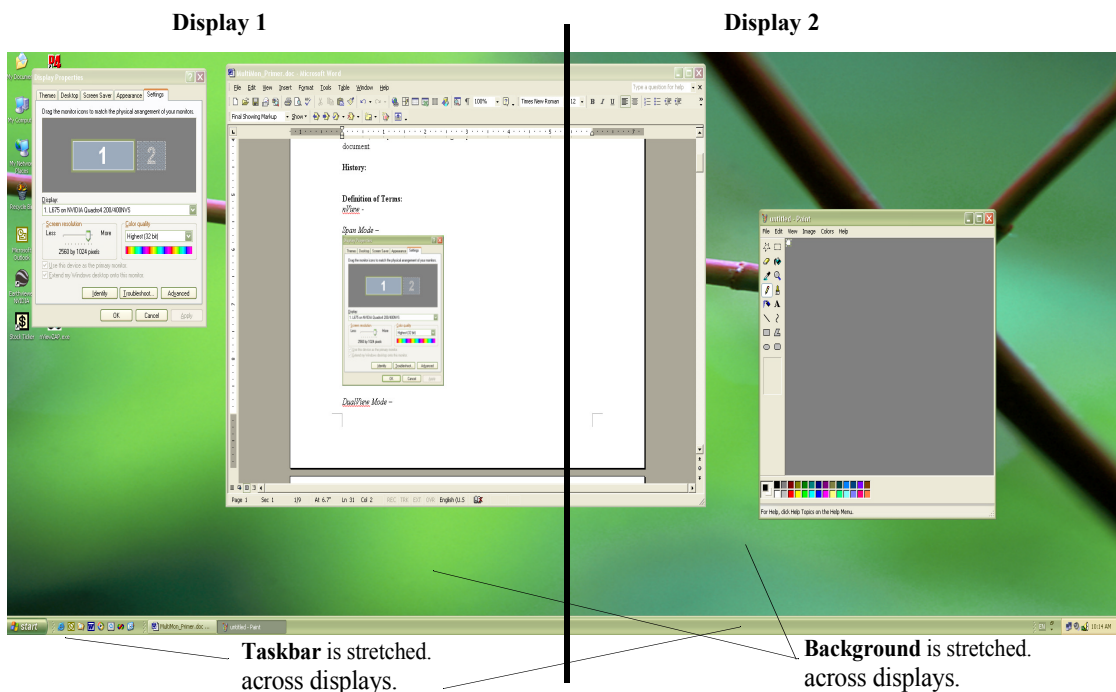
# nView Span Modes: Windows 2000/XP

## About Span Modes

In Span mode, your windows desktop is “stretched” or “spans” all of your displays. In Span mode, as far as windows is concerned, you only have a single “logical” display device connected to your computer – the real “physical” displays are combined together to give you this “logical” display.

Figure 3.5 shows an example of running Span mode under Windows XP with both displays set to 1280x1024 resolution. In this configuration, Windows recognizes *only* a single display running at 2x1280x1024 or 2560x1024.

**Figure 3.5** Multiple Displays in nView Horizontal Span Mode



The key to remember when running Span mode is that Windows does not detect that you have two displays connected – as far as it is concerned, you have an oversized display. This is the reason that you cannot use different bit depths or resolutions per display. Under Span mode, Windows “stretches” the background wallpaper out to cover your large “logical” display and it stretches the taskbar out to fill your large “logical” display, as shown in Figure 3.5.

If you maximize an application, the application will be maximized to fill the large “logical” display screen – i.e., both displays.

## Display Properties Settings: nView Span/Clone Modes

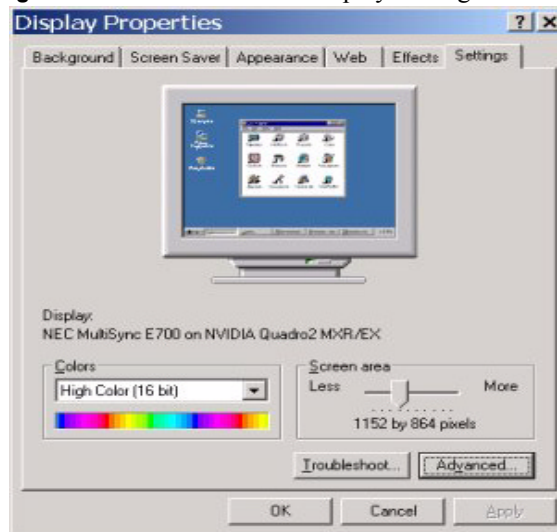
### Windows 2000

*If you are in Dualview mode, you need to disable Dualview mode before you can enable nView Span or Clone modes. Switching between Span and Dualview modes requires restarting your computer.*


- 1 To disable Dualview, uncheck the Dual View option “**Treat multiple outputs. .**” on the NVIDIA Desktop Utilities properties page (Figure 3.2).
- 2 Click **Apply** and restart your computer.
- 3 Once you log back in to your computer, you can to access the nView control panel to enable nView Clone or Span modes.

*When you are in Windows 2000 Span or Clone modes, your Windows Display Properties Settings page shows only one display icon (Figure 3.2), unlike Windows XP, which shows two display icons.*

**Figure 3.6** Windows 2000: Display Settings for nView Span (& Clone) Modes



## Windows XP

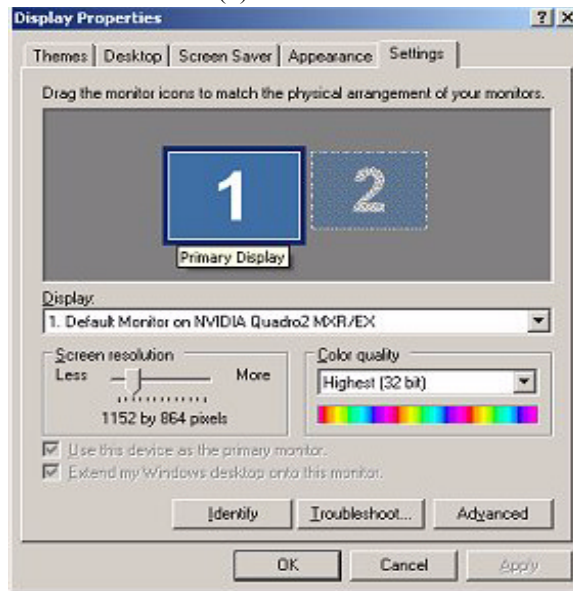
 *Under Windows XP, you do not need to restart your computer to switch between Span/Clone and Dualview modes.*

When you are in Windows XP Span or Clone modes, your Windows Display Properties Settings page shows “two” display icons, unlike Windows 2000, which shows only one icon.

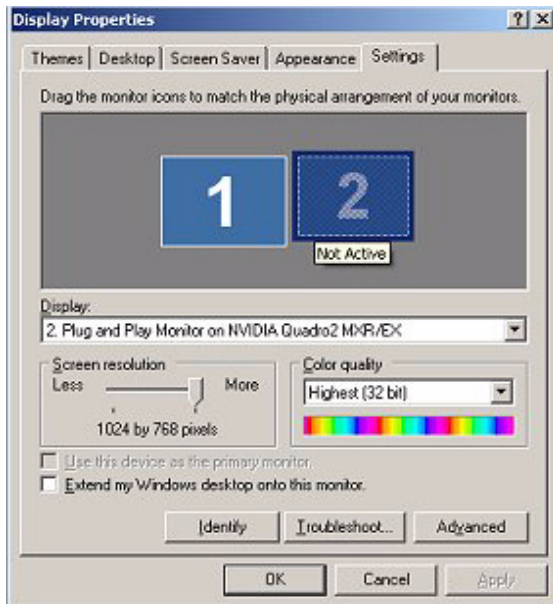
To enable Span or Clone modes in Windows XP, you must ensure that your Windows Display Properties Settings page reflects the configurations shown in [Figure 3.7](#) through [Figure 3.9](#).

[Figure 3.7](#) shows that only the first display device of the two displays (as represented by the number “1”) is active and [Figure 3.8](#) through [Figure 3.9](#) show that the second display device (represented by the number 2) is not attached.

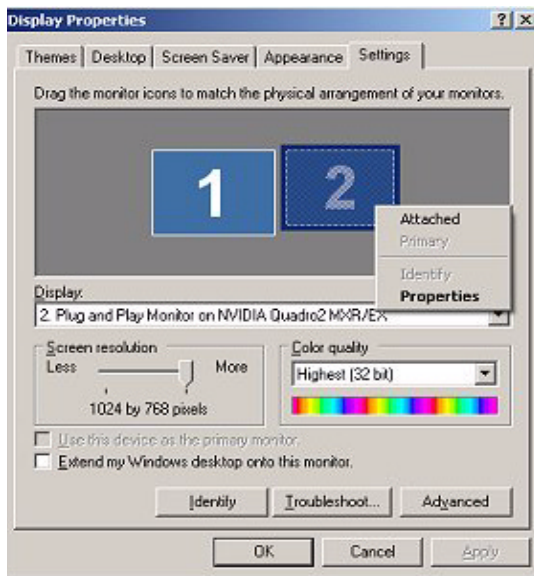
**Figure 3.7** Windows XP: Display Settings in Dualview Mode with Second Display Disabled (1)



**Figure 3.8** Windows XP: Display Settings in Dualview Mode With Second Display Disabled (2)



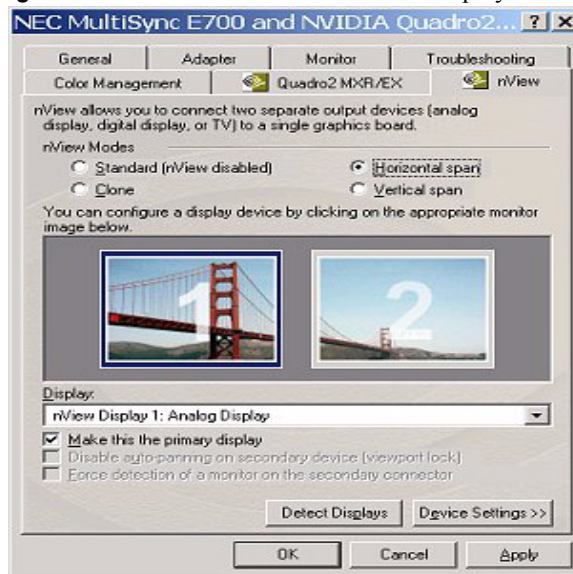
**Figure 3.9** Windows XP: Display Settings in Dualview Mode With Second Display Disabled (3)



## Accessing Span Modes

Under Windows 2000/XP, you can access nView Span (Horizontal and Vertical) and Clone modes from the Windows Display **Settings** tab > **Advanced** > **nView** tab, as shown in Figure 3.10.

**Figure 3.10** Windows 2000/XP: nView Display Modes



# ACCESSING DESKTOP MANAGER AND ITS SETTINGS

This chapter discusses the following topics:

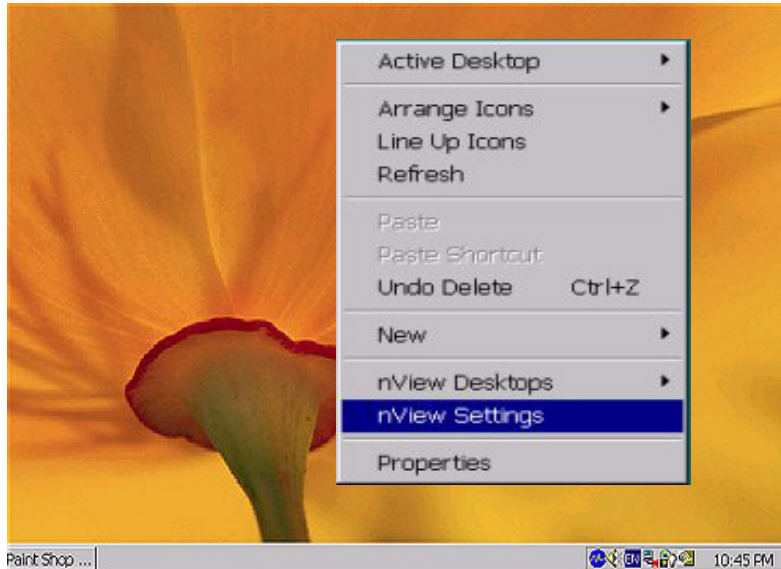
- “Enabling and Disabling Desktop Manager” on page 31
- “Accessing Desktop Manager Settings” on page 40
- “Troubleshooting” on page 42

## Enabling and Disabling Desktop Manager

---

- 1 Once you have installed the NVIDIA Driver software with the nView Desktop Manager features, you can enable (load) and disable (unload) Desktop Manager using a variety of methods, as discussed in this section:
  - “Enabling Desktop Manager from the Setup Wizard” on page 32:
  - “Enabling Desktop Manager from the Profiles Page” on page 35
  - “Enabling Desktop Manager from the NVIDIA Desktop Utilities Properties Page” on page 36
  - “Enabling Desktop Manager from the NVIDIA QuickTweak Icon” on page 37
- 2 *After you enable Desktop Manager using any of the above \*methods*, from your Windows desktop, you can subsequently right click to display the properties menu, which will now contain the “**nView Settings**” option, as shown in Figure 4.1.



**Figure 4.1** Properties Menu with nView Settings

Several Desktop Manager functions such as *Application Position Memory (APM)* and performing operations on multiple windows within an application require Desktop Manager to be loaded before you start the application. For this reason, it is highly recommended that you enable Desktop Manager to load automatically at startup through the Setup Wizard, as explained in the next section “[Enabling Desktop Manager from the Setup Wizard](#)” on page 32.

## Enabling Desktop Manager from the Setup Wizard

---

The Desktop Manager Setup Wizard is a series of dialog boxes that guides you in setting the most common global settings for window, desktop, and application management. For details on using the Setup Wizard, see “[Using the Desktop Manager Setup Wizard](#)” on page 44.

### Automatic Startup of Wizard

If you are setup with a multi-display configuration, the *first time* you start Windows on your computer after the installation of the NVIDIA Windows Display Driver, the Desktop Manager Setup Wizard starts automatically.

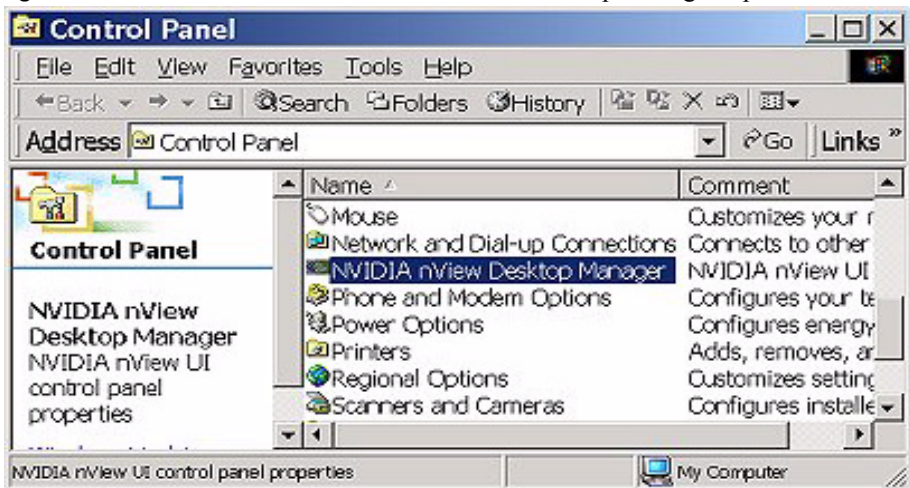
**J** Under **Windows 9x**, you only need to be running with an **NVIDIA dual-display GPU-based card** for the Wizard to start automatically; multiple-monitors need not be connected.

## Manually Starting the Wizard

If you are setup with only a single monitor, the *first time* you start Windows on your computer after the installation of the **NVIDIA Windows Display Driver** software, the **Desktop Manager Setup Wizard** *does not start automatically*. You can start the Wizard using the following steps:

- 1 From your Windows desktop, click **Start > Settings > Control Panel**.
- 2 From the Names column, click **NVIDIA nView Desktop Manager** (Figure 4.2) to display the nView Desktop Manager control panel (Figure 4.3 or Figure 4.4).

**Figure 4.2** Windows Control Panel with nView Desktop Manager Option



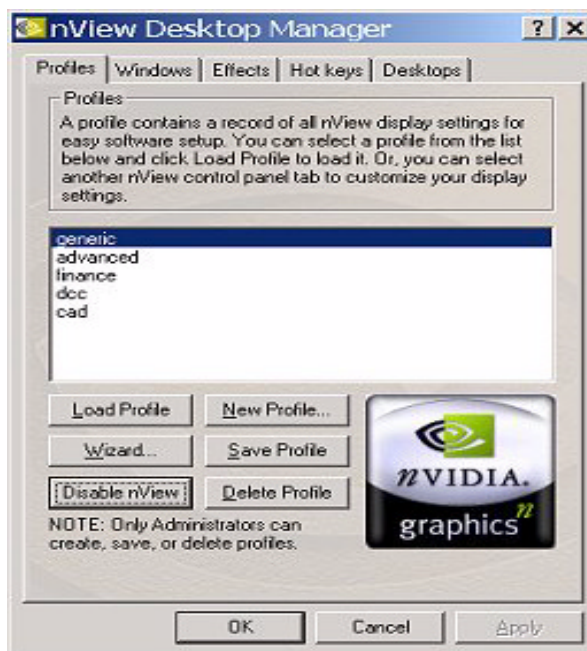
- 3 Click **Enable nView** if Desktop Manager hasn't yet been loaded. Otherwise, go to the next step.
- 4 Click the **Wizard** option (Figure 4.4) to start the Wizard.
- 5 While going through the Wizard, if you click the check box "**Automatically Enable nView when starting Windows**" then, after you complete running the Wizard, the following occurs:
  - Desktop Manager is loaded
  - Each time you start Windows on your computer, Desktop Manager will be automatically enabled, until you disable or uninstall it.

For details on using the Wizard, see “Using the Desktop Manager Setup Wizard” on page 44.

**Figure 4.3** Profiles Page *Before* Desktop Manager is Enabled



**Figure 4.4** Profile Page *After* Desktop Manager is Enabled



## Enabling Desktop Manager from the Profiles Page

---


To enable (load) or disable (unload) Desktop Manager using options in the Profiles page, follow these steps:

- 1 Access the Desktop Manager control panel using any one of the methods described in “[Accessing Desktop Manager Settings](#)” on page 40.

[Figure 4.3](#) shows the Desktop Manager Profiles control panel *before* Desktop Manager is enabled. [Figure 4.4](#) shows the Desktop Manager Profiles control panel *after* Desktop Manager is enabled.

The **Enable/Disable nView** option is a toggle to enable/disable Desktop Manager.

- 2 To enable Desktop Manager, click **Enable nView** ([Figure 4.3](#)).
- 3 From your Windows desktop, right click to display the properties menu, which will now contain the “**nView Settings**” option (shown earlier in [Figure 4.1](#)).
- 4 Once you have loaded Desktop Manager, to unload it, click **Disable nView** ([Figure 4.4](#)).


 *Using the above method, Desktop Manager loads only until you log off. The next time you log on, Desktop Manager will not be automatically enabled. To automatically load Desktop Manager when you log in to Windows, use the Desktop Manager enabling methods described in the following sections:*

- “[Enabling Desktop Manager from the Setup Wizard](#)” on page 32
- “[Enabling Desktop Manager from the NVIDIA Desktop Utilities Properties Page](#)” on page 36
- “[Enabling Desktop Manager from the NVIDIA QuickTweak Icon](#)” on page 37

## Enabling Desktop Manager from the NVIDIA Desktop Utilities Properties Page

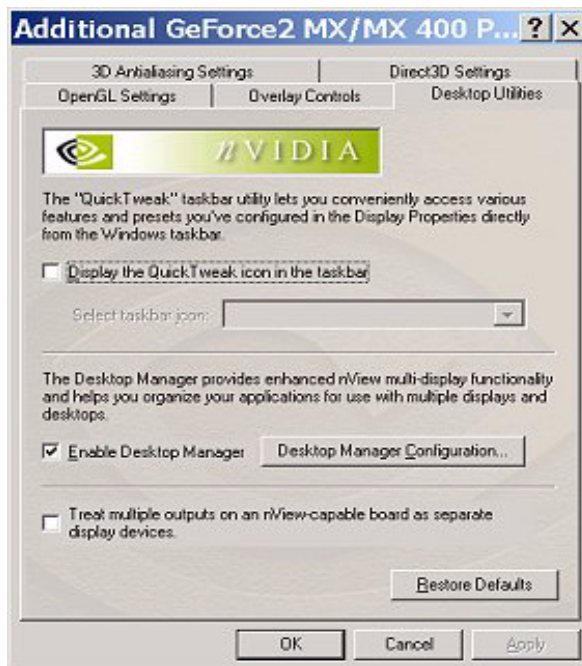
To enable (load) or disable (unload) Desktop Manager through the NVIDIA Desktop Utilities properties page, follow these steps:

- 1 Right click from your Windows desktop.
- 2 Then click **Properties** > **Settings** tab > **Advanced** option > **NVIDIA GPU** tab > **Additional Properties** option > **Desktop Utilities** tab.
- 3 To enable the Desktop Manager, click the **Enable Desktop Manager** check box and click **Apply** (Figure 4.5).

 Now, when you right click from your Windows desktop, you will see that the properties menu contains the “nView Settings” option, as shown in [Figure 4.1](#) earlier.

- 4 To disable the Desktop Manager, simply click the **Enable Desktop Manager** check box to remove the check mark and **Apply**.
- 5 Right click from your Windows desktop and you will see that the “nView Settings” option no longer appears, indicating that the Desktop Manager has now been disabled.

**Figure 4.5** NVIDIA Desktop Utilities Properties Page



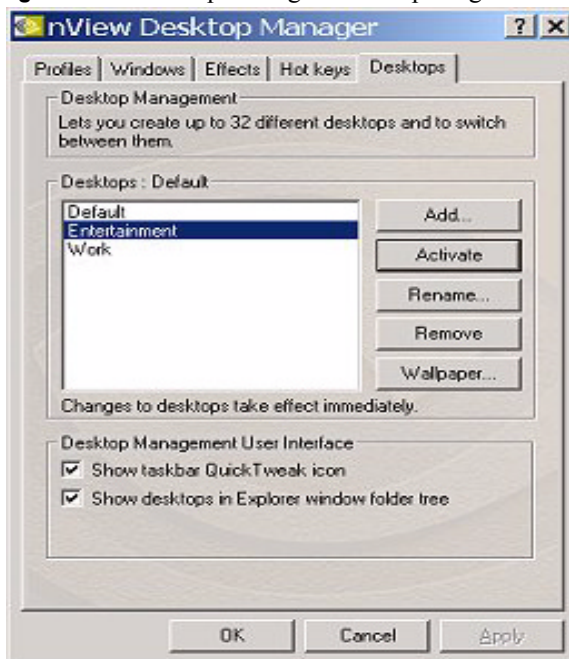
## Enabling Desktop Manager from the NVIDIA QuickTweak Icon

### Enabling the QuickTweak Icon from the Desktop Manager “Desktops” Page

This is the most convenient method of enabling the NVIDIA QuickTweak icon:

- 1 Access the Desktop Manager “Desktops” page using any one of these procedures:
  - If Desktop Manager is already enabled, right click from your desktop, click **nView Settings** and click the **Desktops** tab.
  - If Desktop Manager is not already enabled, from your Windows desktop, click **Start > Settings > Control Panel > NVIDIA nView Desktop Manager** to display the “Profiles” page of the Desktop Manager control panel; click **Enable nView**, then click the **Desktops** tab.
- 2 In the “Desktop Management User Interface” group box (Figure 4.6), click the **Show taskbar QuickTweak icon** check box to insert a check mark in the box.
- 3 Click **Apply** to add the QuickTweak icon to your Windows taskbar (Figure 4.8).

**Figure 4.6** Desktop Manager: Desktops Page



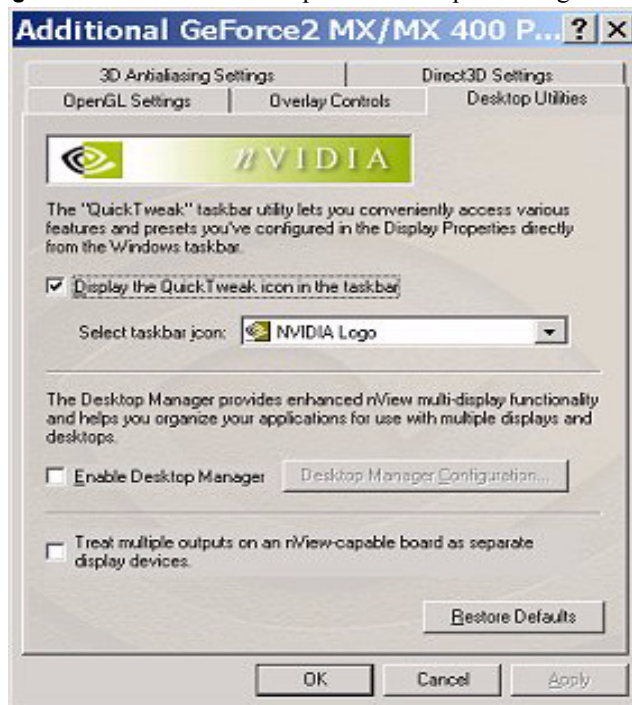
- 4 Go to the “Using the NVIDIA QuickTweak Icon to Enable/Disable Desktop Manager” on page 39.

## Enabling the QuickTweak Icon From the Desktop Utilities Page

This is an alternate Settings method of enabling the NVIDIA QuickTweak icon:

- 1 From your Windows desktop, right click to display the properties menu.
- 2 Then click **Properties** > **Settings** tab > **Advanced** > **NVIDIA GPU** tab > **Additional Properties** > **Desktop Utilities** tab.
- 3 Next, click **Display the QuickTweak icon in the Windows taskbar** to enable this option
- 4 Click **Apply** (Figure 4.7). This adds the QuickTweak icon (Figure 4.8) to your Windows taskbar.
- 5 Go to the “Using the NVIDIA QuickTweak Icon to Enable/Disable Desktop Manager” on page 39.

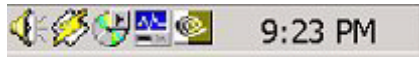
Figure 4.7 NVIDIA Desktop Utilities Properties Page



## Using the NVIDIA QuickTweak Icon to Enable/Disable Desktop Manager

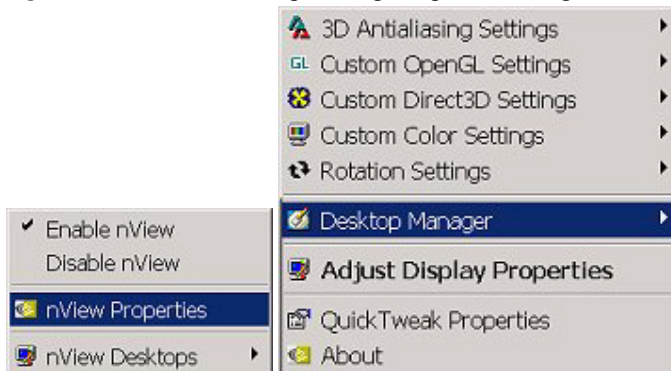
- 1 To enable Desktop Manager, right click the QuickTweak icon on the Windows taskbar (Figure 4.8) and click **Desktop Manager > Enable nView**.

**Figure 4.8** NVIDIA QuickTweak Icon

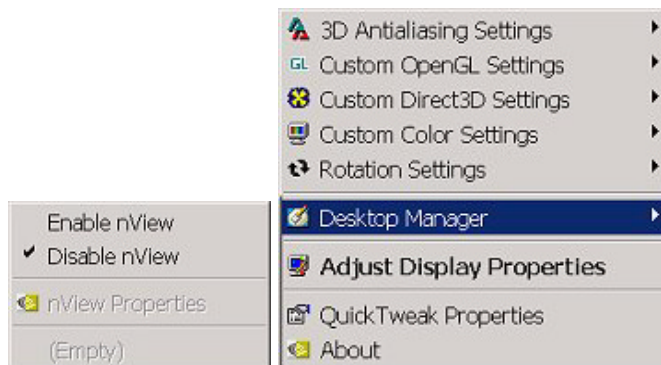


- 2 Again, right click the QuickTweak icon on the Windows taskbar and click **Desktop Manager** to confirm that the “**Enable nView**” option is now checked (Figure 4.9).
- 3 To disable Desktop Manager, right click the QuickTweak icon on the Windows taskbar and click **Desktop Manager > Disable nView**.
- 4 Again, right click the QuickTweak icon on the Windows taskbar and click **Desktop Manager** to confirm that the “**Disable nView**” option is now checked (Figure 4.10).

**Figure 4.9** nView Desktop Manager Options through QuickTweak Icon



**Figure 4.10** nView Desktop Manager Options through QuickTweak Icon





# Accessing Desktop Manager Settings

---

There are several ways to access the nView Desktop Manager control panel settings, as discussed in these sections:

- “Accessing Desktop Manager Settings from Windows Control Panel” on page 40:
- “Accessing Desktop Manager Settings from the Windows Desktop Menu” on page 40
- “Accessing Desktop Manager Settings from the NVIDIA Desktop Utilities Page” on page 41
- “Accessing Desktop Manager Settings from the NVIDIA QuickTweak Icon” on page 42

## Accessing Desktop Manager Settings from Windows Control Panel

---

To access Desktop Manager settings from Windows Control Panel, follow these steps:

- 1 From your Windows desktop, click **Start > Settings > Control Panel**.
- 2 From the Names column, click **NVIDIA nView Desktop Manager** (Figure 4.2) to display the Desktop Manager control panel (Figure 4.4).
- 3 If Desktop Manager is not enabled, the “Enable nView” option will be available. In this case, click **Enable nView** to enable the Desktop Manager.
- 4 To access the Windows, Effects, Hot Keys, or Desktops properties, simply click the named tab.

## Accessing Desktop Manager Settings from the Windows Desktop Menu

---

To access Desktop Manager control panel settings from the Windows properties menu, follow these steps:

- 1 Confirm that Desktop Manager is enabled. If it is not, enable the Desktop Manager using one of the procedures in “Enabling and Disabling Desktop Manager” on page 31.
- 2 From your Windows desktop, right click to display the properties menu (Figure 4.1), then click **nView Settings** to display the Desktop Manager control panel (Figure 4.4).

## Accessing Desktop Manager Settings from the NVIDIA Desktop Utilities Page

To access the Desktop Manager control panel settings from the NVIDIA Desktop Utilities control panel, follow these steps:

- 1 Click **Properties** > **Settings** tab > **Advanced** option > **NVIDIA GPU** tab > **Additional Properties** option > **Desktop Utilities** tab to display the Desktop Utilities properties page.
- 2 Click the **Enable Desktop Manager** check box if it isn't already checked and click **Apply** (Figure 4.11).
- 3 Click the **Desktop Manager Configuration** option to display the Desktop Manager control panel settings (Figure 4.4).

**Figure 4.11** NVIDIA Desktop Utilities Properties Page

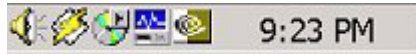


## Accessing Desktop Manager Settings from the NVIDIA QuickTweak Icon

1 Make sure you have enabled the Quick Tweak icon using one of the procedures in “Enabling Desktop Manager from the NVIDIA QuickTweak Icon” on page 37.

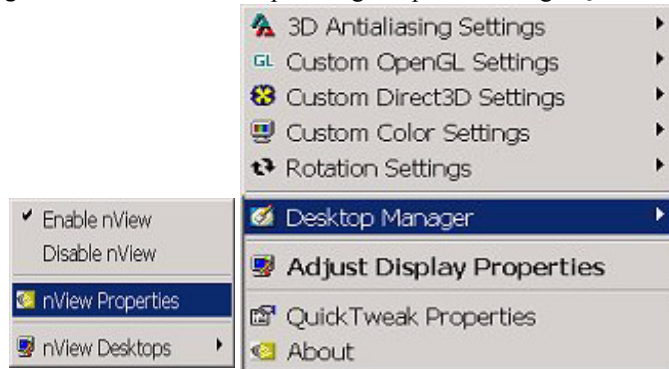
2 Right click the QuickTweak icon from the Windows taskbar (Figure 4.12).

**Figure 4.12** NVIDIA QuickTweak Icon



3 Click **Desktop Manager > nView Properties** (as shown in Figure 4.13) to display the Desktop Manager control panel.

**Figure 4.13** nView Desktop Manager Options through QuickTweak Icon



## Troubleshooting

If you have trouble accessing the Desktop Manager control panel, verify that a current version of the NVIDIA Display Driver software is installed on your system. You can follow these steps to verify this:

1 From your Windows desktop, right click to display the properties menu and then select **Properties > Settings** tab to access the Display Properties Settings page.

The “Display” field shows the name of your NVIDIA-GPU based graphics card; for example, “*Monitor name on NVIDIA Quadro2 MXR/EX*”.

2 Click **Advanced** and the tab labeled with the name of your NVIDIA GPU; for example, “*Quadro2 MXR/EX*”.

3 Verify that the “Driver Version Information” box lists the most recent versions of the NVIDIA driver files. Scroll down to confirm that all files

have the same version number. If there's any discrepancy, make sure you or your system administrator uninstalls the NVIDIA driver software according to the instructions in [“Uninstalling the NVIDIA Display Driver Software” on page 19](#) and then reinstall the software.


**Note:** Make sure that the file `nvdesk32.dll` does not appear on the Driver Version Information list of files. This file is now obsolete and can result in inconsistencies. If you see this file, uninstall the NVIDIA Display Driver software and then re-install a current version.

## CHAPTER

## 5

# USING THE DESKTOP MANAGER SETUP WIZARD

The nView Desktop Manager Setup Wizard is a series of dialog boxes that guides you in setting the most common global settings for window, desktop, and application management.

 *The Setup Wizard automatically starts when Desktop Manager is started after first-time installation of the NVIDIA Windows Display Driver.*

The following topics are discussed:

- “Starting the Setup Wizard” on page 44
- “About the Setup Wizard” on page 46
- “Using the Setup Wizard” on page 47

## Starting the Setup Wizard

---

### Multi-Display vs. Single-Display Setup

---

- If you are setup with a multi-display configuration (i.e., you have more than one display device attached), the *first time* you start Windows on your computer after the installation of the NVIDIA Windows Display Drivers software, the *Wizard starts automatically*.

On subsequent Windows sessions, you can start the Wizard from the Desktop Manager control panel; i.e., the **Wizard** option on the Profiles tab.

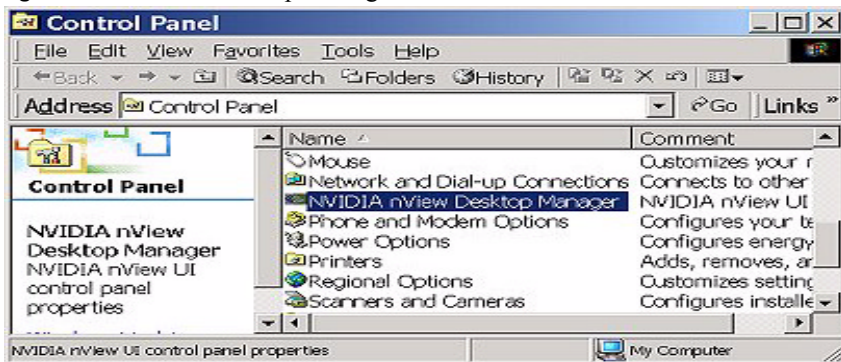
- If you are setup with only a single monitor, the *first time* you start Windows on your computer after the installation of the NVIDIA Windows Display Driver software, the Wizard *does not start automatically*.

You can start the Wizard from the Desktop Manager control panel; i.e., the **Wizard** option on the Profiles tab.

## Steps to Start the Wizard

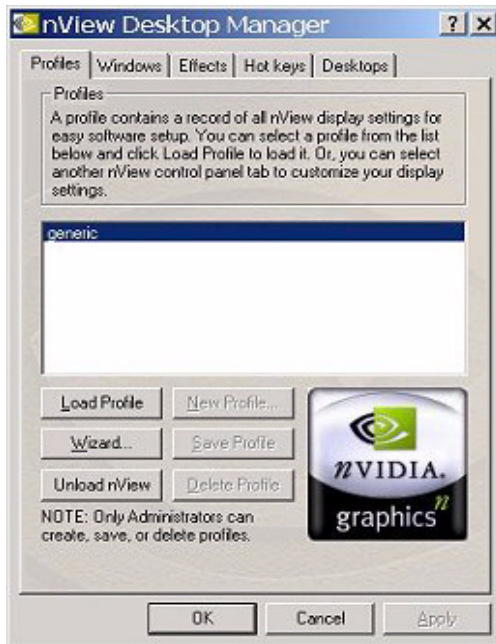
- 1 From your Windows desktop, click **Start > Settings > Control Panel**.
- 2 From the Names column, click **NVIDIA nView Desktop** (Figure 5.1) to display the Desktop Manager control panel (Figure 5.2 or Figure 5.3).

**Figure 5.1** nView Desktop Manager: After nView Load



**Figure 5.2** Profiles Page *Before* Desktop Manager is Enabled



**Figure 5.3** nView Desktop Manager (Profiles) Control Panel *After* nView is Enabled

- 3 Click **Load nView** if nView hasn't yet been loaded. Otherwise, go to the next step.
- 4 Click the **Wizard** option to start the Wizard.

## About the Setup Wizard

---

The Setup Wizard is a series of dialog boxes that guides you in setting the most common global desktop and windows modes. Each Wizard window (step) contains descriptive text for a specific option and, in some cases, an illustration that shows the effect of the option; for example, control panel repositioning or window spanning. You can also chose to skip major option groups.

The options which can be set through the Wizard are:

- Profiles
- Windows Management
  - Dialog Boxes
  - Windows Spanning
  - Position Memory
  - System Menu Extensions

- Desktop Management
  - How many desktops
  - Show up in Explorer
- Transparency effects

For advanced configuration, use the Desktop Manager control panel. To access it, right click from your desktop and click **nView Settings**. *Or*, if Desktop Manager is not loaded, follow these steps:

- 1 From your Windows desktop, click **Start > Settings > Control Panel**.
- 2 From the Names column, click **NVIDIA nView Desktop** (Figure 5.1) to display the Desktop Manager control panel.
- 3 Click **Enable nView**.


## Using the Setup Wizard

---

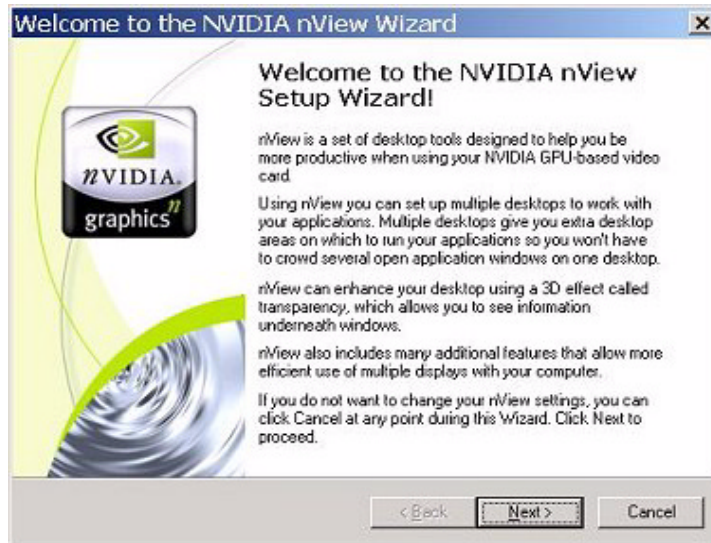
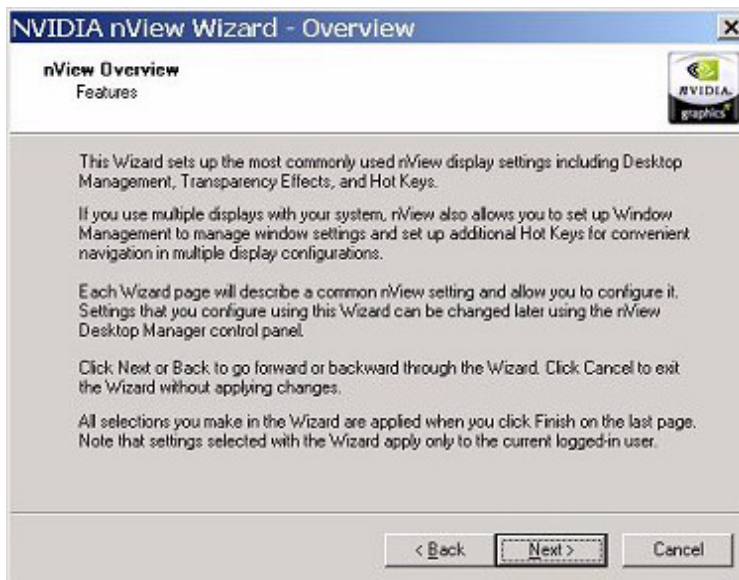
The figures in this section show the step-by-step Wizard windows you will see when running the Desktop Manager Wizard.

Use the following guidelines when using the Wizard:

- Use the **Back** and **Next** options to navigate through the windows.
- Carefully read the content of each page, which serves as a quick overview of key Desktop Manager features and lets you enable/disable certain key features by clicking a check box.
- In most cases the default setting is that the option is not checked, i.e., disabled. Clicking the check box next to the option toggles between enabling and disabling the option.
- If you enable a feature, note that you can change this setting later through the Desktop Manager control panel, which contains the Profiles, Windows, Effects, Hot Keys, and Desktops tabs.
- If you do not want to enable one or more features in a given window, click **Next** to go to the next window.

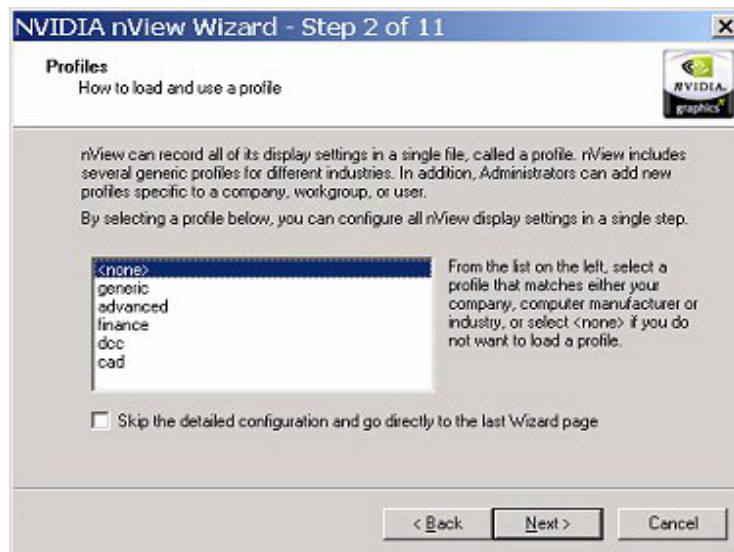
 *There may be some variation in the number and type of Wizard windows that appear, depending on your configuration; i.e., whether you are running Windows Me/9x (limited features), multiple desktops, and so on.*




**Figure 5.4** nView Desktop Manager Wizard: Introduction**Figure 5.5** nView Desktop Manager Wizard: Features Overview

**Figure 5.6** nView Desktop Manager Wizard: Using Desktop Manager

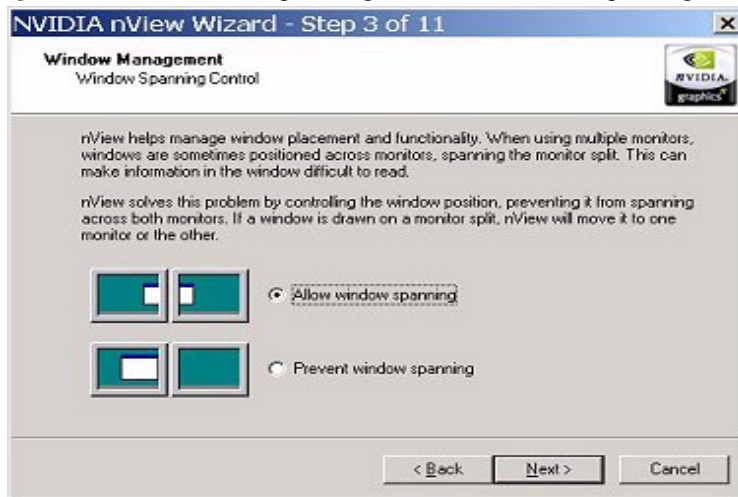
**J** Several Desktop Manager functions such as application position memory (APM) and performing operations on multiple windows within an application require Desktop Manager to be loaded before you start the application. For this reason, it is recommended that in the Wizard page shown above (Figure 5.6), you enable nView Desktop Manager to load automatically at startup by checking the option “**Automatically enable nView when starting Windows**”. Then click **Next** to continue.

**Figure 5.7** nView Desktop Manager Wizard: Loading and Using a Profile

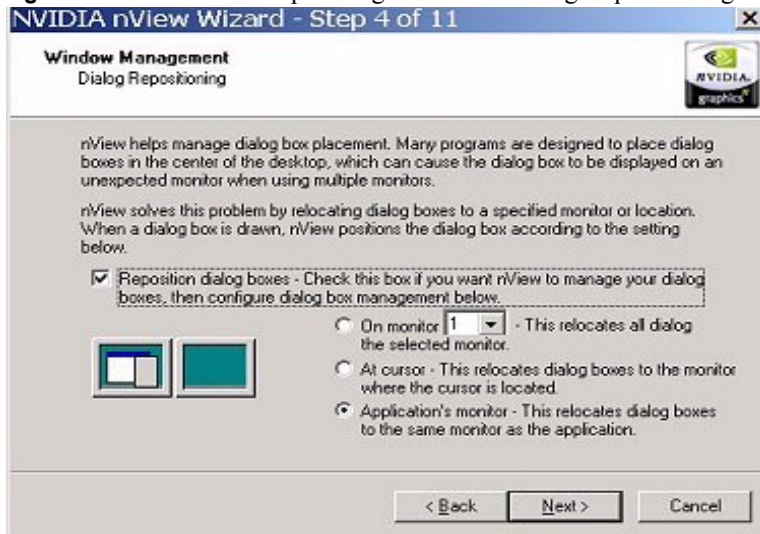
 From the Wizard page shown in Figure 5.7, if you want to skip the detailed configuration windows that would normally appear when you click Next, click the **Skip the detailed configuration** check box to enable the option and then click **Next** to go directly to the last window of the Wizard.

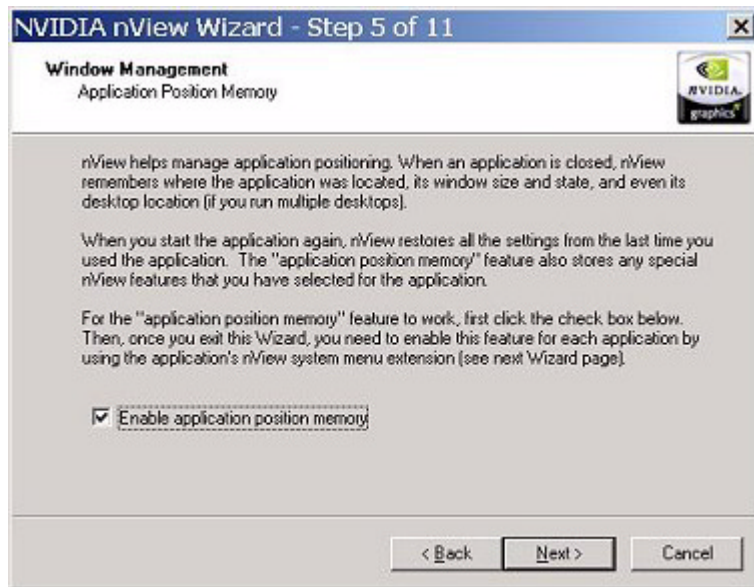
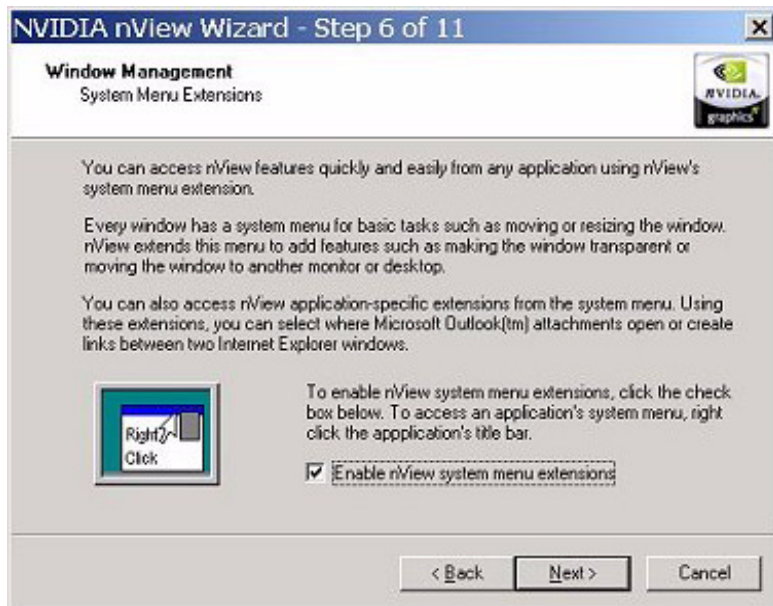
The following Wizard pages (Figure 5.8 and Figure 5.9) appear only if you have a multi-display setup.

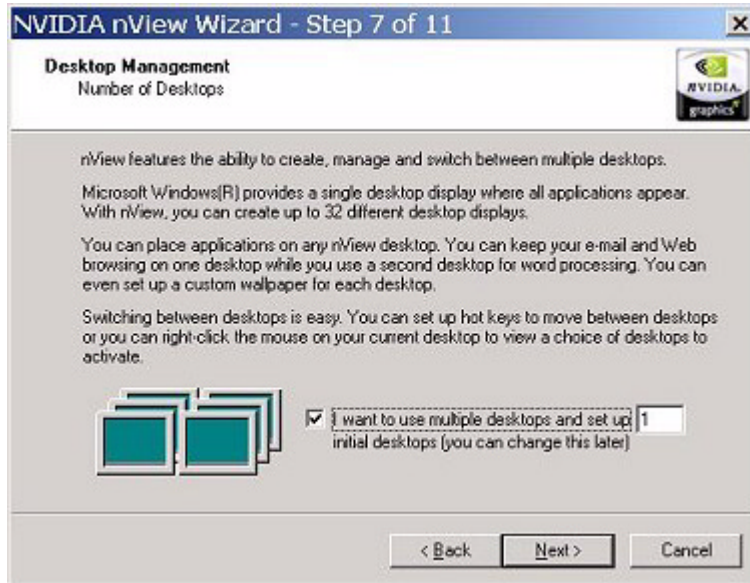
**Figure 5.8** nView Desktop Manager Wizard: Window Spanning Control



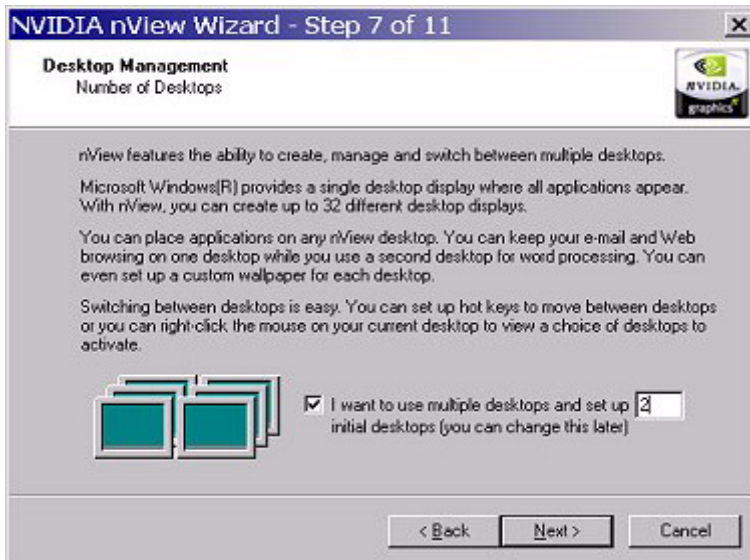
**Figure 5.9** nView Desktop Manager Wizard: Dialog Relpositioning



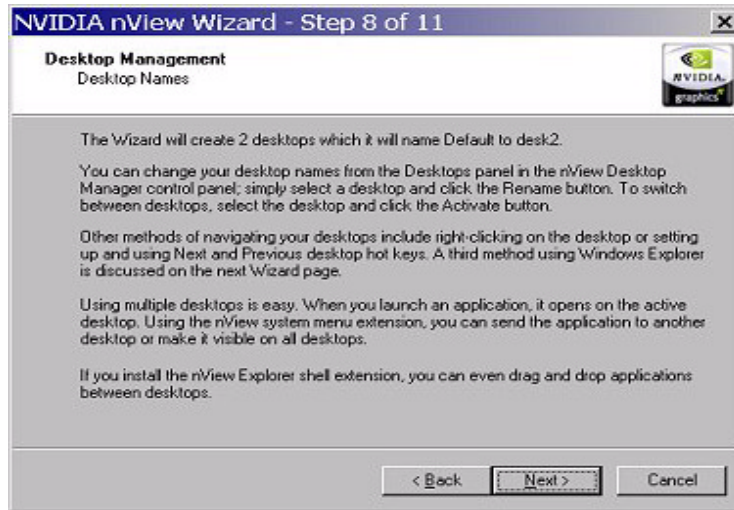
**Figure 5.10** nView Desktop Manager Wizard: Application Position Memory**Figure 5.11** nView Desktop Manager Wizard: System Menu Extension

**Figure 5.12** nView Desktop Manager Wizard: Number of Desktops (1)

Note that you can specify up to 32 desktops. Figure 5.13 shows a setting of “2” desktops.

**Figure 5.13** nView Desktop Manager Wizard: Number of Desktops (2)

*If you specified more than 1 desktop in the previous window, the window in Figure 5.14 appears.*

**Figure 5.14** nView Desktop Manager Wizard: Desktop Names

The next Wizard page (Figure 5.15) shows the “Turn on the Explorer extension” feature enabled. Notice how the “Desktop Explorer” extension is automatically added to your Windows Explorer.

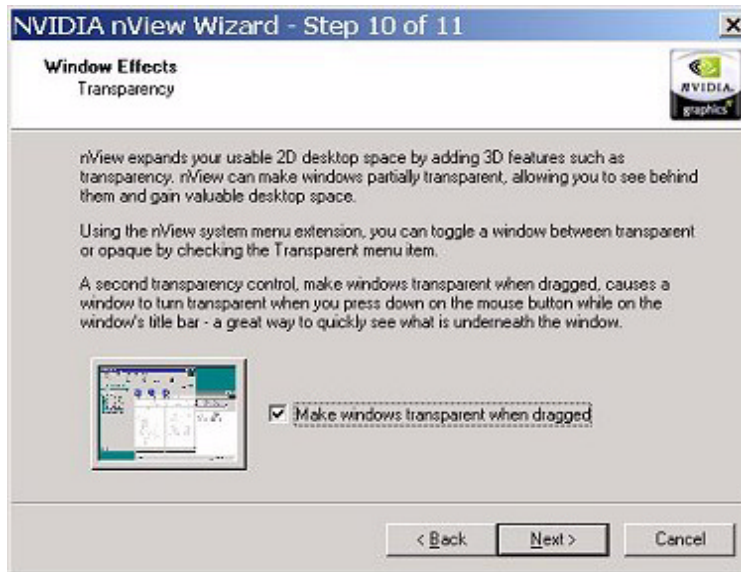
*Only users with System Administrator access privileges can enable or disable this option.*

*Microsoft Internet Explorer 6.0 or later version must be installed for the Desktop Explorer feature to work.*

**Figure 5.15** nView Desktop Manager Wizard: Turning on the Explorer Extension

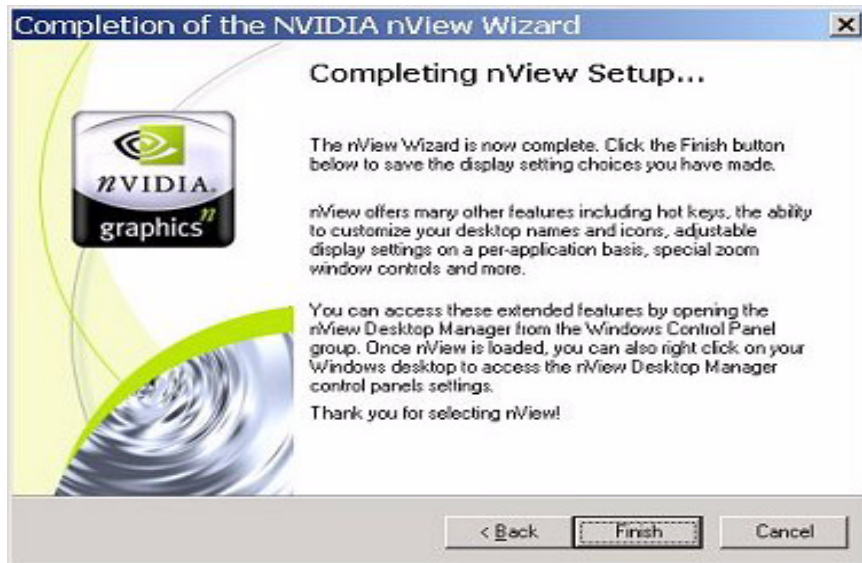
♪ Since “Transparency” is not a supported feature under Windows 9x, the Wizard page in Figure 5.16 will not appear under Windows 9x

**Figure 5.16** nView Desktop Manager Wizard: Window Effects (Transparency)

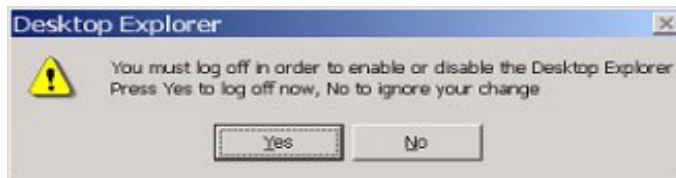


**Figure 5.17** nView Desktop Manager Wizard: Fast Windows Maximize



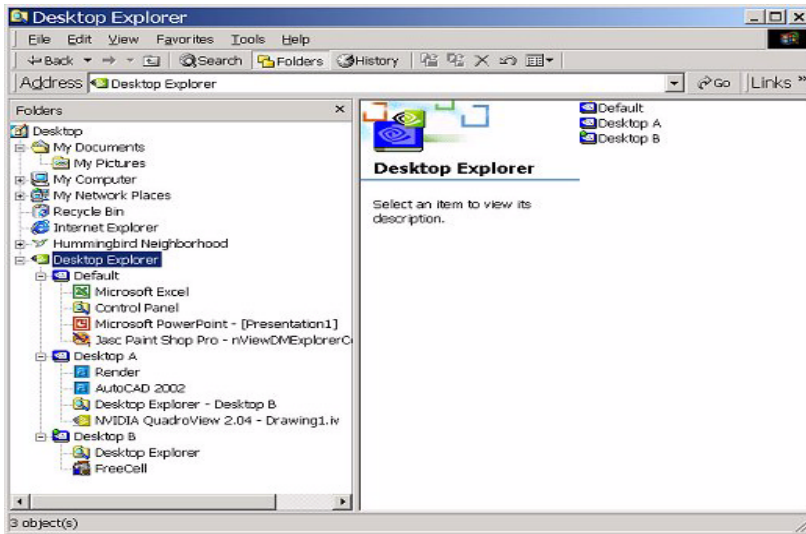
**Figure 5.18** nView Desktop Manager Wizard: Completing Setup

After you click **Finish** to complete Desktop Manager Setup, you will see the Desktop Explorer prompt (Figure 5.19) if you enabled (or disabled) the **Turn on Explorer extension** in the Wizard.

**Figure 5.19** Desktop Explorer Prompt

- 1 Click **Yes** for the change to take effect, or **No** to ignore your change.
- 2 Once you log back in, the Desktop Manager Explorer extension should either be visible (sample Desktop Explorer extension is shown in Figure 5.20) in your Windows Explorer window (if you enabled it) or removed from Windows Explorer (if you disabled it).



**Figure 5.20** Desktop Explorer Extension in Windows Explorer

For details on working with the Desktop Explorer, see a variety of ways you can use Desktops features in [“Using Desktop Explorer”](#) on page 101.


# WORKING WITH PROFILES

This chapter discusses the following topics:

- “About Profiles” on page 57
- “Loading a Profile” on page 60
- “Creating a Profile” on page 60
- “Saving a Profile” on page 60
- “Deleting a Profile” on page 61
- “Enabling and Disabling Desktop Manager” on page 61
- “Starting the Desktop Manager Setup Wizard” on page 61

## About Profiles

---


 *Certain options, such as creating, saving, (and exporting), and deleting profiles, are only available to users with System Administrator access privileges.*

Profiles features can be used by both single-display and multi-display users.

Using the Profiles options, you can save all your Desktop Manager settings into a single file called a “profile”. To change how your desktop functions, you can subsequently load these profiles with a single “hot key” keystroke or by clicking the “Load Profile” option.

The profile contains all of the parameters for Desktop Manager, including multiple desktops and their backgrounds, application position memory (APM), individual application settings (IAS), and window management settings.

Profiles are a “snapshot” of your Desktop Manager settings. There is never an “active” profile; instead, you can reload your Desktop Manager settings “snapshot” and then edit it if you need to modify the settings.

 *The profile file is not updated as you change Desktop Manager settings. Use the “**Save Profile**” option to update the profile with your new Desktop Manager settings.*

## Benefits of Using Profiles

---

Using profiles features, you can tailor different Desktop Manager modes to more closely match your operating needs and then easily switch between profiles with a hot key.

You can use profiles to quickly switch your system configuration, depending on your needs.

- For example, if you have a laptop that is sometimes docked with an extra monitor and sometimes undocked, you may want to have dialog boxes pop up on the laptop's screen while undocked but while docked, have dialog boxes appear on the extra monitor. In this case, you can set up two profiles on your system; a docked version and an undocked version with different settings. When you switch configuration (i.e., dock or undock your laptop), you can load your configuration with a single keystroke.
- If you work in a company with an IT department, profiles are even more useful. For example, a System Administrator can define a custom Desktop Manager mode and roll it out in one step to a department or other defined group in the company rather than have to configure each workstation separately. This can help reduce training and support costs since everyone within a group or department can use a common Desktop Manager configuration that is tailored for their needs.

- 1 To access the Desktop Manager Profiles settings, open the Desktop Manager control panel.

(If you need help accessing the Desktop Manager control panel, see [“Accessing Desktop Manager And Its Settings”](#) on page 31.)

The Profiles page appears as the default.

- 2 [Figure 6.1](#) shows the Profiles page if Desktop Manager has not yet been enabled. In this case, click **Enable nView** to enable Desktop Manager.

If your Profiles page resembles [Figure 6.2](#), this means that Desktop Manager is already enabled.

**Figure 6.1** Profiles Settings *Before* Enabling Desktop Manager**Figure 6.2** Desktop Manager Profiles Page *After* Enabling Desktop Manager

## Loading a Profile


---

You can select a profile from the list and select **Load Profile** to load the profile.

- Examples of profiles you may see in the list are “generic”, “finance”, “CAD”, and “DCC”, depending on your NVIDIA GPU-based graphics card.
- You may see additional profiles set up specifically for your company or organization if your System Administrator has set up custom profiles.

## Creating a Profile


---

 *Only users with System Administrator privileges can create profiles.*

The **New Profile** allows you to create, name, and add a new profile that contains all of the current nView settings. Once saved, you can reload this profile at any time.


## Saving a Profile

---

 *Only users with System Administrator privileges can save (export) profiles.*


The **Save Profile** option lets you overwrite the existing selected profile with your current nView settings.

- Profiles are saved with the .tvp file extension in the Windows\nView directory.
- Once saved, you can reload this profile at any time.


 *When you are saving to the profile selected from the list, a warning message indicates that you are about to overwrite the selected profile. Click **Yes** to continue; otherwise, click **No**.*

## Deleting a Profile

---

 *Only users with System Administrator privileges can delete profiles.*

The **Delete Profile** option lets you to delete the selected profile.

 *When you are deleting the profile, a warning message indicates that you are about to lose all the settings in the selected profile you are about to delete. Click **Yes** to continue with the deletion process; otherwise, click **No**.*

## Enabling and Disabling Desktop Manager

---

The **Enable nView** (Figure 6.1) and **Disable nView** (Figure 6.2) options are toggles to enable or disable the nView Desktop Manager.

There are many other ways to enable or disable the Desktop Manager, as explained in “[Enabling and Disabling Desktop Manager](#)” on page 31.

## Starting the Desktop Manager Setup Wizard

---

Click the **Wizard** option to start the Desktop Manager Setup Wizard. For details on using the Wizard, see Chapter 3, “[Using the Desktop Manager Setup Wizard](#)” on page 44.

## Copying Profiles For Use on Another Computer

---

Since a profile is simply a Desktop Manager data file, it can be copied and pasted like any other file. Profile files are located in the Windows\nView directory on your hard disk and have a .tvp extension.

To copy a profile file for use on another system, follow these steps:

- 1 From the Windows\nView directory on your hard disk, copy the .tvp profile file you want to a desired location, such as a diskette (in drive A:) or other network location.
- 2 Then, be sure to paste this file to the Windows\nView directory on the computer where you plan to load this profile.
- 3 When you access the Desktop Manager Profiles settings on this new computer, you will see the name of the profile you just copied.
- 4 Select the profile and click **Load Profile** to load this profile.

# MANAGING WINDOWS AND APPLICATIONS

This chapter discusses the following major topics:

- “About Windows” on page 62
- “Summary of Windows Settings” on page 63
- “Window Controls” on page 65
- “Dialog Box Controls” on page 67
- “User Interface Control” on page 67

## About Windows

---

Windows management features apply mostly to multi-display configurations but also contains some desktop-specific settings that you can enable with the nView System Menu Extension options.

You can use Windows settings to specify how you want windows to operate on your desktops and/or display devices. For example, when you maximize an application under Span mode, it stretches across all display devices, which can be quite inconvenient. Using Windows settings, you can change this functionality to make the window only maximize to a single display device. Conversely, under Dualview modes, window management can make applications maximize to the entire desktop. These are some of the many features available under Windows management and discussed in this chapter.

A key benefit of using windows management features is that you no longer have to spend your time resizing, relocating, or searching for windows since you can specify how you want your windows to function.

## Summary of Windows Settings

To access the Desktop Manager Windows settings, follow these steps:

- 1 Open the Desktop Manager control panel.

If you need help accessing the Desktop Manager control panel, see [“Accessing Desktop Manager And Its Settings”](#) on page 31.

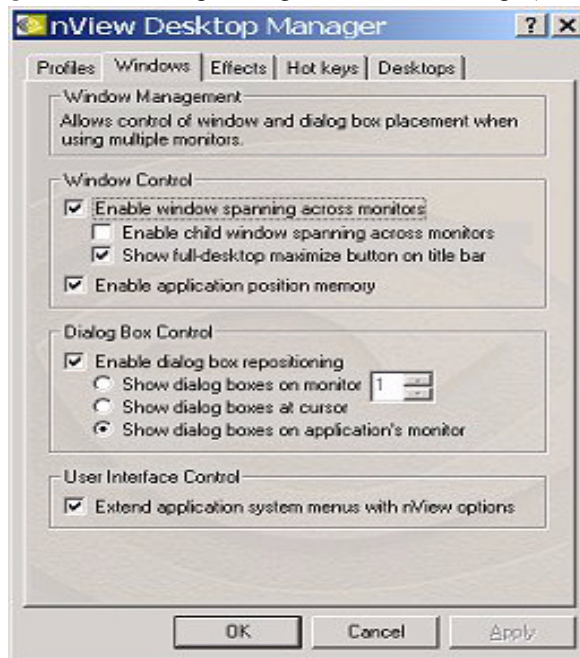
- 2 Click the **Windows** tab.

Figure 7.1 shows the Desktop Manager Windows page when the Windows Display Properties Settings properties page is set to DualView mode.

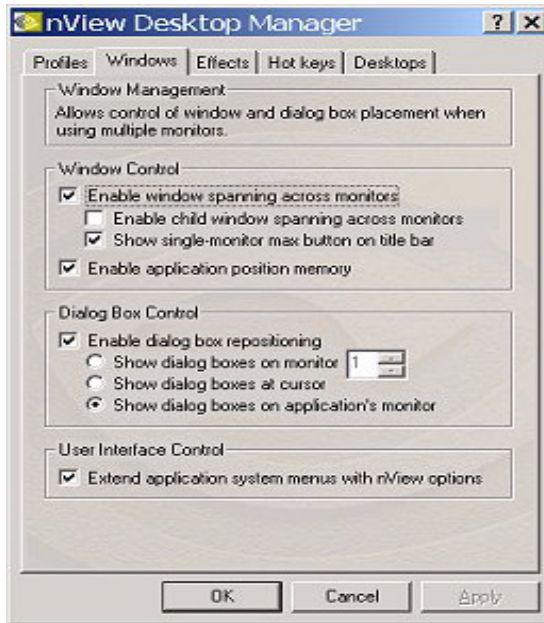
Figure 7.2 shows the Desktop Manager Windows page when the Windows Display Properties Settings properties page is set to access nView Span (Horizontal or Vertical) mode, as available under Windows 2000/XP.

There are slight differences in functionality between these two major modes, as explained in [“Show full-desktop maximize option on title bar”](#) on page 65.

**Figure 7.1** Desktop Manager: Windows Settings (DualView)





**Figure 7.2** Desktop Manager: Windows Page (nView Span mode)

The settings in the Windows page above are described in these sections:

- “Window Controls” on page 65
  - “Enable Window Spanning Across Monitors” on page 65
  - “Enable child window spanning across monitors” on page 65
  - “Show full-desktop maximize option on title bar” on page 65
  - “Enable Application Position Memory (APM)” on page 66
- “Dialog Box Controls” on page 67
  - “Enable Dialog Box Repositioning” on page 67
  - “Show dialog boxes on monitor n” on page 67
  - “Show dialog boxes at cursor” on page 67
  - “Show dialog boxes on application’s monitor” on page 67
- “User Interface Control” on page 67
  - “Enabling System Menu Extensions With nView Options” on page 67
  - “nView System Menu Extension Options” on page 70

# Window Controls

---

## Enable Window Spanning Across Monitors

This options allows windows to span (display) across monitors. When the option is disabled, all windows are prevented from spanning across monitors.

**Default:** Option is disabled.

## Enable child window spanning across monitors

To access this option, you must first enable the “Enable window spanning across monitors” option.

**Default:** Option is disabled. This means that child windows cannot span monitors even if the parent window does.

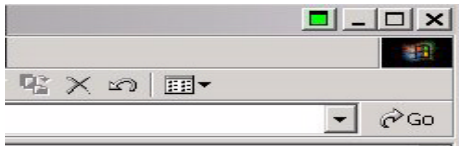
## Show full-desktop maximize option on title bar

To access this option, you must first enable the “Enable window spanning across monitors” option.

This option is displayed as “**Show single-monitor max button on title bar**” (Figure 7.2) if you are in nView Span (Horizontal or Vertical) mode under Windows 2000/XP. See “Note” below.

When you check this option, the nView window maximize button (green square on the left of the title bar icons in Figure 7.3) is added to title bars on all application windows.

**Figure 7.3** nView Application Title Bar Maximize option




**♪** From your open application, you can click this button to toggle a custom maximized state for your application window in multi-display configurations.

- In **Windows DualView and nView Standard and Clone modes**, the application window maximizes to the *full desktop*.
- In **nView Span (Horizontal and Vertical) modes** as available under Windows 2000/XP, the application window maximizes to a *single monitor*. Therefore, the option is named “**Show single-monitor max button on title bar**” (Figure 7.2).

## Enable Application Position Memory (APM)

---


 *In this guide, the acronym “APM” may be used for **Application Position Memory** (also called “Position Memory”), which should not be confused with the APM acronym that’s used for Advanced Power Management*

When you check the “Enable application position memory” option to enable APM, as soon as you close the application, nView stores (thus “remembers”) information about the location of the application, the application window size and state, and even the application’s desktop location (if you run multiple desktops). When you start the application again, Desktop Manager restores all the settings from the last time you used the application.


In addition to the application position information, the APM feature can also save and then restore any special nView features that you have selected for the application.


For “each” application that you want to have “remembered”, you must enable APM through its nView system menu extension as well as have APM enabled “globally” on the Desktop Manager Windows page (Figure 7.2).

- 1 From the Desktop Manager Windows page, click “**Enable application position memory**” to enable the option.
- 2 The click “**Extend application system menus with nView options**” to enable this option.
- 3 Click **Apply**.
- 4 To access an application’s system menu, right click the application window’s title bar, click **nView Extensions** (Figure 7.4), then **Position Memory**. This enables the APM feature for the application.

 *If you haven’t completed step 1 above, the Position Memory option will be grayed.*

*See discussion of the [Application Position Memory \(APM\) option in “Enabling System Menu Extensions With nView Options”](#) on page 67.*

 *APM functions only on the main parent window (the default launch window). APM settings on spawned windows (such as E-mail messages under Outlook) will not be saved. As child windows are created, they will inherit the settings of the main window*

 *If you use APM on several application, you can turn it off globally using the global setting on the Windows page.*

## Dialog Box Controls

---

### Enable Dialog Box Repositioning

---

This option lets you specify the location of dialog boxes.

**Default:** Option is enabled.

### Show dialog boxes on monitor *n*

This option repositions dialog boxes to a specific display device, where *n* is the number of the display device.

### Show dialog boxes at cursor

This option repositions dialog boxes to the display device on which the cursor is located.

### Show dialog boxes on application's monitor

This option repositions dialog boxes centered on the parent application's display.

## User Interface Control

---

### Enabling System Menu Extensions With nView Options

---

You can access Desktop Manager features quickly and easily from any application using the nView system menu extension. Every window has a system menu for basic tasks such as moving or resizing the window. Desktop Manager extends this menu to add features such as making the window transparent or moving the window to another display device or desktop.

You can also access nView application-specific extensions from the system menu. For example, with certain applications such as Internet Explorer 5.0 and Microsoft Outlook, you can select where Microsoft Outlook attachments open or create links between two Internet Explorer windows.

To enable nView system menu extension for each of your applications, follow these steps:

- 1 From the Desktop Manager Windows page, click the check box “**Extend application system menus with nView options**” to add the **nView Extensions** system menu options to every application system menu.

(To disable the option and remove **nView Extensions** system menu options from every application system menu, click the check box to “uncheck” it.)

**2 Click Apply.**

Note that these options are almost the same as the ones that are “globally” available from the Desktop Manager “Windows” page (Figure 7.1).

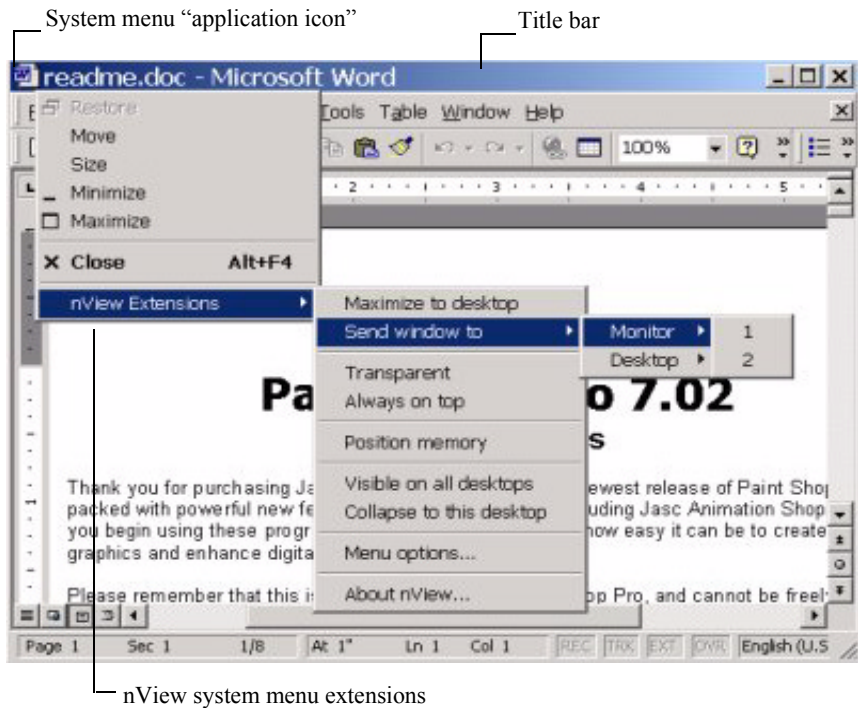
The features available in this menu are described in detail in “nView System Menu Extension Options” on page 70.

**3 To access the system menu, you can use any *one* of these methods:**

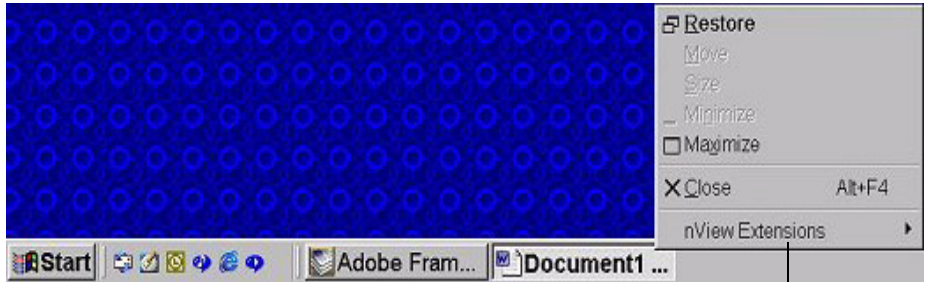
- Right click an application window’s title bar (shown in Figure 7.4).
- Click the system menu “application icon” (shown in Figure 7.4) located on the left side of the title bar.
- Right click the application on the taskbar (shown in Figure 7.5).

Figure 7.4 through Figure 7.7 illustrate the menus options that are available from an application’s system menu when you select the **nView Extensions**.

**Figure 7.4** Desktop Manager: Accessing nView Extensions Menu Options (1)

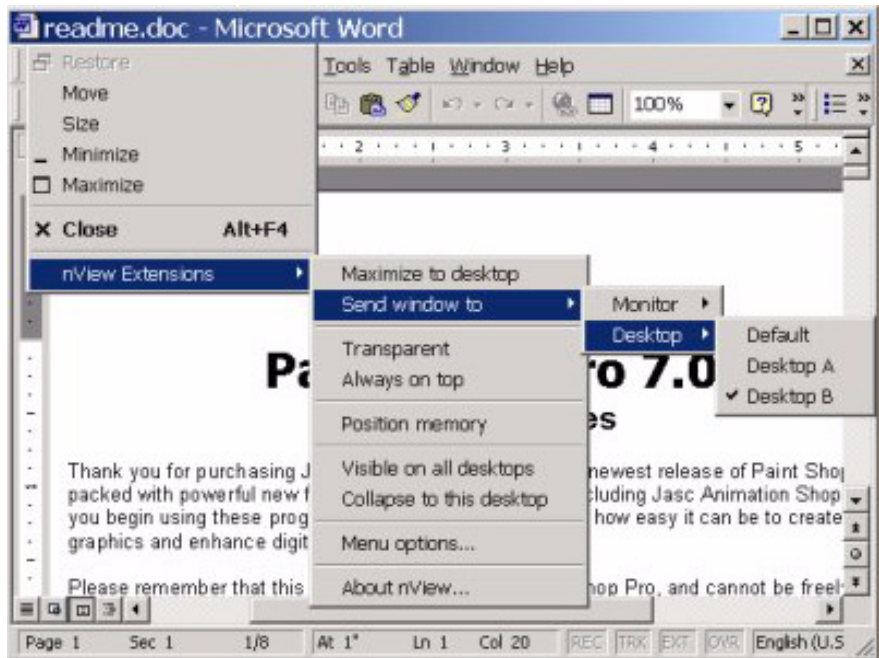


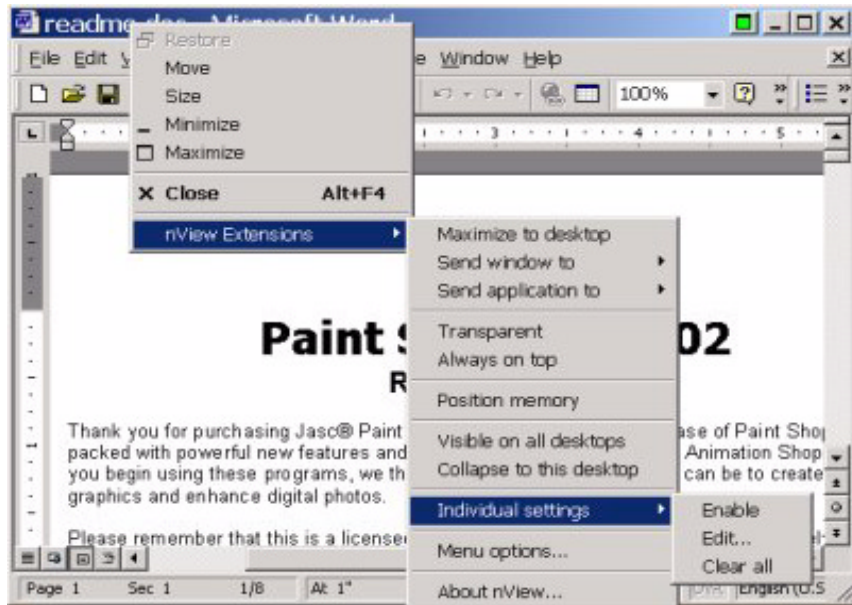
**Figure 7.5** Desktop Manager: Accessing nView Extensions Menu Options (2)



Right click the application icon in the Windows task bar to display the nView system menu extensions

**Figure 7.6** Desktop Manager: nView Extensions Menu Options (1)



**Figure 7.7** Desktop Manager: nView Extensions Menu Options (2)

## nView System Menu Extension Options

---

### Maximize to Monitor/Desktop

This option performs the same action as the max/restore title bar option that you can add as explained earlier in [“Show full-desktop maximize option on title bar” on page 65](#). This option maximizes the application window to the current display or to the entire desktop; depending on whether you are running in Windows DualView or nView Span mode.

### Send window to . . .

- **Monitor *n***: A pop-up menu displays the number (*n*) of active display devices in your setup. Select a display device number, which will represent the display to which you want the window to move.
- **Desktop *n***: A pop-up menu displays each defined and active desktop name, represented by *n*, including selections for the default and current desktop. Select a desktop. The active window will be sent that desktop.

## Send application to . . .

- **Monitor *n*:** A pop-up menu displays the number (*n*) of active display devices in your setup. Select a monitor number, which will represent the monitor on which you want the application to move.
- **Desktop *n*:** A pop-up menu displays each defined and active desktop name, represented by *n*, including selections for the default and current desktop. Select a desktop. The application will be sent to that desktop. For an application that has more than one window (e.g., Microsoft Outlook), every owned window of the active window (or active window parent) is moved to the selected desktop or monitor.

## Transparent (alpha blended)

Click this check box to toggle transparency on/off for the window. This option is saved as an “application position memory” (APM) setting when APM is enabled.

## Always on top

Click “**Always on top**” to toggle the option on/off for the window. This option is saved as an APM setting when APM is enabled.

When a window is marked as being always on top, it will always be placed in front of any other window. So you can use this settings on windows that you don’t want to appear behind or obscured by other windows.

If two windows have the “Always on top” enabled and they are dragged on top of one another, then the last active window is placed in the top position.

## Application Position Memory (APM)

Click the **Position Memory** check box to toggle (enable/disable) Application Position Memory (APM) for the parent application if and only if APM is enabled (globally) on the Desktop Manager Windows page ([Figure 7.1](#) or [Figure 7.2](#)).

*♪ If Application Position Memory is disabled (unchecked) in the Windows page, this option is grayed out and has no effect.*

APM functions only on the main parent window (the default launch window). APM settings on spawned (child) windows, such as E-mail messages in Microsoft Outlook, will not be saved. As child windows are created, they will inherit the settings of the main application window.



## Clearing APM

You can clear out APM settings in one of three ways.


- Load a profile, which resets your application database.
- Use the **Individual Application Setting > Clear All** option (shown in [Figure 7.7](#)) and explained in “[Individual Application Settings: Clear all](#)” on page 73.
- Uninstall and re-install your NVIDIA Display Driver software.

## Visible on all desktops

Click “Visible on all desktops” to toggle the visibility (on/off) of the window on all desktops.

Enabling this option causes the window to appear on all desktops. This option is saved as an APM setting when APM is enabled.

## Collapse to desktop

 *This option is only available if the application has the “Visible on all desktops” option enabled.*

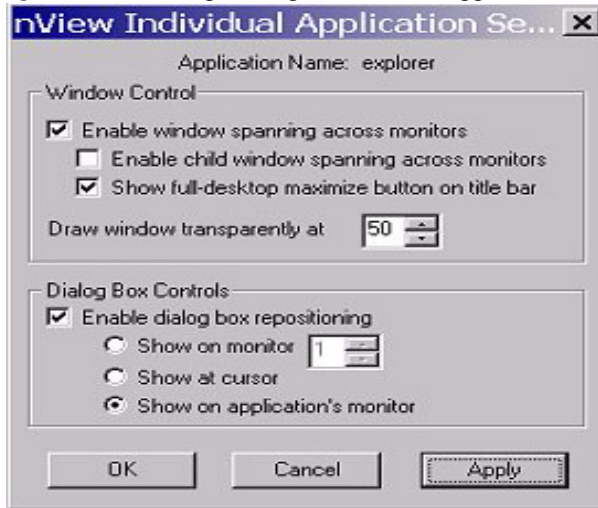
Enabling “**Collapse to desktop**” disables the “Visible on all desktops” option and moves the active application window to the current desktop.

## Individual Application Settings (IAS): Enable

**Enable** lets you turn on/off the IAS for the application without losing those settings.

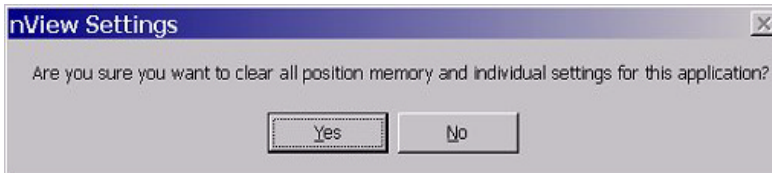
## Individual Application Settings (IAS): Edit

**Edit** opens the IAS dialog box ([Figure 7.8](#)) and selects the application (or the parent application). Using this dialog box, you can modify the same settings that are available in the Desktop Manager Windows page ([Figure 7.1](#) or [Figure 7.2](#)) but have them *apply for the specific application*. Click Apply when you are done modifying the settings.

**Figure 7.8** Desktop Manage: Individual Application Settings Dialog Box

## Individual Application Settings: Clear all

**Clear all** displays the message in [Figure 7.9](#).

**Figure 7.9** nView Desktop Manage: Windows

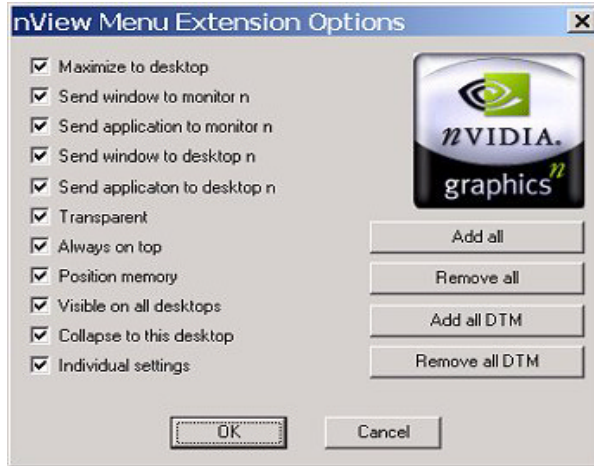
- Click **Yes** only if you want to erase all IAS *and* any APM (application position memory) settings that Desktop Manager may have stored for the application.
- Otherwise, click **No**.

## Another Method of Clearing IAS

Another way to clear all IAS settings for an application is by loading a profile, which resets your application database.

## Menu Options

[Figure 7.10](#) shown the dialog box that appears when you click **Menu Options** from the application's **nView Extensions** menu.

**Figure 7.10** nView Menu Extensions Options Dialog Box

The options that appear in this dialog box (Figure 7.10) correspond to those available from the nView Extensions menu as shown in Figure 7.4, Figure 7.6, and Figure 7.7. If you do not want to have all options available, enable/disable (check/uncheck) one or more options, as you need.

**F** *Once you disable (uncheck) an option, you will no longer see the option in the nView Extensions submenu. Note that the nView Extensions menu options are global (affect all applications).*

Enable or disable one or more of the following options by clicking the check box next to each option to insert or remove the check mark.

- Maximize to desktop
- Send windows to monitor *n*
- Send application to monitor *n*
- Send windows to desktop *n*
- Send application to desktop *n*
- Transparent
- Always on top
- Position memory
- Visible on all desktops.
- Collapse to this desktop
- Individual Settings

**Add all:** Click this option if you want to enable all of the above options.

**Remove all:** Click this option if you want to disable all of the above options.

**Add all DTM:** Click this option if you want to add only the multiple desktop-specific options.

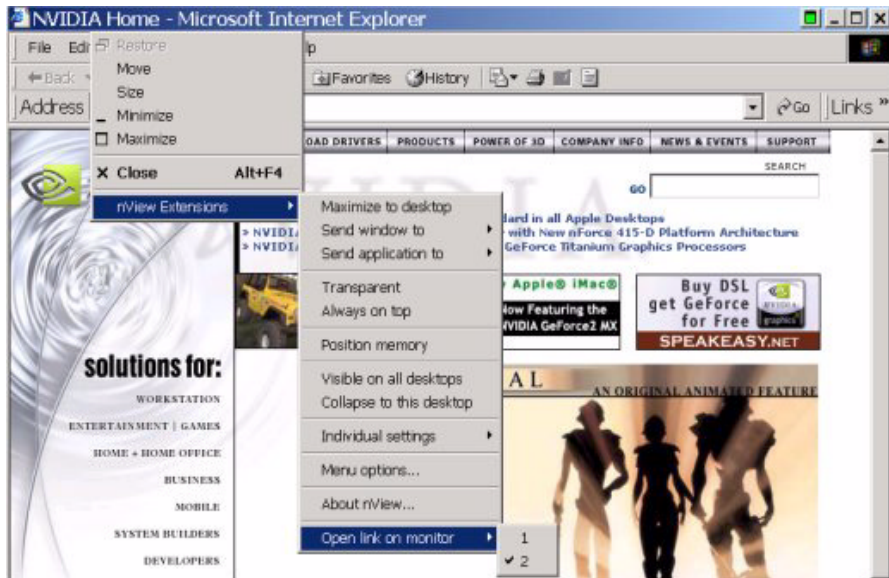
**Remove all DTM:** Click this option if you want to remove only the multiple desktop-specific options.

## Internet Explorer Options

nView Extensions adds a new menu item “**Open link on monitor  $n$** ” (Figure 7.11) on Internet Explorer 6.0 browser, where  $n$  represents the monitor (display device) number. For example, “1” is the only choice when only one display device is attached; 1 and 2 are choices when two display devices are attached; 1, 2, and 3 are choices when three display devices are attached, and so on.

Once you set this option on a primary Internet Explorer window, as shown in Figure 7.11, when you **double right click** any link from this primary window, the browser window for that link opens on the display device you selected with the “Open link on monitor” option.

**Figure 7.11** nView Menu Extensions for Internet Explorer (6.0 or later version)



## CHAPTER

## 8

# 3D AND OTHER WINDOW TREATMENT EFFECTS

The following major topics are discussed in this chapter:

- “About Effects” on page 76
- “Summary of Effects Settings” on page 77
- “Window Drawing Enhancements” on page 78
- “Zoom Settings” on page 79

## About Effects

---

The Effects module of Desktop Manager provides 3D features for windows and dynamic zoom functionality on the desktop.

Effects features can be used by both single-display and multi-display users.

Among the features you can enable from the Effects page is a resizable “zoom window” to zoom in on areas of the desktop for easier reading or for fine editing. You can also add transparency support to windows on the desktop.

Key benefits of using Effects features are that

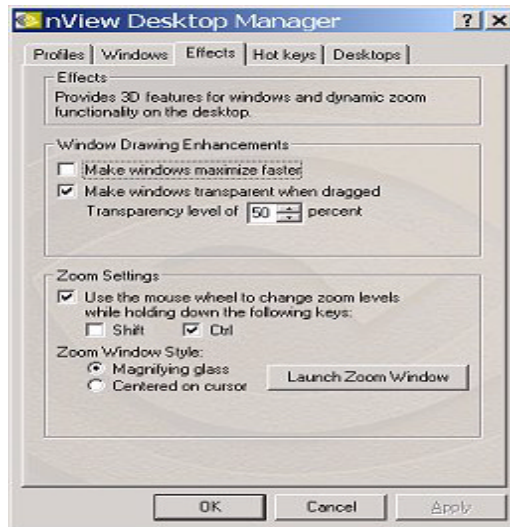
- You don't have to change resolutions to view and/or edit small graphics or text – you can simply open up your “zoom” window.
- Making a window transparent effectively gives you more space on your desktop

## Summary of Effects Settings

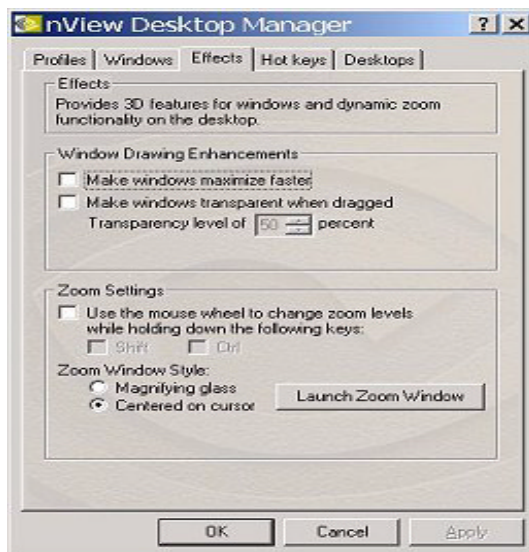
To access the Desktop Manager Effects settings (Figure 8.1)

- 1 Open the Desktop Manager control panel and click the **Effects** tab.
- 2 If you need help accessing the Desktop Manager control panel, see “Accessing Desktop Manager And Its Settings” on page 31.

**Figure 8.1** Desktop Manager: “Effects” Page(1)



**Figure 8.2** Desktop Manager: “Effects” Page (2)



If you need help accessing the Desktop Manager control panel, see [“Accessing Desktop Manager And Its Settings”](#) on page 31.

The settings in the Effects page are described in these sections:

- [“Window Drawing Enhancements”](#) on page 78
  - [“Make Windows Maximize Faster”](#) on page 78
  - [“Make Windows Transparent When Dragged”](#) on page 78
    - [“Transparency Level”](#) on page 79
- [“Zoom Settings”](#) on page 79
  - [“Use the Mouse Wheel to Change Zoom Levels”](#) on page 79
  - [“Centered on Cursor”](#) on page 80
  - [“Zoom Window Style”](#) on page 80
    - [“Magnifying Glass”](#) on page 80
  - [“Launch the Zoom Window”](#) on page 80
    - [“Zoom Window Menus”](#) on page 81
    - [“Zoom Level”](#) on page 81
    - [“Zoom Refresh”](#) on page 81
    - [“Zoom Style”](#) on page 82
    - [“Using Cursor Style Zoom”](#) on page 82
    - [“Using Magnifying Glass Style Zoom”](#) on page 83

## Window Drawing Enhancements

---

### Make Windows Maximize Faster

---

This option accelerates Open, Maximize, and Restore window functions.

### Make Windows Transparent When Dragged

---


This option enables window transparency when windows are dragged. Windows become transparent as you hold down the mouse option while on the

window's title bar, allowing you to quickly see what is underneath the window. When you release the mouse option, the window becomes opaque.

- Notes**
- Transparency is only supported on Windows 2000/XP.
  - Transparency can take a lot of processing power. If Desktop Manager detects that your system may be sluggish when dragging large transparent windows, you will be given an option to disable transparent window dragging for windows larger than a certain size.
  - Transparency is disabled when a 3D application is running.
  - Some applications do not support transparency, in which case, an “**About this app . . .**” menu choice is added to the nView Extension menu for that application.

### Transparency Level

This option sets the degree of transparency for a window that is being moved. The higher the percentage you select, the more transparent the window appears while being moved.

 *Transparency percentage values are limited to a maximum of 80%.*

## Zoom Settings

---

### Zoom Features: Display Properties vs. Desktop Manager

---

If you are using an NVIDIA dual-display GPU-based graphics card, you have several zoom options available.

- If you just want a Windows tool that lets you zoom certain areas of the desktop in a window, use the “Zoom Window” tool described in this section.
- If you are specifically interested in zooming video playing back on your computer from a DVD or other video source, it is recommended that you use the Overlay Video Mirroring controls described in the *nView Display Manager User's Guide*. You can set up Video Mirroring to zoom and automatically display full-screen video on your second display.

### Use the Mouse Wheel to Change Zoom Levels

---

- Enable the “**Use the mouse wheel to change zoom levels...**” option if you want to use the mouse wheel to change zoom levels when a zoom window is active.



In addition, or as an alternative, you can also use the “Zoom Level” menu from the Zoom Window to change zoom levels. See [“Zoom Window Menus” on page 81](#).

- If you want to use the mouse wheel to change zoom levels while holding down one of the following keys (**Shift** or **Ctrl**), then follow these steps:
  - a Click the **“Use the mouse wheel to change zoom levels. . . .”** check box to enable the option.
  - b Then click **Shift** and/or **Ctrl**.
  - c Click **Apply**.

## Zoom Window Style

---

The zoom mode of “magnifying glass” is also supported. This mode lets you drag a “magnifying glass” style window around the desktop to zoom. This window lets you edit the area being magnified.

### Magnifying Glass

This option creates a magnifying glass style zoom window when you launch a Zoom Window. The magnifying glass zoom window contains a white square inside the zoom window. For details on using this option, see [“Using Magnifying Glass Style Zoom” on page 83](#).

 *Magnifying Glass zoom is not supported if any of your screens are in 256 color mode or if there is a 3D application running.*

### Centered on Cursor

This option creates a zoom window that displays a magnification of the area around the mouse cursor when a zoom window is launched. For details on using this option, see [“Using Cursor Style Zoom” on page 82](#).

## Launch the Zoom Window

---

The **Launch Zoom Window** option opens a “Zoom Window” that can display a magnification of a selected area of your screen (i.e., “Magnifying Glass” style of zooming) or display a zoomed view of the area around your cursor in a window (i.e., “Cursor” style zooming).

Using the Zoom Window, you can change zoom levels, the update rate of the zoomed data, and even toggle the window on or off with a hot key.

## Zoom Window Menus


---

The following topics are discussed in this section:

- [Zoom Level](#)
- [Zoom Refresh](#)
- [Zoom Style](#)
- [Using Cursor Style Zoom](#)
- [Using Magnifying Glass Style Zoom](#)

### Zoom Level

Zoom Level can be set from 1x to 10x ([Figure 8.3](#)).

 You can also change zoom levels with the mouse wheel by itself or in combination with the **Ctrl** and/or **Shift** keys if you selected this option in the *Zoom Settings* section on the *Effects* page.

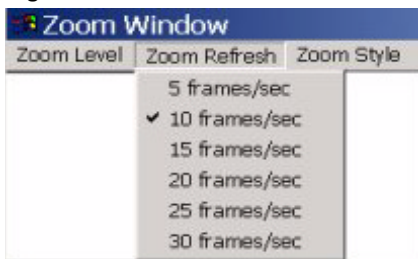
**Figure 8.3** Zoom Level Menu



### Zoom Refresh

Zoom Refresh can be set from 5 frames/second to 30 frames/seconds, in increments of 5 ([Figure 8.4](#)).

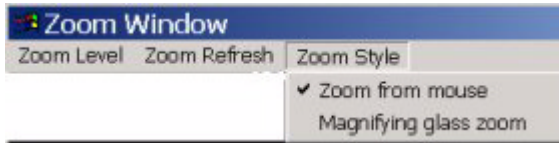
**Figure 8.4** Zoom Refresh Menu



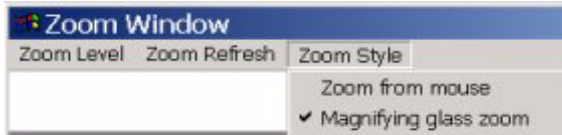
## Zoom Style

Zoom Style can be set to any one of the following settings as shown in [Figure 8.5](#) and [Figure 8.6](#).

**Figure 8.5** Zoom Style Menu (Centered on cursor)



**Figure 8.6** Zoom Style Menu (Magnifying glass)

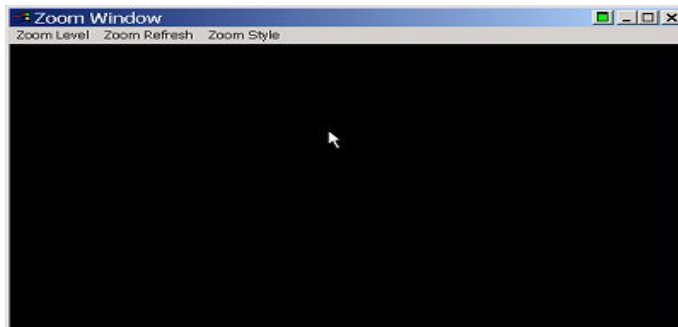


## Using Cursor Style Zoom

The **Zoom from mouse** ([Figure 8.5](#)) option is equivalent to “**Centered on cursor**”, which you can set on the Effects page ([Figure 8.2](#)).

When you click the **Launch Zoom Window** option with the **Centered on Cursor** option enabled, the cursor style zoom window appears ([Figure 8.7](#)).

**Figure 8.7** Cursor Style Zoom Window

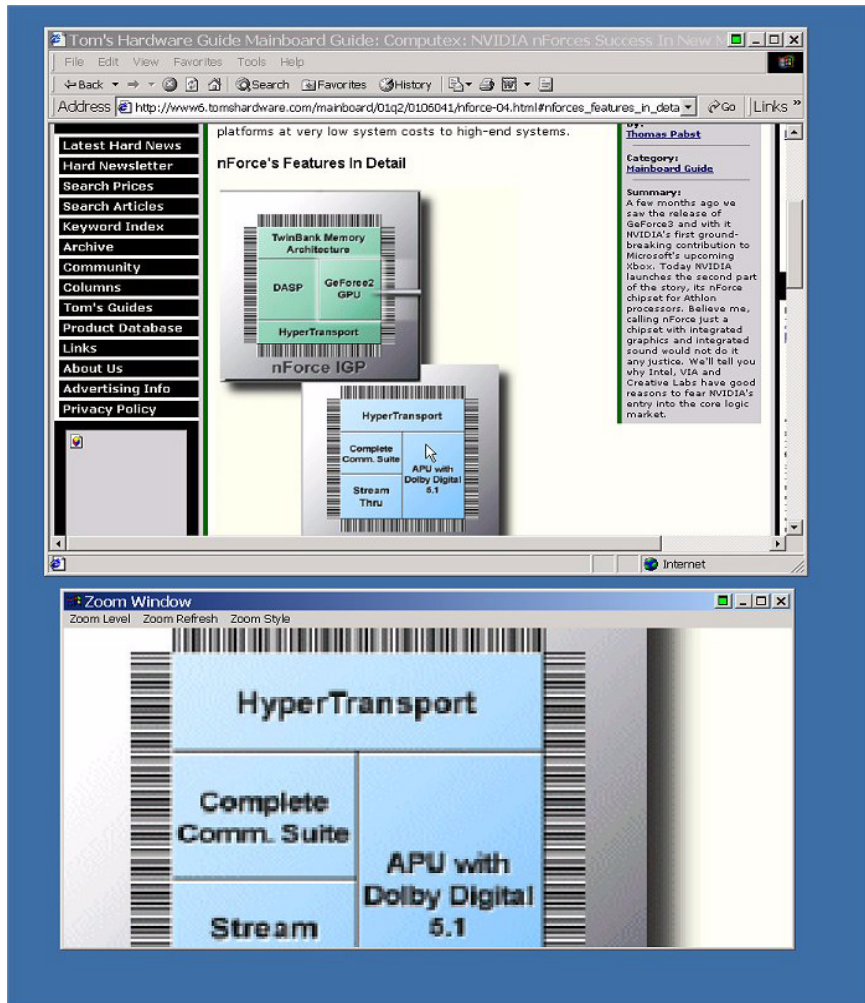


To use the Cursor style zoom, follow these steps:

- 1 Move your mouse cursor to the area of your screen (or open application) that you want to zoom (shown in the top window in [Figure 8.8](#))  
You will see the area magnified in the Zoom Window, as shown in the bottom window in [Figure 8.8](#).
- 2 You can keep moving your mouse cursor to any area you want to zoom.
- 3 Adjust the zoom level to increase or decrease the size the contents you are viewing. To adjust the zoom level you can either use the mouse wheel (or the

mouse wheel and the **Ctrl/Shift** key options) or the Zoom Level menu options on the Zoom Window.

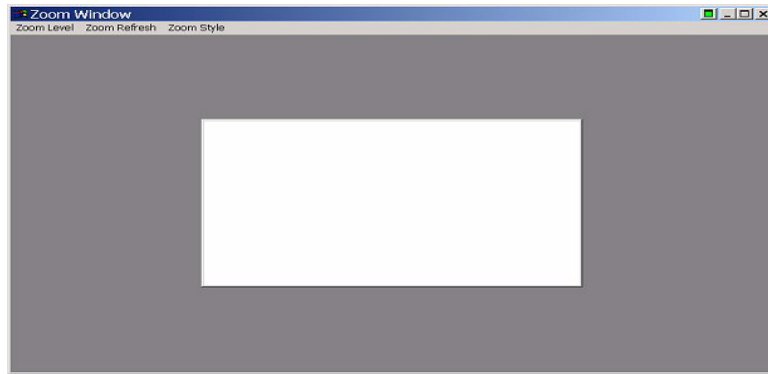
**Figure 8.8** Cursor Style Zoomed Area in Zoom Window



## Using Magnifying Glass Style Zoom

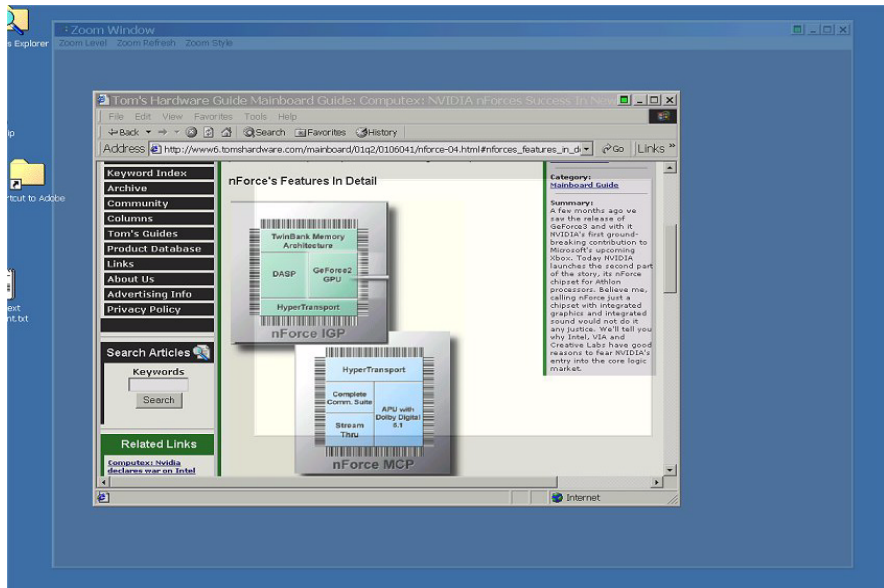
**Magnifying glass zoom** option (Figure 8.6) is equivalent to the “Magnifying Glass” option, which you can set on the Effects page (Figure 8.2).

When you click the **Launch Zoom Window** option from the Effects page with the **Magnifying glass** option enabled, the magnifying glass style zoom window appears with a white square inside the window (Figure 8.9).

**Figure 8.9** Magnifying Glass Style Zoom Window

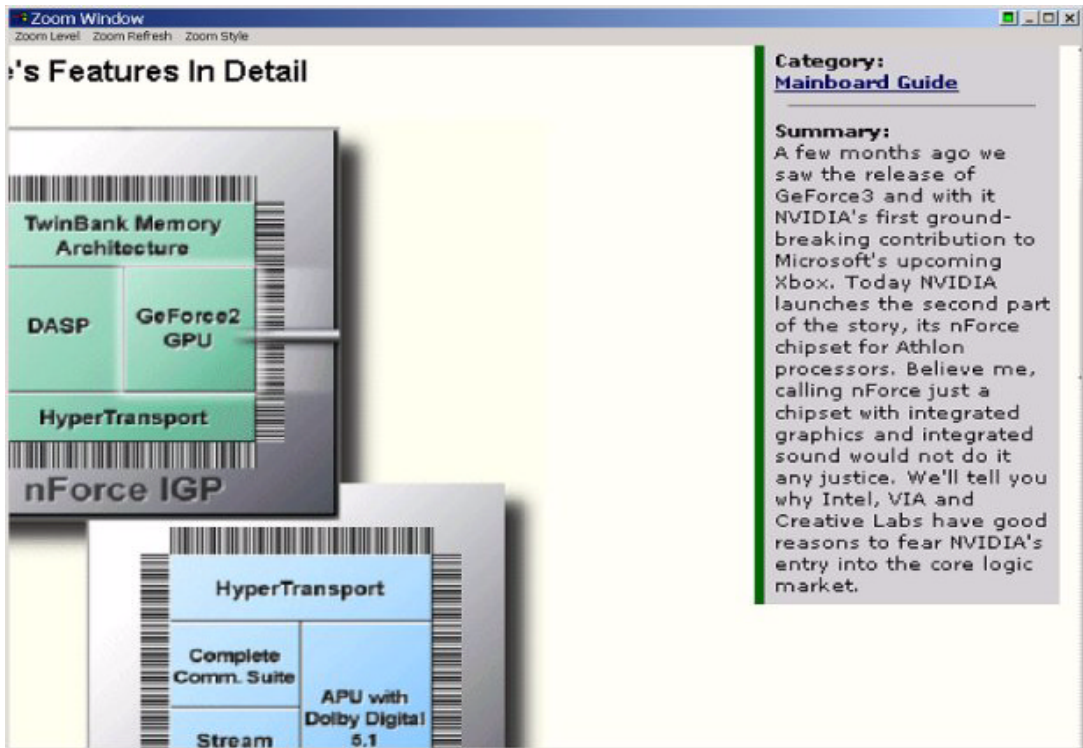
To use the Magnifying Glass style zoom, follow these steps:

- 1 Adjust the zoom level to increase or decrease the size of the white square. To adjust the zoom level you can either use the mouse wheel (or the mouse wheel and the **Ctrl/Shift** key options) or the Zoom Level menu options on the Zoom Window.
- 2 Click on the title bar of the Zoom window and drag the zoom window over the area on the screen that you want to magnify so that the transparent white square encompasses the area to magnify. [Figure 8.10](#) shows an example of the magnifying glass style zoom window covering an area of an open window. Note the white box surrounding the display area.

**Figure 8.10** Magnifying Glass Style Zoom Window Over Zoom Area

- 3 Release the mouse option. The section of the screen inside the transparent white square now becomes magnified to fill the entire zoom window. [Figure 8.11](#) shows the result of a magnifying glass zoom.

**Figure 8.11** Magnifying Glass Style Zoomed Area in Zoom Window



## CHAPTER

## 9

# USING HOT KEYS

The following topics are discussed in this chapter:

- “About Hot Keys” on page 86
- “Selecting an Action” on page 87
- “Assigning a Key or Key Combination to an Action” on page 89
- “Adding a Hot Key” on page 90
- “Removing a Hot Key” on page 90
- “Removing All Hot Keys” on page 90
- “Active Hot Keys List” on page 91

## About Hot Keys

---

The Hot Key features can be used by both single-display and multi-display users.

nView lets you set up hot keys (shortcut keys or key combinations.) to access and perform virtually every action of the Desktop Manager. The key benefits of using hot keys is quick access to common functions with a single keystroke.

Using the Hot Keys features (Figure 9.1), you can

- Quickly add new hot keys to the list through selecting from available actions and then selecting a keystroke combination to invoke those actions.
- View a list of hot keys that you have defined for your system.

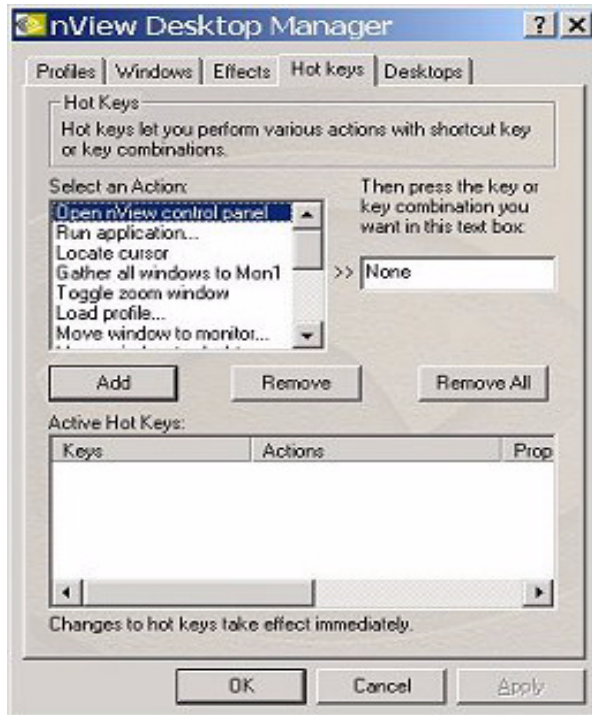
To access the Desktop Manager Hot Keys settings (Figure 9.1)

1 Open the Desktop Manager control panel.

If you need help accessing the Desktop Manager control panel, see “Accessing Desktop Manager And Its Settings” on page 31.

2 Click the **Hot Keys** tab.

**Figure 9.1** Desktop Manager: “Hot Keys” Page



## Selecting an Action

This list box displays a list of actions that can be performed when you press a key or combination of keys. Here are the actions and their descriptions:

- “**Open nView control panel**” opens the Desktop Manager control panel.
- “**Run application...**” runs a user-specified application. Note that after selection, a browse file dialog appears where you can select the program file you want to run.
- “**Locate cursor**” highlights the area around the cursor allowing it to be located on the desktop.



- “**Gather all to Mon1**” moves all open windows and dialog boxes on your system to monitor 1 of the default desktop.
- “**Toggle zoom window**” shows and hides the zoom window.
- “**Load profile...**” loads a saved profile.

After you enter the keystroke in the text box and click **Add**, a list box appears with all possible profiles. Choose a profile to be loaded with the hot key you assigned.

- “**Move window to monitor...**” moves the active window to a user-specified monitor.

After you enter the keystroke in the text box and click **Add**, a list box appears with all possible monitor targets. Choose a monitor on which you will move a window with the hot key you assigned.

- “**Move window to desktop...**” moves the active window to a user-specified desktop.

After you enter the keystroke in the text box and click **Add**, a list box appears with all possible desktop targets. Choose a desktop on which will move a window with the hot key you assigned.

- “**Max/Restore window**” toggles a maximize/restore function on the active window.
- “**Toggle transparency**” toggles the active window between being transparent or opaque.
- “**Toggle always on top**” toggles the active window between being always on top or not being on top.
- “**Show on all desktops**” toggles the active window between showing on all desktops or on a single desktop.
- “**Collapse to desktop**” causes the active window to show on the current desktop only.

- “**Activate desktop...**” switches the display to a user-specified desktop.

After you enter the keystroke in the text box and click **Add**, a list box appears with all possible desktop targets. Choose a desktop that you will activate or “switch to” with the hot key you assigned.

- “**Next desktop**” switches the display to the next desktop.
- “**Previous desktop**” switches the display to the previous desktop.

## Assigning a Key or Key Combination to an Action

This text box allows you to select the key or combination of keys you want to use to perform the selected action from the list of hot key actions.

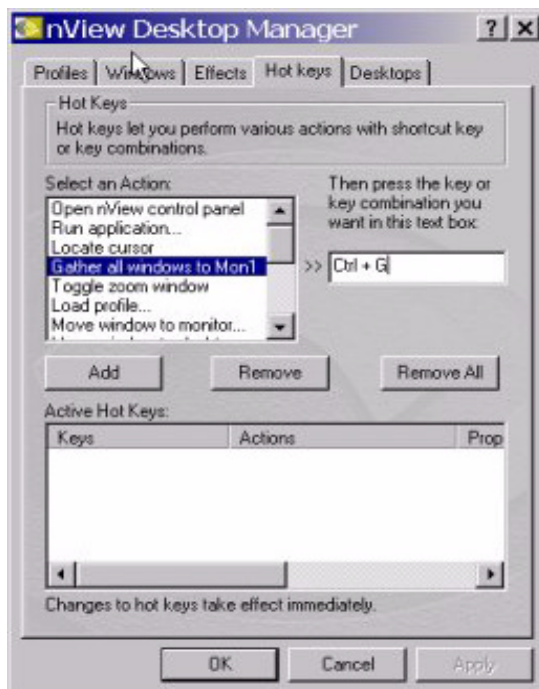
To use the text box, follow these steps:

- 1 Click the action in the list box to highlight it.
- 1 Click in the text box to display your cursor.
- 2 Press the key or keys you want to use for the selection action.

For example, if you press the **Ctrl** key followed by the **G** key, **Ctrl + G** appears in the text box, as shown in [Figure 9.2](#).

**⚠** The keys *Tab*, *Enter*, *Escape*, *A - Z*, *a - z*, *1-9*, and *Windows-defined system keys such as F1 or Alt-F4* are not valid hot keys and will not be accepted.

**Figure 9.2** Hot Keys: Entering Keys




- 3 Next, you need to add the key(s) you entered. See the next section, [Adding a Hot Key](#).

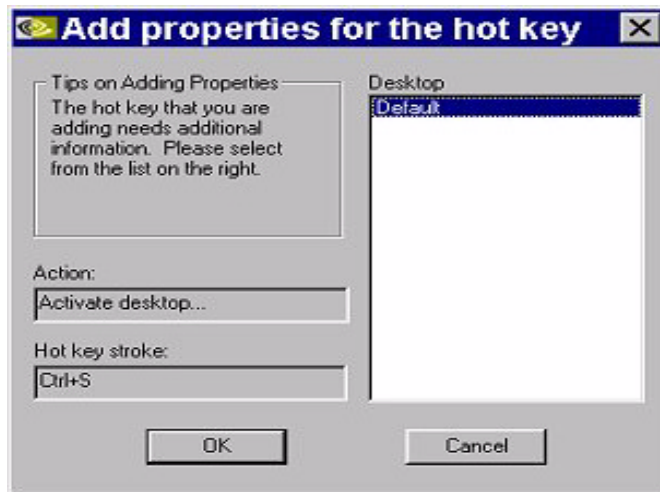
## Adding a Hot Key

---

When you click **Add**, the selected hot key action and keystroke combination are added to the Active Hot Keys list. Once a hot key is added, it is active and available for use.

 *When you click the **Add** option and your hot key requires additional information such as a desktop or monitor, the Add Properties dialog box appears (Figure 9.3). If your hot key does not require additional information, this dialog box will not appear.*

**Figure 9.3** Hot Keys Add Properties



- Only one action can be linked to a hot key. If you attempt to add an action to a hot key that is already defined, an error message appears.
- More than one hot key can be assigned to the same action.

## Removing a Hot Key

---

The **Remove** option removes the selected hot key from the Active Hot Keys list. Once a hot key is removed, it is no longer active or available for use.

## Removing All Hot Keys

---

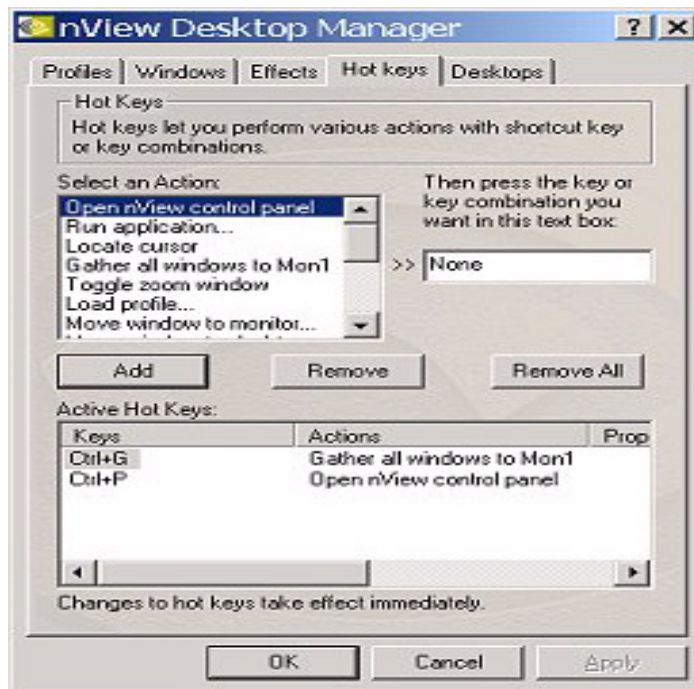
The **Remove all** option removes all hot keys from the Active Hot Keys list. Once the hot keys are removed, they are no longer active or available for use.

## Active Hot Keys List

The Active Hot Keys list box displays a list of hot keys that have been assigned and are currently active. Figure 9.4 shows parts of an Active Hot Keys list.

The Active Hot Keys list box displays the hot key itself (e.g., **Ctrl + G**), the hot key action (for example, “Gather all windows to Mon1”), and then any further information for that hot key, such as Properties and Application Name information, if applicable. Use the scroll bar at the bottom of this list box to scroll to the right to see all the information columns for a hot key

**Figure 9.4** Active Hot Keys List



# CHAPTER 10

## DESKTOPS MANAGEMENT

The following major topics are discussed in this chapter:

- “About Desktops” on page 92
- “Notes Before You Begin” on page 94
- “Desktops List” on page 94
- “Creating Desktops” on page 94
- “Activating or Switching Desktops” on page 95
- “Renaming Desktops” on page 97
- “Removing Desktops” on page 97
- “Changing Background: Wallpaper” on page 97
- “User Interface Settings” on page 99
- “Using Desktop Explorer” on page 101

### About Desktops

---

You can use the Desktop Manager “Desktops” page to create and configure up to 32 different “virtual” desktops whether you are using a single monitor or multiple monitors.

If you are using a single monitor, you can create a lot of space by distributing one or more applications among different desktops to prevent application clutter on your window. Desktop Manager reduces your desktop clutter by letting you easily move applications to other desktops thus avoiding the need to open/close or minimize/maximize applications in order to navigate between them. So,

window clutter is reduced without compromising performance or using extra keystrokes.

You can assign customizable names to desktops you create and easily switch between desktops using assigned hot keys, the Windows Explorer Desktops extension, or even the NVIDIA QuickTweak icon, as explained later in this chapter.

A variety of methods to create, customize, manage, rename, remove, and switch between multiple desktops, as well as easily move applications from one desktop to another are discussed in this chapter.

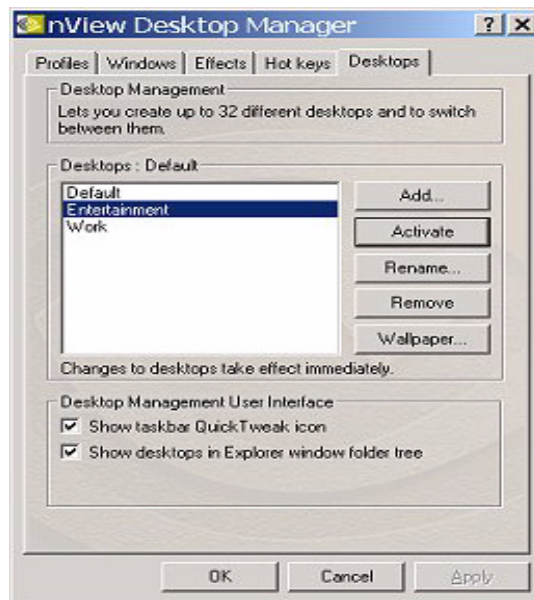
To access the Desktop Manager “Desktops” page (Figure 10.1), follow these steps:

- 1 Open the Desktop Manager control panel.

If you need help, see [“Accessing Desktop Manager And Its Settings” on page 31](#)

- 2 Click the **Desktops** tab.

**Figure 10.1** Desktop Manager: “Desktops” Page



## Notes Before You Begin

---


- Desktop options **Add**, **Activate**, **Rename**, **Remove**, and **Wallpaper** take immediate effect when clicked.
- Each desktop is identified by a name and can have optional customizations, such as independent backgrounds (Wallpaper option).
- Control panels, command prompt windows, and modal dialog boxes are visible on all desktops. All other applications, by default, launch *only* on the active desktop unless you have set up application Position Memory for the application.
- nView does not support different resolutions per desktop. All desktops are automatically set at the same resolution.
- The type of background (wallpaper) selected for your desktop can significantly affect how fast you can switch from one desktop to another. For further details, see the “Note” in “[Changing Background: Wallpaper](#)” on [page 97](#).

## Desktops List

---

The Desktops list box displays a list of all currently available desktops.


- Desktop Manager maintains a minimum of one desktop and a maximum of 32 desktops. By default, there is always one desktop named “default”, which is the desktop you startup on.
- The default desktop is listed first, followed by all other desktops in alphabetical order.

 *If you disable Desktop Manager, you are returned to the default desktop and all open windows are moved to the default desktop.*

## Creating Desktops

---

Multiple desktops can be created either from the Desktop Manager control panel or the Explorer shell extension. Each desktop can be assigned a customizable name.

 *You cannot add duplicate desktop names.*

## Creating Desktops with the “Add” Option

- 1 From the Desktops page (Figure 10.1), click **Add**. A dialog box prompts for a name of the new desktop.
- 2 After you enter the name, the desktop is created and appears in the list of desktops.


 *If enabled, you can use the Desktop Explorer node in the Windows Explorer to create and add desktops.*

*See “Creating Desktops from Desktop Explorer” on page 101.*

## Activating or Switching Desktops

---

- 1 From the “Desktops” page, click the desktop you want to activate.
- 2 Click the **Activate** option to move to the selected desktop. You can perform the same function by double-clicking a desktop from the list of desktops.

 *The type of background (wallpaper) selected for your desktop can significantly affect how fast you can switch from one desktop to another.*

*For further details, see the “Note” in “Changing Background: Wallpaper” on page 97.*

You can also use a variety of other methods to switch between desktops as discussed in these sections:

- “Activating Desktops from the NVIDIA QuickTweak Icon” on page 95
- “Activating Desktops From the Windows Desktop Properties Menu” on page 96
- “Activating Desktops from Desktop Explorer” on page 97
- “Activating Desktops With Hot Keys” on page 97

### Activating Desktops from the NVIDIA QuickTweak Icon

To activate desktops from the NVIDIA QuickTweak icon, follow these steps:

- 1 Click the **Show taskbar QuickTweak icon** option on the “Desktops” page and click **Apply**. This adds the NVIDIA QuickTweak icon to the Windows taskbar (Figure 10.2).

**Figure 10.2** NVIDIA QuickTweak Icon



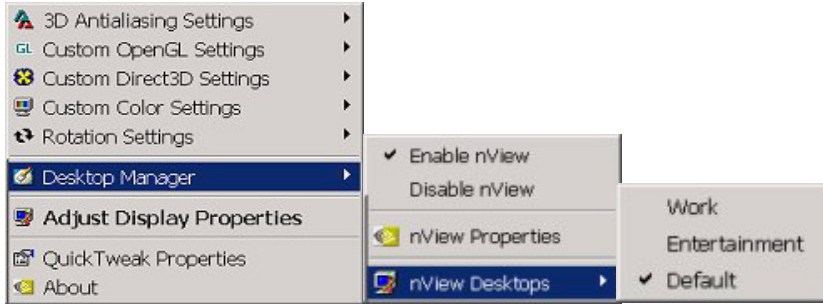


- 2 Right click the QuickTweak icon from the Windows taskbar, choose **Desktop Manager > nView Desktops** to display the list of your desktops. Figure 10.3 shows an example of a list of desktops.

*If Desktop Manager is disabled, you cannot access the nView Desktops option. In this case, right click the QuickTweak icon from the Windows taskbar, choose **Desktop Manager > Enable nView**. Again, right click the QuickTweak icon from the Windows taskbar, then choose **nView Desktops**.*

- 3 Choose the desktop you want to activate.

**Figure 10.3** Accessing Desktops Through the QuickTweak Icon

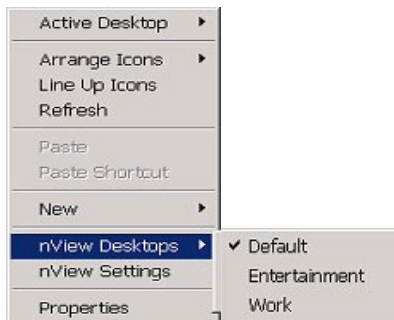


## Activating Desktops From the Windows Desktop Properties Menu

- 1 Confirm that Desktop Manager is enabled.
- 2 Right click from your Windows desktop to display the properties menu.
- 3 Choose **nView Desktops** to view a list of your desktops.

Figure 10.4 shows a sample list of desktops from the desktop properties menu.

**Figure 10.4** Accessing Desktops From the Properties Menu



- 4 Choose the desktop you want to activate.

### Activating Desktops from Desktop Explorer

See “Renaming, Deleting, and Activating Desktops from Desktop Explorer” on page 102.

### Activating Desktops With Hot Keys

See “Using Hot Keys” on page 86.

## Renaming Desktops

---

The **Rename** option lets you to rename the selected desktop from a text-input dialog box where you can type in a new name for the selected desktop.


You can perform the same function from the Desktop Explorer; see “Renaming, Deleting, and Activating Desktops from Desktop Explorer” on page 102.

## Removing Desktops

---

Click the **Remove** option to remove the selected desktop from the list.

Once you delete a desktop, it is removed from the list of desktops. The applications on the deleted desktop now move to the Default desktop.

 *You cannot remove the startup (or default) desktop.*

You can perform the same function from the Desktop Explorer; see “Renaming, Deleting, and Activating Desktops from Desktop Explorer” on page 102.

## Changing Background: Wallpaper

---

The **Wallpaper . . .** option lets you change the background of the selected desktop.

- 1 From the Desktops page, select the desktop for which you want to change the background.
- 2 Click **Wallpaper . . .**

Desktop Manager switches to the selected desktop and opens the Windows **Display Properties > Background** page, as shown in [Figure 10.5](#).

**Figure 10.5** Changing Background (Wallpaper) for a Desktop



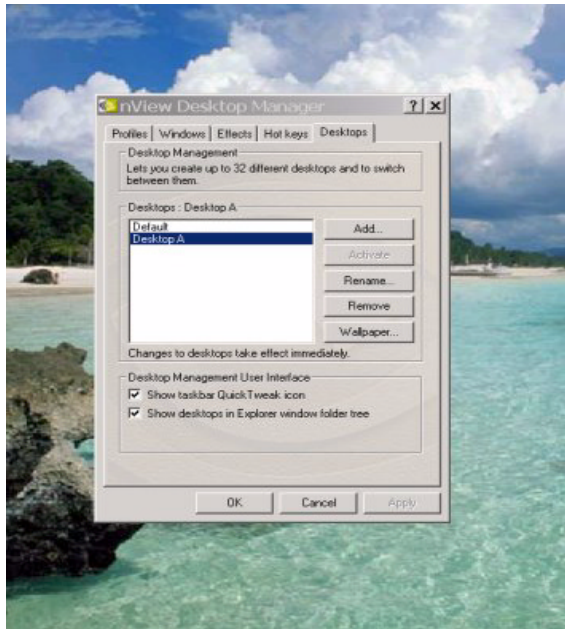
- 3 You can scroll through the list of backgrounds and select a background you want.

*♪ The type of background (wallpaper) you select for your desktop can significantly affect how quickly you can switch from one desktop to another. Desktop switching performance from fastest to slowest based on types of desktop backgrounds is listed below*

Type of Desktop Background	Fastest to Slowest Desktop Switching Speed
None	Fastest
Bitmap	Faster
Active desktop bitmap	Fast
Active desktop .JPEG file	Slower
Active desktop .HTML	Slowest

- 4 From the Picture Display drop-down list, click **Stretch**, **Tile**, or **Centered**, depending on how you want the background to be displayed.
- 5 Click **OK**.

Notice that the background change takes effect immediately and you are returned to the Desktops page, as shown in [Figure 10.6](#).

**Figure 10.6** “Desktops” Page *After* Changing Background (Wallpaper)

## User Interface Settings

---

### Show Taskbar QuickTweak Icon

The **Show taskbar QuickTweak icon** option adds the NVIDIA QuickTweak icon to the Windows taskbar (Figure 10.2).

- 1 Check (uncheck) this option to add (remove) the QuickTweak icon to (from) the Windows taskbar.
- 2 Click **Apply** for the setting to take effect.

You can use the QuickTweak icon to perform the following Desktop Manager functions:


- Enable and Disable the Desktop Manager.


See “Using the NVIDIA QuickTweak Icon to Enable/Disable Desktop Manager” on page 39.

- Access the Desktop Manager control panel.  
See “Accessing Desktop Manager Settings from the NVIDIA QuickTweak Icon” on page 42.
- Switch between desktops.  
See “Activating Desktops from the NVIDIA QuickTweak Icon” on page 95.

## Show Desktops in Explorer Window . .

The **Show desktops in Explorer window folder tree** option lets you view desktops in the Windows Explorer folder tree.

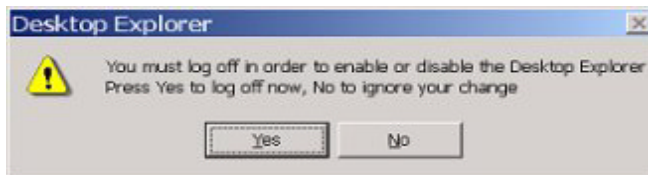
 *Only users with Administrator access privileges can enable or disable this option. This also implies that if a non-Administrator user attempts to load a profile with Desktop Explorer-enabled settings, these settings will not load.*

 *Microsoft Internet Explorer 6.0 or later version must be installed for the Desktop Explorer feature to work.*

- 1 Check (uncheck) this option to add (remove) the Desktop Explorer node to your Windows Explorer.
- 2 Click **Apply** for the setting to take effect.

A prompt appears asking you to log off for the change to take effect ([Figure 10.7](#)).

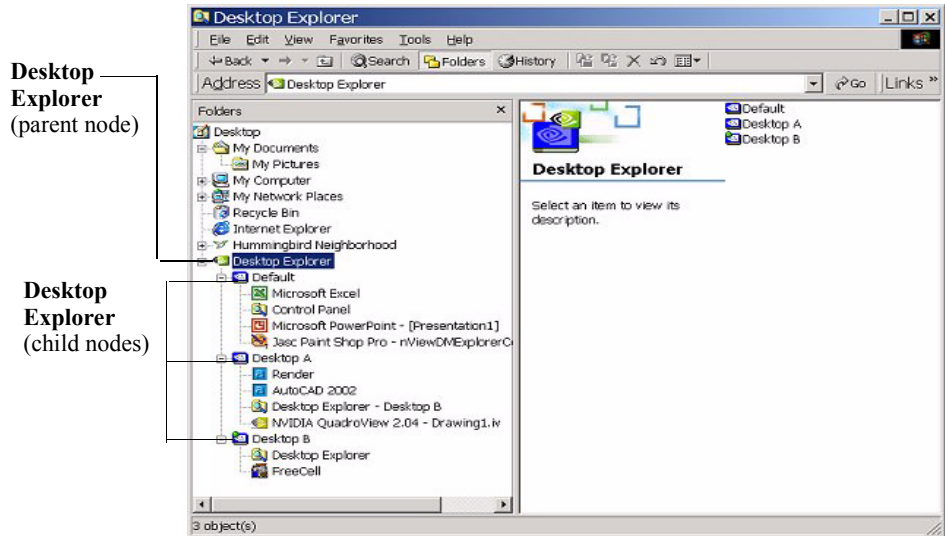
**Figure 10.7** Desktop Explorer Prompt



- 3 Click **Yes** to log off for the change to take effect, or **No** to ignore your change.

If you just enabled the Desktop Manager Explorer extension, once you log back in, it will be visible in your Windows Explorer window. A sample Desktop Explorer extension is shown in [Figure 10.8](#).

If you disabled the Desktop Manager Explorer extension, once you log back in, it will be removed from your Windows Explorer window

**Figure 10.8** Desktop Explorer Extension in Windows Explorer

## Using Desktop Explorer

A Windows Explorer extension provides a visual desktop browser. Enabling the “Show desktops in Explorer Window folder tree” option adds a new **Desktop Explorer** node in the Windows Explorer tree (Figure 10.8), with each defined desktop being represented as a child node (with its name and icon) of the Desktop Explorer parent node. When a desktop node is selected, the content pane displays all applications present on the selected desktop. The active applications are displayed as leaves of each corresponding desktop node, allowing drag and drop and other common Explorer functionality.

The following topics are discussed in this section:

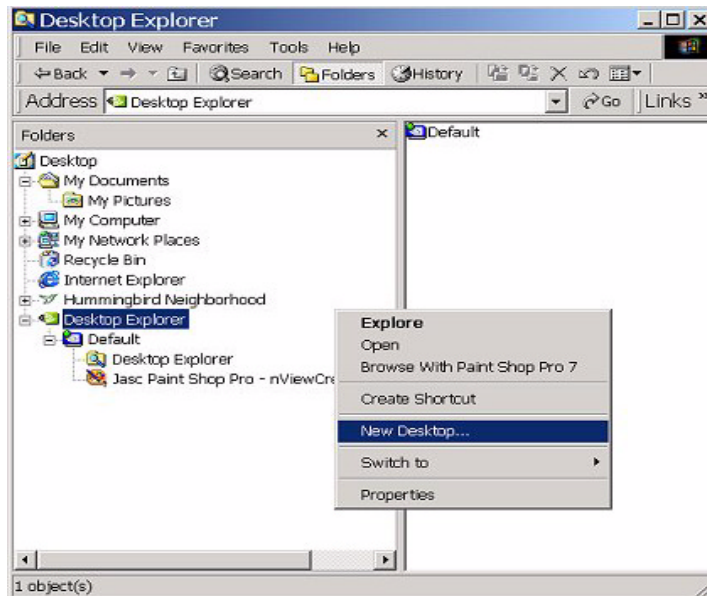
- “Creating Desktops from Desktop Explorer” on page 101
- “Renaming, Deleting, and Activating Desktops from Desktop Explorer” on page 102
- “Accessing the “Desktops” Settings from the Desktop Explorer” on page 103
- “Moving Applications Between Desktops or to a New Desktop in Desktop Explorer” on page 104
- “Accessing Other Application Settings from Desktop Explorer” on page 105

### Creating Desktops from Desktop Explorer

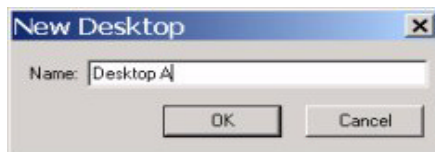
To create and add a desktop using the Desktop Explorer, follow these steps:

- 1 Right click Desktop Explorer in the Folders list, as shown in [Figure 10.9](#)
- 2 Click **New Desktop** to display a dialog box to enter the desktop name.
- 3 Type the new desktop name ([Figure 10.10](#)) and click **OK**. The new desktop appears as a new desktop under Desktop Explorer.

**Figure 10.9** Desktop Explorer: Main Properties Menu



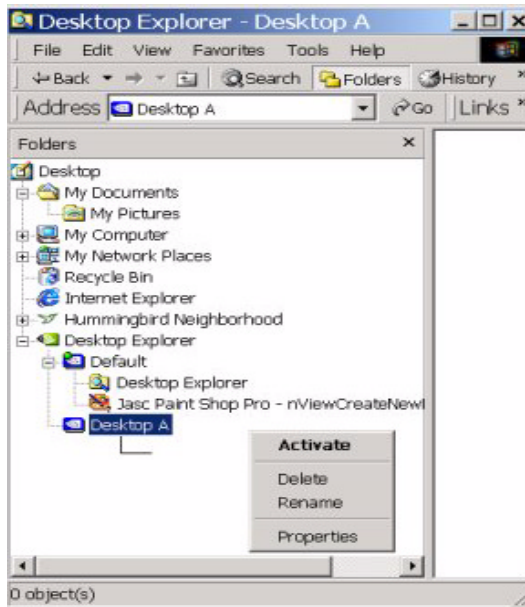
**Figure 10.10** Entering a Desktop Name



## Renaming, Deleting, and Activating Desktops from Desktop Explorer

Using the Desktop Explorer, you can also rename, delete, and activate (switch to) a selected desktop.

- 1 Right click the Desktop name in the Explorer window to display a pop-up properties menu, as shown in [Figure 10.11](#).

**Figure 10.11** Desktop Explorer: Desktop Properties Menu

**2** Click one of these actions:

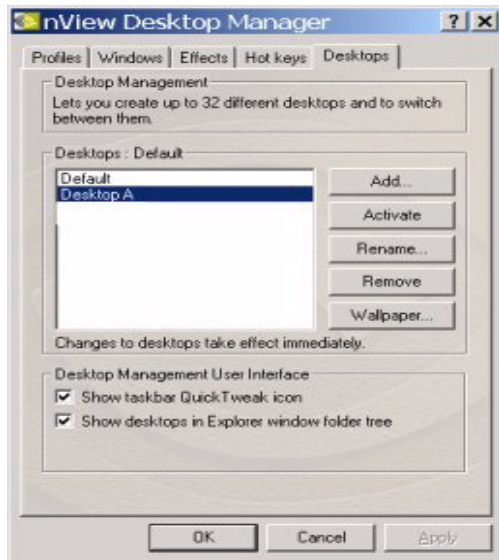
- **Activate:** This option immediately switches you over to the selected desktop.
- **Delete** lets you delete the selected desktop.
- **Rename** displays a “Rename Desktop” dialog box in which you can enter a desktop name. Click **OK** when you are done and the new name replaces the old one in the Explorer window.

## Accessing the “Desktops” Settings from the Desktop Explorer

Using the Desktop Explorer, you can also access the Desktop Manager “Desktops” page.

- 1** Right click the Desktop name in the Explorer window to display a pop-up properties menu, as shown in [Figure 10.11](#).
- 2** Click **Properties** to display the “Desktops” page ([Figure 10.12](#)).



**Figure 10.12** “Desktops” Page Displaying an Added Desktop

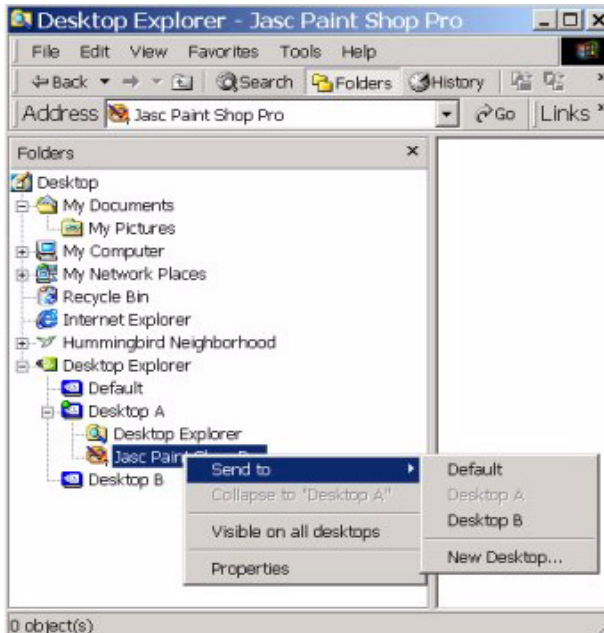
## Moving Applications Between Desktops or to a New Desktop in Desktop Explorer

**J** If you enabled “*Extend application system menus with nView option. .*” on the Windows page, you can also move applications between desktops using the application’s nView Extension menu option.

See “nView System Menu Extension Options” on page 70 for details.

You can use any of the following methods to move applications from one desktop to another:

- You can use your mouse and to drag and drop applications from one desktop to another.
- You can highlight an application listed in a desktop and right click to display a properties menu, as shown in [Figure 10.13](#). Then follow these steps:
  - a Click **Send to** followed by an existing desktop to which you want to move the application. The application will then appear under the desktop you selected.
  - b If you want to create a new desktop on which you want to place the application, click **New Desktop**, enter the name of the new desktop in the dialog box that appears, and click **OK**. The application will appear under the new desktop.

**Figure 10.13** Desktop Explorer: “Send to Desktop n” Application Settings

## Accessing Other Application Settings from Desktop Explorer

Using the Desktop Explorer, you can access a few application-specific settings as explained below.

**J** *If you enabled “**Extend application system menus with nView option. .**” on the Windows page, you can also move applications between desktops using the application’s nView Extension menu option.*

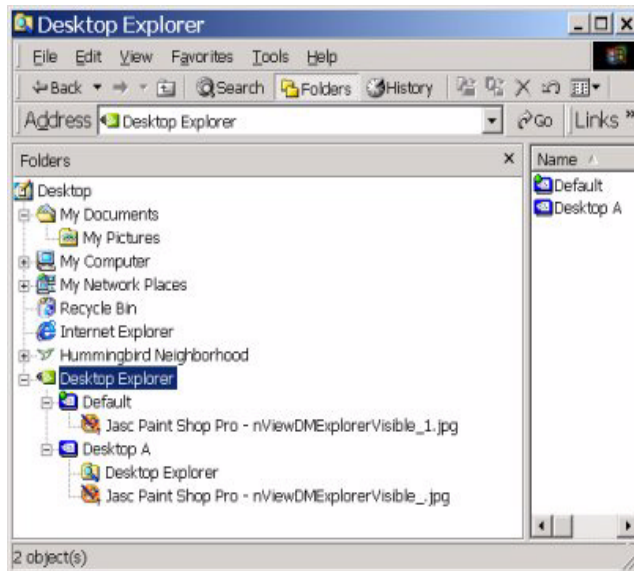
*See “nView System Menu Extension Options” on page 70 for details.*

- **Visible on all desktops:** To access this option, right click an application in a desktop to display a properties menu, as shown in [Figure 10.13](#). Then click **Visible on all desktops** to check the option and enable it. Notice that the application now appears under each of your desktops, as shown in [Figure 10.14](#).
- **Collapse to <current desktop>:** Once you enable the Visible on all desktops option for an application, you can undo the process by limiting the availability of the application to only one desktops. To do so, follow these steps:
  - a Right click the instance of the application that appears in the desktop in which you want the application to remain.

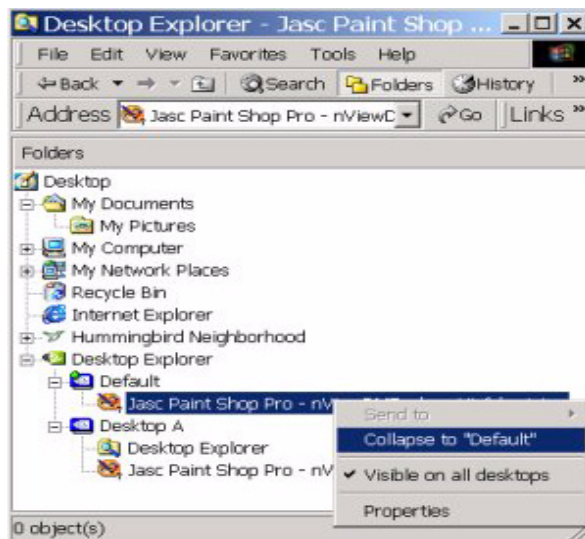
- b From the properties menu that appears, click **Collapse to <current desktop name>**, as shown in Figure 10.15.

Notice that the application is removed from all desktops except the one under which you wanted the application to remain. See the example in Figure 10.16.

**Figure 10.14** Desktop Explorer: *After* Setting “Visible on all desktops”



**Figure 10.15** Desktop Explorer: “Collapse to *Desktop n*” Application Setting



**Figure 10.16** Desktop Explorer: *After Setting “Collapse to Desktop n”*