

acer

Just for starters...

English

A. Hardware connection:

1. Turn on the projector.



2. Attach the Acer WPG. Use the DVI-to-VGA converter if needed. Plug one end of the audio cable into your projector's audio-in jack, and the other end into the Acer WPG's audio jack.



Acer WP100

Quick Guide

3. Check the power LED on the left side of the WPG.

If the LED is off, please plug one end of the DC-to-DC cable into the power jack and the other into the projector's 5V DC-out jack (if fitted), or use the 5V power adapter to supply power. Once the power is connected, the power LED should turn red.



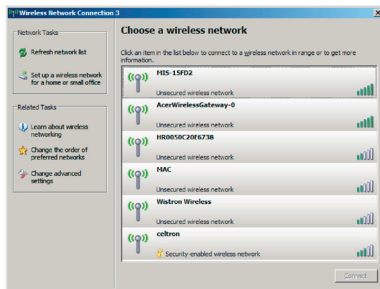
4. After a short time, the WPG's default screen will be projected, showing brief software installation instructions.

B. Software Installation:

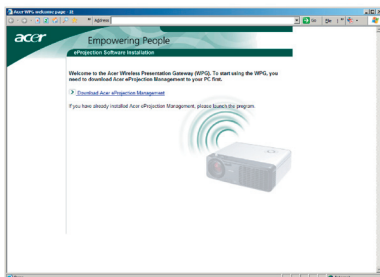
The software is stored on the WPG. Please follow the steps below to download and install the software.

! To download the software, you must remove LAN cable from your PC and ensure that your browser is set to open up a website.

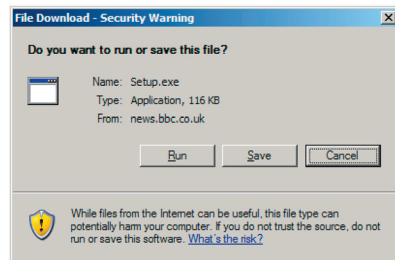
1. Switch on your notebook, and activate the wireless LAN.
2. Scan for available WLAN APs using your preferred WLAN manager.
3. Select the AP labeled "AcerWirelessGateway-" from the list of available APs. Connect to this AP.



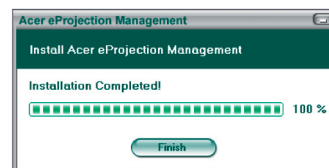
4. If you receive any security warnings, select "Connect Anyway".
5. Once the connection is established, open your Internet browser. If the default Internet browser is set to a blank screen, just enter the URL for any website. You will automatically be taken to the Acer WPG welcome page, where you will be able to download the driver.



6. Click on the link to download and install the driver. If you receive any security warnings, click "OK" to proceed with the installation procedure. During the driver installation, your screen may flicker.



7. Once the installation is complete, the Acer WPG software will open.



8. Once you're connected, the PC screen will be projected and the WPG's power LED will turn green.