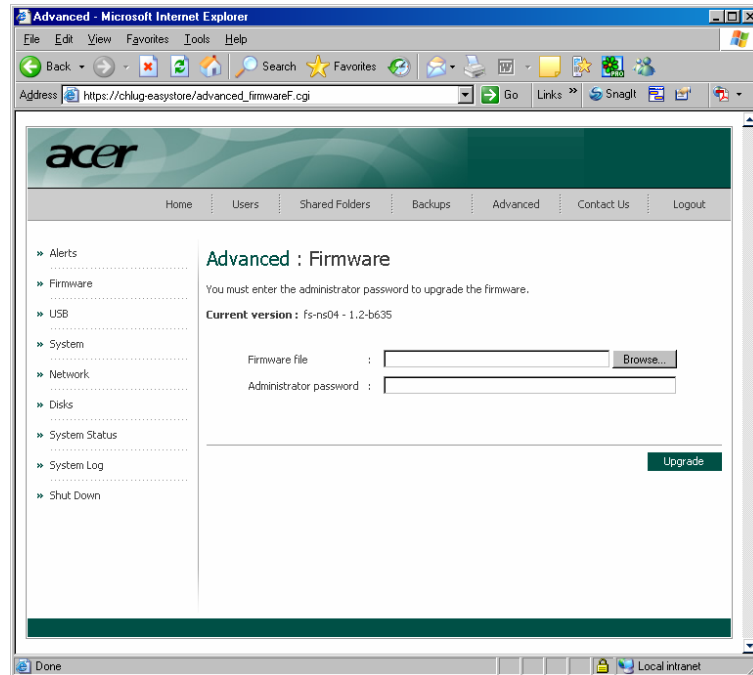


Index

Firmware update/check	2
Re-initialization of the easyStore	3
Checking Active Directory server	5
AD authentication mode	6

Firmware update/check

It is very important to check the firmware of the easyStore before starting with the Active Directory synchronization. Please log into the web-gui and check it in the Advanced, System section:



Please remember to re-initialize the storage box if you are upgrading from b3xx to b6xx (v1.2) or b6xx (v1.2) to 8xx (v1.4).

If you are upgrading the system from b626 to b636 it is not necessary to re-initialize completely the storage box.

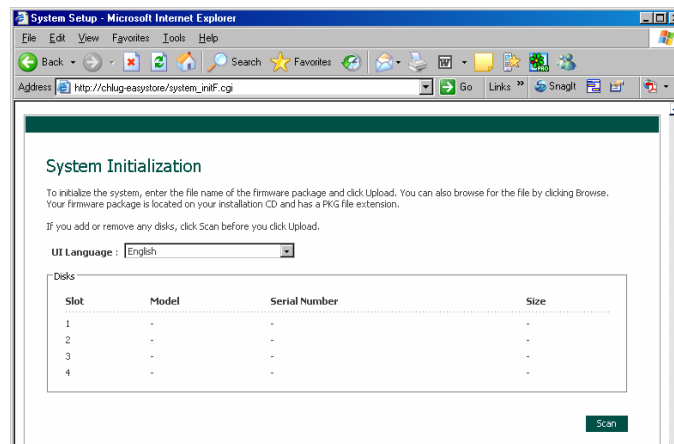
The normal upgrade won't erase any data or configuration saved in the easyStore. The initialization instead will completely erase all the data saved on the storage box.

Please always do a full backup before starting the re-initialization process.

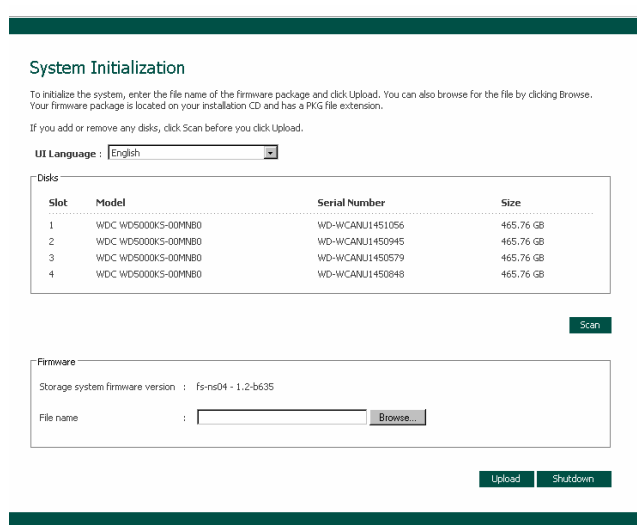
Re-initialization of the easyStore

In case it is necessary to re-initialize the system please follow these steps:

- 1) Power down the system by using the shutdown command in the web-gui, in the Advanced, shutdown section or by pressing the frontal button until the info led starts blinking.
- 2) Pull out all the hard disk driver from the easystore
- 3) Power on the system again and run the Storage System Console that is available on the Cd-Rom, to find out the IP Address of the easyStore. Press Log-in button and you will see a screen like this:



- 4) Enter the following URL in the browser: http://easystore_ip/system_init_vendorF.cgi
- 5) Upload the new firmware and wait until the process is done
- 6) Once the system reboot insert all the HDDs, one by one, starting from the top disk and waiting for the green led on the disk before inserting the second one.
- 7) Once it is done, press Scan button and all the disks will be shown in the page.



- 8) Select the new firmware and then press Upload. The upgrade process will start and it will take some minutes. After the upload has been done, the easyStore will reboot and start upgrading the f/w.

- 9) In few minutes the easyStore will boot properly and will ask you to select the RAID level. Acer recommends to use the RAID 5 with four HDDs.

Advanced : Disk Configuration

Your storage system can have up to four disks. Four disks have been detected. What kind of disk configuration would you like to use?

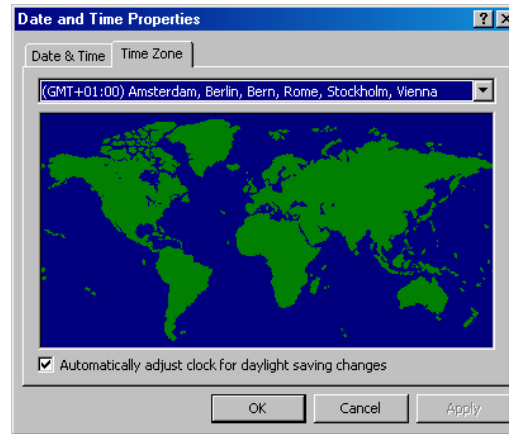
- ☒ **Data protection (RAID 5 - three disks minimum)**
An amount of disk space equal to one disk is used for data protection, and the rest is used for data storage. The data is distributed in such a way that it can be recovered if any one disk fails.
- ☐ **Data protection, failover (RAID 5+spare - four disks minimum)**
Three of the disks provide RAID 5 data protection, and the fourth automatically joins the RAID if one of the other three disks fails.
- ☐ **Data duplication (RAID 10 - four disks minimum)**
Half of the disk space is used for data storage, and the other half is used for a duplicate (mirror) of that data. If one disk fails, you have a backup copy.
- ☐ **Better performance, no data protection (RAID 0 - two disks minimum)**
All the disk space is used for data storage.
- ☐ **Expandable, no data protection (Linear - one disk minimum)**
All the disk space is used for data storage, and you can add more disks later without affecting your existing data.

Scan Next

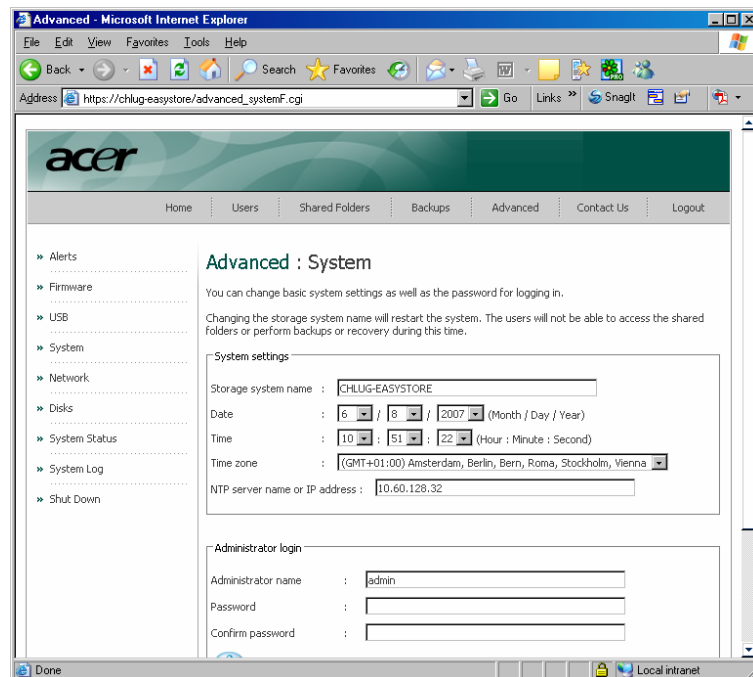
- 10) Press Next button and the easyStore will start build the new RAID level. It will take some hours depending on the RAID level selected. Sometimes this process can block all the normal process of the easyStore and it is not possible to create any new directory/users. Please wait until the building process is completed. To check this, just look at the Advanced, Disks section in the web-gui.

Checking Active Directory server

The first step to do is to check the Timezone set on the Active Directory server you are going to use in your environment. Please check it and then set it in the easyStore.



To set the correct timezone on the easystore, just log into the web-gui as admin and go to the Advance menu and then select "System" link from the left menu.



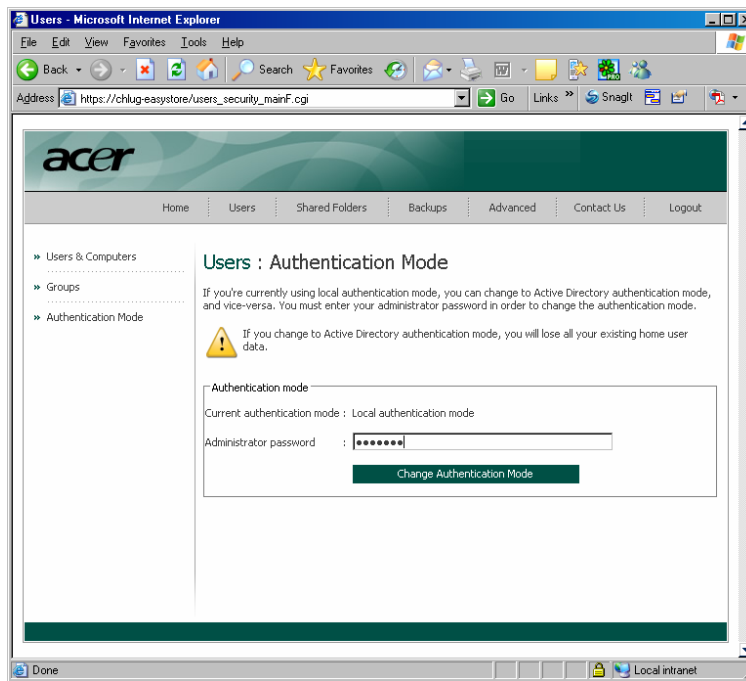
Please select the proper Timezone, the same used in the AD server and then enter the NTP server IP. This IP address is usually the same IP address of the Active Directory server if you are using Windows 2000/2003.

It is very important to enter the correct Ip address, otherwise the easyStore will have a different date and time, creating problems during the sync with the active directory.

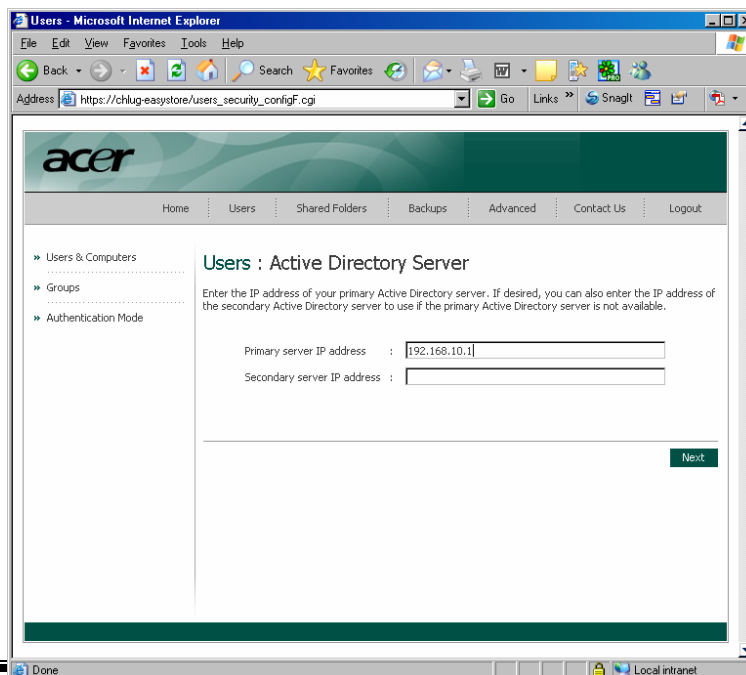
AD authentication mode

To make the easyStore join the Active Directory environment it is necessary to follow these steps:

- 1) Go to Users/Groups section in the web-gui and select Authentication mode on the left



- 2) Enter the admin password (default is "storage") and press Change Authentication Mode button
- 3) Enter the IP Address of the main Active Directory server and as a backup, the second one. It is important to enter the IP address and not the server name.



- 4) Enter then the Domain Administrator username and password. Write the Organization Unit path if you want just to sync one AD organization unit. The easyStore can manage no more than 256 users. Leave the OU section empty if you don't want to select any specific OU.
- 5) The system will ask again the Domain Administrator username and password. Check it and press next
- 6) The storage box will start synching to the AD server. After some minutes all the users and groups of the Active Directory will be available on the Users/Groups section of the web-gui.